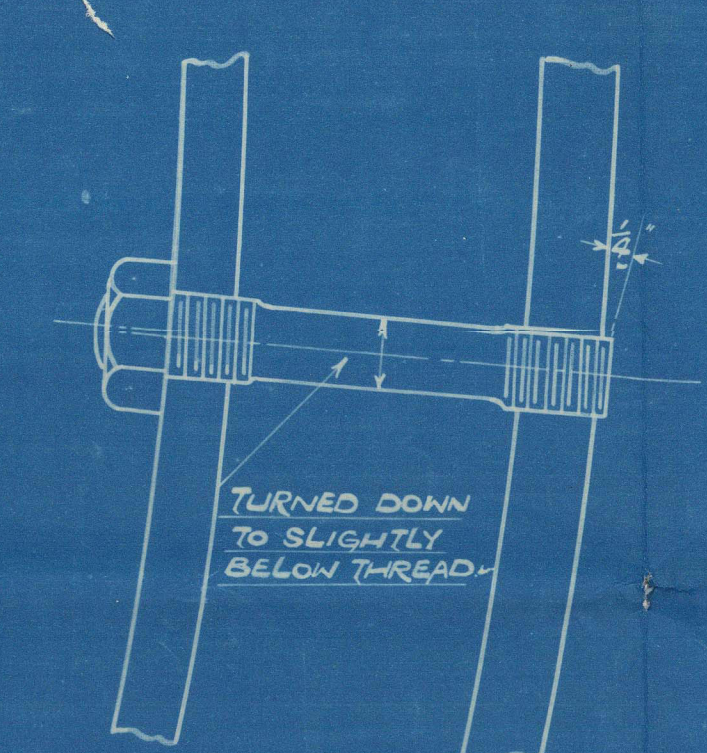
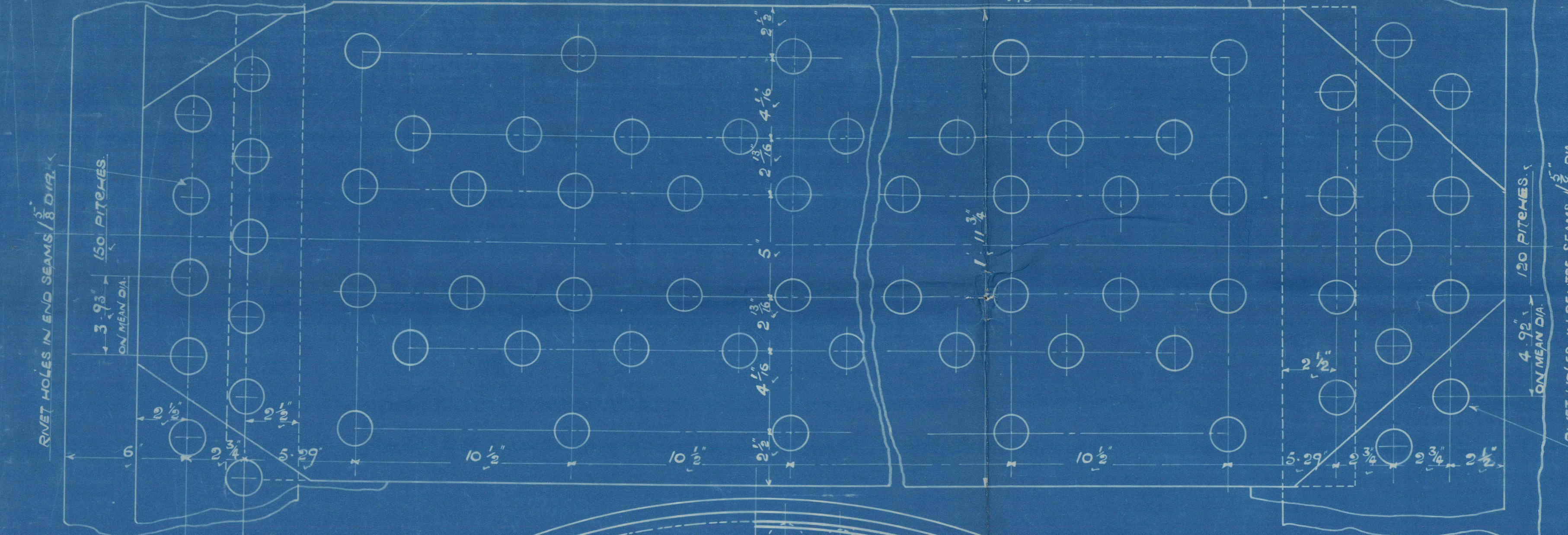
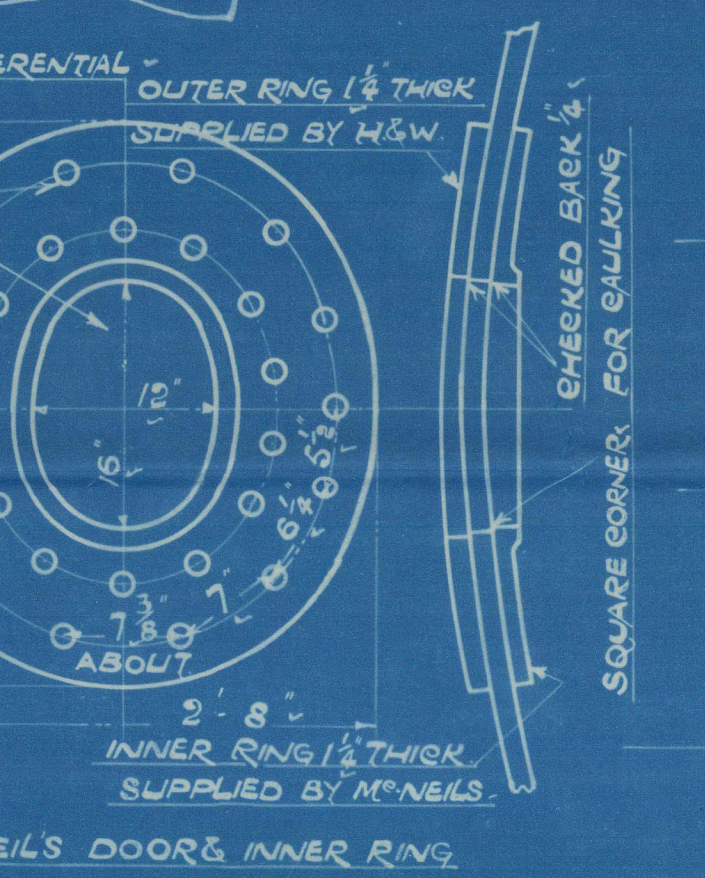
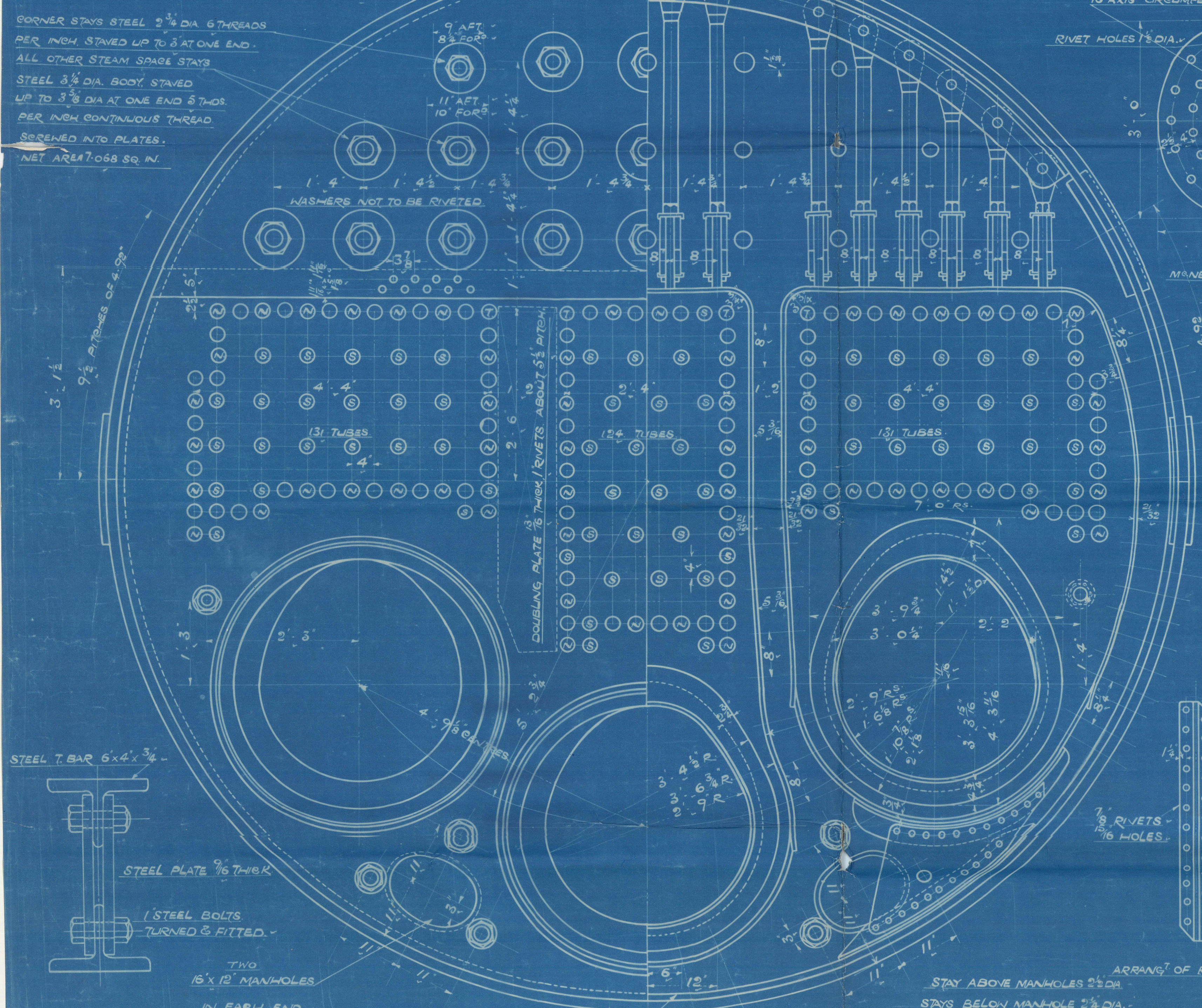
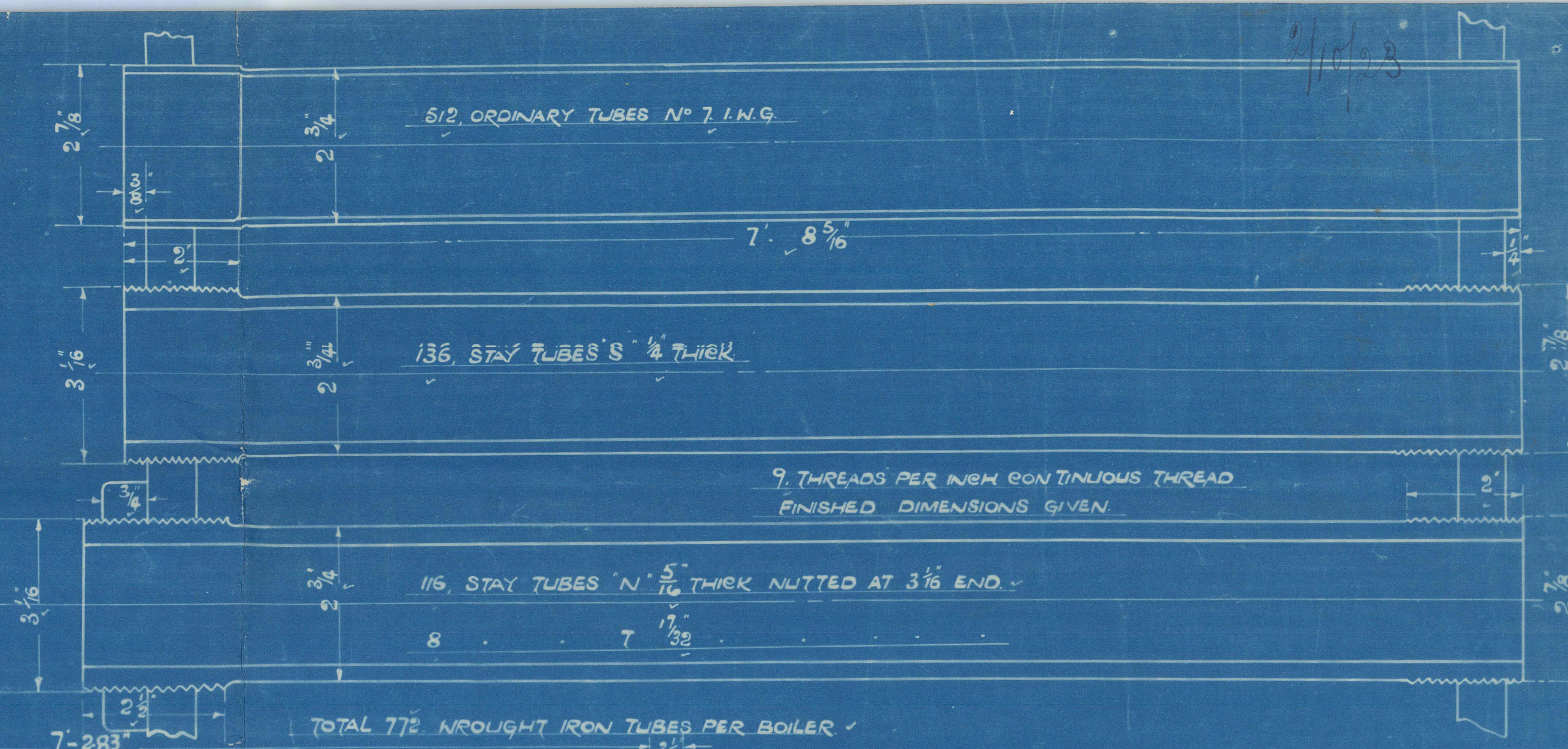


DR N° 1467A

SHELL PLATE 1/2" THICK - RIVET HOLES 1 1/2" DIA LONG 7/8" SEAM - OUTER BUTT STRAPS 1/2" THICK - INNER



HEATING SURFACE ETC.	1 BOILER	9 BOILERS
TUBES	4168 \$	37112 \$
FURNACES	354 \$	3186 \$
COMB CHAMBERS	314 \$	2826 \$
FRONT TUBE PLATES	64 \$	576 \$
TOTAL	4900 \$	44100 \$
GRATE AREA (5 1/2" BARS)	126.5 \$	1138.5 \$
STEAM SPACE	810 \$	7290 \$



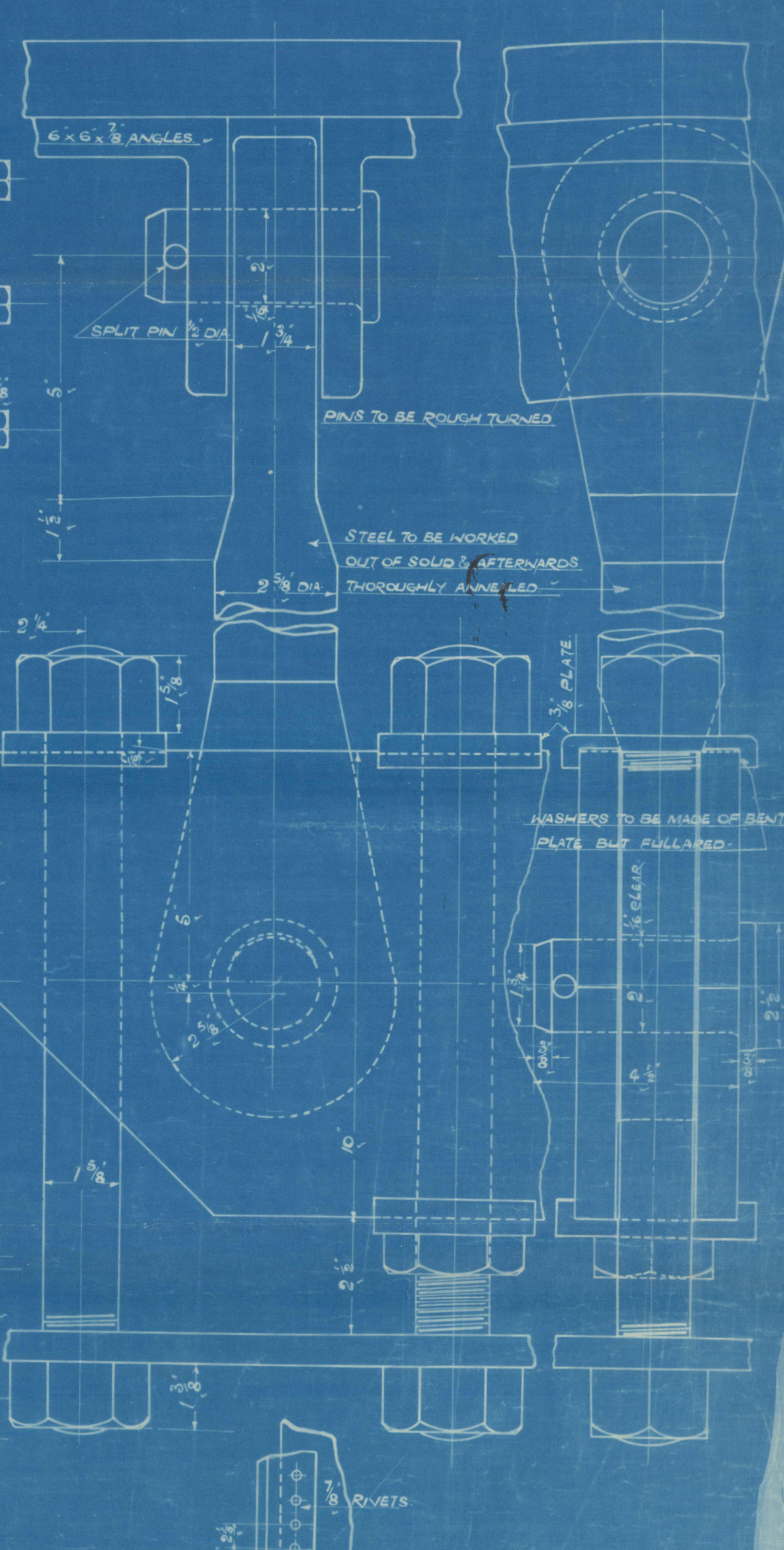
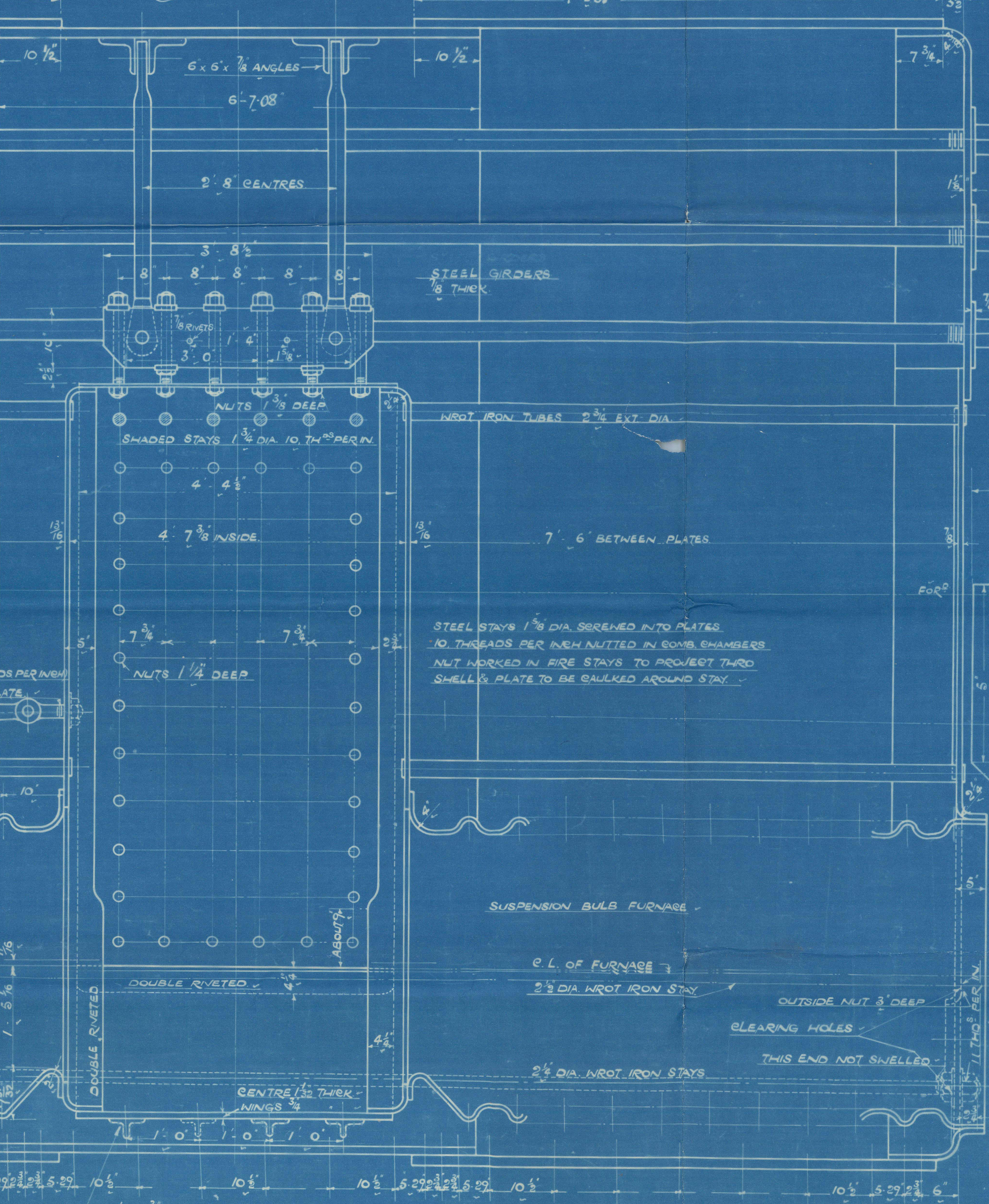
STAYS THIRD SHELL TO BE SORREND INTO BOTH PLATES & GALKED ON THE OUTSIDE -

7-283

1/2" DIA RIVET HOLES - ABOUT 56 RIVETS - IN EACH BAR -

NUTS FOR STEAM SPACE STAYS TO BE OF THE SAME DEPTH AS THE DIA OF BODY OF STAY -

STAYS TO BE HYDRAULICALLY STAYED AT ONE END & AFTERWARDS THOROUGHLY ANNEALED -



PARTICULARS OF RIVETING

LONGITUDINAL SEAMS DOUBLE BUTT STRAPS, RIVETED AS SHOWN -
STRENGTH OF PLATE BASE: STRENGTH OF RIVETS 96%
CIRCUMFERENTIAL SEAMS DOUBLE RIVETED AT ENDS AS SHOWN -
TREBLE CENTRE
END PLATES LAPPED DOUBLE RIVETED 1 1/2" RIVETS 3 1/2" PITCH -
FURNACES & COMB CHAMBERS DOUBLE RIVETED 7/8" RIVETS 3" PITCH SINGLE RIVETED 7/8" RIVETS 2 1/2" PITCH -
ALL PLATES & RIVETS STEEL, ALL HOLES DRILLED IN PLACE -
MINIMUM TENSILE STRENGTH OF SHELL PLATES 30 TONS PER SQ. INCH -
MINIMUM BUTT STRAPS 28 TONS -
MAXIMUM 32 TONS -
MINIMUM ENDS & COMB CHAMBERS 26 TONS -
MAXIMUM 30 TONS -
TENSILE OF STEAM SPACE STAY BARS FROM 28 TONS TO 32 TONS -
COMB CHAMBERS STAY BARS 26 30 TONS -
RIVET BARS 26 30 TONS -

NOTES RE-BOILER MATERIAL

LARGE NUMBERS FOR STEAM SPACE STAYS ARE TO BE BUT OUT OF BOTTOM FRONT PLATES WHERE FURNACE HOLES ARE BORED -

ALL RIVETS HAVE GUNN'S GRADE

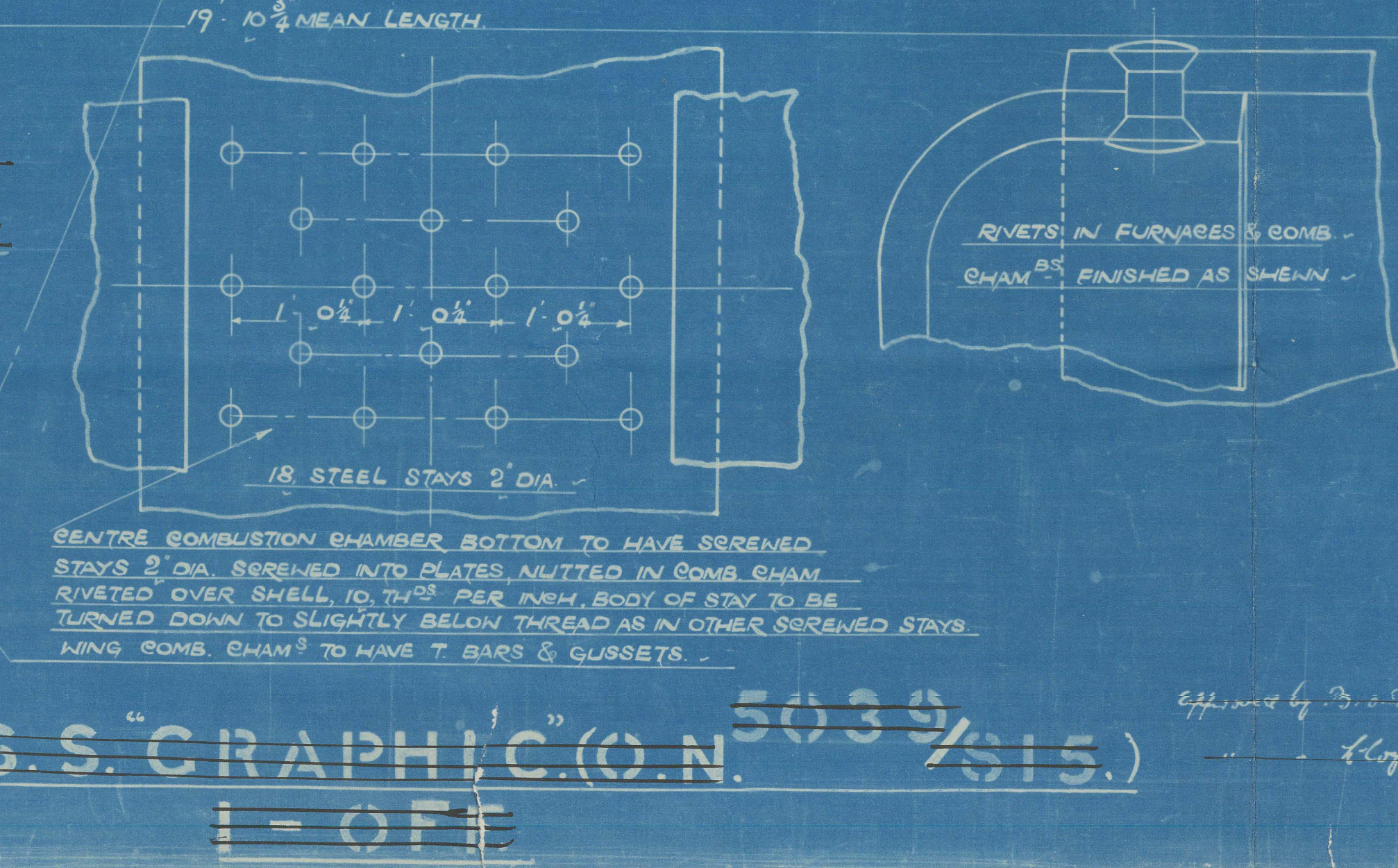
2" DIAMETER RIVETS TO BE ORDERED BY JOHN BROWN & CO. LONDON

A	B	C	D	E	F	G	H	I	J	K	L	M	N	O	P	Q	R	S	T
2 1/2	1 1/2	1 1/4	1 1/8	1 1/2	1 1/4	1 1/8	1 1/2	1 1/4	1 1/8	1 1/2	1 1/4	1 1/8	1 1/2	1 1/4	1 1/8	1 1/2	1 1/4	1 1/8	1 1/2
2 1/2	1 1/2	1 1/4	1 1/8	1 1/2	1 1/4	1 1/8	1 1/2	1 1/4	1 1/8	1 1/2	1 1/4	1 1/8	1 1/2	1 1/4	1 1/8	1 1/2	1 1/4	1 1/8	1 1/2

S.S. "HEROIC" I-OFF

WORKING PRESSURE 220 LBS PER SQ. INCH

TEST 385



NO 507

D. E. MAIN BOILER

UNDER SURVEY OF BOARD OF TRADE

SCALE 1" = ONE FOOT

11.8.13

11/10/23

11.8.13



T. S. S. HEROIC

DOUBLE ENDED BOILER

L. OFF.

HARLAND & WOLFF.

RETAIN



W1627-0103

© 2021

Lloyd's Register  
Foundation