

No 608.
Longitudinal Plan.

S. S. "Snowflake"

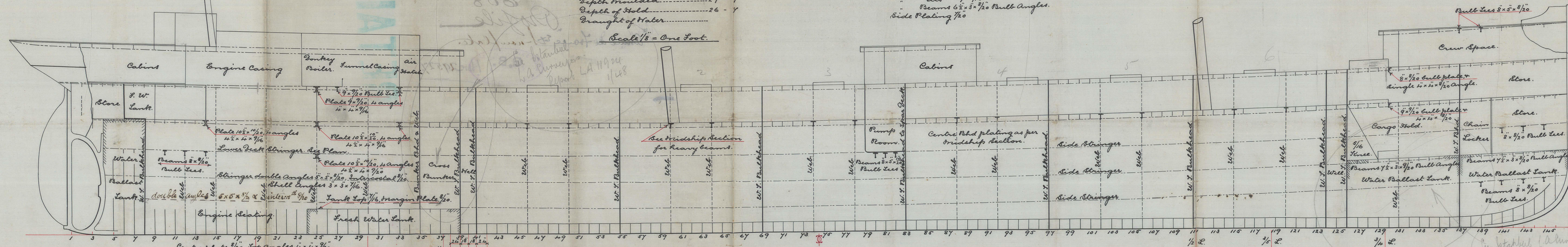
Principal Dimensions.

	Feet. Inches
Length overall.....	305 - 0
Length between Peps.....	294 - 0
Breadth Extreme.....	39 - 6
Depth shouldered.....	27 - 9
Depth of Hold.....	26 - 4
Brought of Water.....	

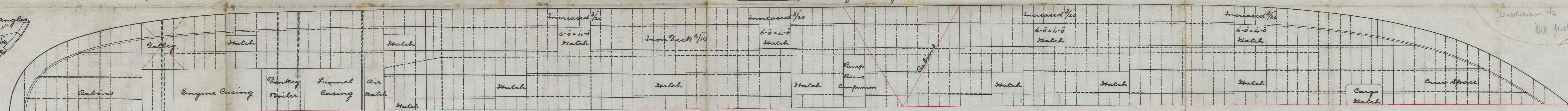
Scale $\frac{1}{8}'' = \text{One Foot.}$

Bridge Stringer $18 \times 9 \frac{1}{2}$
 " Lbs $9 \times 9 \frac{1}{2}$
 " Beams $6 \frac{1}{2} \times 3 \times 8 \frac{1}{2}$ Bulb Angles.
 Side Plating $\frac{1}{2}$ "

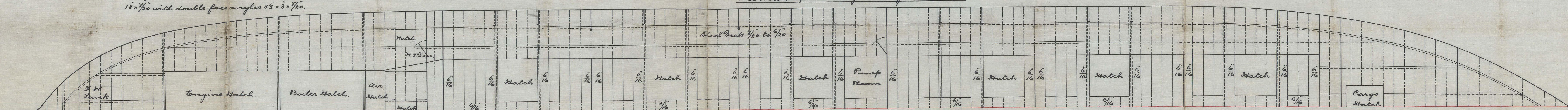
Forecastle Stringer $20 \times \frac{9}{16}$
 " Lies $11 \times \frac{9}{16}$
 " Beam $12 \times 3 \frac{9}{16}$ Built Angles. ~~in 2~~
 Side plating $\frac{7}{16}$



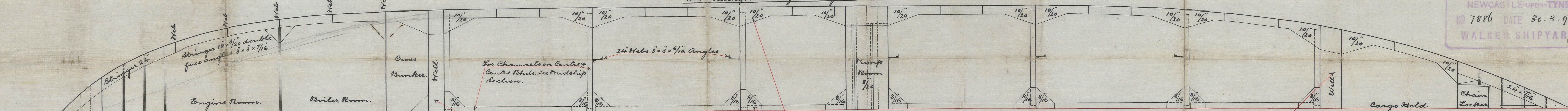
See Bridship Section for Stringers & Beams.



See Midship Section for Stringers & Beams



See Midships Section for Stringers & Webs.



Well Stiffening same as approved
for H^o 611. Ship.

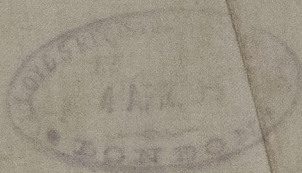
Note:- All Brackets as per Detail
Plans approved by Lloyds

Well Stiffening same
as approved for 82-611 Ship

SIR W. B. ARMSTRONG, MITCHELL & CO LIMITED.
NEWCASTLE-UPON-TYNE
NO 7886 DATE 30.3.93
WALKER SHIPYARD

J. W.
4/4/93

800 958



Longitudinal Plan

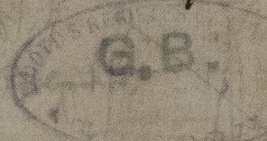
Length overall
Length between
Breadth beam
Depth hold
Breadth of hold
Breadth of water

Sir W. G. Armstrong
Mitchell & Co's

608

Profile

Amice de France et son flake.



H.W. 29527

214

Boiler
Bunker
Casing
Pipes

Plate 10' x 10' x 1/2"
Plate 8' x 8' x 1/2"
Plate 6' x 6' x 1/2"

Plate 10' x 10' x 1/2"
Plate 8' x 8' x 1/2"
Plate 6' x 6' x 1/2"

Plate 10' x 10' x 1/2"
Plate 8' x 8' x 1/2"
Plate 6' x 6' x 1/2"

Plate 10' x 10' x 1/2"
Plate 8' x 8' x 1/2"
Plate 6' x 6' x 1/2"

Plate 10' x 10' x 1/2"
Plate 8' x 8' x 1/2"
Plate 6' x 6' x 1/2"

Plate 10' x 10' x 1/2"
Plate 8' x 8' x 1/2"
Plate 6' x 6' x 1/2"



© 2021
Lloyd's Register
Foundation