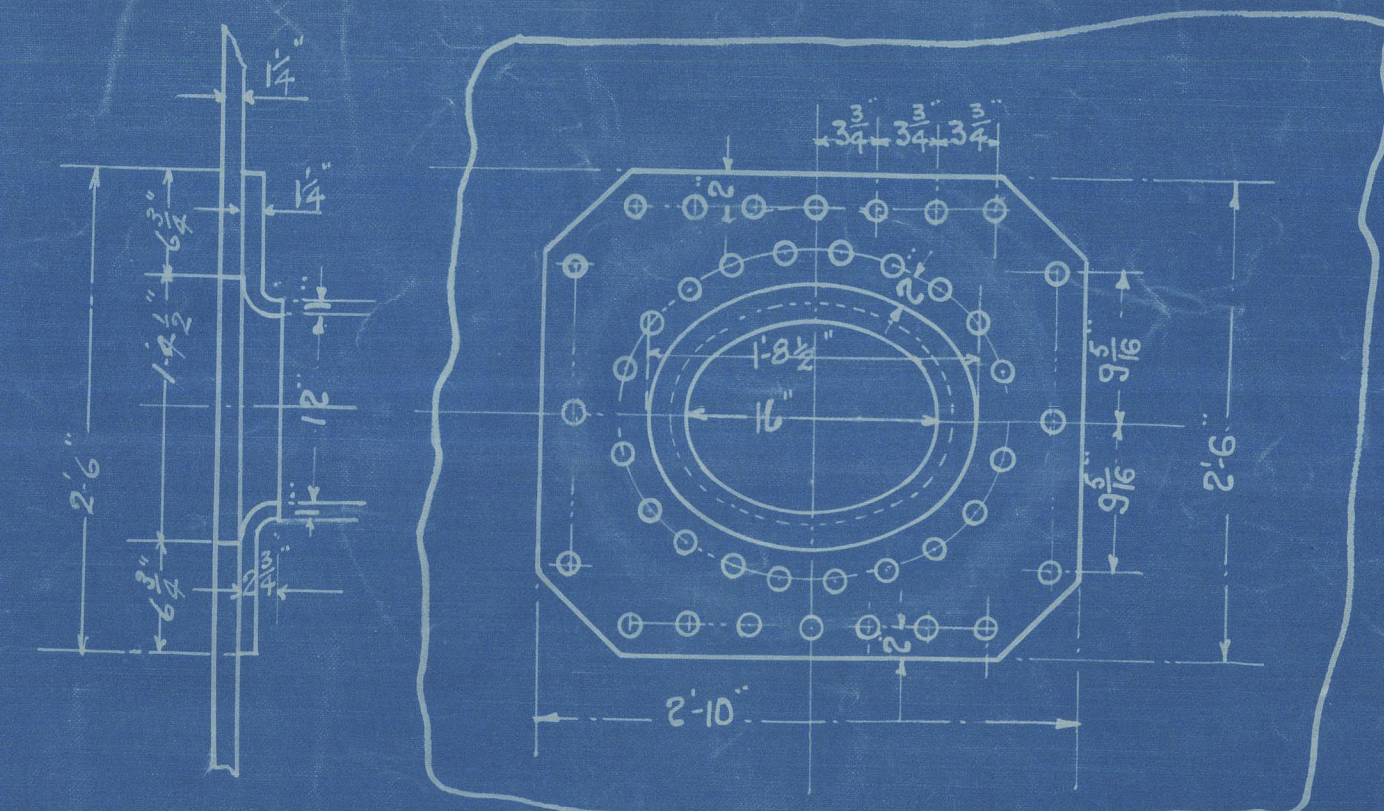
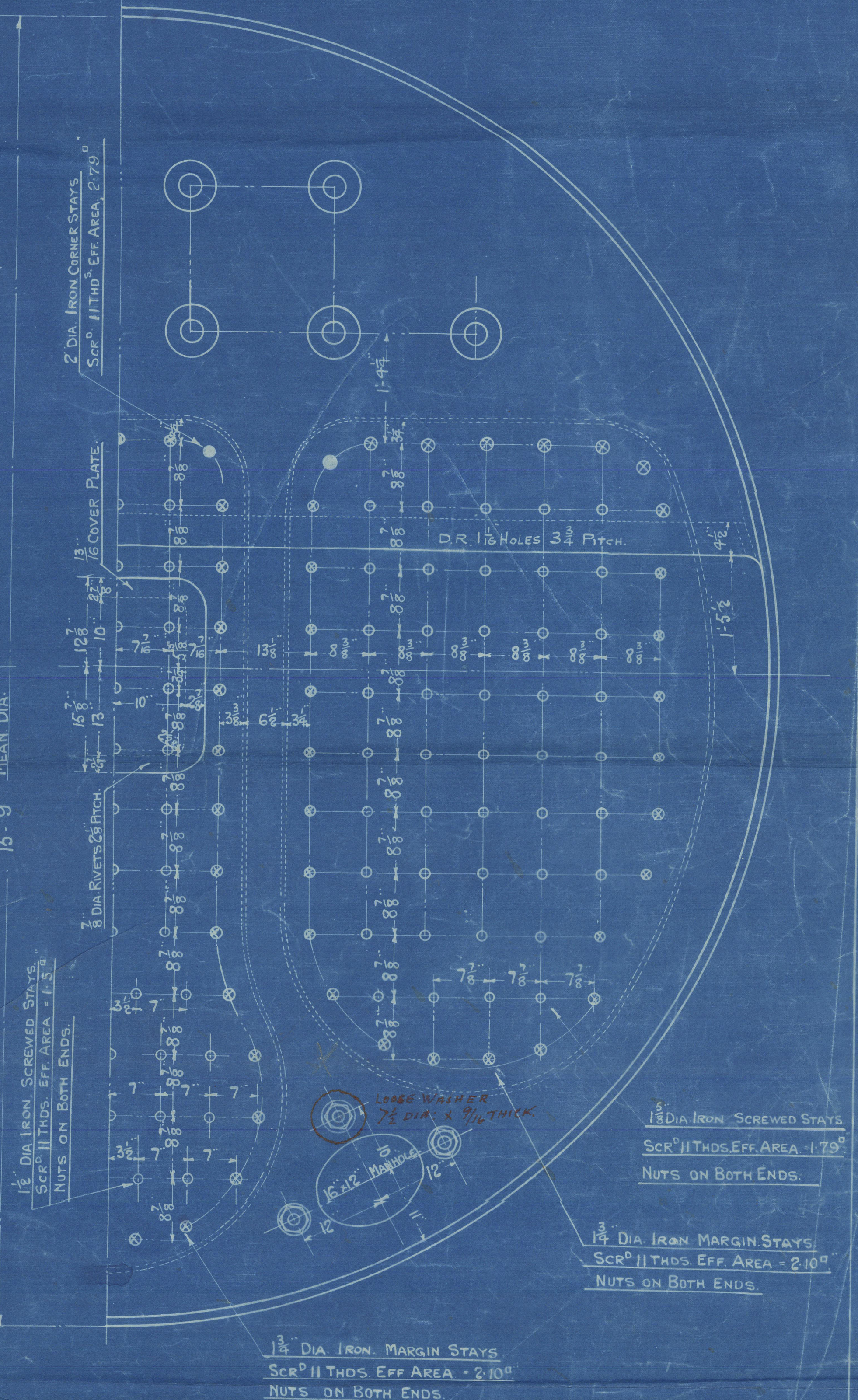
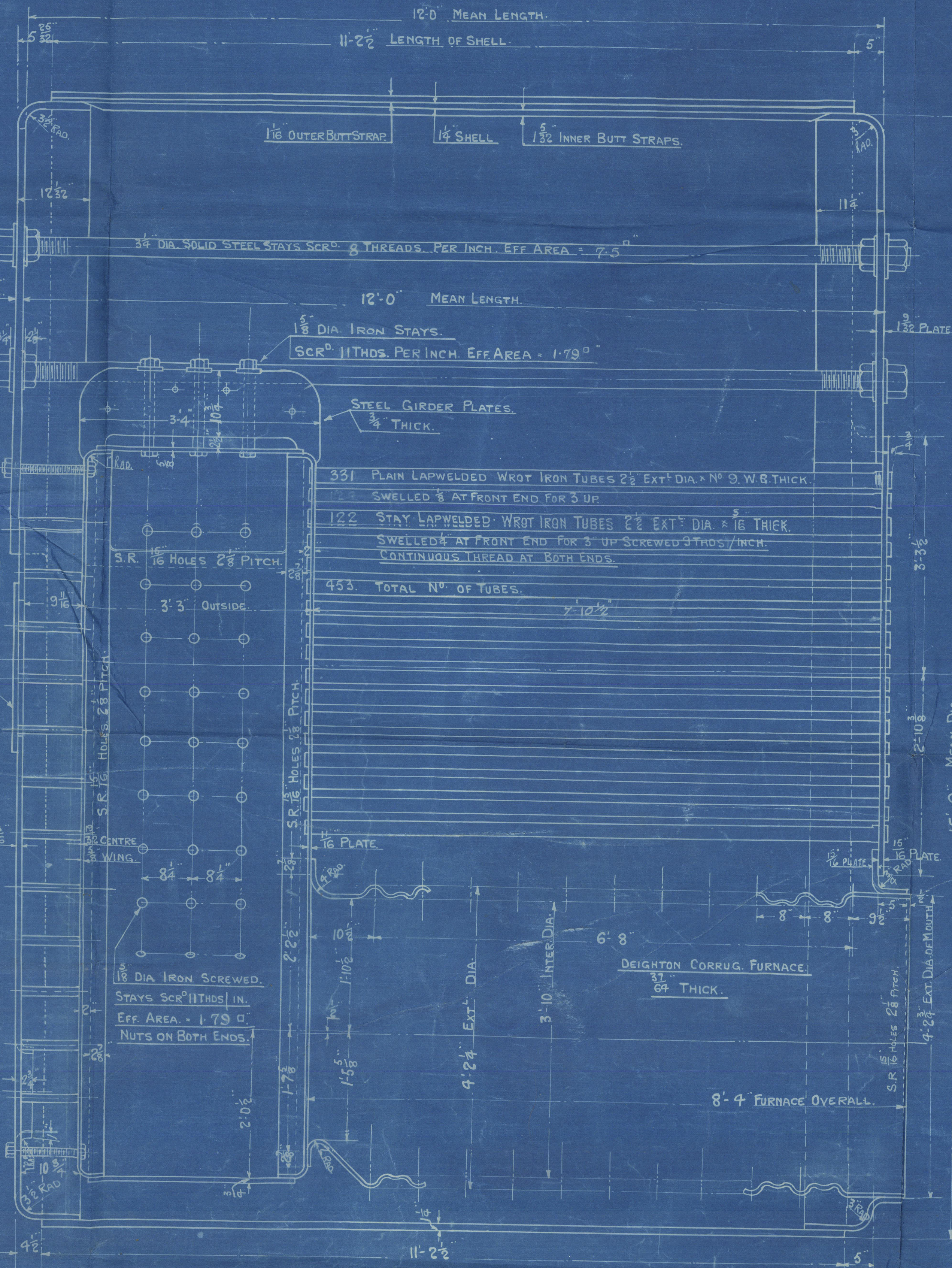
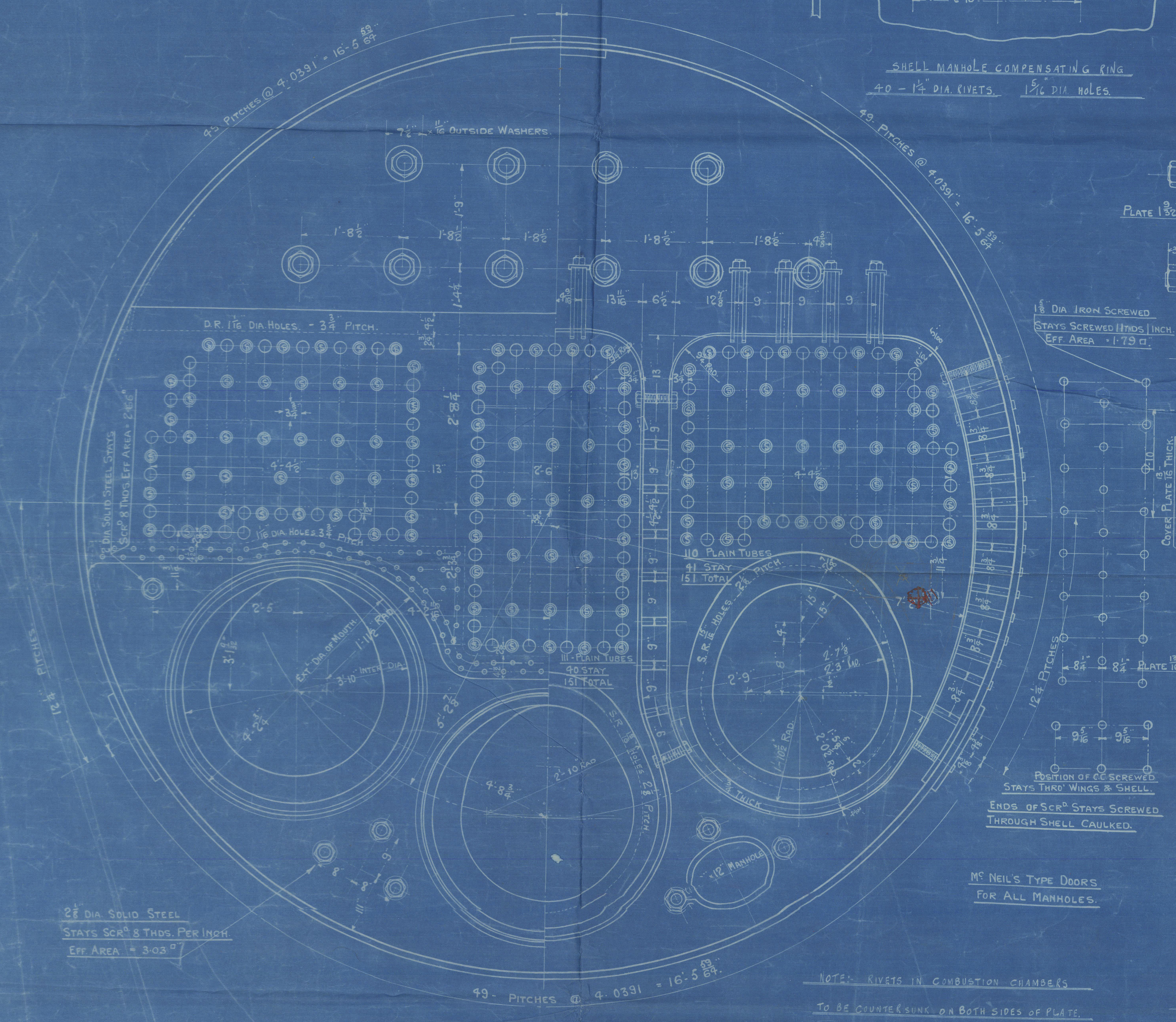


JOHN G. KINCAID & CO.
LIMITED
ENGINEERS.
GREENOCK.



SHELL MANHOLE COMPENSATING RING
4-0 - 1 1/2" DIA. RIVETS. 1 1/4" DIA. HOLES.

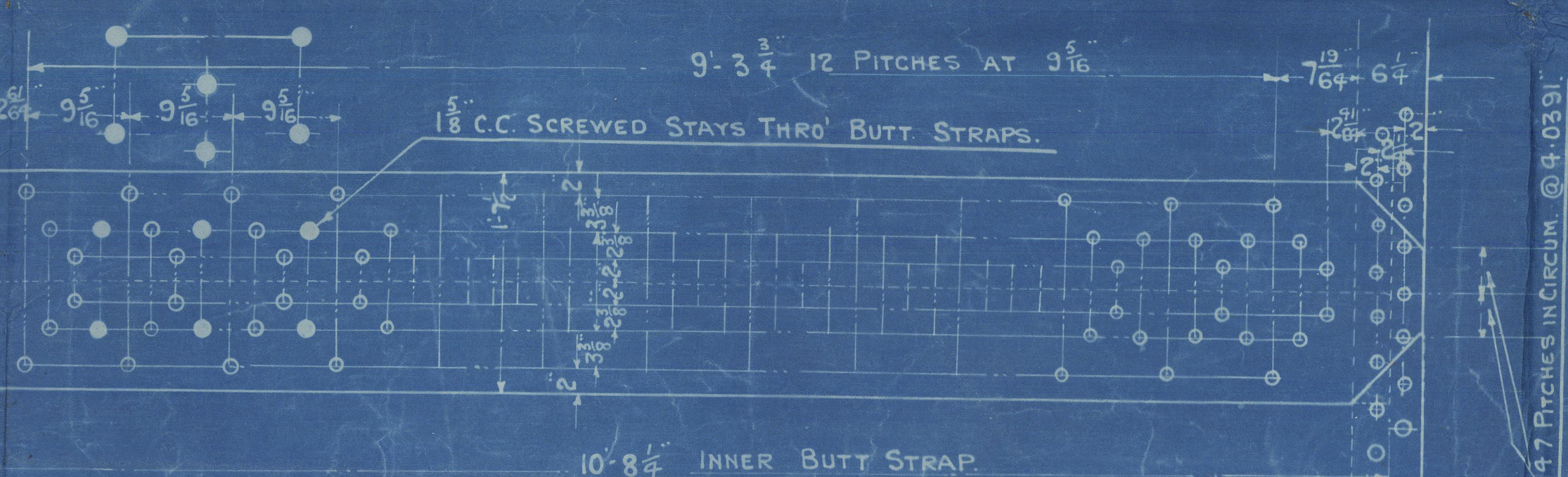


ALL PLATES & STAYS OF SIEMENS-MARTIN IN STEEL.
LONGITUDINAL SEAMS TREBLE RIVETED WITH DOUBLE BUTT STRAPS.
CIRCUMFERENTIAL SEAMS DOUBLE RIVETED LAP JOINT.
WORKING PRESSURE 180 LBS. / sq. IN.
TEST 320 " / sq. IN.
ALL HOLES DRILLED IN PLACE THEN PLATES TAKEN APART AND BURRS REMOVED.

THICKNESSES	
SHELL PLATES	1 1/2"
INNER BUTT STRAPS	1 1/2"
OUTER	1 1/2"
TOP ENDS	1 1/2"
BACK BOTTOMS-COVER PLATE	1 1/2"
FRONT 1/8" & FRONT BOT. END	1 1/2"
BACK	1 1/2"
C.C. BRICKS CENTRE	1 1/2"
WINGS	1 1/2"
TOP AND SIDES	1 1/2"
BOTTOM	1 1/2"
GIRDERS	1 1/2"
MANHOLE COMP. RING	1 1/2"
FURNACES	1 1/2"

TENSILE STRENGTHS	
SHELL PLATES - 28-32 TONS	
BUTT STRAPS	
GIRDER PLATES	
SOLID STEEL STAYS	
MANHOLE COMP. RING	
ALL OTHER PLATES - 20-30 TONS	
SCREWED STAYS - 21-25 TONS	
RIVET BARS - 20-30 TONS	

HEATING SURFACES	
HEATING SURFACE IN 453 TUBES	= 2328
IN C. CHANGERS & BACK TUBE PLATES	= 315
FURNACES	= 183
TOTAL H.S. IN ONE BOILER	= 2826
H.S. - 3 BOILERS	= 8478
FIREBARS 5'-6" LONG IN ONE LENGTH	
GRATE SURFACE - ONE BOILER	63 1/2
3 BOILERS	189 3/4
RATIO G.S. H.S. - 1	44.6
2 - 3/2" DIA. SAFETY VALVES ON EACH BOILER	



	RIVET DIA.	HOLE	PITCH	PLATE %	RIVET %	B. PLATE
LONGITUDINAL SEAM	1 1/4"	1 1/8"	9 1/2"	85.9	86.6	180 LBS.
CIRCUMFERENTIAL	1 1/4"	1 1/8"	4-0331	67.5%	45.7%	

BOILERS.
ENGINES N° 588.

3" OFF.
15'-9" MEAN DIA. X 12'-0" MEAN LENGTH.
TO PASS LLOYD'S REQUIREMENTS FOR 180 LBS. / sq. IN. W.P.

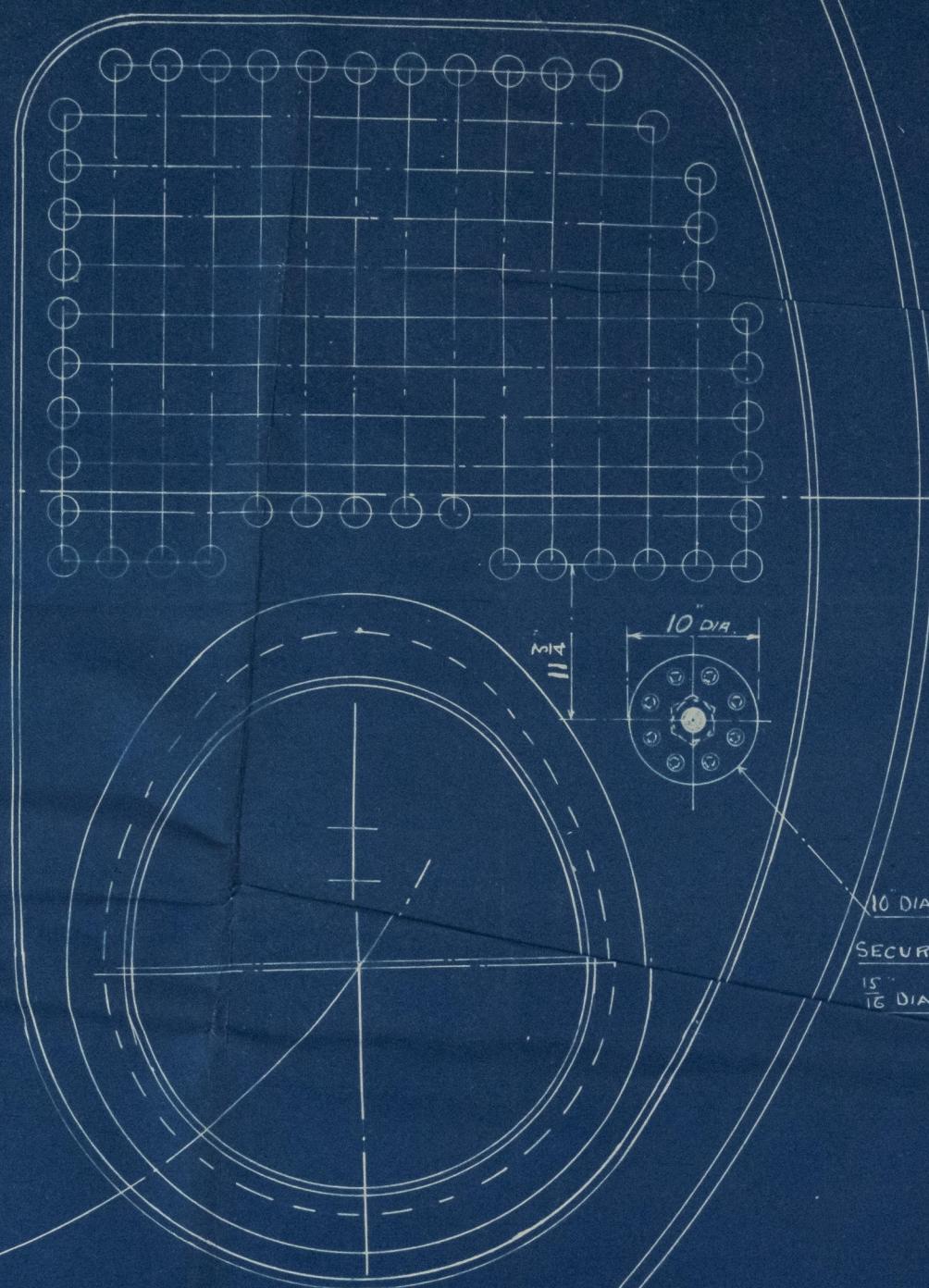
SCALE 1" = 1 FOOT.

APR 18 11 1921

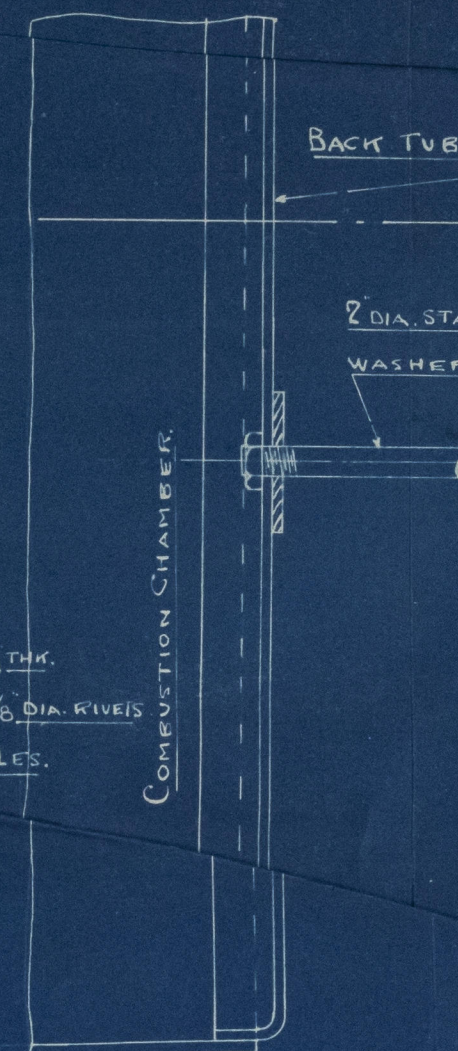
JOHN G. KINCAID & CO. LTD.
DRAWING OFFICE
1 DEO 1921
ENGINEERS & BOILERMAKERS
GREENOCK.

15TH JUNE 1920.

DRC. N° D.S.G.S.



10 DIA WASHER $\frac{5}{8}$ THK.
 SECURED BY 8- $\frac{7}{8}$ DIA. RIVETS
 15
 16 DIA. RIVET HOLES.



BACK TUBE PLATE.

2" DIA. STAY SCREWED THROUGH
 WASHER & BACK TUBE PLATE.

COMBUSTION CHAMBER.

ARRANGEMENT OF RIVETTED WASHER.
ON BACK TUBE PLATE.

ENG. N° 588.

SCALE 1" = 1 FOOT.

KINCAID & CO. LTD.
 DRAWING OFFICE
 10 JAN. 1922
 SOILMAKERS
 GLENCOCK



David's Red Sea
 Foundation

Kincaids h 588

(h 576)

180 h W.P.

Lithgow 00 h 736

S/S. Begun.

GREENOCK Report h. 18025

ENCLOSURE
N^o 733

Port h 1607

JOHN G. KINCAID & CO. LTD.
(DRAWING OFFICE.)
21 DEC 1921
ENGINEERS & BOILERMAKERS
GREENOCK.

ENCLOSURE
N^o 690

RETAIN

LR

© 1921

Lloyd's Register
Foundation

W1624-0013

ENCLOSURE
N^o 749

JOHN G. KINCAID & CO. LTD.
(DRAWING OFFICE.)
20 JAN. 1922
ENGINEERS & BOILERMAKERS
GREENOCK.



© 2021

Lloyd's Register
Foundation