

CANADIAN ICE BREAKING STEAMER.

T.S.S. No 877.B.

MIDSHIP SECTION.

292'-0" O.A.
DIMENSIONS: 275'-0" B.P. x 57'-6" M.L.D. x 32'-0" M.L.D. TO UPPER DECK.

SCALE 1/2" = 1 FT.

CLASS 100 A.I. LLOYDS

BREADTH M.L.D. 57'-5"

DEPTH M.L.D. 32'-0"

89-5 Transverse No.

96% OF LENGTH OR 260-32

25086855 Longitudinal No.

L. to D. 280-32
32' = 8-72

LONGITUDINAL No 25086
FORECASTLE 64-7-75 360
DECKHOUSE 16-17-50 120
250-7-32 86
EQUIPMENT NUMBER 25670V

NAVAL CONSTRUCTION WORKS
SHIPYARD DEPT
VICKERS LIMITED
22 MAY 1914
BARROW-IN-FURNESS

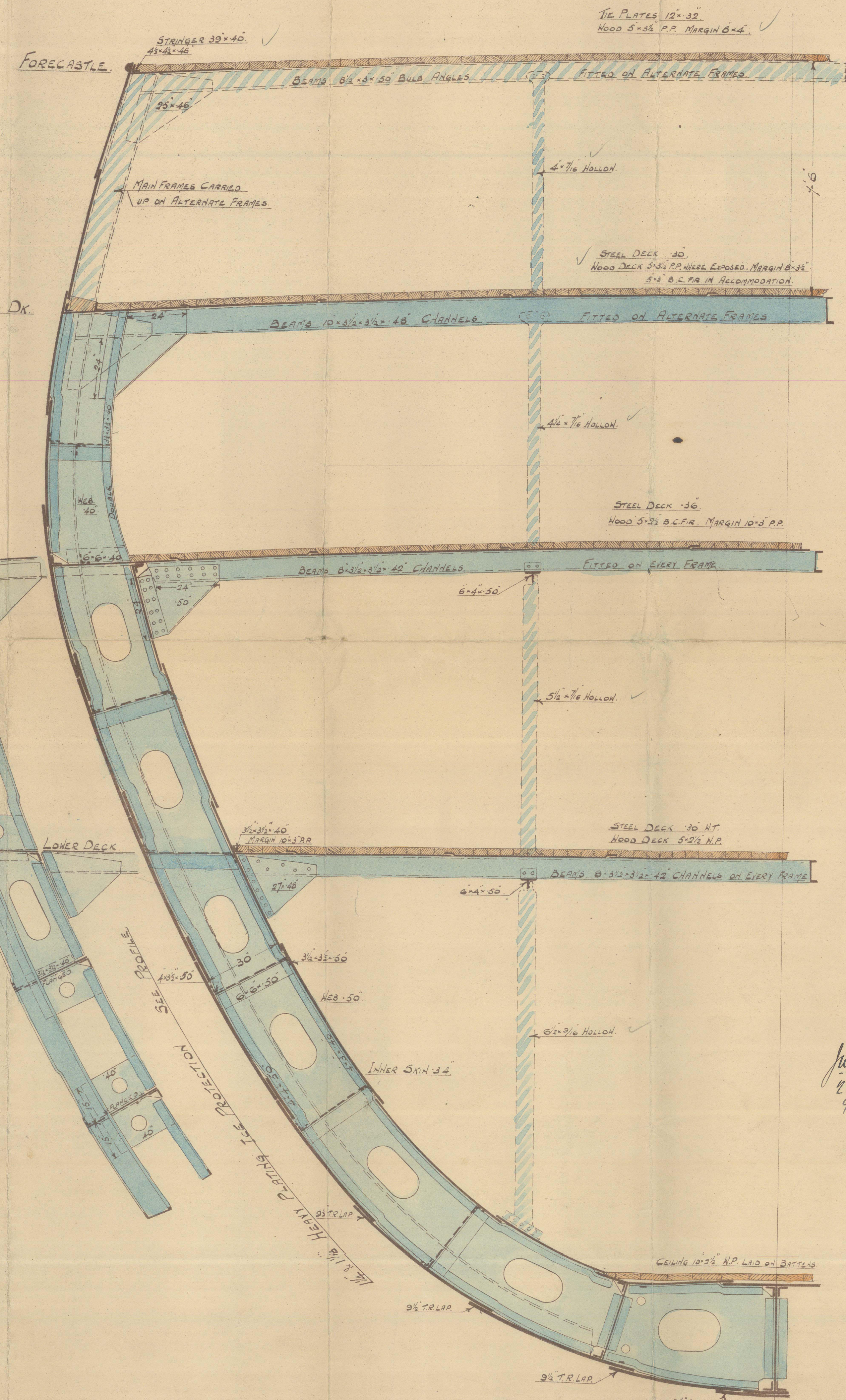
RIGGING

5/8" PLATE KEEL 1" DOUBLING BUTTSTRAPS.
TREBLE RIVETED. 1/8" TO 7/16" THICK.
BUTTS OF SHEERSTRONG & STRAKE ALONG SHEERSTRONG.
TREBLE RIVETED LAP 1/8" & 3/16" AP.
BUTTS OF THICK PLATING IN WAY OF ICE BELT QUADRUPLE
RIVETED BUTTSTRAPS. SEAMS TREBLE RIVETED EDGE STRAPS
EDGE THICKNESS AS PLATING THEY CONNECT.
REMAINDER OF SHELL PLATING, BUTTS TREBLE RIVETED OVERLAP
FOR 1/2 LENGTH DOUBLE AT ENDS. SEAMS DOUBLE RIVETED FORE & AFT
FORECASTLE. SIDE PLATING BUTTS DOUBLE. SEAMS SINGLE.
PARKS CONNECTED TO STEIN'S STEIN POST BY TREBLE RIVETING.
SPACING OF RIGGS TOP. ALL DECK BEAMS EXCEPT FORECASTLE,
BRIDGE & UPPER DECK. 7' DIA. RIGGS ON TOP.
SPACING OF RIGGS 7' DIA. FORECASTLE, BRIDGE UPPER DECK
BEAMS 6' DIA. RIGGS ON TOP.
DECK TA PLATES BUTTS LAPPED & DOUBLE RIVETED
UPPER & MAIN DECK. STRAKER BUTTS TREBLE RIVETED OVERLAP
FOR 1/2 LENGTH DOUBLE AT ENDS.
LOWER DECK STRAKER BUTTS DOUBLE RIVETED OVERLAP
FORECASTLE & BRIDGE DECK STRAKER DOUBLE RIVETED OVERLAP BUTTS
UPPER & MAIN DECK. PLATING BUTTS DOUBLE RIVETED OVERLAP FOR 1/2
REMAINDER OF BUTTS 1/2" SEAMS SINGLE RIVETED OVERLAP.
LOWER DECK BUTTS & SEAMS SINGLE RIVETED OVERLAP.
BULKHEAD PLATING BUTTS & SEAMS SINGLE RIVETED DOUBLE AT DEEP TANK
SEAMS DOUBLE TREBLE RIVETED OVERLAP.
TANK MARGIN DOUBLE RIVETED OVERLAP.
TANK TOP. MIDDLE LINE STRAKE BUTTS LAPPED & DOUBLE RIVETED
TANK TOP BUTTS DOUBLE RIVETED OVERLAP FOR 1/2" SINGLE AT ENDS
SEAMS SINGLE ALL FORE & AFT.

MAIN SCANTLINGS

STEEL CASTING
STERN FRAME
RUDDER STOCK 14" DIA.
PINNACLE 7 1/4" DIA.
FRAMES MAIN FORE PEAK TO FRAME 126 12'-4" 60 BULB ANGLES SPACED 16" APART.
FRAME 126 97 10'-4" 44 50 CHANNELS 16"
97 95 12'-4" 60 BULB ANGLES 16"
92 97 12'-4" 60 BULB ANGLES 16"
INTERMEDIATE 70-87 10'-4" 44 50 CHANNELS 16" IN WAY OF 24" SPACING SEE SECTION FOR LENGTH
IN DOUBLE BOTTOM 54-55-56
RELEASE FRAMES IN 46 IN BULK SPACE
FLOORS AFT OF DOUBLE BOTTOM 46
" IN WAY OF ENGINE ROOM 46
" BULKHEAD 40-46
" FORWARD OF DOUBLE BOTTOM 50
WEB FRAMES PLATE 24-50. BETWEEN MAIN'S UPPER DECK 24-56
SHELL BAR 42-45-50
FACE BARS 51-55-50 DOUBLE
BULKHEADS PLATING LOWER 48 UPPER 50 EXCEPT NO 126 LOWER 50 UPPER 51 NO 122 LOWER 48 UPPER 50
STRAKER 8'-4" 50 CHANNELS SPACED 30" APART. 24" ON FORE PEAK BULKHEAD.
ON BULKHEADS 51 TO 125 10'-4" 44 50 CHANNELS
FRAMES 54-55-50
DECK ANGLES 4'-4" 36.

FORWARD SECTION.



29.5.14
9.6.14
30.6.14
11.7.14
23.7.14

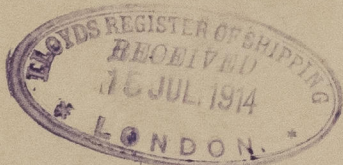
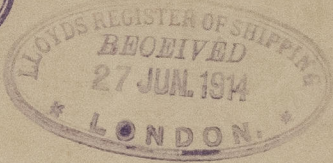
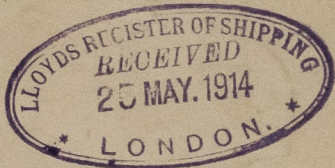
EQUIPMENT.

3 Bower Anchors (Stockless)	45 1/4 CWT.
1 Steam (R.A. Stock)	13
1 Keel	5 1/4
2 Ice Anchors.	
270 Tonnage	2 Dia Stud Link Cable
80	45 Steel Wire Strake
120	5% Tonnage
120	4
2-90	7" Manila Hensere
2-90	7" Wards

28.5.14
9.6.14

Thias his Section.
Canadian Icebreaking Steamer
Messrs
Tuckers L^{td}

Brew



S/S "Mikhula Selianinovitch"
Int'l. Rpt. No. 1362.

RETAIN



6

1

CANADIAN VICKERS - ICE BREAKER

MIDSHIP SECTION



© 2021

Lloyd's Register
Foundation