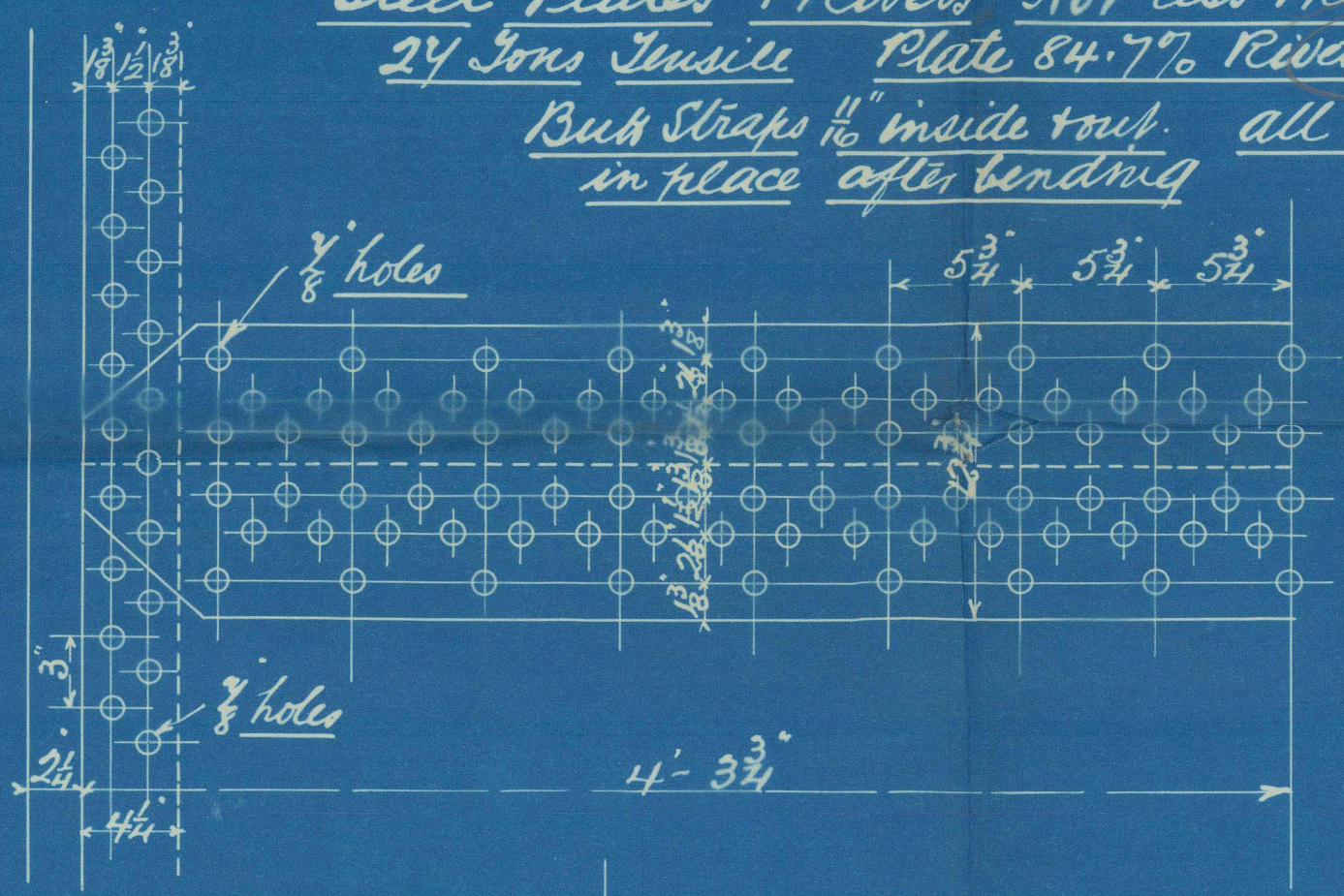


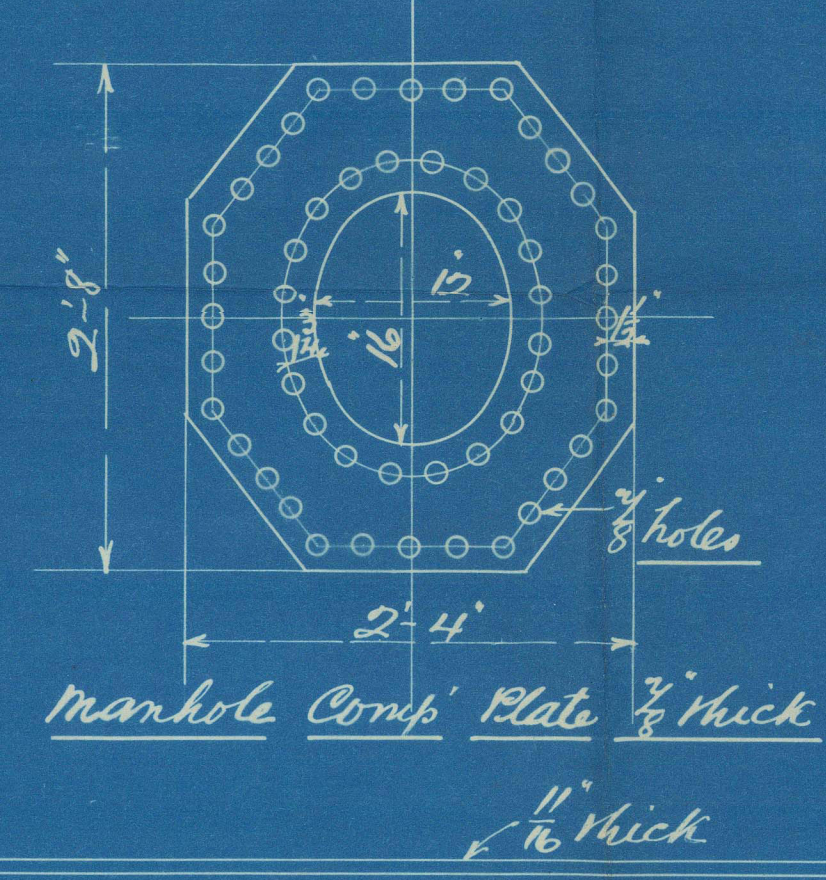
Steel Plates + Rivets not less than  
24 Tons Tensile Plate 84.77% Rivets 84.69%  
Bulk Straps  $\frac{1}{2}$ " inside temp. all holes drilled  
in place after bending



BOILER N<sup>o</sup> A5 130 LBS W.P.

TO LLOYDS SCALE 1" = 1 FOOT

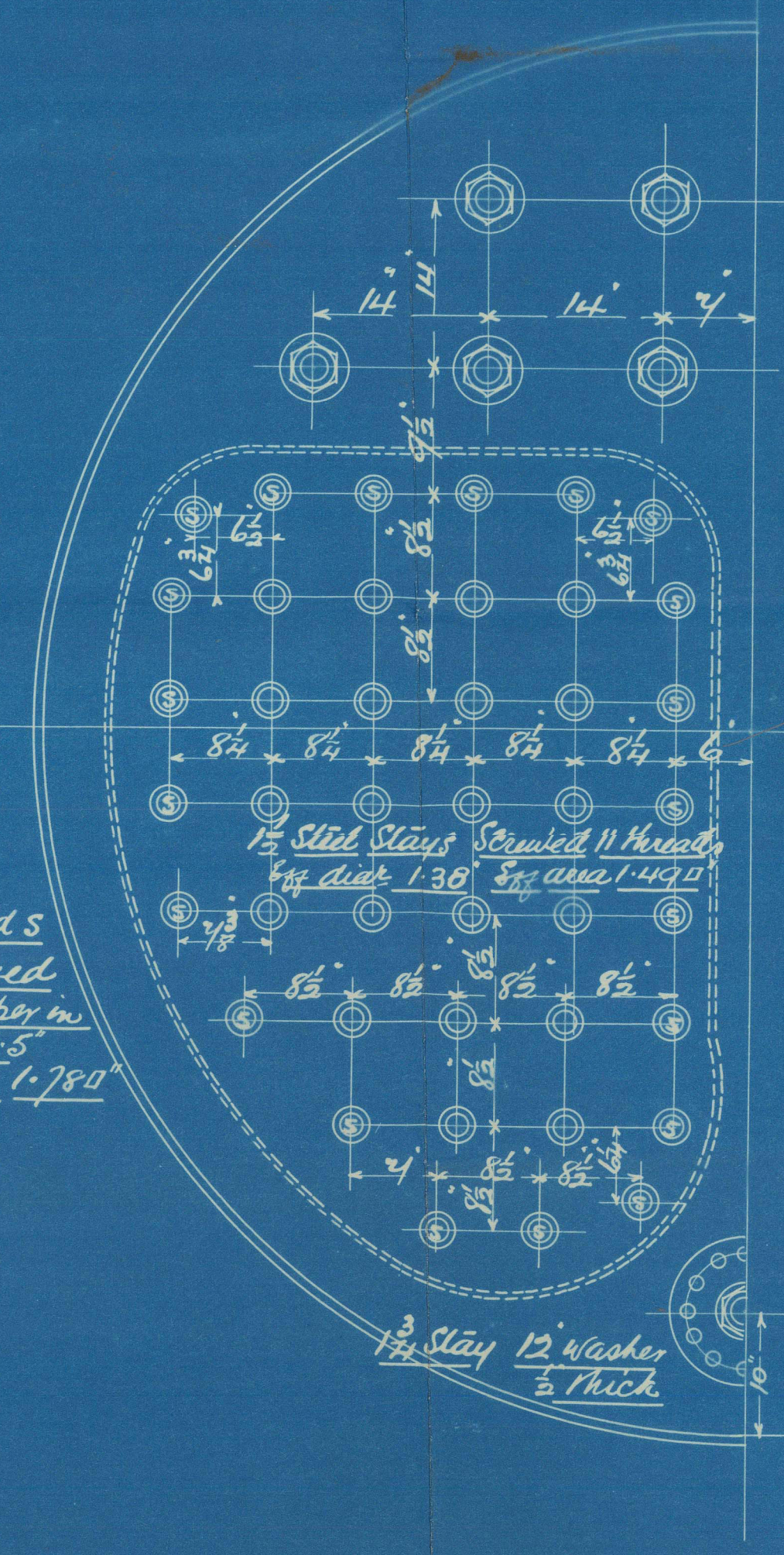
JANUARY 18<sup>TH</sup> 1907



— Heating Surface —

Tubes	644.34 sq feet
Furnaces	51.75 "
Combustion Chambers	36.80 "
Tube Plates	28.00 "
Total Heating Surface	799.12 "
Grate area	25.44 "

Stays marked S  
1 1/2 dia: Screwed  
11 Threads per in  
876 dia: 1.5"  
876 area 1.780"





St central Cooperative  
Engineering & Ship  
Repairing Co<sup>ld</sup>

Boiler No A 5

Working Pressure

130 225

See Report 4819.



RETAIN



© 2021

Lloyd's Register  
Foundation

W1611E0245