

14.7.37

No 287 **MIDSHIP SECTION.**

DIMENSIONS - LENGTH 464'2 1/2 B.P. · 61'9 BREADTH MLD · 34'0 1/2 DEPTH MLD TO UPPER D^K

TO CLASS LLOYDS 100A1 "CARRYING PETROLEUM IN BULK" WITH
"LONGITUDINAL FRAMING AT BOTTOM & AT DECK."

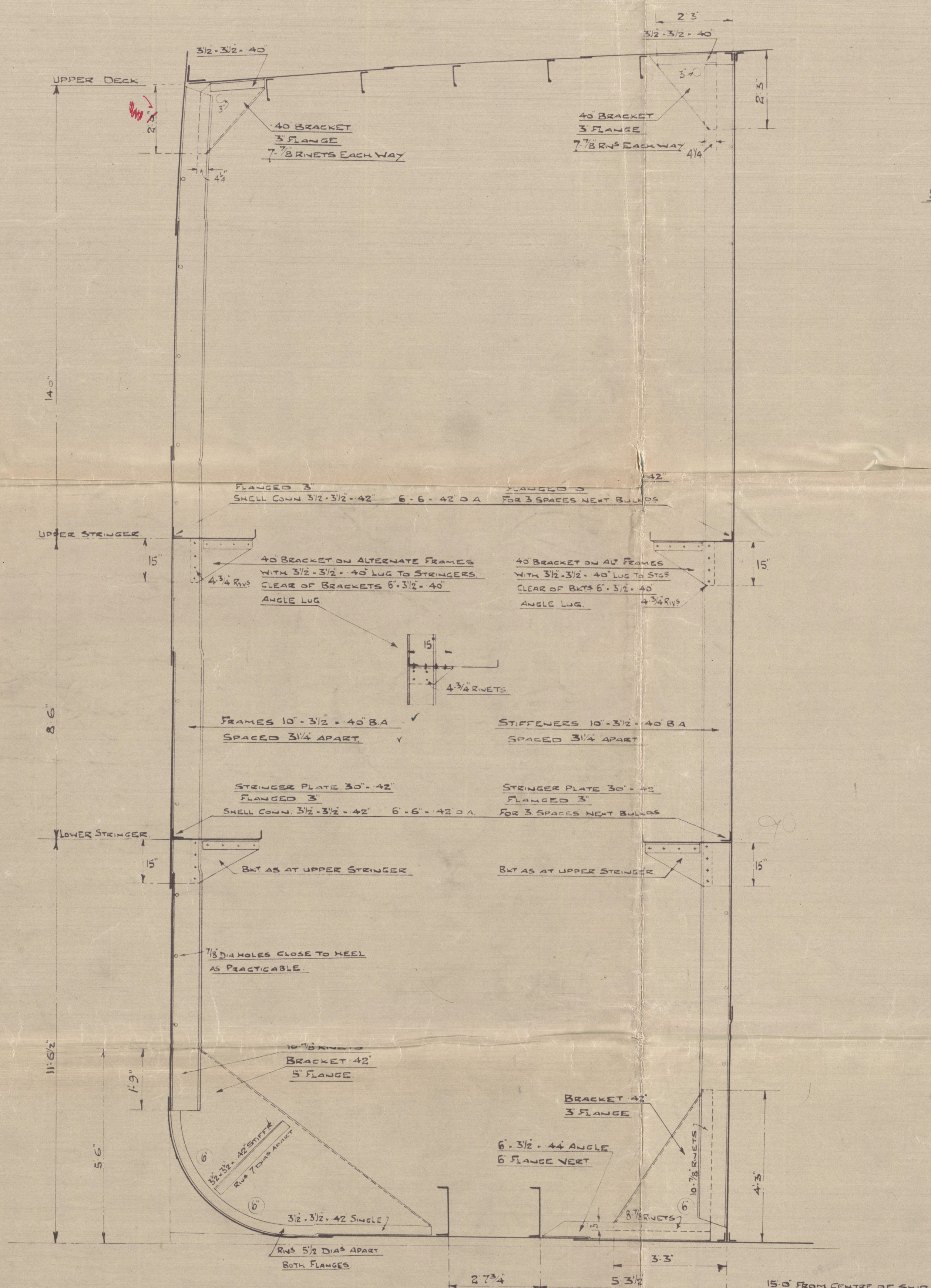
SCALE 1/2 INCH = 1 FOOT.

NOTE -
ALL B.A. SECTIONS ARE NEW BRITISH STANDARD
REVISED JULY 1924.

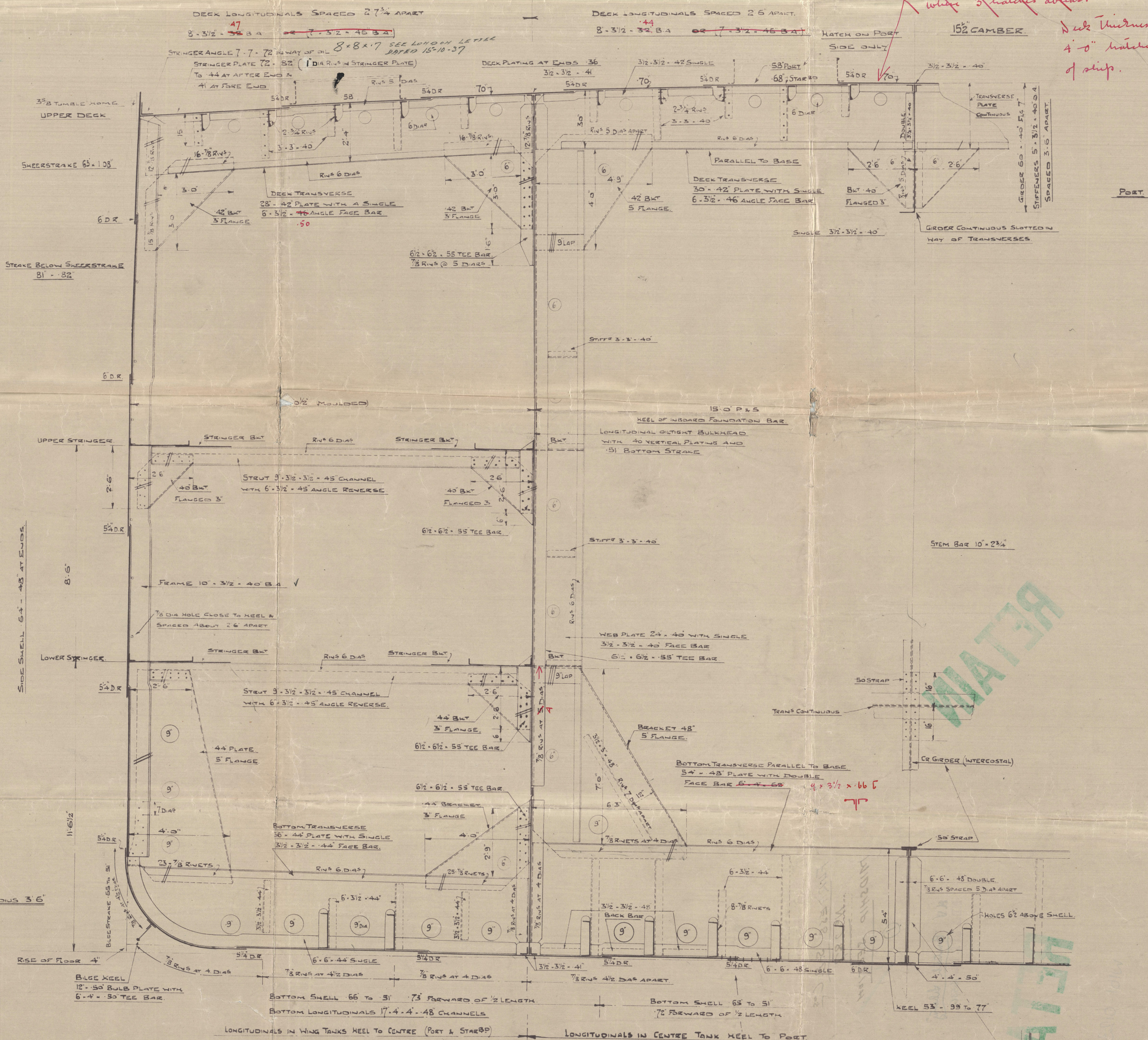
LLOYDS NUMERALS.
DEPTH D = 34'04
L · D = 15801
L · (B + D) = 44466.
L / D = 13.63.

EQUIPMENT NUMBER.	
L · (D · B)	= 44466
PEOP (18 00 · 8 4 · 3/4) · (28 · 8 08 · 3/4)	= 647
BRIDGE 36 00 · 8 00 · 3/4	= 216
FORECASTLE 63 96 · 8 00 · 3/4	= 384
PEOP HOUSE 100 00 · 8 00 · 1/2	= 400
BRIDGE HOUSE 37 00 · 8 00 · 1/2	= 148
FLYING BRIDGE HOUSE 33 50 · 7 50 · 1/2	= 125
TOTAL	= 46386

EQUIPMENT	
1 BOW ANCHOR (STEELLESS) WEIGHING 83 1/2 CWT	81 1/4
1 " " " " " " " "	6 1/2
1 STEAM ANCHOR (E. STACK)	23 1/2
300 FATHOMS OF 2 1/2" STUD CHAIN CABLE	
123 " " " " " " " "	4 3/4 (6.24) STEEL WIRE STRAIN
130 " " " " " " " "	5 1/2 (6.24) " " " "
4 @ 100 " " " " " " " "	3" MANILLA HAWSERS & WARPS



SECTION THRO WING TANKS.



SECTION AT MIDSHIP TRANSVERSE.
LOOKING AFT.

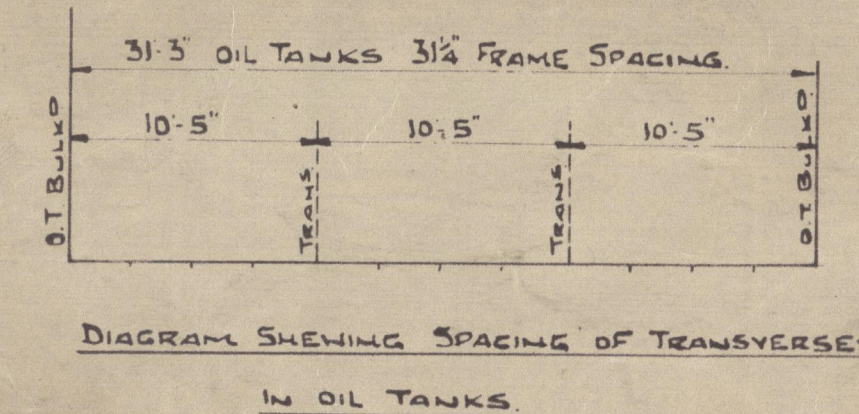
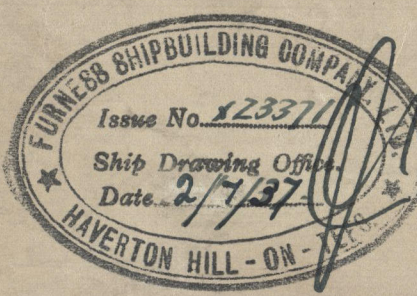


Diagram showing spacing of transverse in oil tanks.



FURNESS S.B. CO^s

Nº 287

MIDSHIP SECTION.

①

M.V. "British Liberty"

MDB. RPT. No. 16536

RETAIN

RETAIN

W161-0123



© 2020

Lloyd's Register
Foundation