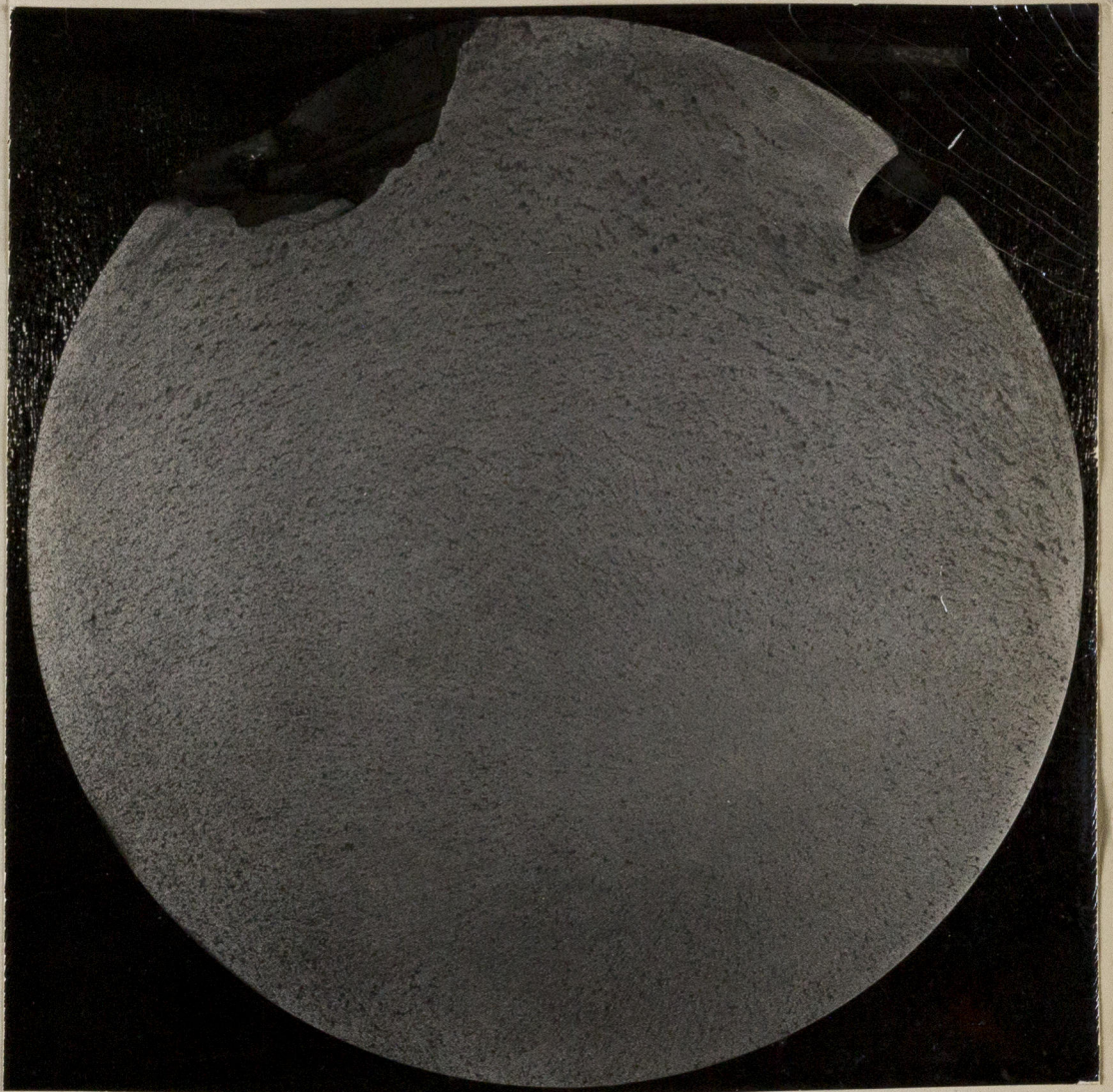


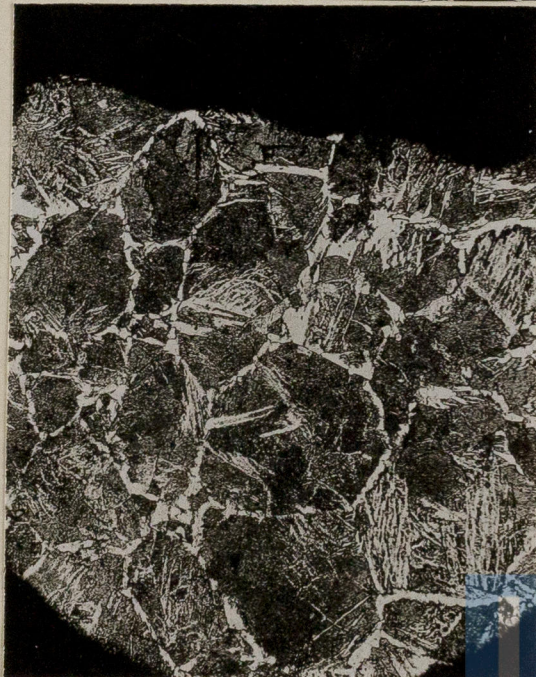
Ma 4621

Abb. 3

o.6 nat.Gr.



Mi 6855



Ma
4627



FRIED. KRUPP Aktiengesellschaft, ESSEN. Abb. 4

Stahlbetriebe Versuchsraum

Vx100

Abb. 5
nat.Gr.

Lloyd's Register
Foundation

83255

Ms. Don Estaban

Manuscript No. 2671.



© 2020

Lloyd's Register
Foundation

W161-0032