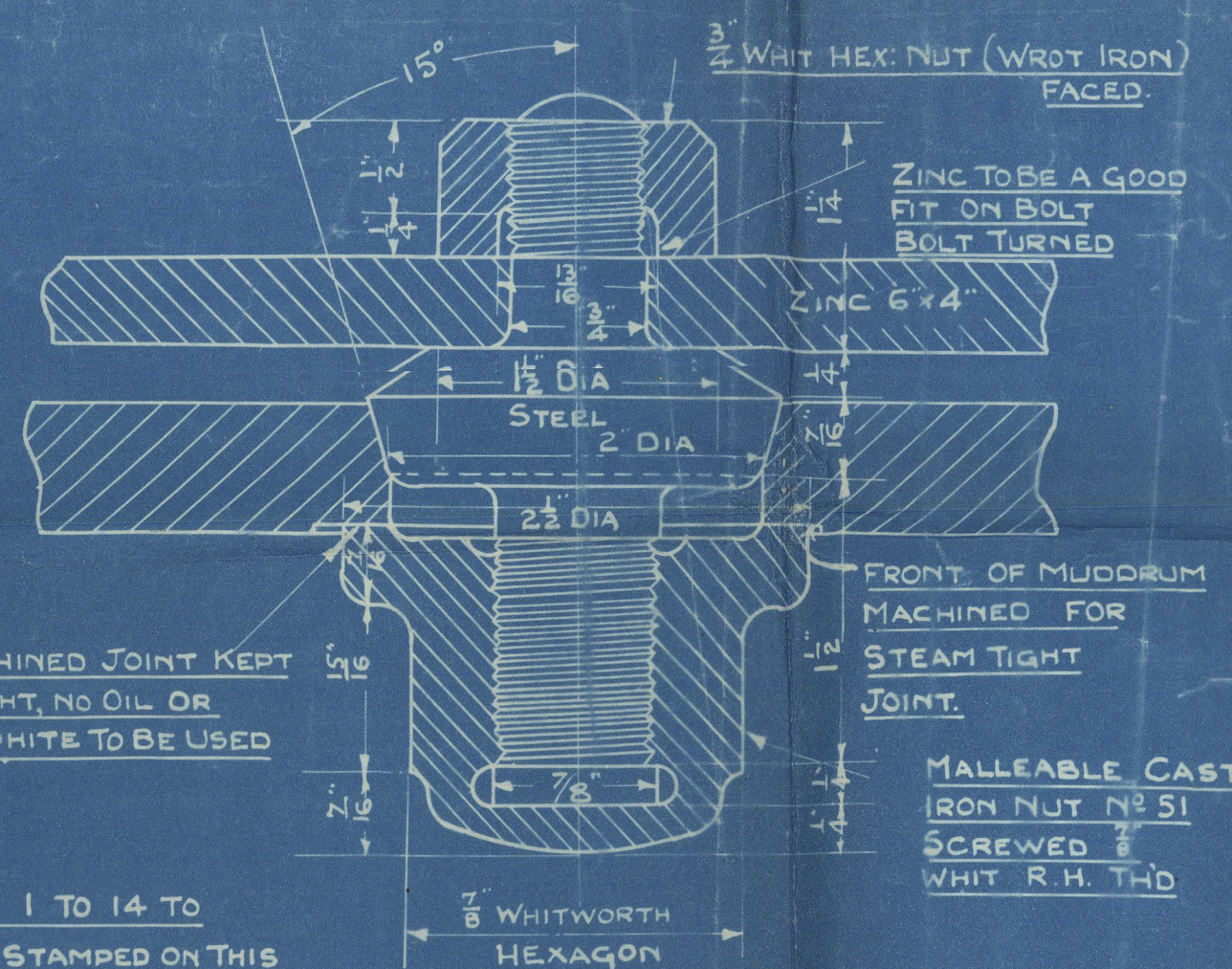


THE TOP RETURN TUBES ARE TO PROJECT BEYOND THE TUBE SEAT IN HEADERS  $\frac{1}{2}$ " THRO' THE TUBE SEATS IN STEAM DRUM NOT LESS THAN  $\frac{1}{2}$ " OR MORE THAN  $\frac{1}{4}$ ". ANY EXCESS LENGTH TO BE CUT OFF WHEN BOILER IS ERECTED



GENERAL THICKNESS OF HEADER =  $\frac{7}{16}$ "  
MINIMUM THICKNESS EDGE OF TUBE HOLES  $\frac{7}{16}$ "  
MINIMUM THICKNESS FOR MACHINED SURFACE OF HANDHOLES  $\frac{11}{32}$ "  
MINIMUM THICKNESS LOCAL PATCHES NOT EXCEEDING  
AN AREA OF  $\frac{1}{2}$ " SQUARE INCH =  $\frac{1}{4}$ "

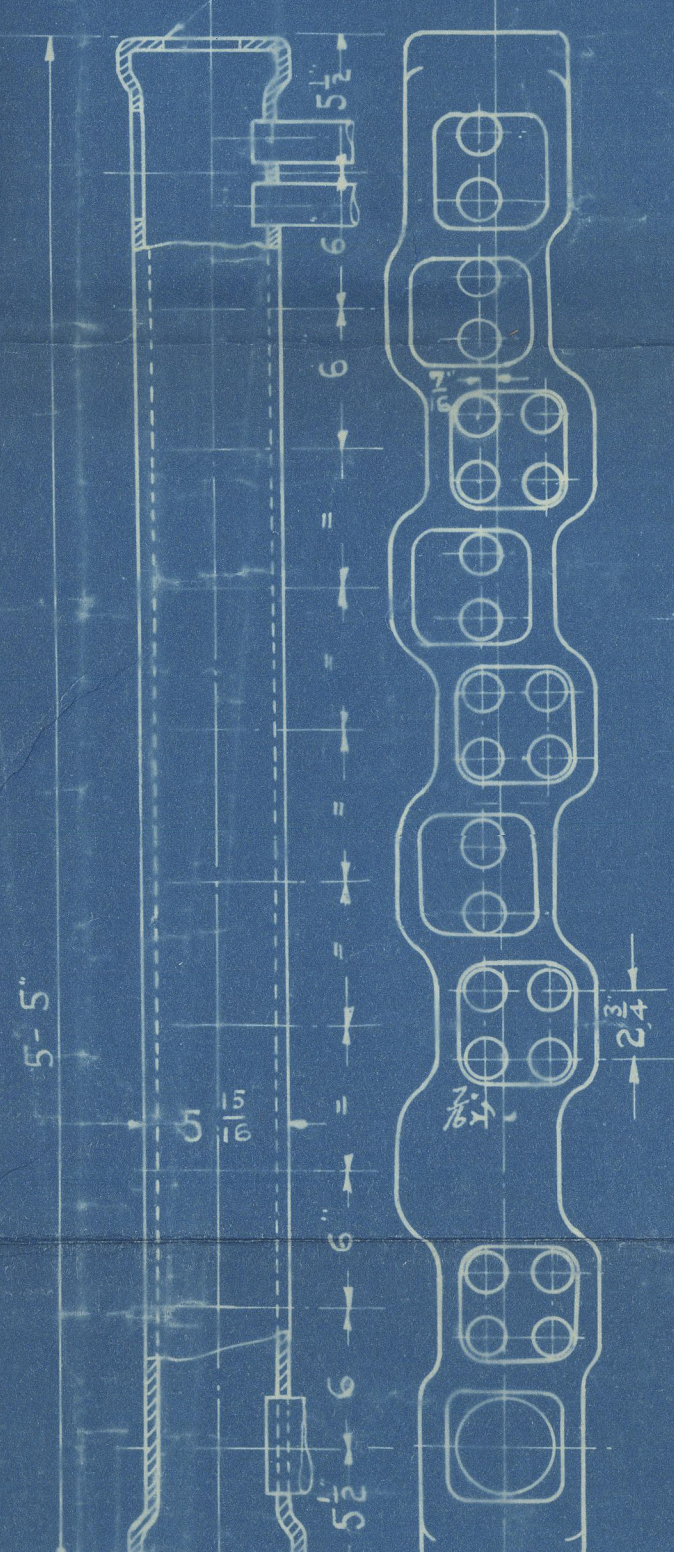
DETAIL OF ZINCS & HOLDERS  
FULL SIZE

"D"		
24	TUBE HOLES	MAX. $1\frac{1}{8}$ " MIN. $1\frac{1}{8}$ "
1	TUBE HOLE	MAX. $4\frac{1}{2}$ " MIN. $4\frac{1}{2}$ "
2	NIPPLE HOLES IN END	MAX. $4\frac{1}{2}$ " MIN. $4\frac{1}{2}$ "
9	$4\frac{1}{16}$ " SQ. HAND HOLES	

"E"		
32	TUBE HOLES	MAX. $1\frac{1}{8}$ " MIN. $1\frac{1}{8}$ "
1	TUBE HOLE	MAX. $4\frac{1}{2}$ " MIN. $4\frac{1}{2}$ "
2	NIPPLE HOLES IN END	MAX. $4\frac{1}{2}$ " MIN. $4\frac{1}{2}$ "
9	$4\frac{1}{16}$ " SQ. HAND HOLES	

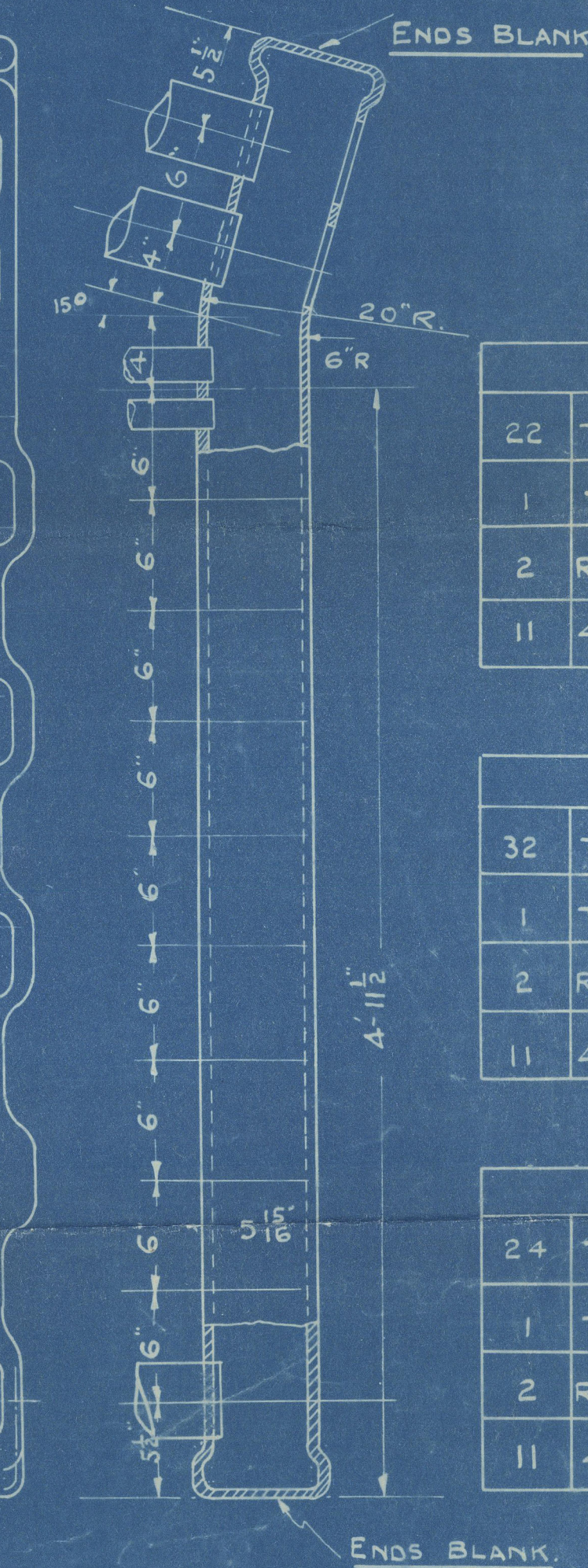
"F"		
24	TUBE HOLES	MAX. $1\frac{1}{8}$ " MIN. $1\frac{1}{8}$ "
1	TUBE HOLE	MAX. $4\frac{1}{2}$ " MIN. $4\frac{1}{2}$ "
2	NIPPLE HOLES IN END	MAX. $4\frac{1}{2}$ " MIN. $4\frac{1}{2}$ "
9	$4\frac{1}{16}$ " SQ. HAND HOLES	

ENDS BORED  
MAX.  $4\frac{3}{4}$ "  
MIN.  $4\frac{1}{4}$ "



DOWNTAKE HEADERS

UPTAKE HEADERS



"A"		
22	TUBE HOLES	MAX. $1\frac{1}{8}$ " MIN. $1\frac{1}{8}$ "
1	TUBE HOLE	MAX. $4\frac{1}{2}$ " MIN. $4\frac{1}{2}$ "
2	RETURN TUBE HOLES	MAX. $4\frac{1}{2}$ " MIN. $4\frac{1}{2}$ "
11	$4\frac{1}{16}$ " SQ. HAND HOLES	

"B"		
32	TUBE HOLES	MAX. $1\frac{1}{8}$ " MIN. $1\frac{1}{8}$ "
1	TUBE HOLE	MAX. $4\frac{1}{2}$ " MIN. $4\frac{1}{2}$ "
2	RETURN TUBE HOLES	MAX. $4\frac{1}{2}$ " MIN. $4\frac{1}{2}$ "
11	$4\frac{1}{16}$ " SQ. HAND HOLES	

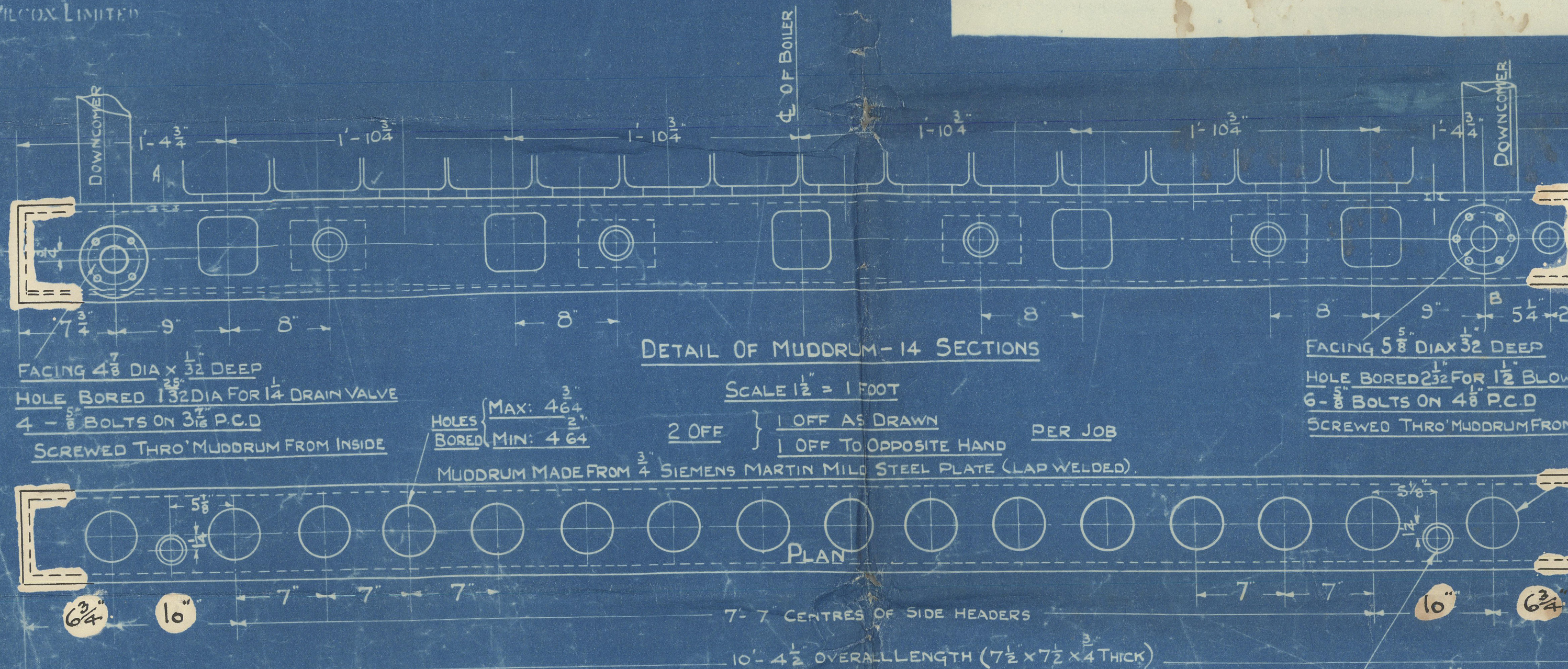
"C"		
24	TUBE HOLES	MAX. $1\frac{1}{8}$ " MIN. $1\frac{1}{8}$ "
1	TUBE HOLE	MAX. $4\frac{1}{2}$ " MIN. $4\frac{1}{2}$ "
2	RETURN TUBE HOLES	MAX. $4\frac{1}{2}$ " MIN. $4\frac{1}{2}$ "
11	$4\frac{1}{16}$ " SQ. HAND HOLES	

ARRANGEMENT OF PRESSURE PARTS

SCALE 1" = 1 FOOT  
14 SECTIONS WIDE

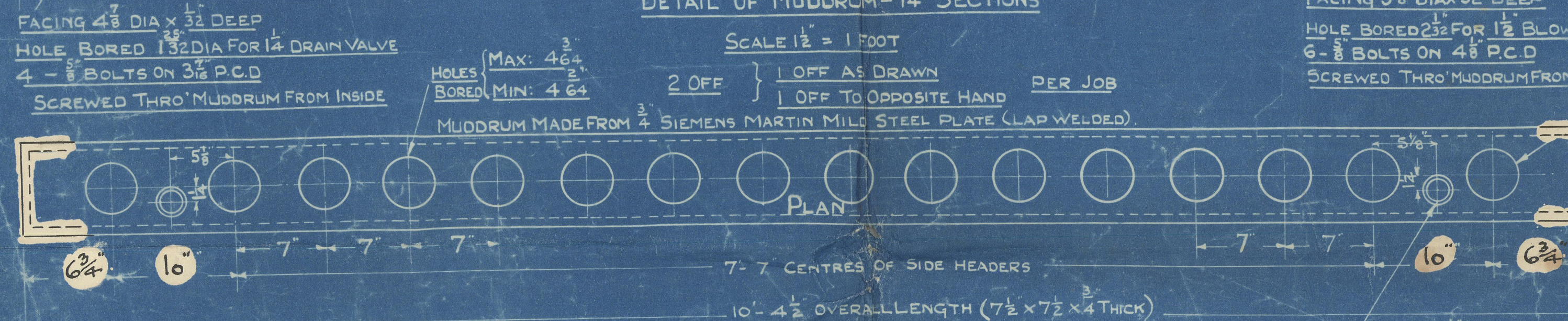
LOAD ON BOILER SAFETY VALVE = 270 LBS Q"  
TEST PRESSURE = 455 LBS Q"

THIS DESIGN IS THE PROPERTY OF BABCOCK & WILCOX LIMITED AND IS ONLY ALLOWED TO BE USED BY EXPRESS PERMISSION AND LICENSE FROM BABCOCK & WILCOX LIMITED



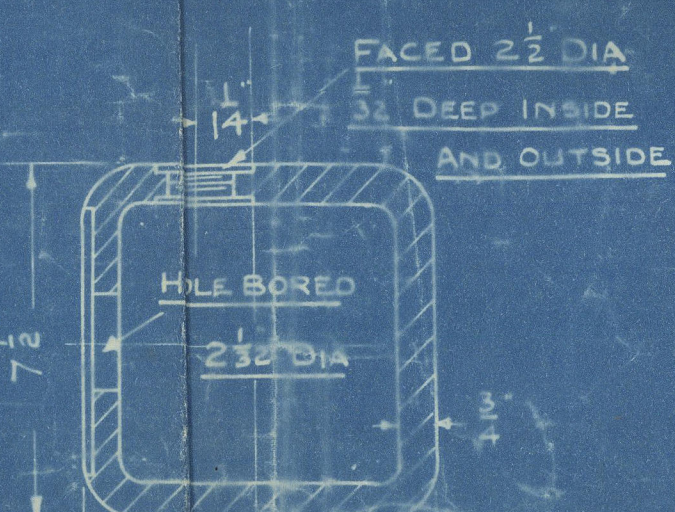
DETAIL OF MUDDRUM - 14 SECTIONS

SCALE 1 1/2" = 1 FOOT



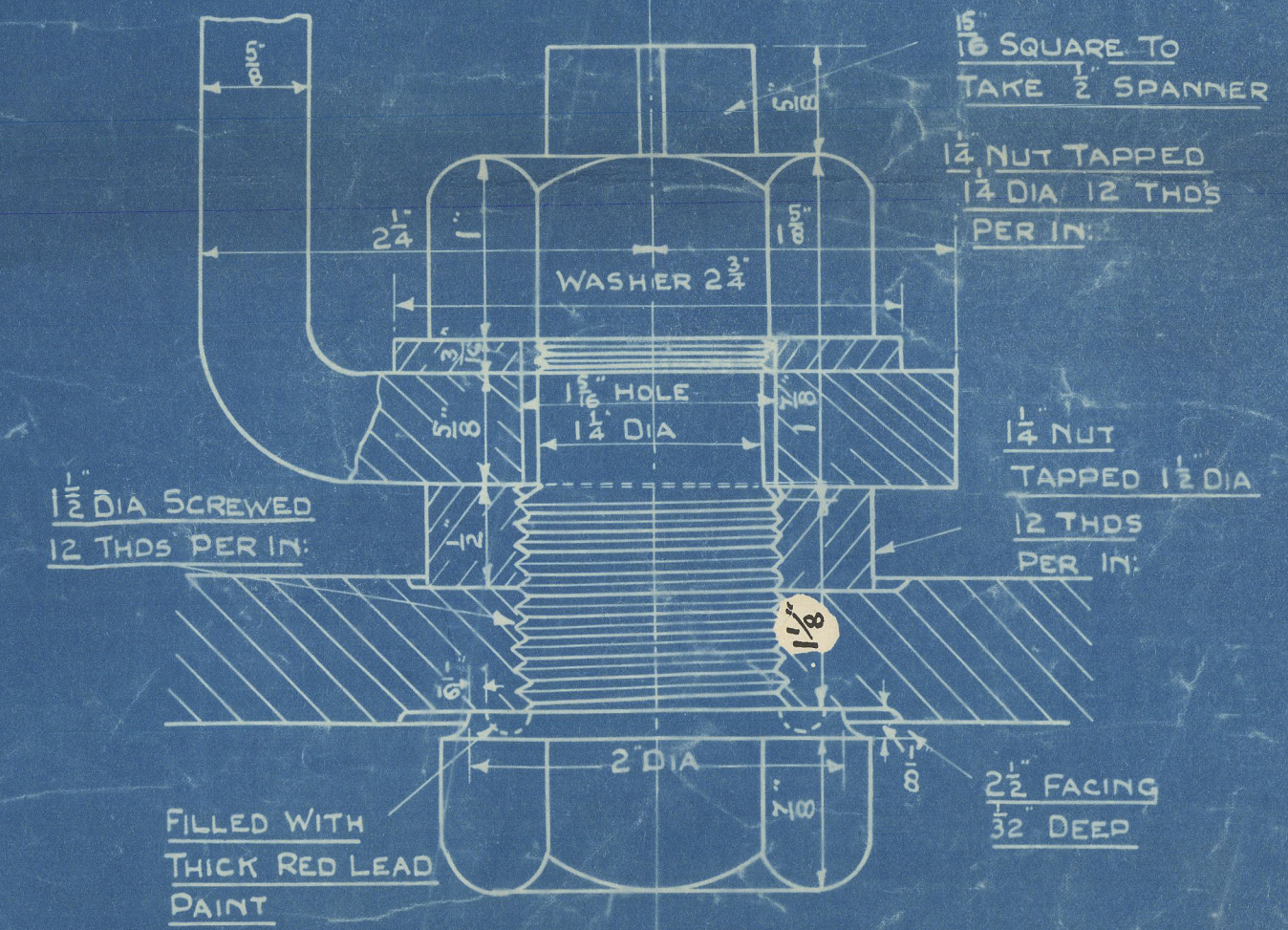
DETAIL OF DOWNTAKE TUBES

HOLE FOR SALINOMETER COCK  
SCREWED 1 I.P.S.



SECTION AT "A" B

LIST OF MATERIAL PER BOILER	
NO OFF	DESCRIPTION
1	1 STEAM & WATER DRUM TO DETAIL D 5334/4
1	MUDDRUM TO DETAIL
12	UPTAKE CENTRE HEADER TYPE "B" TO DETAIL
12	DOWNTAKE CENTRE HEADER TYPE "E" TO DETAIL
2	UPTAKE SIDE HEADER TYPE "A & C" TO DETAIL
2	DOWNTAKE SIDE HEADER TYPE "D & F" TO DETAIL
14	INCLINED TUBES 4" O.DIA X 10 L.S.G. THICK (128) X 8' 6" LONG
376	INCLINED TUBES 1 1/2" O.DIA X 10 L.S.G. THICK (128) X 8' 6" LONG
54	INCLINED TUBES 1 1/2" O.DIA X 8 L.S.G. THICK (16) X 8' 6" LONG
28	STRAIGHT RETURN TUBES 4" O.DIA X 5 L.S.G. THICK (212) X 7' 6" LONG (ORDERED LENGTH)
14	CIRCULATING NIPPLES 4" O.DIA X 5 L.S.G. THICK (212) X 1' 2" LONG
14	MUDDRUM NIPPLES 4" O.DIA X 5 L.S.G. THICK (212) X 3' 6" LONG
280	4 1/16" SQ. HANDHOLE FITTINGS FOR HEADERS NO 58 CLAMP 77 BRIDGE
5	4 1/16" SQ. HANDHOLE FITTINGS FOR MUDDRUM NO 58A CLAMP 77 BRIDGE
2	ANCHOR BOLTS FOR MUDDRUM TO DETAIL
4	ZINCS & HOLDERS FOR MUDDRUM TO DETAIL
2	DOWNTAKE TUBES 4" O.DIA X 5 L.S.G. THICK (212) X 6' 6" LONG (ORDERED LENGTH)



ANCHOR BOLTS FOR MUDDRUM  
FULL SIZE

ARRANGEMENT OF PRESSURE PARTS & DETAILS OF HEADERS MUDDRUMS ETC

SCALE AS SHOWN

BABCOCK & WILCOX LTD  
MARINE DEPT  
FARRINGTON ST LONDON E.C.4

TO LLOYD'S SURVEY AND TO CONFORM TO  
CANADIAN STEAM BOAT INSPECTION LAW

6/1231  
DBN 5334/3  
Lloyd's Register  
DATE 1-12-1927  
W16-0066



Babcock & Wilcox Ltd.

Boiler No 6/1231.

W.P. 270 lbs.

Pressure Parts

Details of Headers &  
Muddums etc.

GLASGOW REPORT No 48719

W16-0066



© 2020

Lloyd's Register  
Foundation