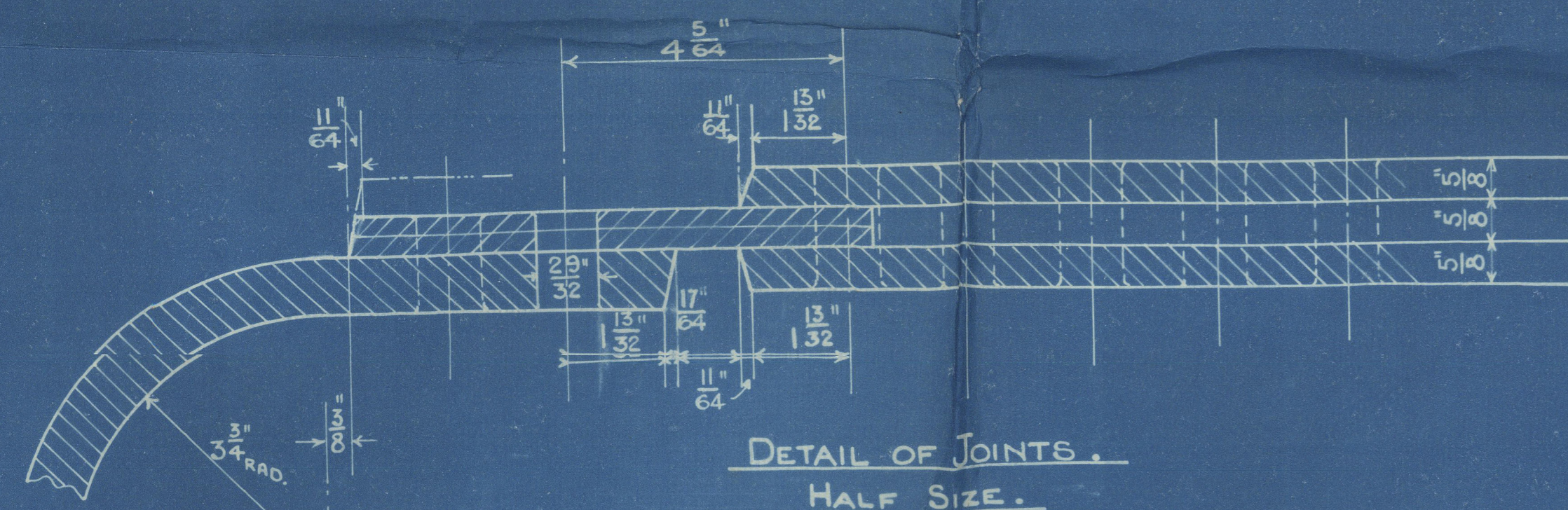
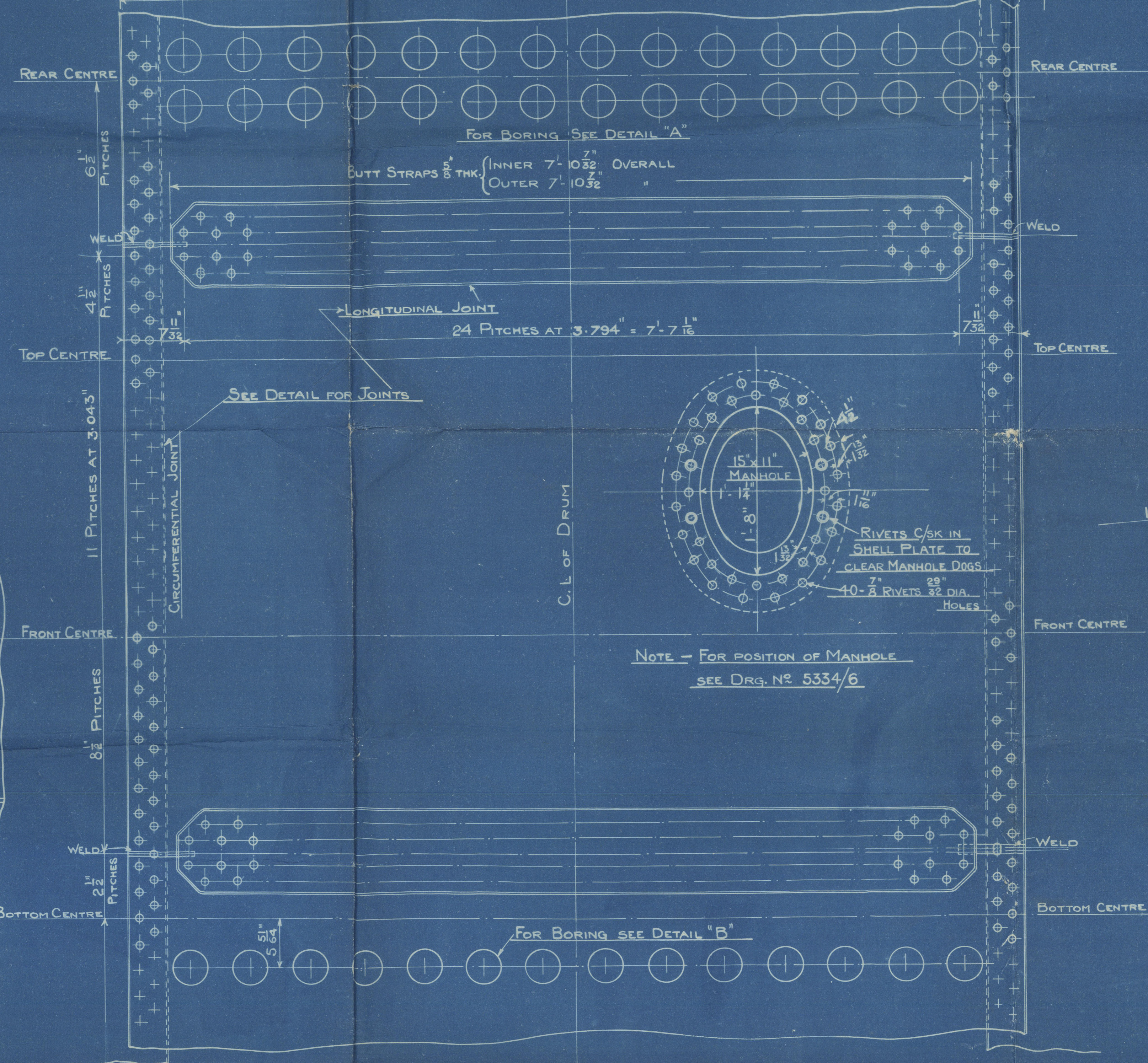


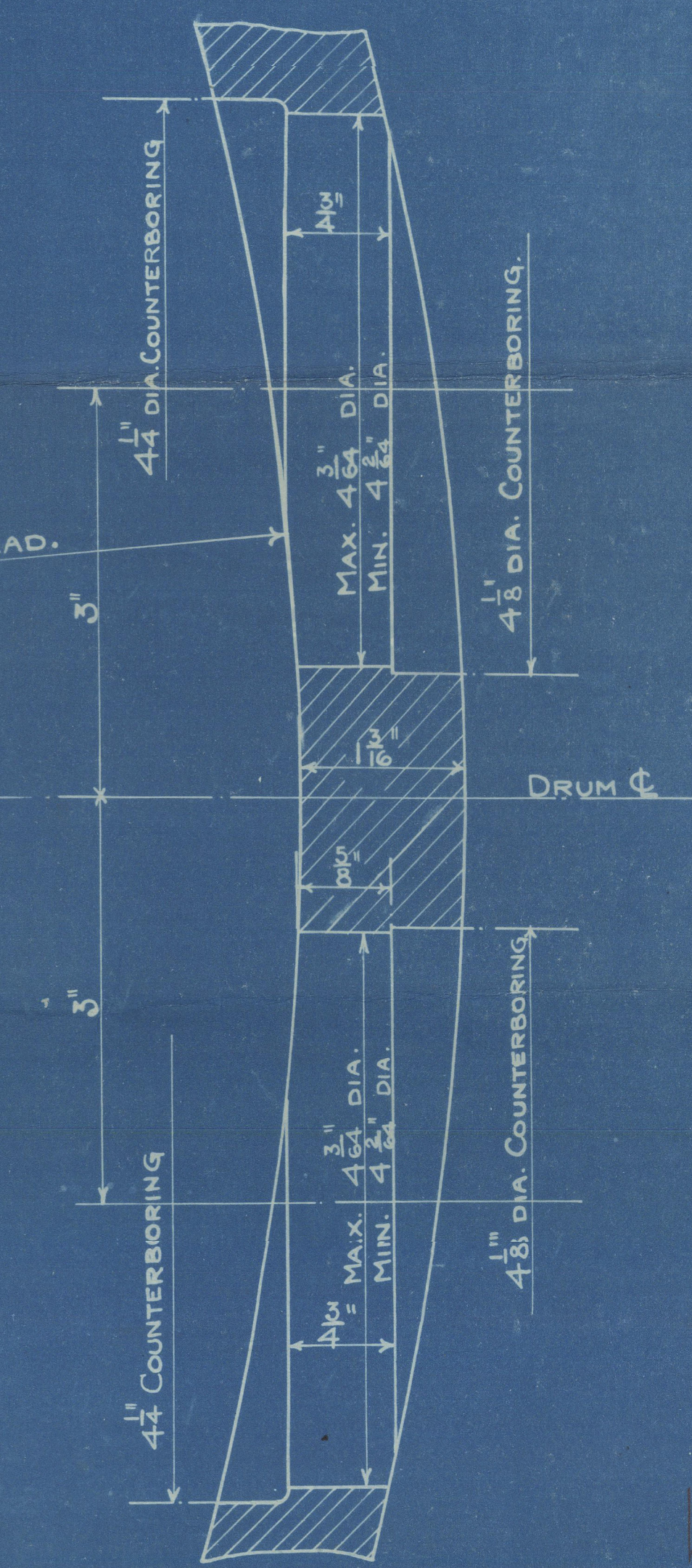
DETAIL OF COUNTERBORING "B"
SCALE - FULL SIZE.



DETAIL OF JOINTS.
HALF SIZE.



NOTE - FOR POSITION OF MANHOLE
SEE DRG. NO 5334/6



DETAIL OF COUNTERBORING "A"
SCALE - FULL SIZE.

LIST OF MATERIAL FOR 1 DRUM (2 DRUMS PER CONTRACT)	
1	SHELL PLATE 8' 9 3/4" x 5' 1 1/2" x 1 1/2" THICK
1	" 8' 9 3/4" x 6' 1 1/2" x 1 1/2" THICK
2	BUTT STRAPS (INNER) 7' 10 3/32" x 9 3/32" x 1 1/2"
2	" (OUTER) 7' 10 3/32" x 10 3/32" x 1 1/2"
2	DRUM ENDS 3' 6" DIA. MADE FROM PLATE 1 1/2"
1	MANDOOR & COMPENSATING RING 15" x 11"
ALL NECESSARY RIVETS. FINISHED SIZES GIVEN.	

	LONGIT. JOINT	CIRC. JOINT
PLATE	76.1 %	70.1 %
RIVET	83.6 %	55.70 %

LOAD ON BOILER SAFETY VALVE - 270 LBS. PER SQ. INCH
TEST PRESSURE - 455 LBS. " " "

EXPANDED VIEW OF DRUM SHELL.
SCALE - 1/2" = 1 FOOT.

NOTE - PLATES & BUTT STRAPS OF SIEMENS-MARTIN MILD STEEL
TENSILE STRENGTH OF SHELL PLATES & BUTT STRAPS - 28 - 32 TONS } TO LLOYD'S SURVEY.
" " " DRUM END PLATES - 26 - 30 "

STEAM & WATER DRUM.
SCALE - 1/2" = 1 FOOT.

THIS DESIGN IS THE PROPERTY
OF BABCOCK & WILCOX LIMITED
AND IS ONLY ALLOWED TO BE USED
BY EXPRESS PERMISSION AND
LICENSE FROM BABCOCK &
WILCOX LIMITED

BABCOCK & WILCOX LTD
MARINE DEPT
FARRINGTON ST LONDON E.C.4

2 BOILERS PER CONTRACT.

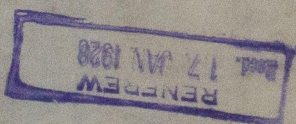
6/1231
DR NO 5334/4
DATE 7. 1. 28

Babcock & Wilcox Ltd.

Boiler No 6/1931.

W.P. 270 lbs.

Steam & Water Drums.



GLASGOW REPORT No 48549

W16-0064



© 2020

Lloyd's Register

Foundation