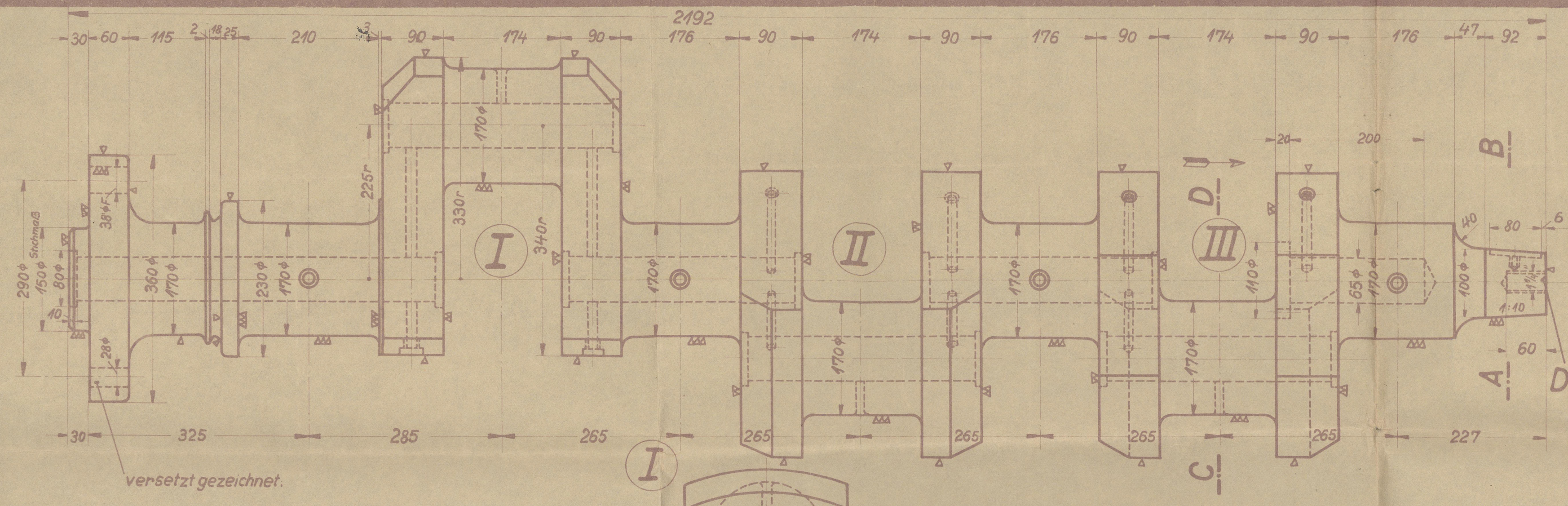


25/4/29



Schnitt: A÷B.

D-1194.

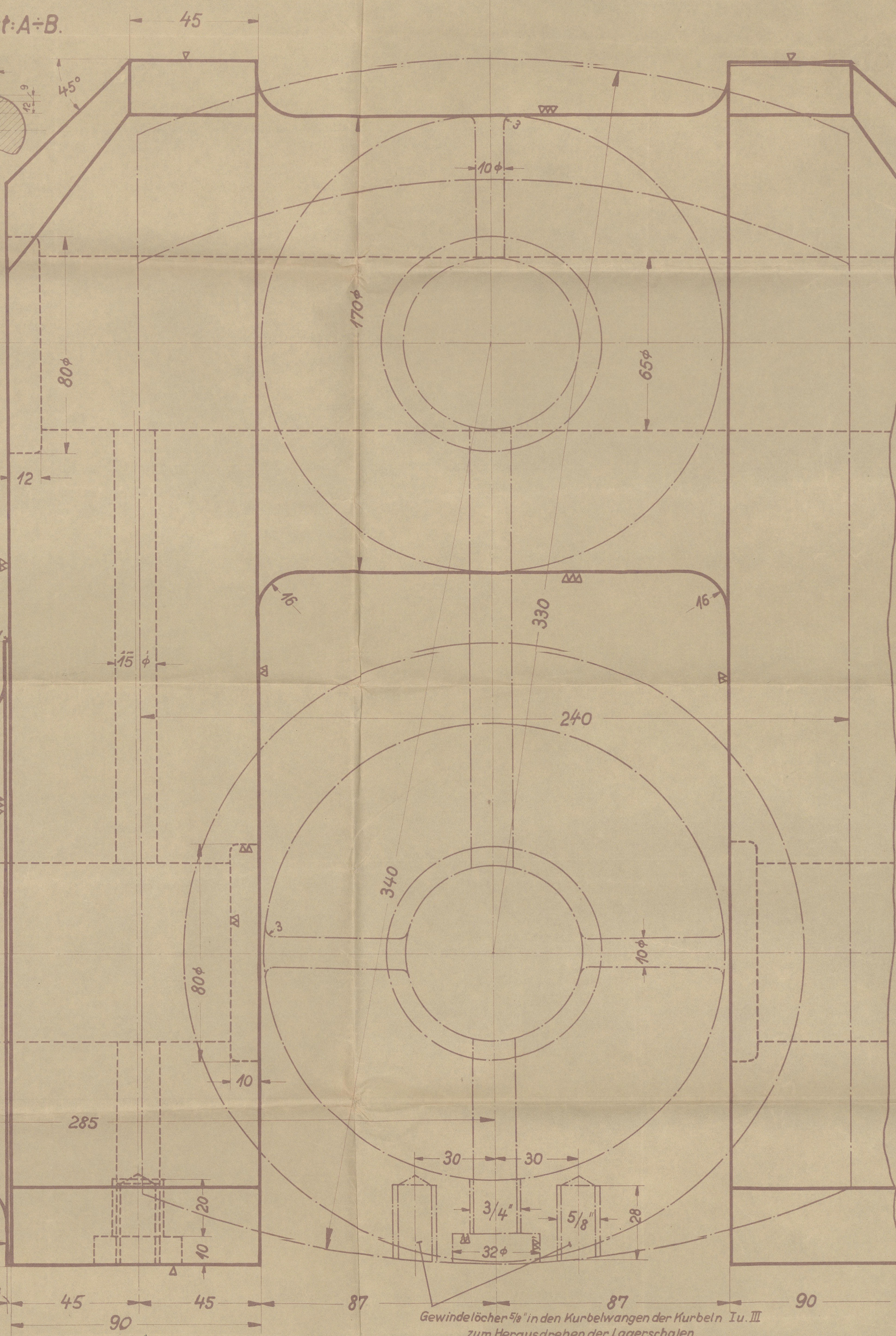
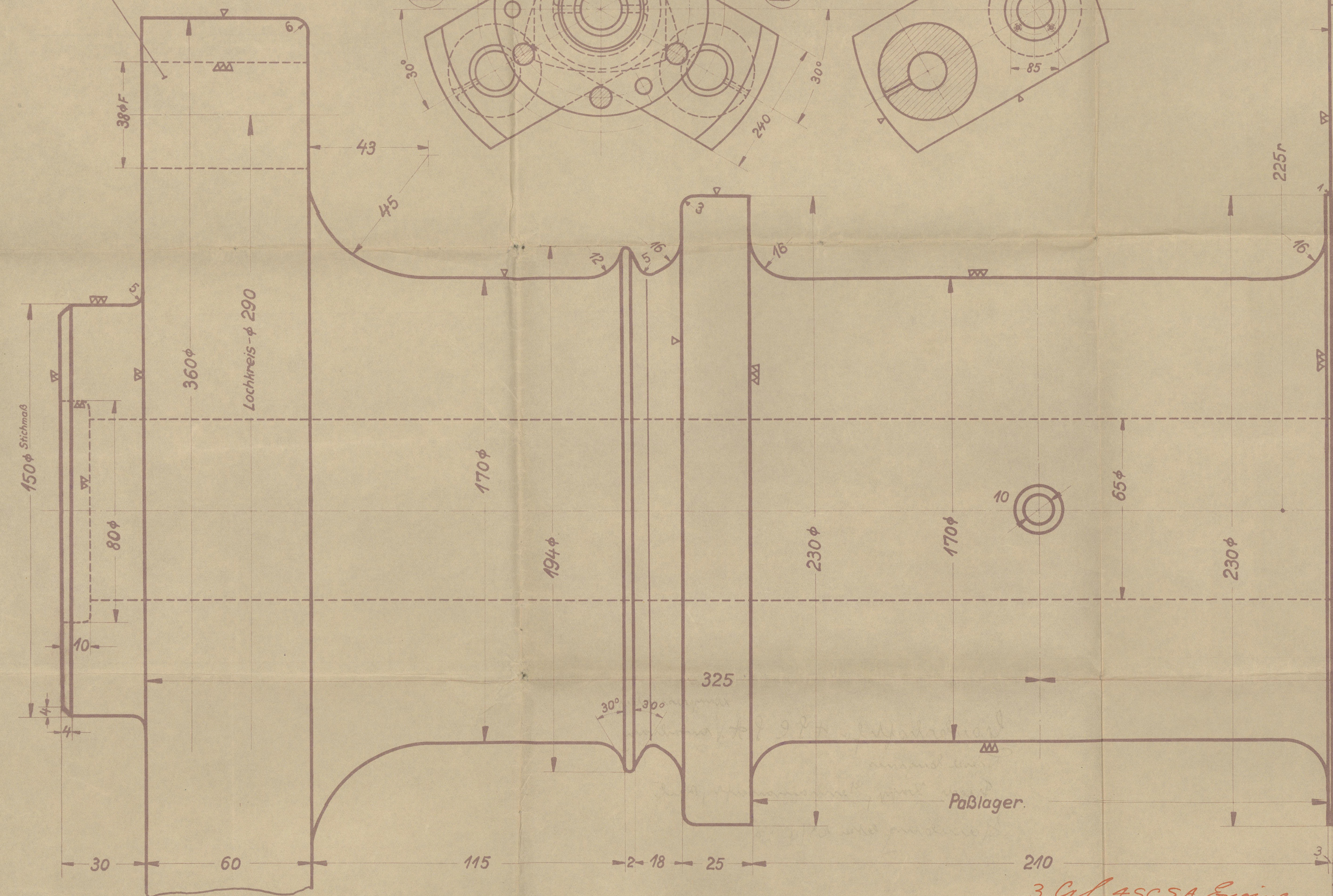
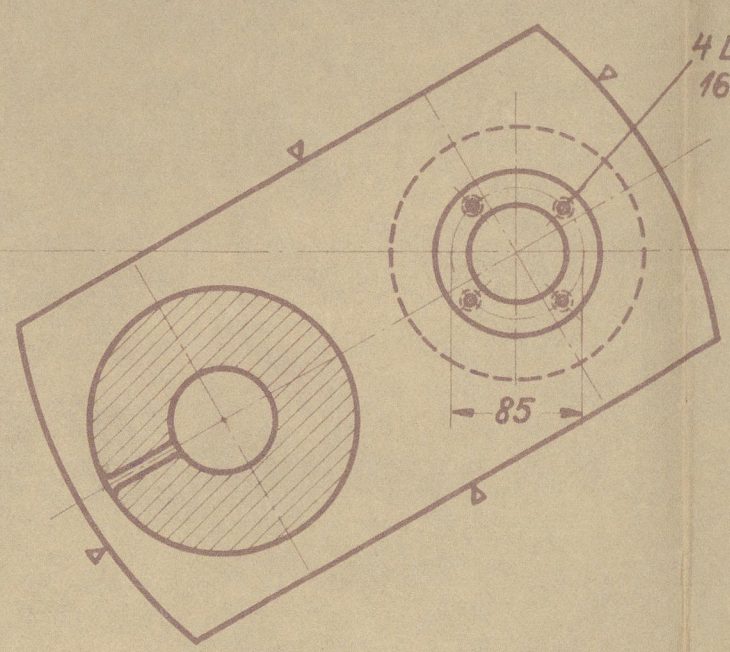
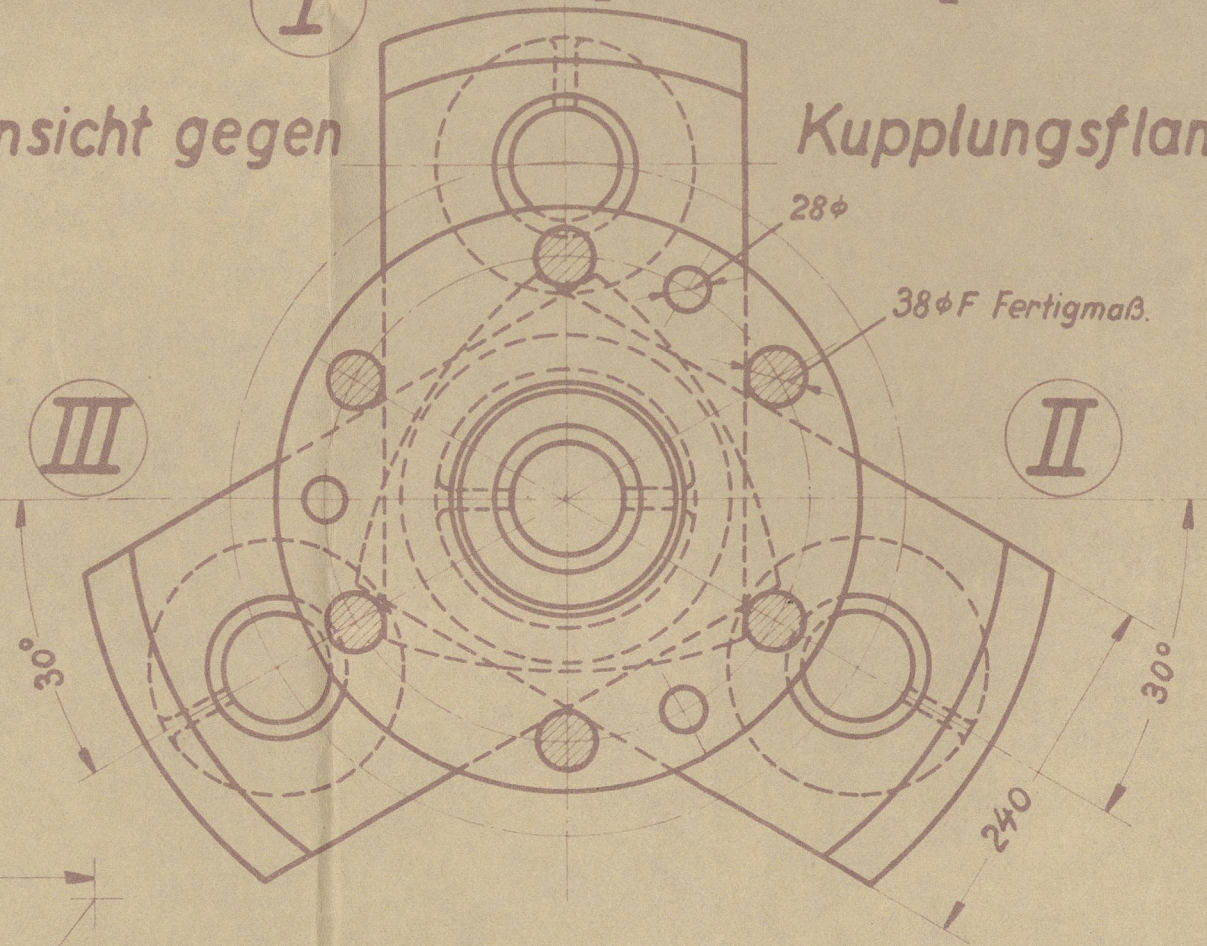
versetzt gezeichnet.


Ansicht gegen

Kupplungsflansch.

Schnitt: C÷D in Pfeilrichtung gesehen.

Bohrschablone: D-4100.



 Fried Krupp Germaniawerft A.G.	<b>Kurbelwelle.</b>		3 Cyl 4SCSA Engine 35 Kp max. Pressure 300 mm dia 450 mm stroke 300 R.P.M.		Modell-Nr	25/4/29	Type: 130/45ev	Gr-Z 3032 Lloyd's Register Foundation
	Werkstoff: So.St.	St Gew. in kg 680.	Name	Datum: 16.1.19	Mo 110004			

w/b-0961



compressors  
crankshaft for 4 P.C. P.H. Auxiliary  
Diesel engines

Friedr. Krupp, Germaniawerft, Kiel

Hamburg letter 23/4.29

2 Auxiliary D.E. Engines 131

Hamburg Report Nr.

18678

XIIIc - 0061



© 2020

Lloyd's Register  
Foundation