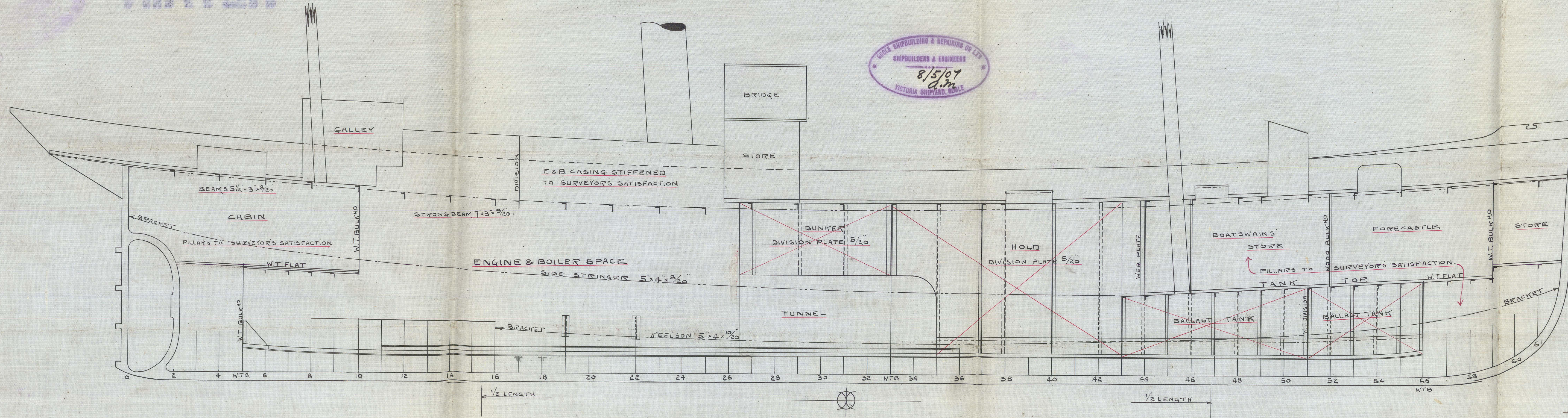
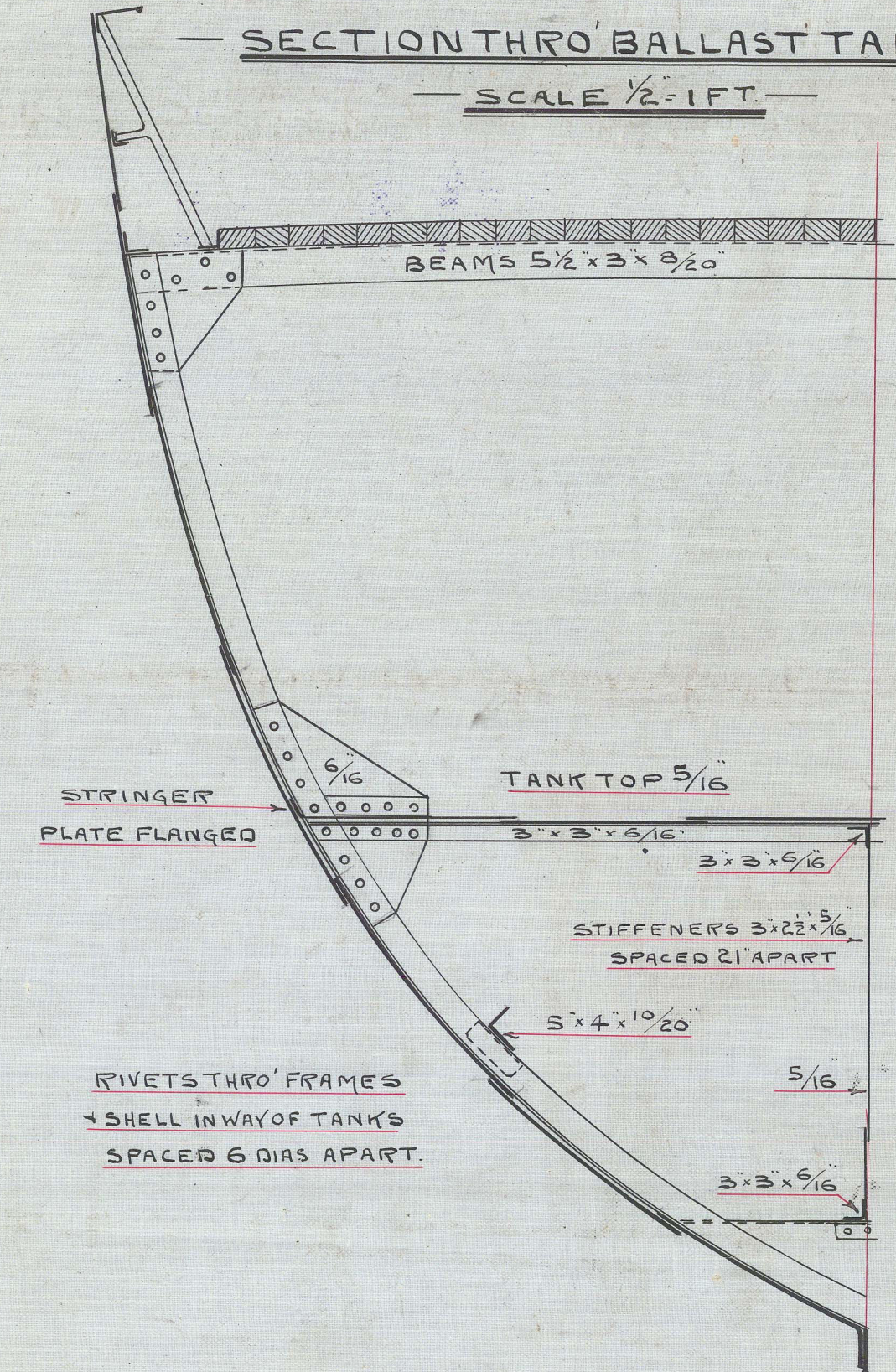


11.5.07.

— S.S. Nos 99 & 101 & 106 to 111. —
— ELEVATION. —
— DIMS: 110' 0" BP x 21' 6" x 12' 6" MLO. —
— SCALE 1/4" = 1 FOOT. —



— SECTION THRO' BALLAST TANK —
— SCALE 1/2" = 1 FT. —



C.B.
11.5.07.

ASW
9-5-07



Sp Tern

Hull Rpt No. 19510

Sp Redcap

Hull Rpt No. 19530

Sp Buzzard

Hull Rpt No. 19680

Sp Puffin

Hull Report No. 19726

Sp Willet

Hull Report No. 19775

Osprey S. & C.C.

Profile

No. 99.101, 106, 7.8, 9-10, 11

RETAIN

Sp Marshy
- Pintall
- Towhee

Hull Rpt No. 19967
- - 20,018
- - 20,180

W1596-0099



© 2021

Lloyd's Register
Foundation