

6.8.15

PROFILE

PRINCIPAL DIMENSIONS

LENGTH BP 305'0" BREADTH M^d 43'9" DEPTH M^d 27'3"

CLASS 100 A.I. LLOYDS

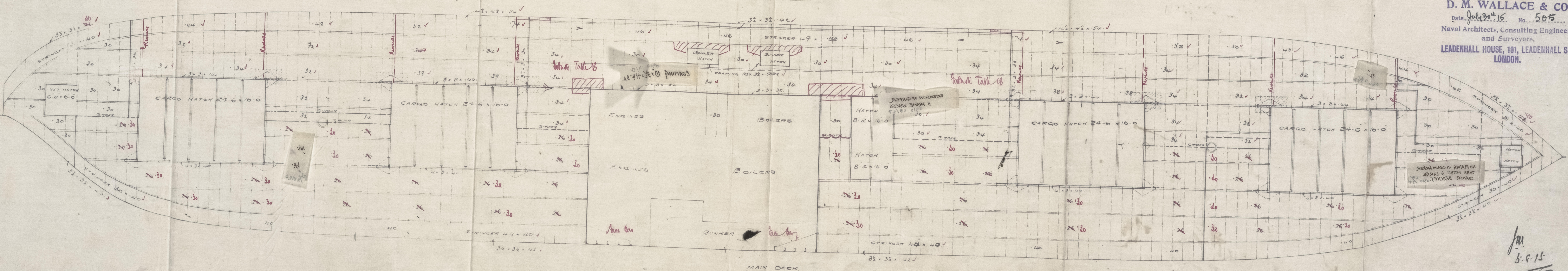
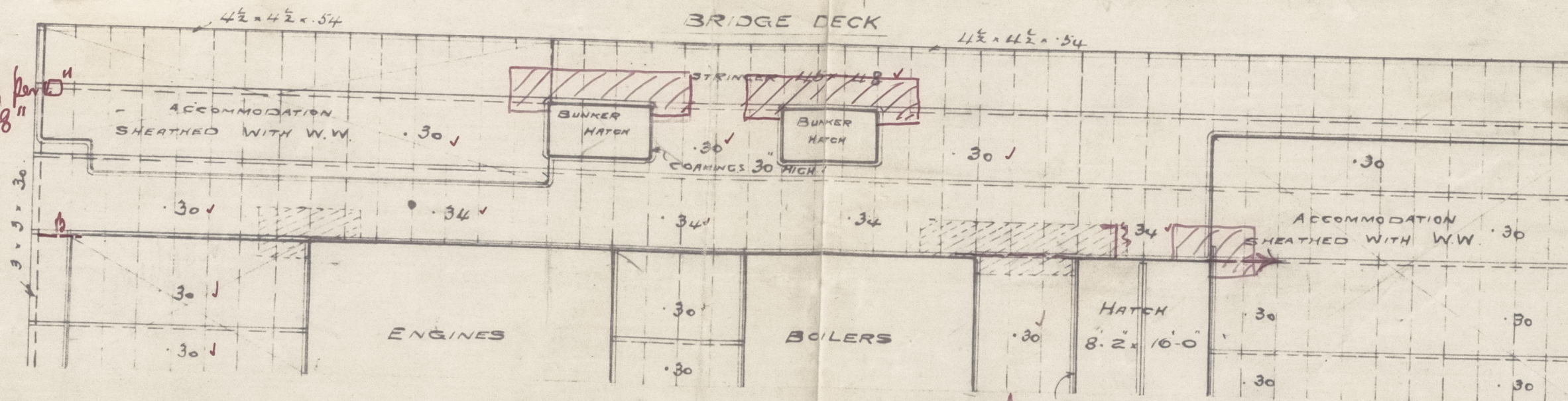
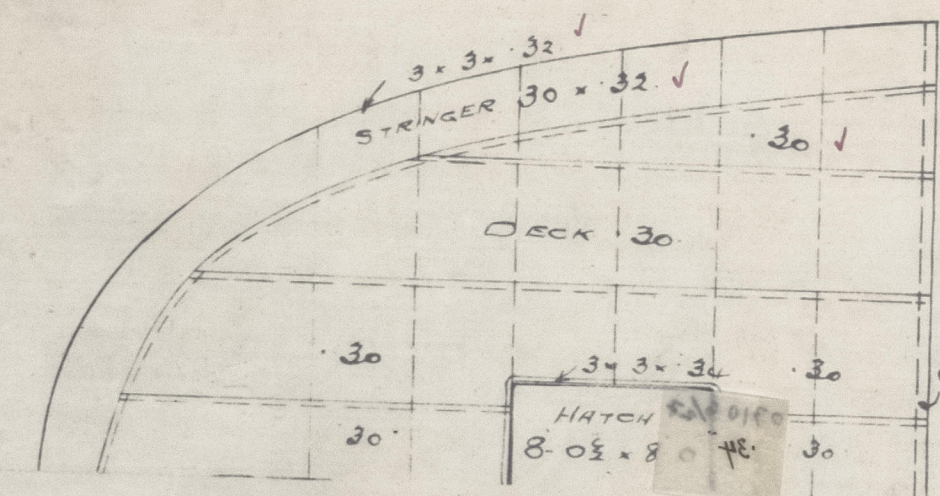
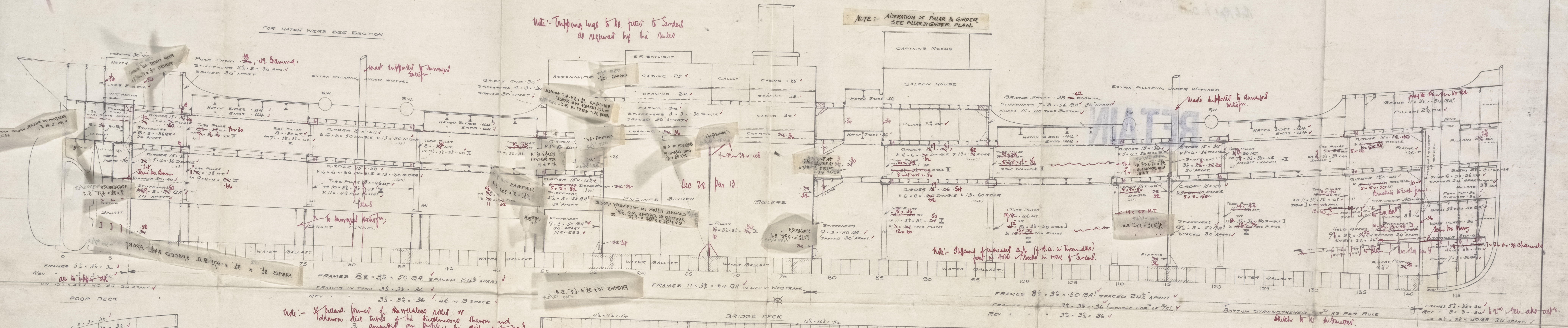
SCALE 1/8" = 1 FOOT

ALTERATION OF SIDE STRINGER
SEE STRINGER PLAN.

NOTE:- ALTERATION OF PLATE & GIRDER
SEE PLATE & GIRDER PLAN.

Note: Trimming was to be done to Sides
as required by the Rules.

FOR HATCH WEBS SEE SECTION



D. M. WALLACE & CO.
Naval Architects, Consulting Engineers,
and Surveyors,
LEADENHALL HOUSE, 101, LEADENHALL ST.,
LONDON.

6.8.15

6.8.15

PROFILE

PRINCIPAL DIMENSIONS

LENGTH BP 305.0 BREADTH M² 43.9 DEPTH M² 27.3

CLASS 100 A.I. LLOYDS

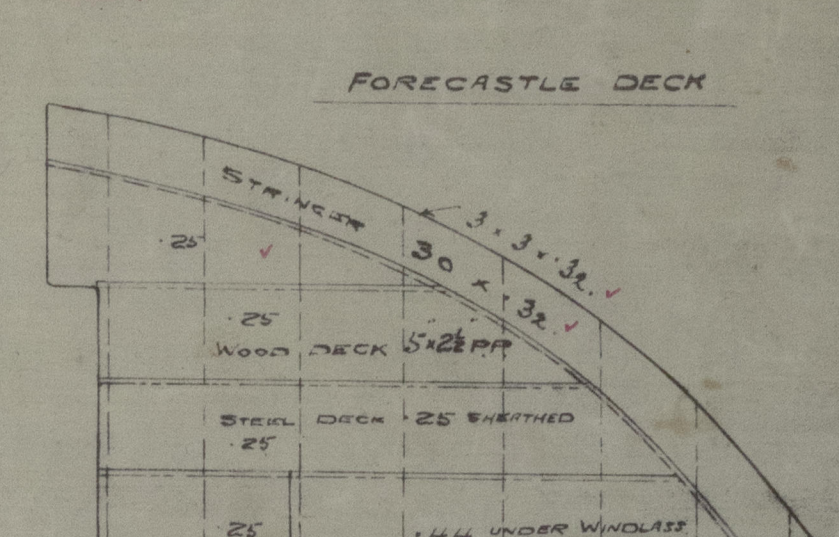
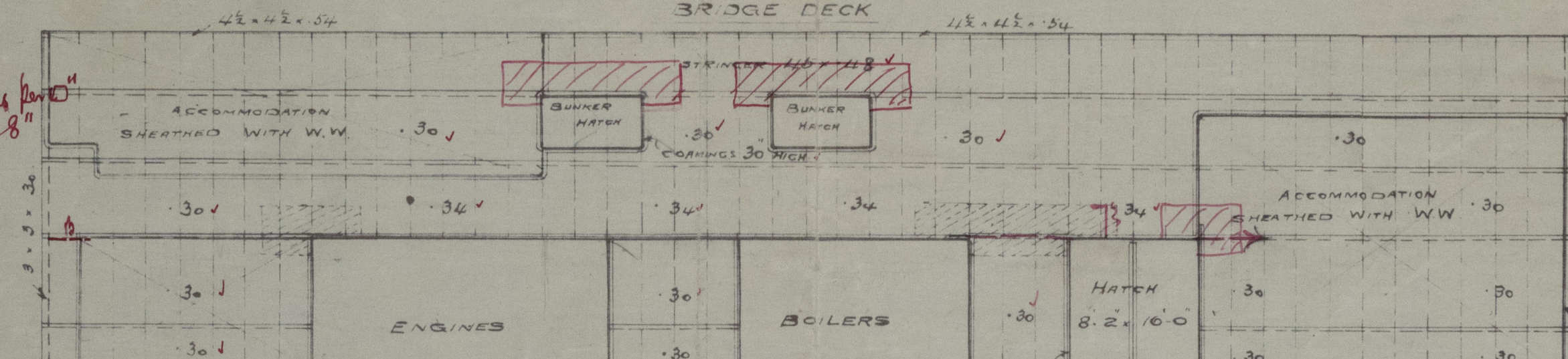
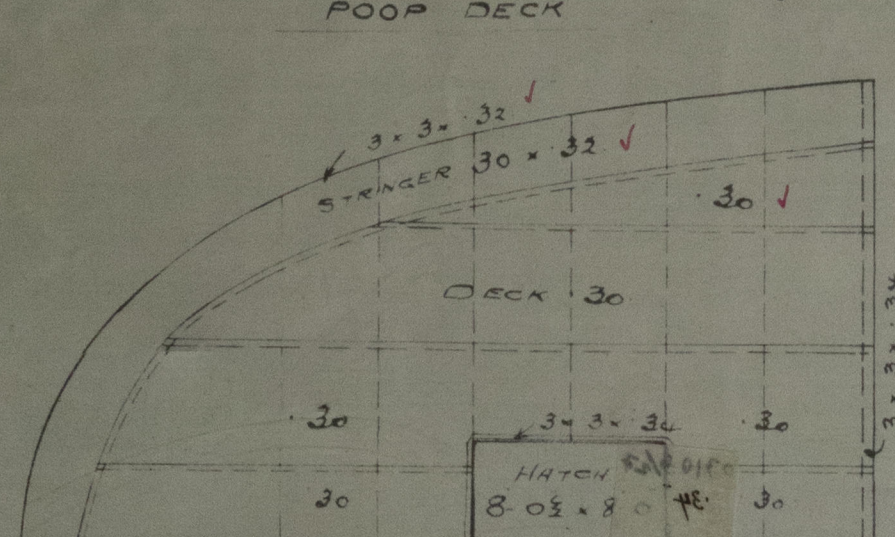
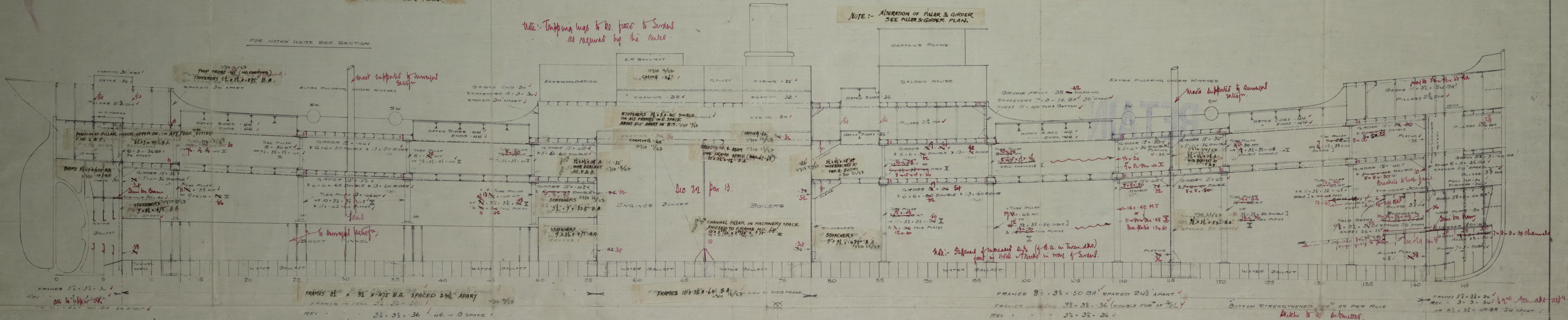
SCALE 1/8" = 1 FOOT

ALTERATION OF SIDE STRINGER
SEE STRINGER PLAN.

NOTE: ALTERATION OF PILLAR & GIRDER
SEE PILLAR & GIRDER PLAN.

Note: Trimming lugs to be fitted to Sordas
as required by the rules.

FOR HATCH WEBB SEE SECTION

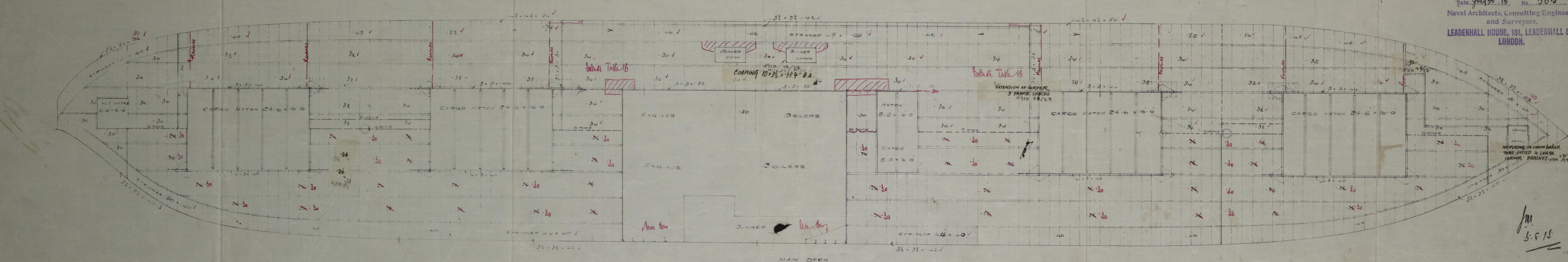


Note: If pillars formed of welded steel or
other material, the thicknesses shown and
arranged on profile, be such as to have
adequate strength of not less than 38 tons
and on elongation of not less than 10% and 8"

UPPER DECK

MAIN DECK

D. M. WALLACE & CO.
Date July 30th 15 No. 505
Naval Architects, Consulting Engineers,
and Surveyors,
LEADENHALL HOUSE, 101, LEADENHALL ST.,
LONDON.



5.6.15