

Equipment

1st No. 109.44 x 398.08 = 43685
 398.08 x 8 x 1.5 = 4774
 Houses 46 x 8 = 368
 Equipment No. 48830.

Enquiry No. 1615. S.S. No 786.
 Midship Section of Proposed Cargo Steamer.

Principal Dimensions
 Length overall 112'-0"
 Length between perps. 100'-0"
 Breadth extreme 52'-0"
 Depth moulded to Upper Deck 27'-9"

N:786

S.S. "SISAK"

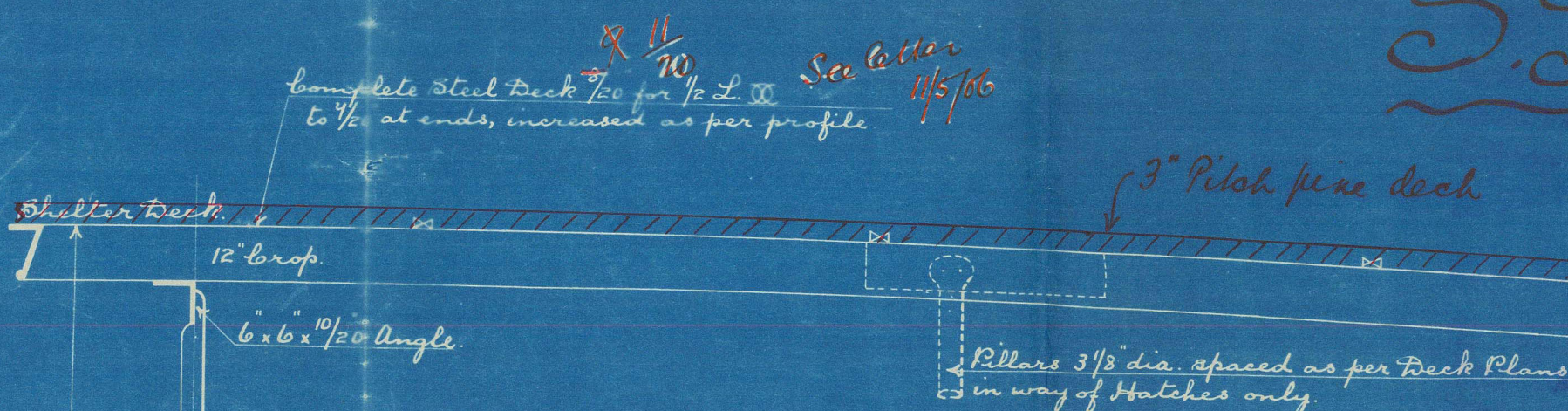
Lloyds Register

1/2 Breadth 25.84
 1/2 Depth 30.49
 1/2 Girth 53.88
 1st No. 109.44
 2nd No. 398.08
 408.98

N:796

Appd. 27/10/06

Class + 100 A.I. Lloyds 3 Deck with Shelter Deck.



Span	Length of Beam	Section	Plate	Rows of Rivets or
25	48'-9" to 32'-6"	10" x 10" x 1/2"	8" x 3" x 1/2" Bull Angle	24" x 24" x 1/2"
25	32'-6" to 24'-6"	7" x 7" x 1/2"	6 1/2" x 3" x 1/2"	18" x 18" x 1/2"
25	under 24'-6"	5" x 5" x 1/2"	6 1/2" x 3" x 1/2"	14" x 14" x 1/2"
25	Half Beams in way of	7" x 7" x 1/2"	6 1/2" x 3" x 1/2"	18" x 18" x 1/2"
25	of Hatches & Berings	7" x 7" x 1/2"	6 1/2" x 3" x 1/2"	18" x 18" x 1/2"
25	Half Beams in way of	7" x 7" x 1/2"	6 1/2" x 3" x 1/2"	18" x 18" x 1/2"
25	of Hatches & Berings	7" x 7" x 1/2"	6 1/2" x 3" x 1/2"	18" x 18" x 1/2"

Span	Length of Beam	Section	Plate	Rows of Rivets or
25	50'-3" to 33'-6"	13" x 13" x 1/2"	10" x 3 1/2" x 3/4" Channel	31 1/2" x 31 1/2" x 1/2"
25	33'-6" to 25'-11 1/2"	11" x 11" x 1/2"	8" x 3 1/2" x 3/4" Channel	23" x 23" x 1/2"
25	under 25'-11 1/2"	10" x 10" x 1/2"	8" x 3" x 1/2" Bull Angle	18 1/2" x 18 1/2" x 1/2"
25	Half Beams in way of	11" x 11" x 1/2"	8" x 3 1/2" x 3/4" Channel	23" x 23" x 1/2"
25	of Hatches & Berings	11" x 11" x 1/2"	8" x 3 1/2" x 3/4" Channel	23" x 23" x 1/2"
25	Half Beams in way of	11" x 11" x 1/2"	8" x 3 1/2" x 3/4" Channel	23" x 23" x 1/2"
25	of Hatches & Berings	11" x 11" x 1/2"	8" x 3 1/2" x 3/4" Channel	23" x 23" x 1/2"

Span	Length of Beam	Section	Plate	Rows of Rivets or
25	51'-5" to 34'-3 1/2"	13" x 13" x 1/2"	10" x 3 1/2" x 3/4" Channel	31 1/2" x 31 1/2" x 1/2"
25	34'-3 1/2" to 25'-8 1/2"	11" x 11" x 1/2"	8" x 3 1/2" x 3/4" Channel	24" x 24" x 1/2"
25	under 25'-8 1/2"	10" x 10" x 1/2"	8" x 3" x 1/2" Bull Angle	18 1/2" x 18 1/2" x 1/2"
25	Half Beams in way of	11" x 11" x 1/2"	8" x 3 1/2" x 3/4" Channel	24" x 24" x 1/2"
25	of Hatches & Berings	11" x 11" x 1/2"	8" x 3 1/2" x 3/4" Channel	24" x 24" x 1/2"
25	Half Beams in way of	11" x 11" x 1/2"	8" x 3 1/2" x 3/4" Channel	24" x 24" x 1/2"
25	of Hatches & Berings	11" x 11" x 1/2"	8" x 3 1/2" x 3/4" Channel	24" x 24" x 1/2"

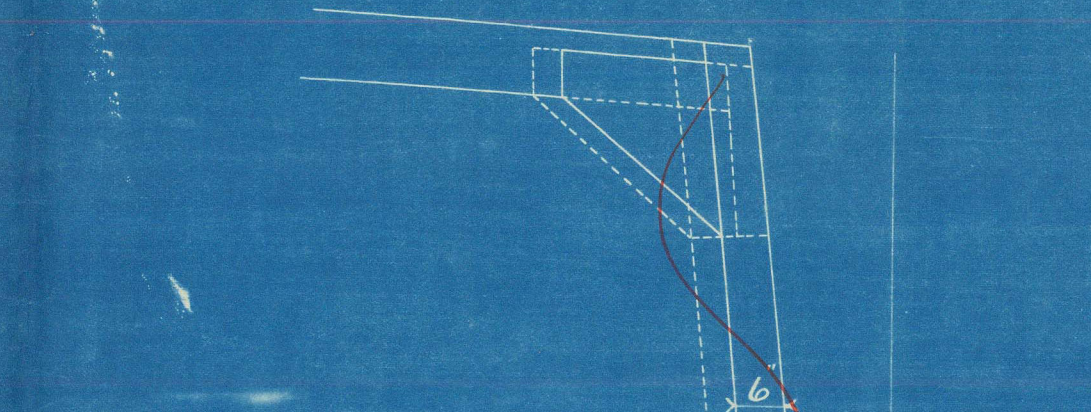
Span	Length of Beam	Section	Plate	Rows of Rivets or
25	51'-5" to 34'-3 1/2"	13" x 13" x 1/2"	10" x 3 1/2" x 3/4" Channel	31 1/2" x 31 1/2" x 1/2"
25	34'-3 1/2" to 25'-8 1/2"	11" x 11" x 1/2"	8" x 3 1/2" x 3/4" Channel	24" x 24" x 1/2"
25	under 25'-8 1/2"	10" x 10" x 1/2"	8" x 3" x 1/2" Bull Angle	18 1/2" x 18 1/2" x 1/2"
25	Half Beams in way of	11" x 11" x 1/2"	8" x 3 1/2" x 3/4" Channel	24" x 24" x 1/2"
25	of Hatches & Berings	11" x 11" x 1/2"	8" x 3 1/2" x 3/4" Channel	24" x 24" x 1/2"
25	Half Beams in way of	11" x 11" x 1/2"	8" x 3 1/2" x 3/4" Channel	24" x 24" x 1/2"
25	of Hatches & Berings	11" x 11" x 1/2"	8" x 3 1/2" x 3/4" Channel	24" x 24" x 1/2"

Span	Length of Beam	Section	Plate	Rows of Rivets or
25	51'-5" to 34'-3 1/2"	13" x 13" x 1/2"	10" x 3 1/2" x 3/4" Channel	31 1/2" x 31 1/2" x 1/2"
25	34'-3 1/2" to 25'-8 1/2"	11" x 11" x 1/2"	8" x 3 1/2" x 3/4" Channel	24" x 24" x 1/2"
25	under 25'-8 1/2"	10" x 10" x 1/2"	8" x 3" x 1/2" Bull Angle	18 1/2" x 18 1/2" x 1/2"
25	Half Beams in way of	11" x 11" x 1/2"	8" x 3 1/2" x 3/4" Channel	24" x 24" x 1/2"
25	of Hatches & Berings	11" x 11" x 1/2"	8" x 3 1/2" x 3/4" Channel	24" x 24" x 1/2"
25	Half Beams in way of	11" x 11" x 1/2"	8" x 3 1/2" x 3/4" Channel	24" x 24" x 1/2"
25	of Hatches & Berings	11" x 11" x 1/2"	8" x 3 1/2" x 3/4" Channel	24" x 24" x 1/2"

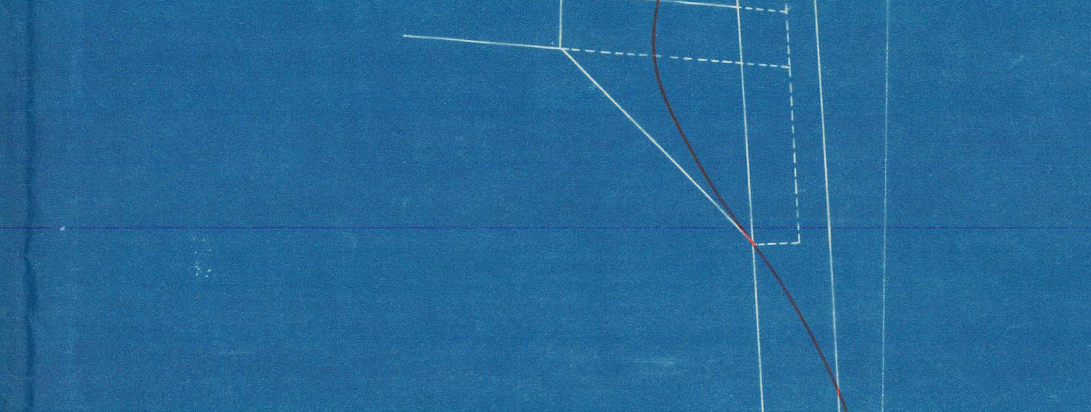
Span	Length of Beam	Section	Plate	Rows of Rivets or
25	51'-5" to 34'-3 1/2"	13" x 13" x 1/2"	10" x 3 1/2" x 3/4" Channel	31 1/2" x 31 1/2" x 1/2"
25	34'-3 1/2" to 25'-8 1/2"	11" x 11" x 1/2"	8" x 3 1/2" x 3/4" Channel	24" x 24" x 1/2"
25	under 25'-8 1/2"	10" x 10" x 1/2"	8" x 3" x 1/2" Bull Angle	18 1/2" x 18 1/2" x 1/2"
25	Half Beams in way of	11" x 11" x 1/2"	8" x 3 1/2" x 3/4" Channel	24" x 24" x 1/2"
25	of Hatches & Berings	11" x 11" x 1/2"	8" x 3 1/2" x 3/4" Channel	24" x 24" x 1/2"
25	Half Beams in way of	11" x 11" x 1/2"	8" x 3 1/2" x 3/4" Channel	24" x 24" x 1/2"
25	of Hatches & Berings	11" x 11" x 1/2"	8" x 3 1/2" x 3/4" Channel	24" x 24" x 1/2"

Span	Length of Beam	Section	Plate	Rows of Rivets or
25	51'-5" to 34'-3 1/2"	13" x 13" x 1/2"	10" x 3 1/2" x 3/4" Channel	31 1/2" x 31 1/2" x 1/2"
25	34'-3 1/2" to 25'-8 1/2"	11" x 11" x 1/2"	8" x 3 1/2" x 3/4" Channel	24" x 24" x 1/2"
25	under 25'-8 1/2"	10" x 10" x 1/2"	8" x 3" x 1/2" Bull Angle	18 1/2" x 18 1/2" x 1/2"
25	Half Beams in way of	11" x 11" x 1/2"	8" x 3 1/2" x 3/4" Channel	24" x 24" x 1/2"
25	of Hatches & Berings	11" x 11" x 1/2"	8" x 3 1/2" x 3/4" Channel	24" x 24" x 1/2"
25	Half Beams in way of	11" x 11" x 1/2"	8" x 3 1/2" x 3/4" Channel	24" x 24" x 1/2"
25	of Hatches & Berings	11" x 11" x 1/2"	8" x 3 1/2" x 3/4" Channel	24" x 24" x 1/2"

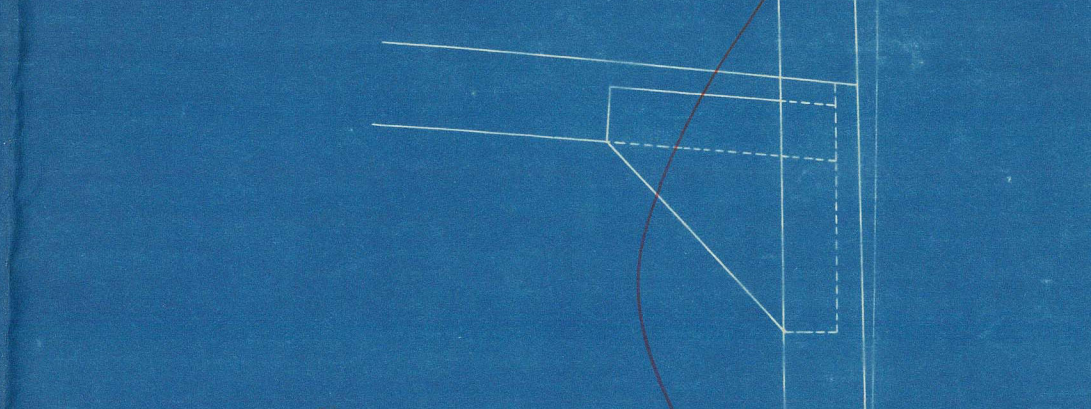
Sketch of Alternative Side Frame
 NOT ADOPTED



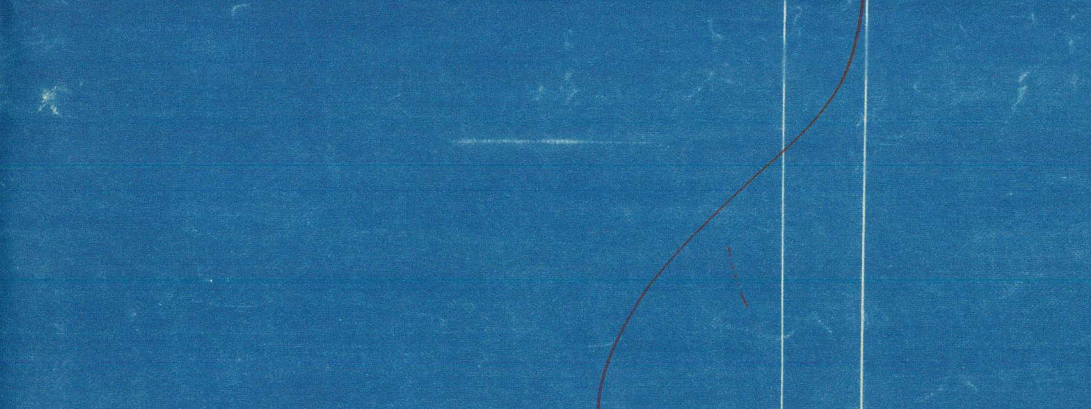
Alternate Channels in Shelter Deck cut down to size of ordinary frame.



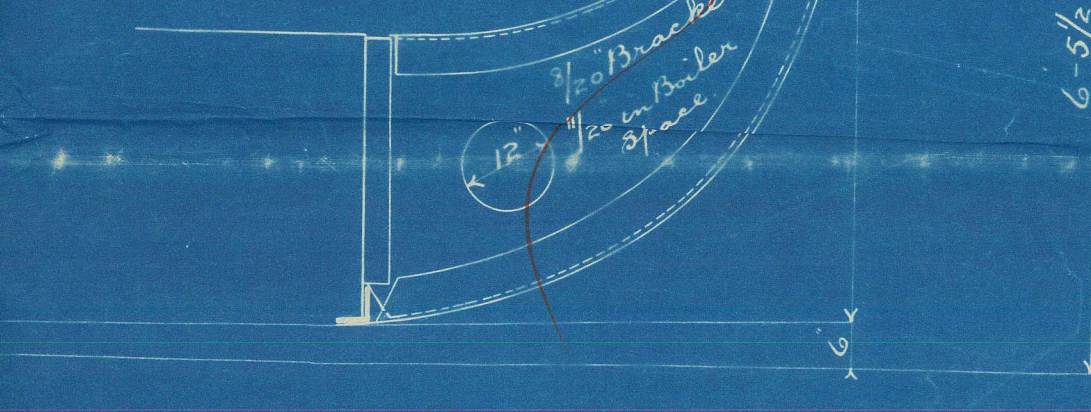
Channel Bar split and upper half carried around brackets to form reverse bar.



Channel Bar split and upper half carried around brackets to form reverse bar.



Channel Bar split and upper half carried around brackets to form reverse bar.



Channel Bar split and upper half carried around brackets to form reverse bar.

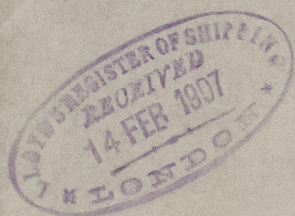
SIR W. G. ARMSTRONG, WHITWORTH & CO. LIMITED
 NEWCASTLE-UPON-TYNE.
 No. 8078 DATE 7/2/04.
 WALKER SHIPYARD.

SIR W. G. ARMSTRONG, WHITWORTH & CO. LIMITED
 WALKER SHIPYARD,
 NEWCASTLE-UPON-TYNE.
 ENQUIRY No. 1615/02 DATE 27/4/06.

Newcastle on Tyne
Sir W. G. Armstrong Whitworth^{H. La}
N^o 486
S. S. "Sisak"

Y^e be retained in London office
with 1st entry report:

M. S.



RETAIN



© 2020

Lloyd's Register
Foundation

W1587-0191