

I. STEEL BOILER No A.108.

WORKING PRESSURE = 180 LBS. LLG 102.

TEST PRESSURE = 360 LBS.

SCALE 1 INCH = 1 FOOT.

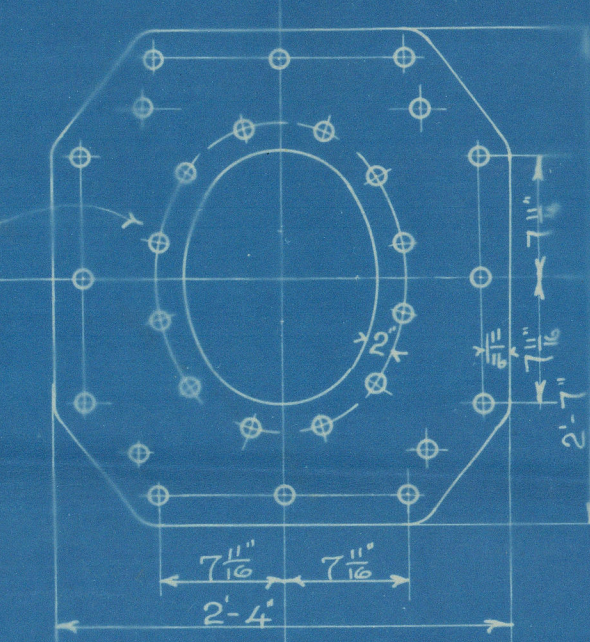
PLAN OF SHELL RIVETING

1 1/2" HOLES 7 1/16" PITCH

PERCENTAGE OF PLATE 85.3, PERCENTAGE RIVETS 85.4.

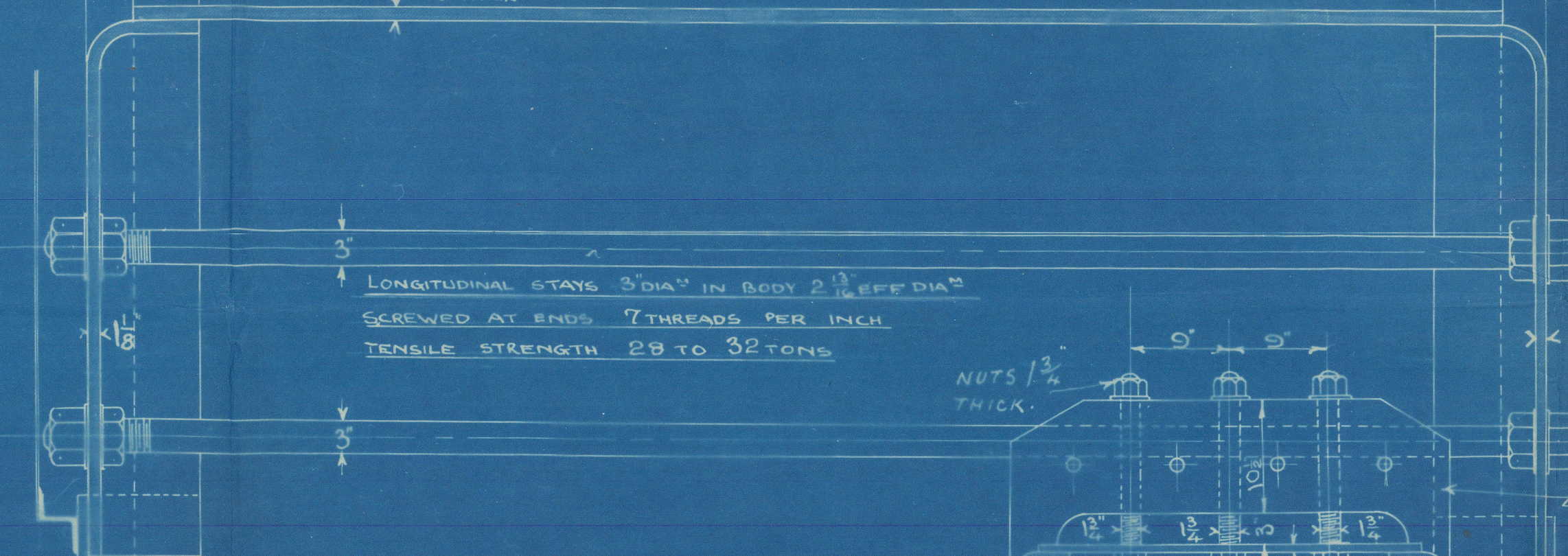
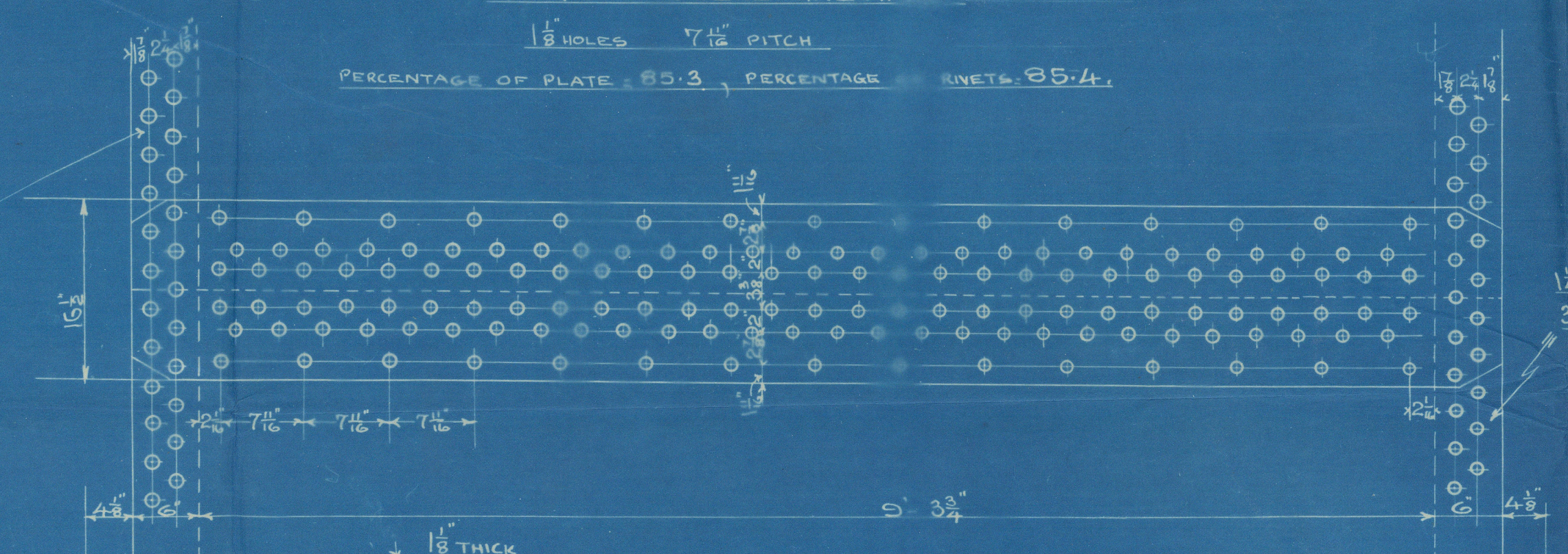
NOTE. ALL PLATES STAYS AND RIVETS TO BE OF SIEMENS MARTIN STEEL.
THE SHELL PLATES AND BUTT STRAPS TO BE OF NOT LESS THAN 28 TONS TENSILE STRENGTH. ALL RIVET HOLES THROUGHOUT THE BOILER TO BE DRILLED IN PLACE AFTER THE PLATES ARE BENT. ALL FLANGED PLATES TO BE ANNEALED AFTER FLANGING. THE SCREW STAYS ARE 1 3/4", 1 5/8" & 1 1/2" EFFECTIVE DIA" SCREWED INTO BOTH PLATES AND NUTTED AT EACH END. ALL SCREWED 10 THREADS PER INCH.
THE TUBES ARE OF IRON. THE ORDINARY TUBES ARE 3 1/2" EXT DIA" & NO 8 L.S.G. THICK. THE STAY TUBES ARE 2 3/4" INT DIA" & 1/4" THICK EFF. 5" THICK IN BODY SCREWED AT ENDS TO 3 1/2" AND 3 3/4" DIA" 10 THREADS PER INCH. A MANHOLE IN SHELL 16" X 12" WITH SHORTER AXIS LONGITUDINALLY AND A DOUBLING PLATE 2'-4" X 2'-7" X 1/8" THICK FITTED ROUND IT.

ALL 1 1/2" HOLES INNER ROW COUNTERSUNK

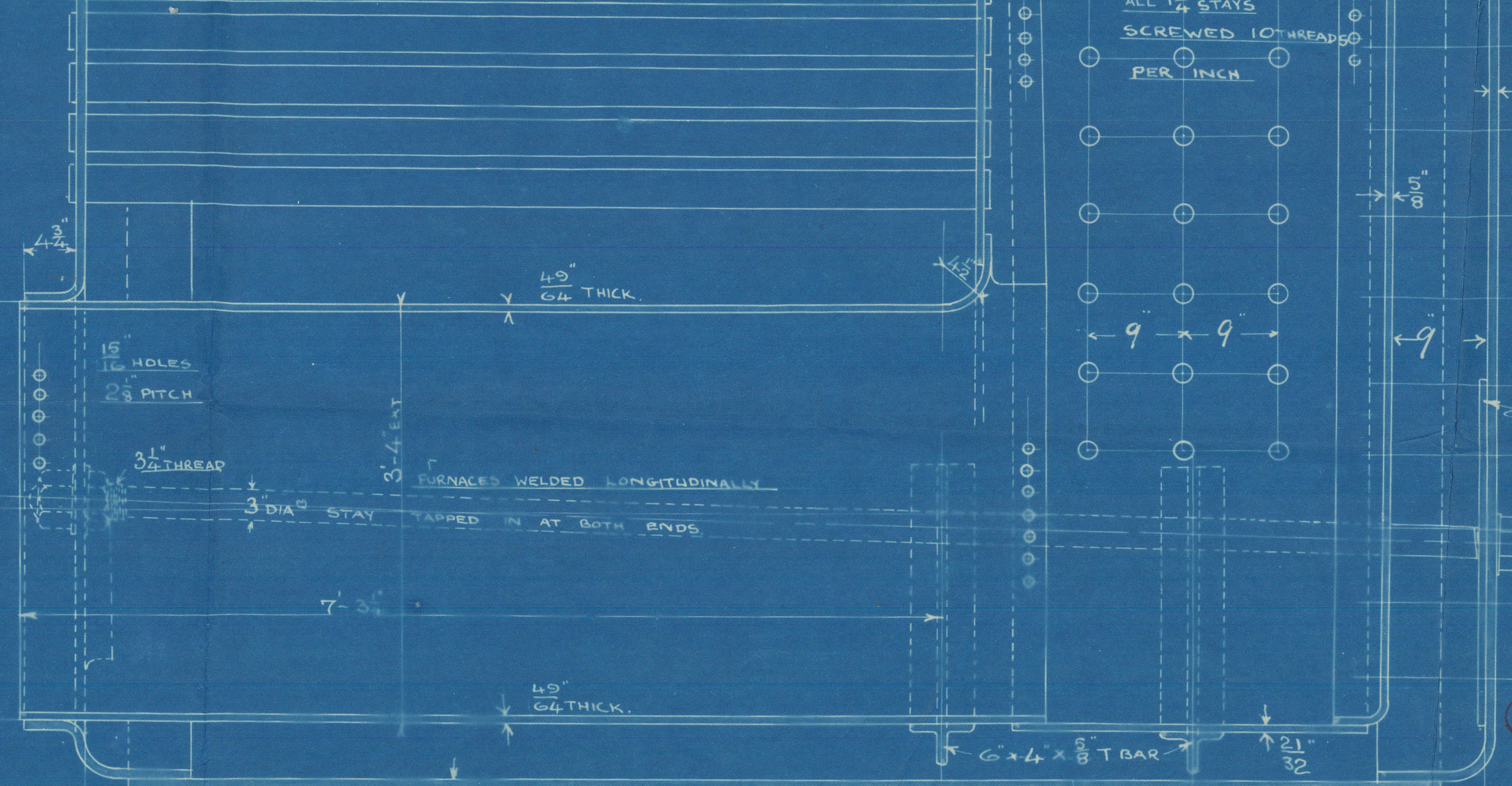


DOUBLING PLATE ROUND MANHOLE 1/8" THICK

INS SHELL PLATE 1/8" THICK
INSIDE BUTT STRAP 1/8" THICK
OUTSIDE BUTT STRAP 3/8" THICK
ALL 28 TO 32 TONS TENSILE STRENGTH



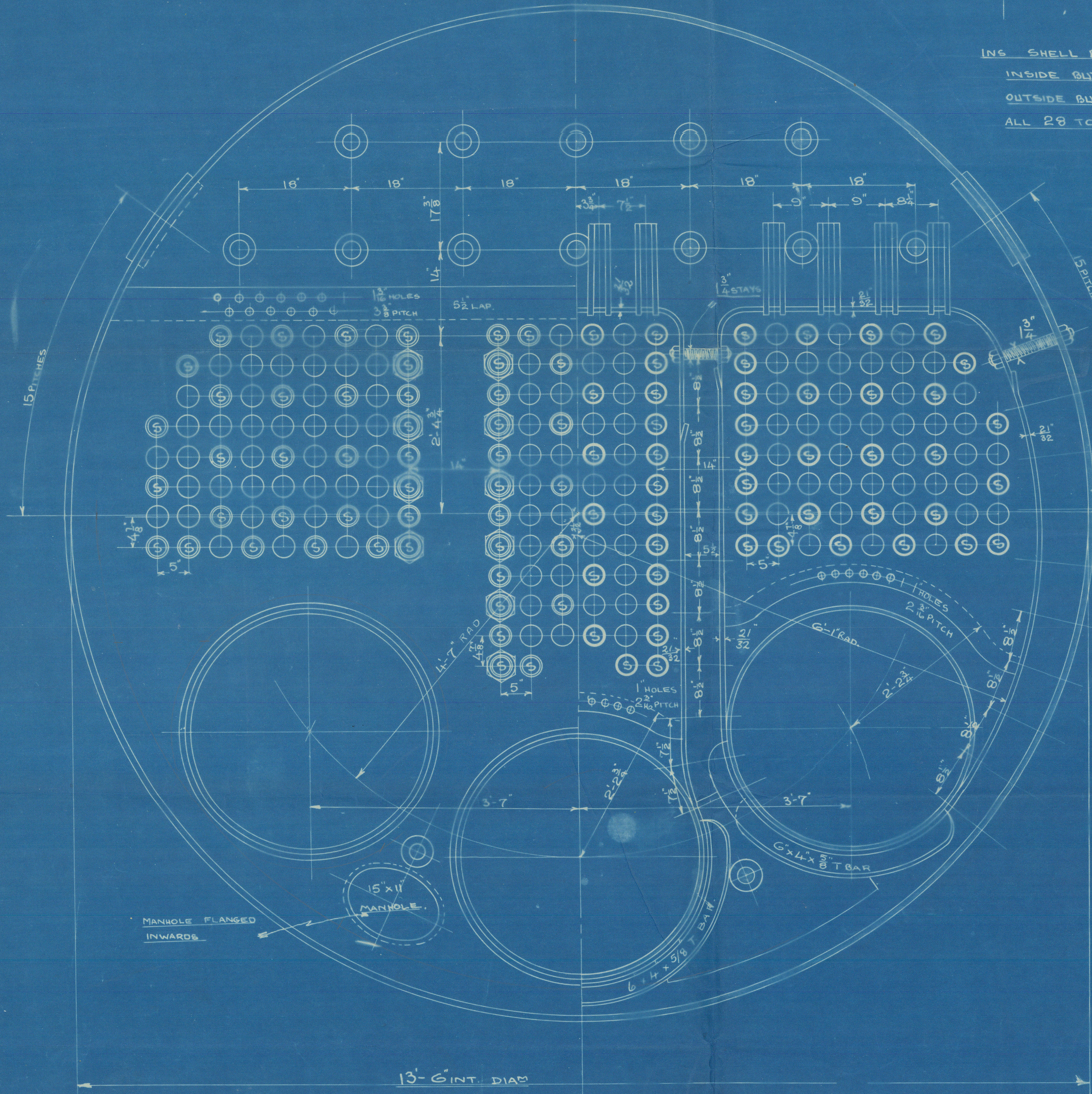
LONGITUDINAL STAYS 3" DIA" IN BODY 2 1/2" EFF DIA" SCREWED AT ENDS 7 THREADS PER INCH TENSILE STRENGTH 28 TO 32 TONS
7'-0" BUT PLATES
IRON ORDINARY TUBES 3 1/2" EXT DIA" X NO 8 L.S.G. THICK
SWELLED 1 1/2" AT FRONT END
IRON STAY TUBES 2 3/4" EXT DIA" X 1/4" THICK IN BODY 1/4" THICK EFFECTIVE
SCREWED AT ENDS TO 3 1/2" & 3 3/4" DIA" 10 THREADS PER INCH
NUTS FITTED ON STAY TUBES AT FRONT END WHERE SHOWN.



11'-0" MEAN LENGTH

DIMENSIONS

LENGTH OF FIRE BARS	4'-6"
AREA OF FIRE GRATE	43.2 sq
DIAM OF TUBES OUTSIDE	3 1/2"
LENGTH OF TUBES BET PLATES	7'-0"
Nº OF TUBES	206
AREA THROUGH TUBES	10 sq
SURFACE OF TUBES	1320 sq
TOTAL HEATING SURFACE	1600 sq
WORKING PRESSURE	180 LBS



No A108

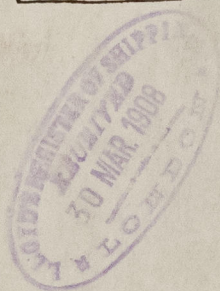


Lloyd's Register Foundation

Boulet A 108.

Messrs Earles & Co
of Osprey II
Hull Report No 20,503

No 1660
Lloyds List
360 lbs
30.7.08
J.B



RETAIN



© 2021

Lloyd's Register
Foundation

W1583-0144