

NOA 111

WORKING PRESSURE = 180 LBS. LLOYD'S

TEST PRESSURE = 360 LBS

SCALE 1 INCH = 1 FOOT.

PLAN OF SHELL RIVETING

1 1/8" HOLES 7 11/16" PITCH

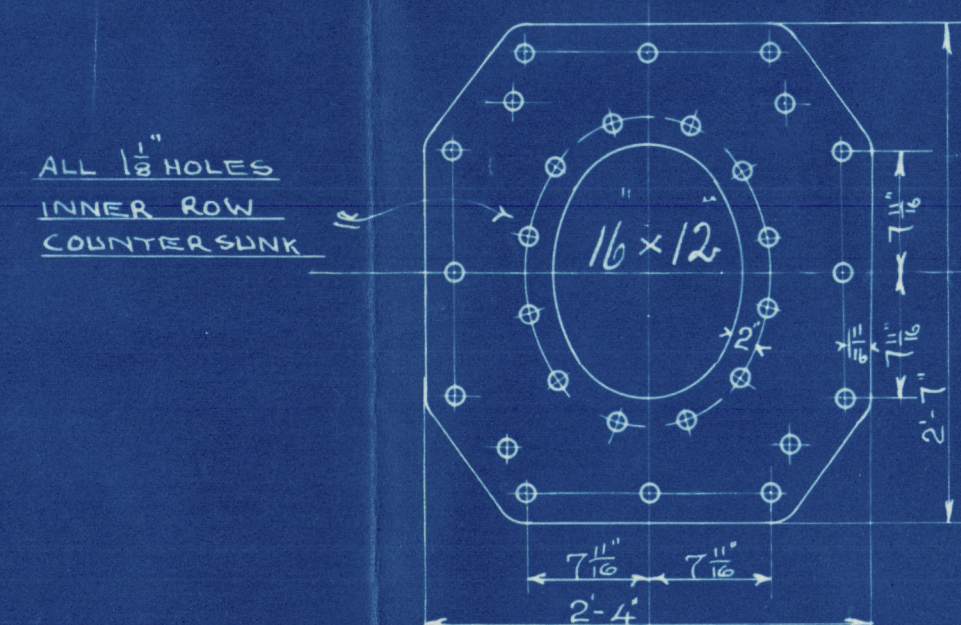
PERCENTAGE OF PLATE: 85.3, PERCENTAGE OF RIVETS: 85.4.

DIMENSIONS

LENGTH OF FIRE BARS	4'-6"
AREA OF FIRE GRATE	43.2 sq
DIAM. OF TUBES OUTSIDE	3 1/2"
LENGTH OF TUBES	7'-0"
NO. OF TUBES	206
AREA THROUGH TUBES	10 sq
SURFACE OF TUBES	1320 sq
TOTAL HEATING SURFACE	1600 sq
WORKING PRESSURE	180 LBS

NOTE. ALL PLATES STAYS AND RIVETS TO BE OF SIEMENS MARTIN STEEL
THE SHELL PLATES AND BUTT STRAPS TO BE OF NOT LESS THAN
28 TONS TENSILE STRENGTH. ALL RIVET HOLES THROUGHOUT THE BOILER TO
BE DRILLED IN PLACE AFTER THE PLATES ARE BENT ALL FLANGED PLATES
TO BE ANNEALED AFTER PLACING THE SCREW STAYS AT $1\frac{1}{2}$, $1\frac{3}{4}$ & 2
EFFECTIVE DIAS SCREWED INTO BOTH PLATES AND NUTTED AT EACH END.
ALL SCREWED 10 THREADS PER INCH.

THE TUBES ARE OF IRON. THE ORDINARY TUBES ARE $3\frac{1}{2}$ " EXT DIA" & NO 8 LSG. THICK THE STAY TUBES ARE $2\frac{1}{2}$ " INT DIA" X $\frac{1}{4}$ " THICK EFF. $\frac{5}{16}$ " THICK IN BODY SCREWED AT ENDS TO $3\frac{1}{2}$ " AND $3\frac{3}{4}$ " DIA" 10 THREADS PER INCH. A MANHOLE IN SHELL $16\frac{1}{2} \times 12$ " WITH SHORTER AXIS LONGITUDINALLY AND A DOUBLING PLATE $2'-4" \times 2'-7" \times \frac{1}{8}$ " THICK FITTED ROUND IT.



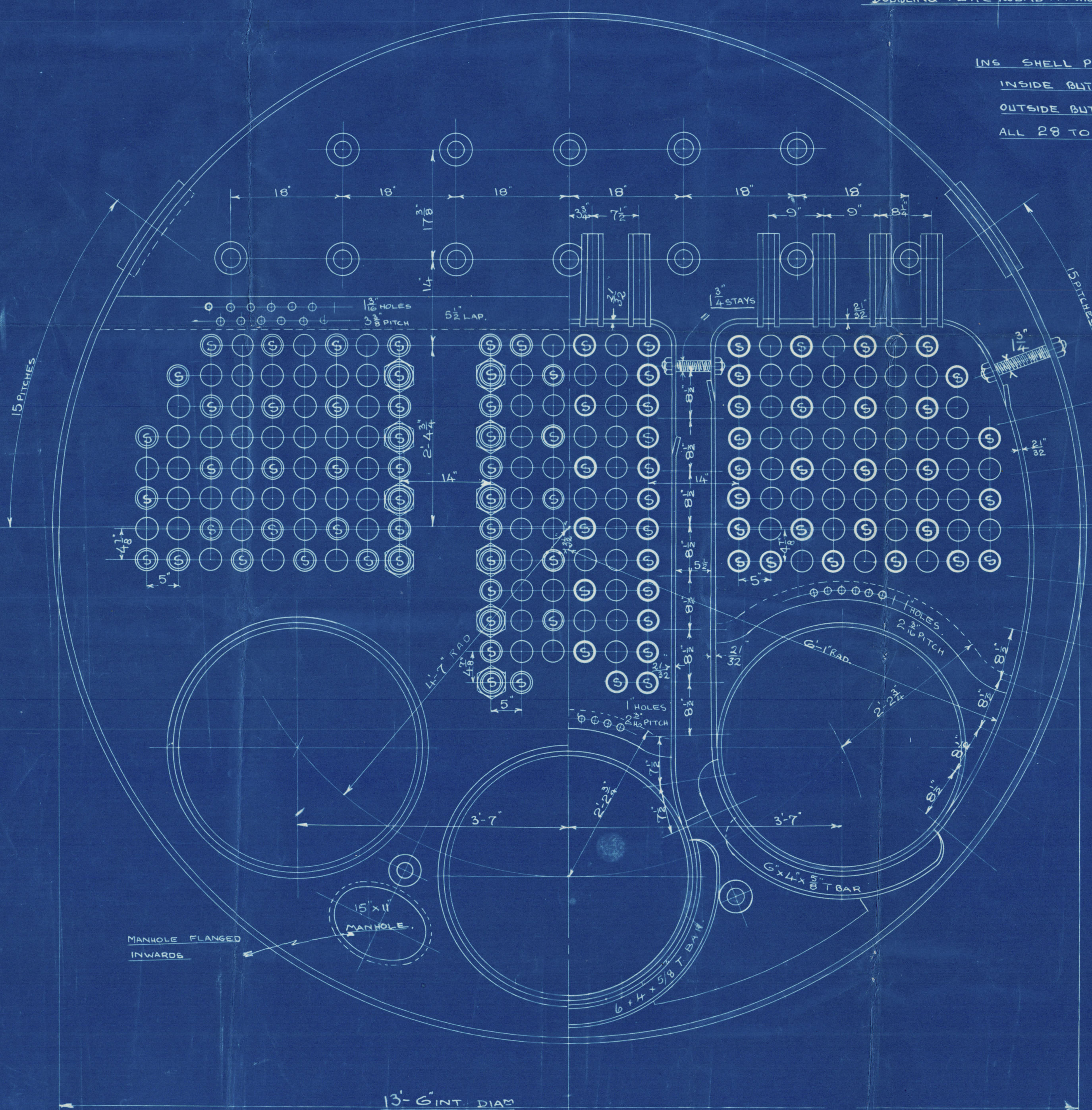
DOUBLING PLATE ROUND MANHOLE $1\frac{1}{8}$ " THICK

INS SHELL PLATE, $\frac{1}{8}$ " THICK

INSIDE BUTT STRAP $\frac{1}{8}$ " THICK

OUTSIDE BUTT STRAP $\frac{7}{8}$ THICK

ALL 28 TO 32 TONS TENSILE STRENGTH.



13'-6" INT. DIAM

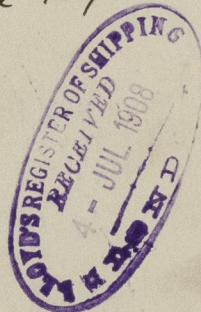
11'-0" MEAN LENGTH

No. A 111

Messrs
Carles & Co.
Amended Plan
Blr. No A III

No 1645
Lloyds List
360 lbs
29.9.08
J.B.

s/s River Dart
Hull Report No. 20 675.



RETAIN



© 2021

W1580-00100

Lloyd's Register
Foundation