

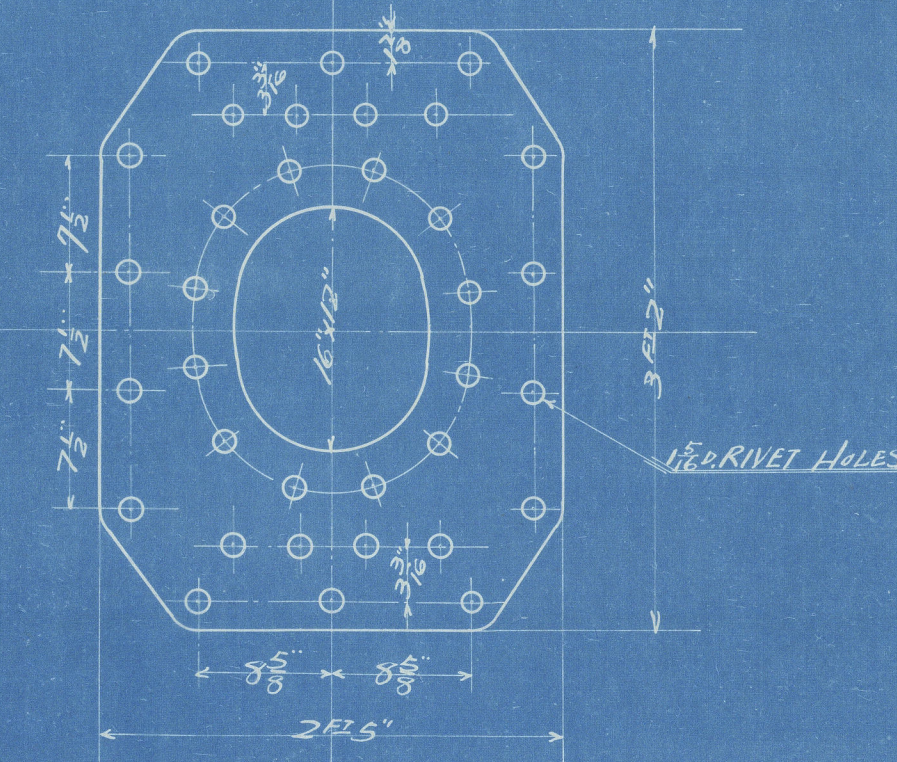
DIMENSIONS	FOR ONE BOILER
LENGTH OF FIRE BARS	5' 1 1/2"
AREA OF FIRE GRATE	46.5 SQ. FT.
DIA. OF TUBES OUTSIDE	3"
LENGTH OF TUBES BETWEEN PLATES	7' 8 1/2"
NO. OF TUBES	242
AREA THROUGH TUBES	1842 SQ. FT.
SURFACE OF TUBES	1482 SQ. FT.
TOTAL HEATING SURFACE	1842 SQ. FT.
WORKING PRESSURE	150 LBS. PER SQ. IN.

2-OFF

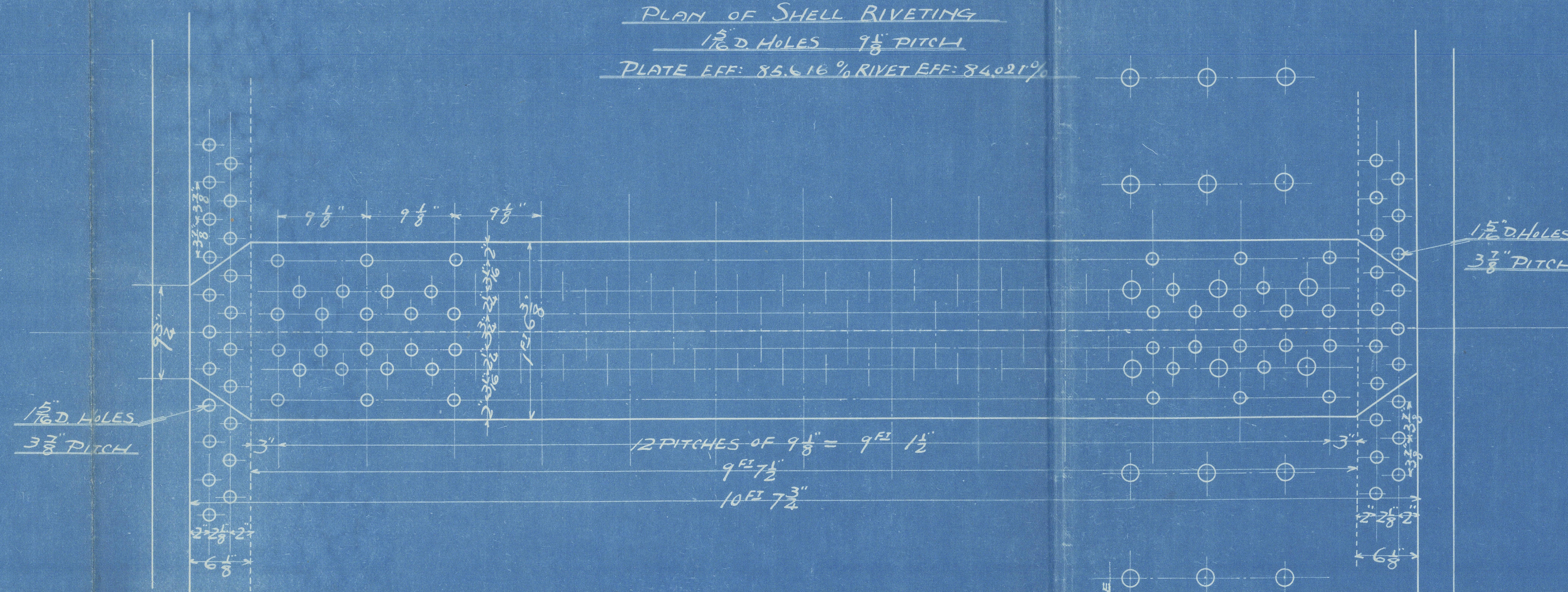
1-OFF THUS

1-OFF OTHER HAND

DOUBLE PLATE ROUND MANHOLE 1 1/2" THICK
FITTED WITH MANHOLE DOOR

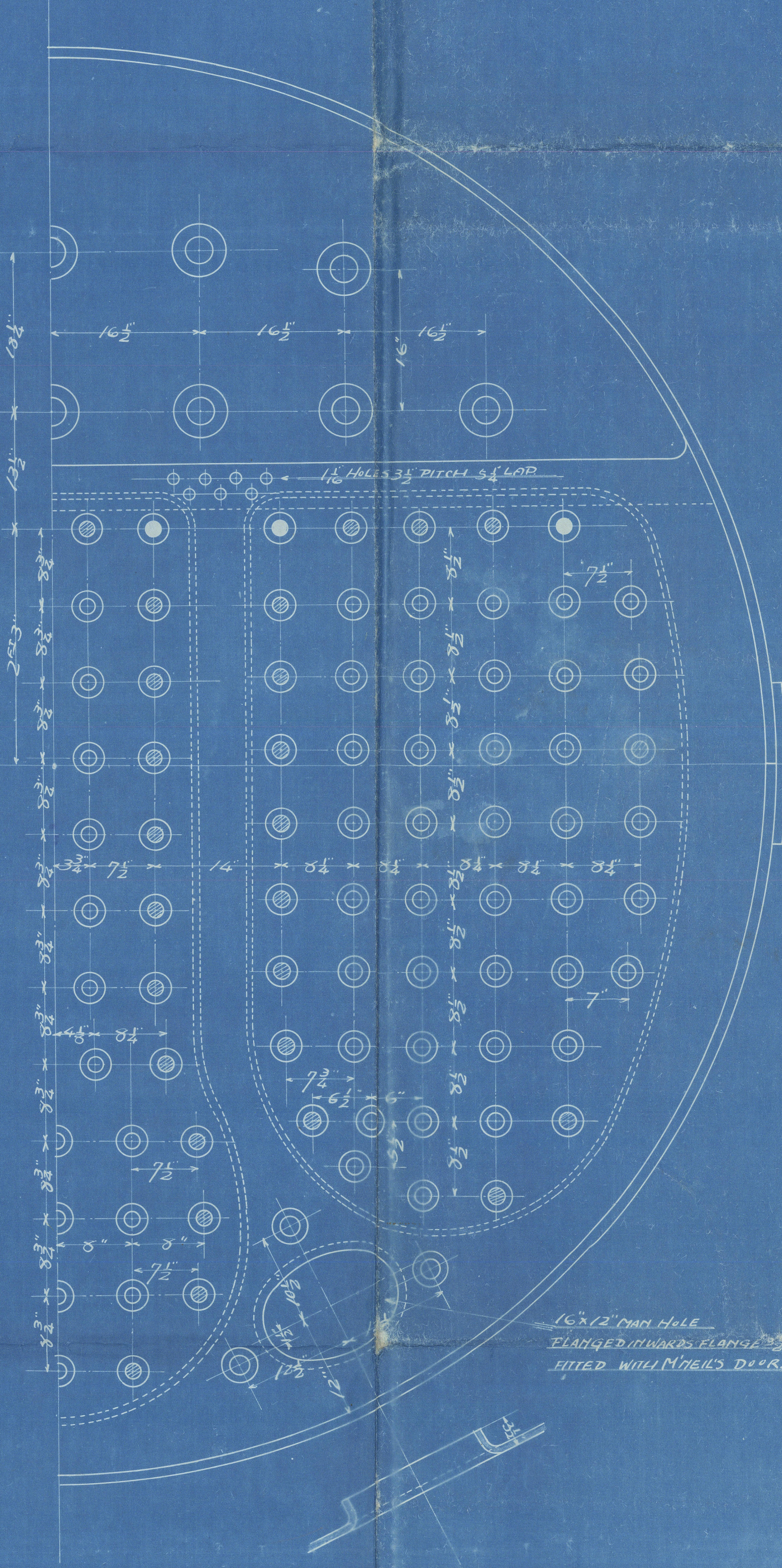
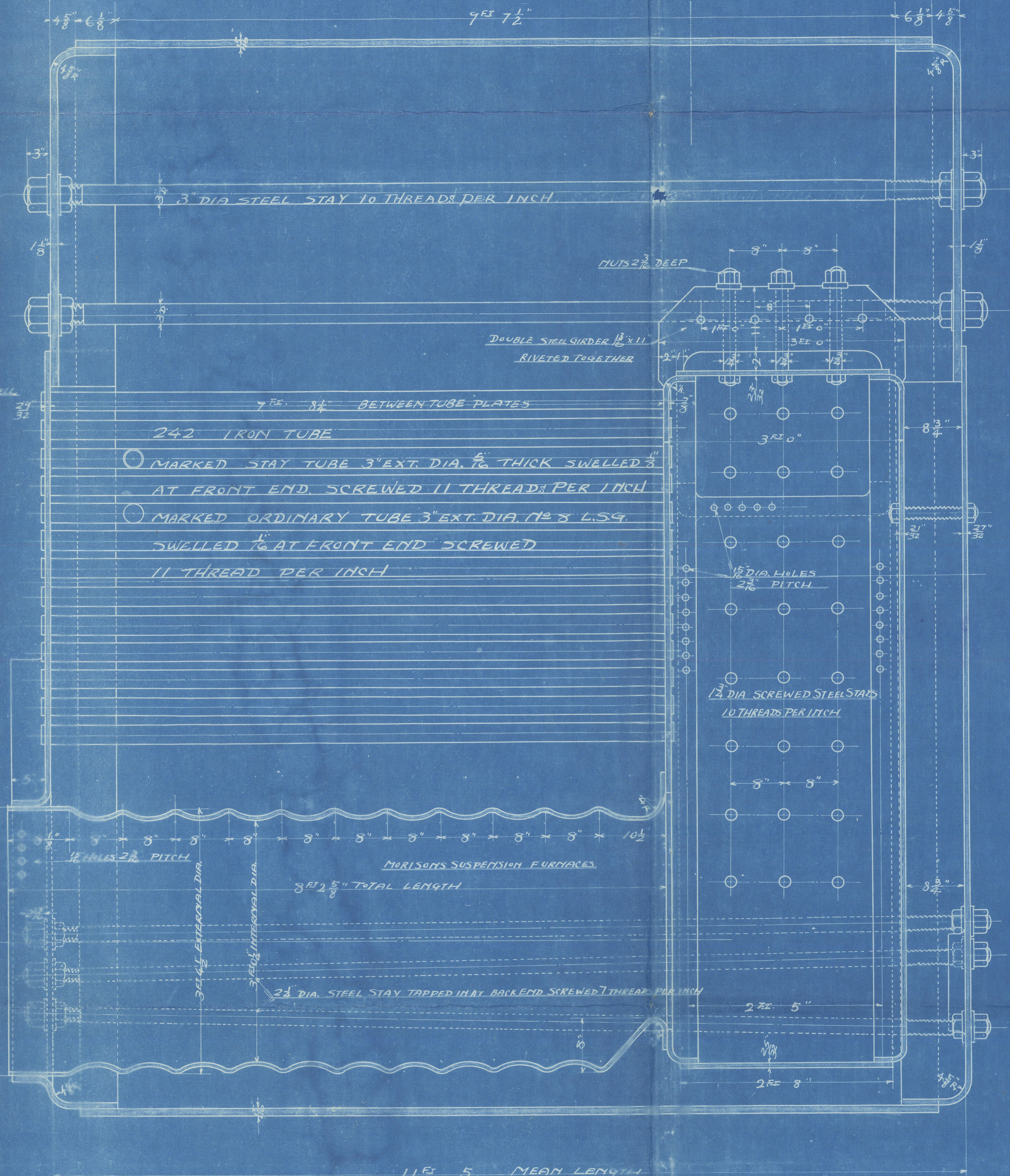
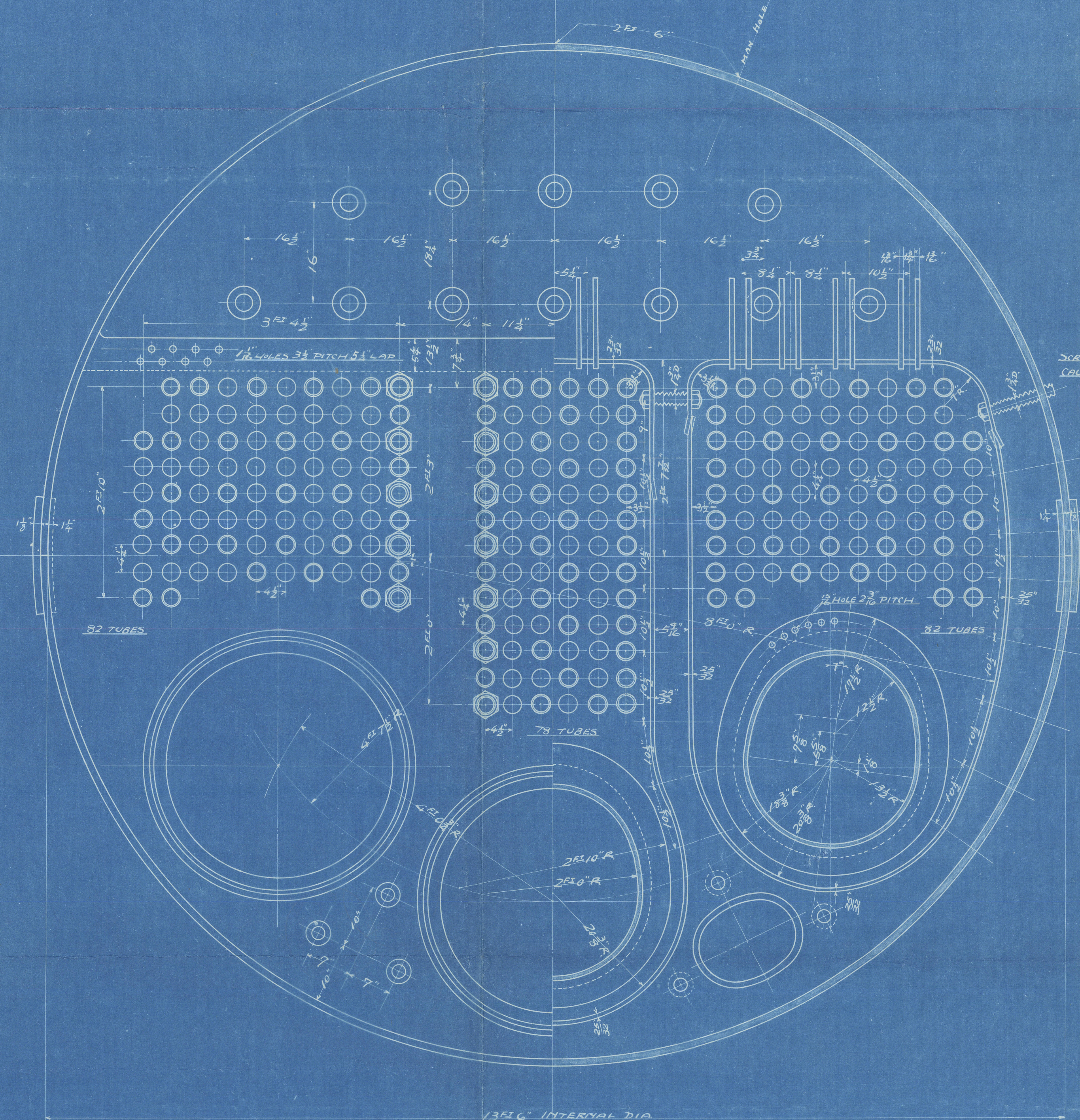


PLAN OF SHELL RIVETING
1/2" DIA. HOLES 7 1/2" PITCH
PLATE EFF. 85.616% RIVET EFF. 84.621%



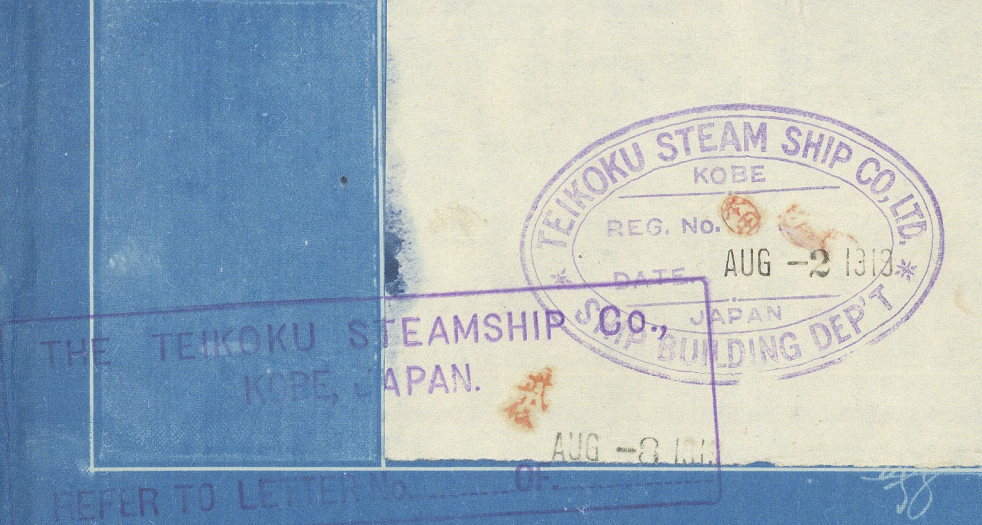
1/2" DIA. HOLES
7 1/2" PITCH

- MARKED 1/2" D. STEEL SCREWS STAY 10 THREADS PER INCH
- " 1/2" D. " " " 10 THREADS PER INCH
- " 2 1/2" D. " " " 9 " "



WORKING PRESSURE - 150 LBS./SQ. IN.
TESTING PRESSURE - 300 LBS./SQ. IN.
TO LLOYD'S SURVEY AND REQUIREMENTS

NO 53
3/8 KAMUJI MARU
MAIN STEEL
BOILER
SCALE 1"=1FOOT.



"Kamiji Maru"

Kobe Rpt 2578

14/7/19

BOILER

RETAIN



© 2021

Lloyd's Register
Foundation

W1579-0141