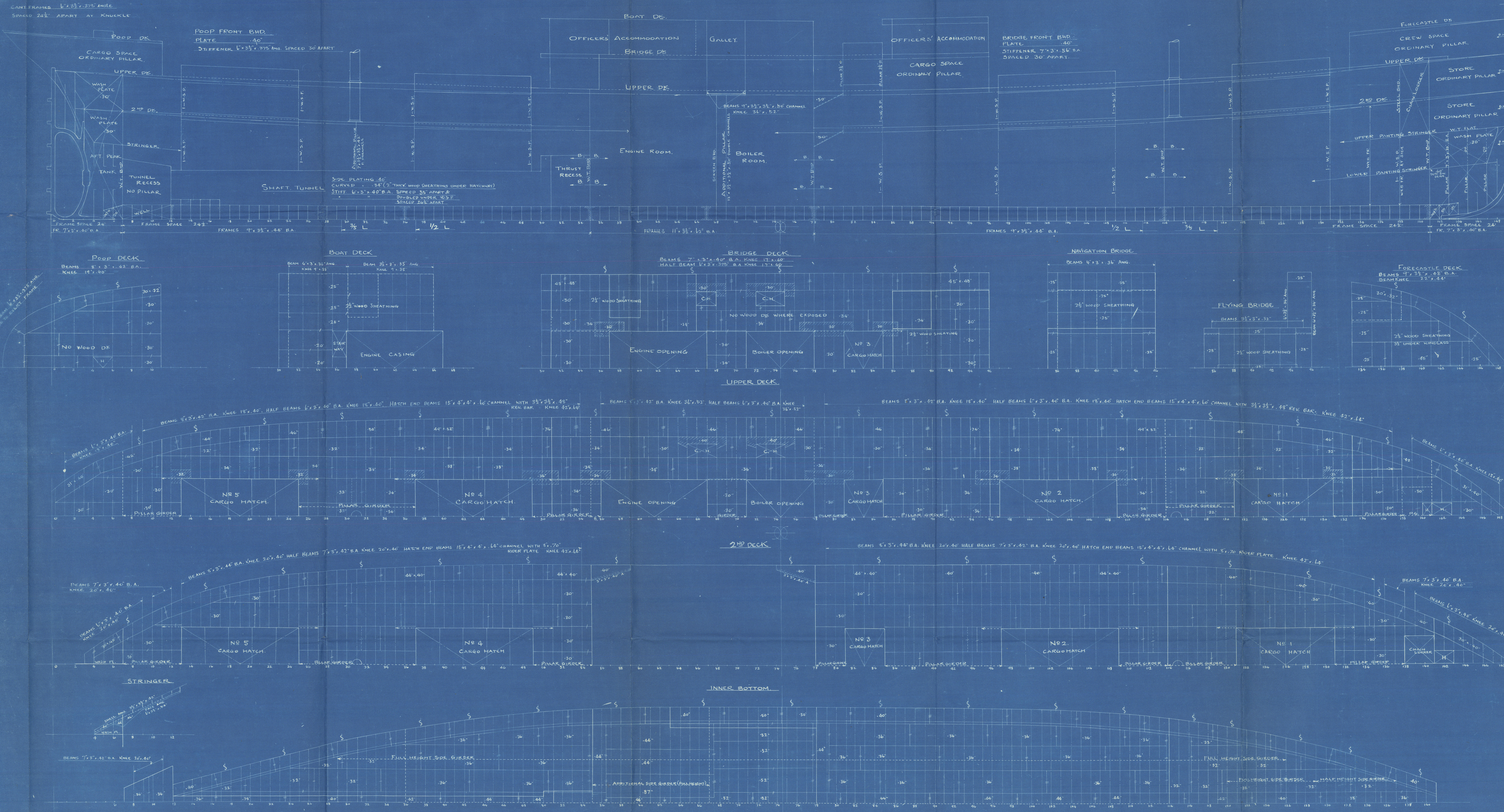


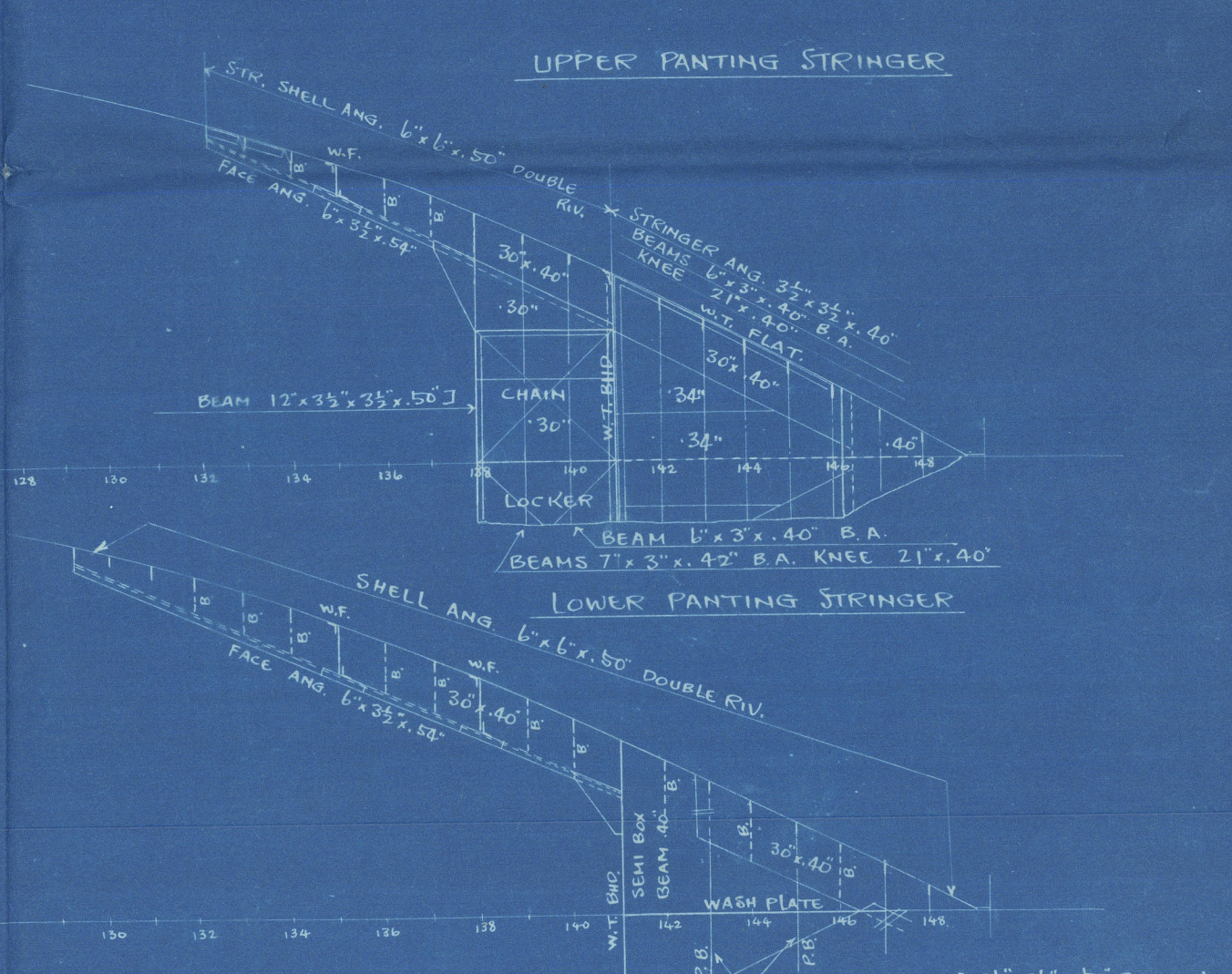
HARIMA NO. 50. CONSTRUCTION PROFILE, DECKS & INNER BOTTOM PLAN SCALE 1/8" TO ONE FOOT

ITEM	BRIDGE DECK					UPPER DECK					2ND DECK				
	NO. 5	NO. 4	NO. 3	NO. 2	NO. 1	NO. 5	NO. 4	NO. 3	NO. 2	NO. 1	NO. 5	NO. 4	NO. 3	NO. 2	NO. 1
SIZE OF HATCH	5' 2" x 10' 0"	20' 0" x 10' 0"	20' 0" x 10' 0"	20' 0" x 10' 0"	20' 0" x 10' 0"	5' 2" x 10' 0"	20' 0" x 10' 0"	20' 0" x 10' 0"	20' 0" x 10' 0"	20' 0" x 10' 0"	5' 2" x 10' 0"	20' 0" x 10' 0"	20' 0" x 10' 0"	20' 0" x 10' 0"	20' 0" x 10' 0"
DISTANCE OF HATCHES FROM CENTER	4' 0"	5' 1' 25"	4' 1' 0"	4' 1' 0"	4' 1' 0"	4' 0"	5' 1' 25"	4' 1' 0"	4' 1' 0"	4' 1' 0"	4' 0"	5' 1' 25"	4' 1' 0"	4' 1' 0"	4' 1' 0"
SIDE COAMING	3' 0"	4' 4"	4' 4"	4' 4"	4' 4"	3' 0"	4' 4"	4' 4"	4' 4"	4' 4"	3' 0"	4' 4"	4' 4"	4' 4"	4' 4"
END COAMING	3' 0"	4' 4"	4' 4"	4' 4"	4' 4"	3' 0"	4' 4"	4' 4"	4' 4"	4' 4"	3' 0"	4' 4"	4' 4"	4' 4"	4' 4"
COAMING ANGLE	NO. 1	NO. 3	NO. 4	NO. 5	NO. 5	NO. 1	NO. 3	NO. 4	NO. 5	NO. 5	NO. 1	NO. 3	NO. 4	NO. 5	NO. 5
DEPTH & THICK	15' 1" x 3/4"	15' 1" x 3/4"	15' 1" x 3/4"	15' 1" x 3/4"	15' 1" x 3/4"	15' 1" x 3/4"	15' 1" x 3/4"	15' 1" x 3/4"	15' 1" x 3/4"	15' 1" x 3/4"	15' 1" x 3/4"	15' 1" x 3/4"	15' 1" x 3/4"	15' 1" x 3/4"	15' 1" x 3/4"
TOP & BOTTOM ANG.	35' x 5' 40"	35' x 5' 40"	35' x 5' 40"	35' x 5' 40"	35' x 5' 40"	35' x 5' 40"	35' x 5' 40"	35' x 5' 40"	35' x 5' 40"	35' x 5' 40"	35' x 5' 40"	35' x 5' 40"	35' x 5' 40"	35' x 5' 40"	35' x 5' 40"
CARRIER ANGLE	35' x 5' 40"	35' x 5' 40"	35' x 5' 40"	35' x 5' 40"	35' x 5' 40"	35' x 5' 40"	35' x 5' 40"	35' x 5' 40"	35' x 5' 40"	35' x 5' 40"	35' x 5' 40"	35' x 5' 40"	35' x 5' 40"	35' x 5' 40"	35' x 5' 40"
HORIZONTAL STIFF	7' 3' x 40"	7' 3' x 40"	7' 3' x 40"	7' 3' x 40"	7' 3' x 40"	7' 3' x 40"	7' 3' x 40"	7' 3' x 40"	7' 3' x 40"	7' 3' x 40"	7' 3' x 40"	7' 3' x 40"	7' 3' x 40"	7' 3' x 40"	7' 3' x 40"



GIRDER AT HEAD OF W.S.P.									
FR. NO.	S	B	H	S" x B" x H"	DEPTH OF BEAM (GIRDER IN)	THICK. OF PLATE	DOUBLE ANGLES	RIDER PLATE	
UPPER DECK									
7-13	12.25	16.00	8.3	17.0.28	8"	15'	5" x 5" x 40"		
15-27	24.50	20.83	5	24.5.11	"	40"	5" x 5" x 40"	13" x 50"	
47-55	15.25	21.34	7.5	24.5.14	"	40"	5" x 5" x 40"		
55-97	24.50	21.82	9.6	133.31	"	20"	5" x 5" x 40"	13" x 50"	
101-118	10.21	21.08	5	10.7.87	"	15'	5" x 5" x 40"		
118-121	15.24	20.75	5	21.1.85	"	40"	5" x 5" x 40"		
121-138	14.24	16.00	8.6	23.7.77	"	40"	5" x 5" x 40"		
138-141	1.12	15.00	10	48.1.61	12"	30'	3 1/2" x 5" x 40"	SHOLE	
SECOND DECK									
7-13	12.25	11.17	8	13.4.01	7"	15'	5" x 5" x 40"		
25-37	24.50	21.88	5	10.6.52	8"	17'	5" x 5" x 40"	13' x 50"	
47-55	15.25	21.93	"	24.5.14	"	15'	40"	5" x 5" x 40"	
55-97	24.50	21.88	"	10.6.57	"	17'	54"	5" x 5" x 40"	13' x 50"
101-118	10.21	21.17	"	13.7.11	"	15'	40"	5" x 5" x 40"	
118-121	15.24	21.25	"	3.7.15	"	40"	5" x 5" x 40"		
121-138	14.24	15.00	"	24.5.05	7-8"	"	40"	5" x 5" x 40"	

W.S. PILLAR									
FR. NO	S	B	H	S x B x H 100	LENGTH OF PILLAR	DOUBLE CHANNELS	RIDER PLATE		
UPPER DECK									
13	15.375	17.50	5.56	17.87	17' 8"	15' 40"	15' x 50", 35' 40"		
25	24.500	20.25	5	24.50	"	"	15' x 50"		
37	24.500	21.25	5	24.03	"	"	7' 30", 35' 40"		
49	15.375	21.42	6.11	24.05	"	"	7' 30", 35' 40"		
55	17.400	21.42	10	41.50	"	"	8' 4", 41' 50", 35' 40"		
67	24.500	21.42	7.08	27.16	"	"	7' 30", 35' 40", 35' 40"		
109	17.340	21.17	5	18.30	"	"	15' 30", 25' 40"		
121	17.400	20.40	5	17.90	"	"	7' 30", 35' 40"		
131	17.54	18.00	4.47	20.22	"	"	"		
2ND DECK									
13	15.375	14.00	13.56	24.00	10' 4"	12' 30"	15' x 50", 35' 40"		
25	24.50	14.83	13	13.16	9' 7"	"	"	10' x 42"	
37	24.50	21.42	13	13.20	9' 0"	"	"	"	
49	15.375	21.80	14.11	11.64	8' 7"	9' 30"	15' x 50", 25' 40"	10' x 42"	
55	17.40	21.80	15	76.30	15' 11"	12' 30"	15' x 50", 35' 40"	12' x 42"	
67	24.50	21.75	15.08	50.40	15' 11"	"	15' x 50"	11' x 42"	
109	17.34	21.35	13	49.08	17' 11"	"	15' x 50"	"	
121	17.40	20.72	13	52.20	18' 5"	"	15' x 50"	12' x 42"	
131	17.54	17.25	14.47	43.33	30' 1"	"	15' x 42"	"	
138	10.21	12.25	20.45	25.55	12' 30"	8' 4"	15' x 4", 10' x 42"		



T. S.S. Form No. 34.

HARIMA YARD No. 50

Ship's Name: "IWATE MARU"

CONSTRUCTION PROFILE DECK & INNER
BOTTOM PLAN.

No. _____

TEIKOKU STEAMSHIP CO., LTD., KOBE, JAPAN.

RETAIN



© 2020

Lloyd's Register
Foundation

W1375-0074