

LENGTH OVER ALL 401'-0"
 LENGTH ON 24'-0" WL. 390'-0"
 BEAM MOULDED 54'-0"
 LOAD DRAFT 24'-0"
 DEPTH TO 2ND DECK 23'-0"
 DEPTH TO UPPER DECK 32'-0"
 DEPTH TO BRIDGE DECK 40'-0"
 NO SHEER

TO CLASS A1@ WITH THE AMERICAN BUREAU OF SHIPPING
 TO CLASS 100-A1 LLOYDS REGISTER OF SHIPPING

STEEL 10 1/2 x 2 1/2
 PROPELLER POST 10 1/2 x 7 1/2
 RUDDER POST 4 x 7 1/2
 RUDDER PLATE 1 1/2
 RUDDER STOCK 11" DIA. PINTLESS 5 1/8" DIA.
 FRAME SPACING 24" IN PEAKS 27" ELSEWHERE
 PEAK FRAMES 3' x 3 1/2" x 3/8" L
 PEAK REV. FR. 4' x 3 1/2" x 1/2" L

WEB FRAMES LOCATED AS PER DR. F-5001
 PLATE AS SHOWN 7/16" DEPTH FR 24"
 FACE L 6' x 3 1/2" x 1/2" SGL

EQUIPMENT	TO AM. BU. OF S.	TO LLOYDS REG.
EQUIPMENT (TONNAGE) (NO. 553)	7665 * EACH	7160 * EACH
2 STOCKLESS BOWER ANCHORS	155"	2450"
1 KEDGE	2-270 FATH.	2-270 FATH.
2 STUD CHAIN CABLE	90 FATHS 4 1/2" CIRC	90 FATHS 4 1/2" CIRC
5 W.R. STREAM LINE	125	120
5 W.R. TOWLINE	2-90	2-90
HAWSERS	2-90	2-90
WARPS	2-90	2-90
BRIDGE FRONT	3/4"	3/8"
BOY ANGLE	3 1/2" x 3 1/2" SGL	3 1/2" x 3 1/2" SGL
STIFFENERS (CL)	10' x 20" L SP 30"	5' x 3' x 3/8" SP 36"
	CLIPS 6' x 6' x 1/2" TOP	CLIPS 6' x 6' x 1/2" TOP
	RIV. IN EACH LEG	RIV. IN EACH LEG

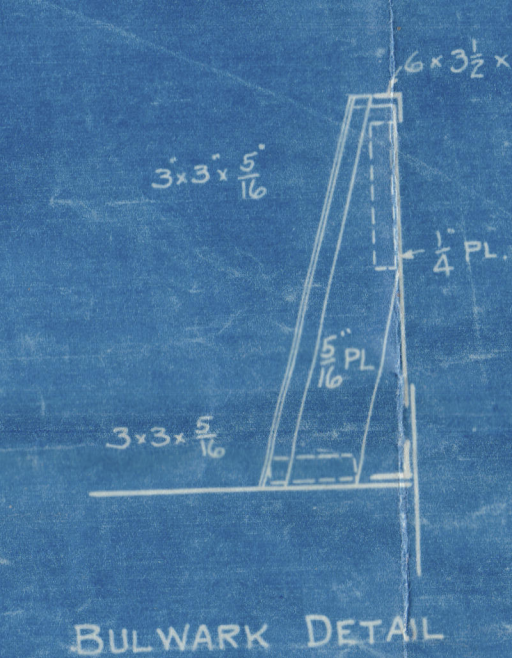
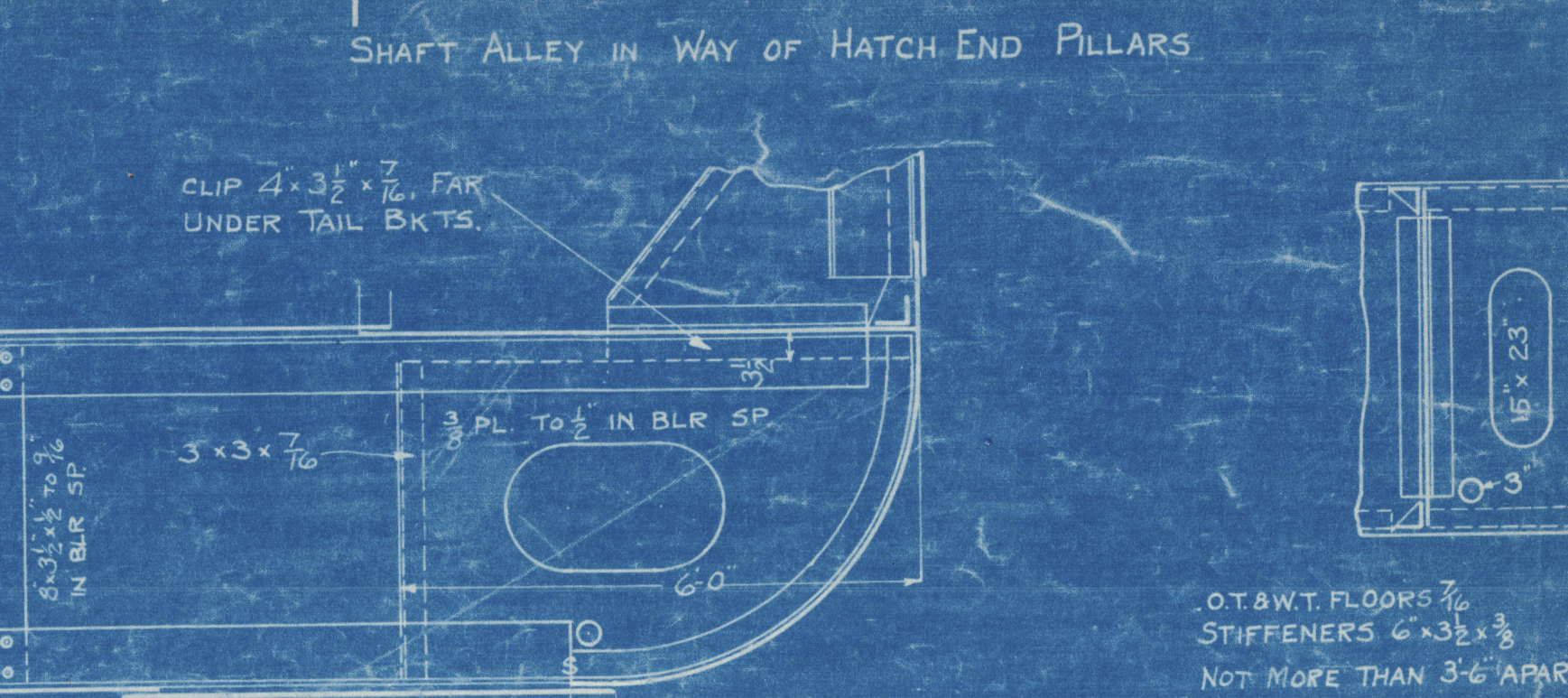
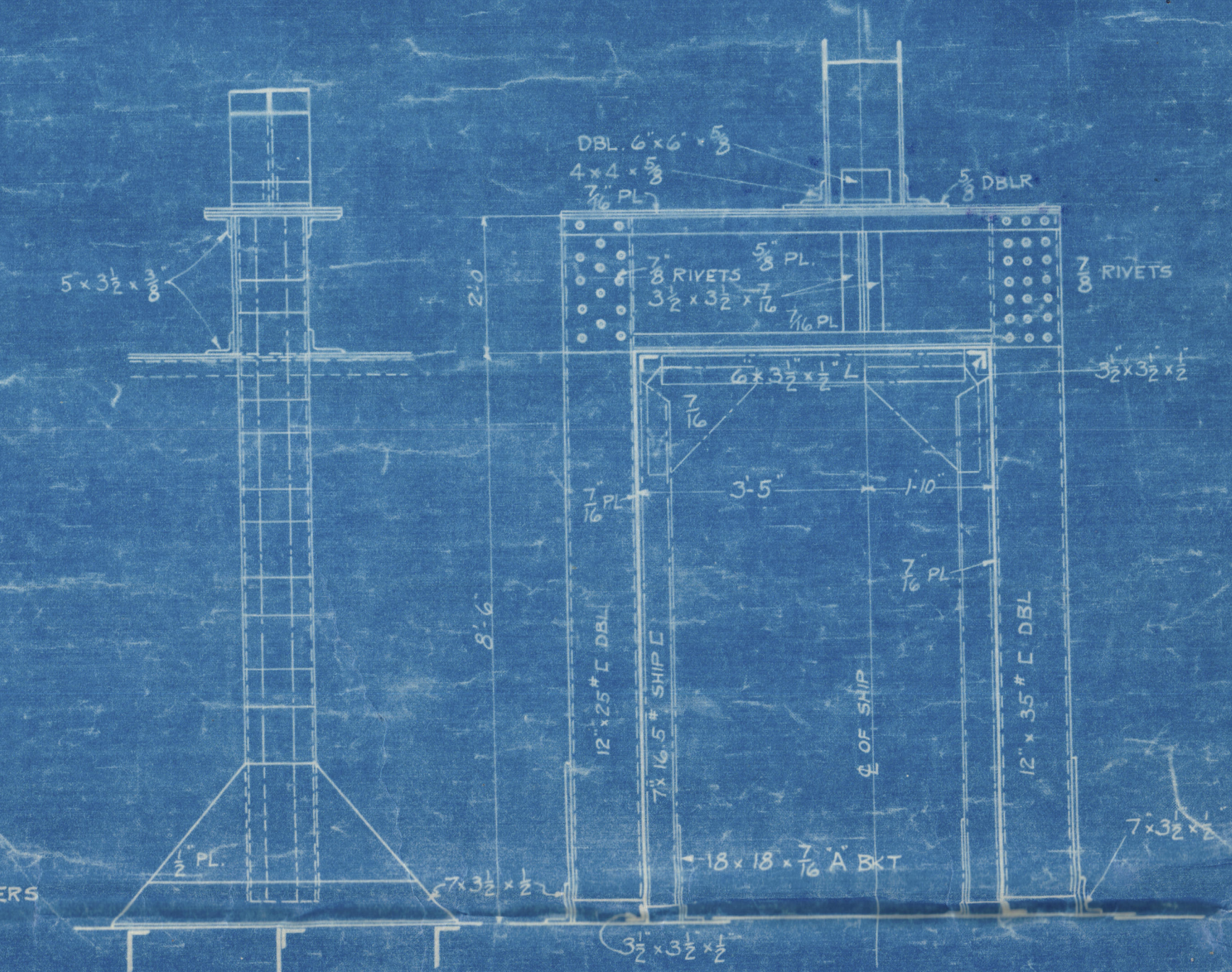
DEEP FUEL OIL TANK
 PLATING 5/16" TO 3/8"
 BOY L 3 1/2" x 3 1/2" x 1/2" DBL VERTICAL STIFFS 7' x 14 1/2" SHIP L SPACED 27"
 HORIZONTAL STIFFENERS 2-15' x 33"
 CHNT FRAMES 5' x 3 1/2"
 REV FR. 4' x 3 1/2" x 1/2"
 DEPTH OF FRAMING 6"

STRONG BEAMS IN MCHY SPACE
 12' x 25" L DBL

PLANS TO BE SUBMITTED FOR APPROVAL
 STERN FRAME & RUDDER
 BULKHEADS
 PAINTING ARRANGEMENTS
 ENGINE SEATING
 SHAFT STOODS
 HOUSES ON BRIDGE DECK OVER 34' LONG
 HATCH DETAILS

EQUIPMENT ACTUALLY SUPPLIED
 2 STOCKLESS BOWER ANCHORS 7665 EACH
 1 KEDGE 2-270 FATH.
 2 STUD CHAIN CABLE 90 FATHS 4 1/2" CIRC
 5 W.R. STREAM LINE 125
 5 W.R. TOWLINE 2-90
 HAWSERS 2-90
 WARPS 2-90

EQUIPMENT	TO AM. BU. OF S.	TO LLOYDS REG.
EQUIPMENT (TONNAGE) (NO. 553)	7665 * EACH	7160 * EACH
2 STOCKLESS BOWER ANCHORS	155"	2450"
1 KEDGE	2-270 FATH.	2-270 FATH.
2 STUD CHAIN CABLE	90 FATHS 4 1/2" CIRC	90 FATHS 4 1/2" CIRC
5 W.R. STREAM LINE	125	120
5 W.R. TOWLINE	2-90	2-90
HAWSERS	2-90	2-90
WARPS	2-90	2-90
BRIDGE FRONT	3/4"	3/8"
BOY ANGLE	3 1/2" x 3 1/2" SGL	3 1/2" x 3 1/2" SGL
STIFFENERS (CL)	10' x 20" L SP 30"	5' x 3' x 3/8" SP 36"
	CLIPS 6' x 6' x 1/2" TOP	CLIPS 6' x 6' x 1/2" TOP
	RIV. IN EACH LEG	RIV. IN EACH LEG



BULKHEAD NOTES
 FORE PEAK BND BET 2ND & UPPER DECKS
 PLATING 5/16" TO 3/8" BOY L 3' x 3 1/2" x 1/2" SGL
 STIFFENERS 6' x 3 1/2" x 1/2" DBL VERTICAL STIFFS 7' x 14 1/2" SHIP L SPACED 27"
 FORE PEAK BND BET 2ND DECK
 PLATING 5/16" TO 3/8" BOY L 3' x 3 1/2" x 1/2" SGL
 STIFFENERS 6' x 3 1/2" x 1/2" DBL VERTICAL STIFFS 7' x 14 1/2" SHIP L SPACED 27"
 VERT STIFFENERS 7' x 14 1/2" SHIP L SPACED 27"
 TOP & BOTTOM
 HORIZONTAL WEBS 24" x 3 1/2" x 1/2" DBL VERTICAL STIFFS 7' x 14 1/2" SHIP L SPACED 27"
 FACE BAR 6' x 3 1/2" x 1/2" DBL VERTICAL STIFFS 7' x 14 1/2" SHIP L SPACED 27"

DEEP TANK BHDS
 PLATING 5/16" TO 3/8" BOY L 3' x 3 1/2" x 1/2" SGL
 STIFFENERS 6' x 3 1/2" x 1/2" DBL VERTICAL STIFFS 7' x 14 1/2" SHIP L SPACED 27"
 CENTRE LINE BND PLATING 5/16" TO 3/8" BOY L 3' x 3 1/2" x 1/2" SGL
 STIFFENERS 6' x 3 1/2" x 1/2" DBL VERTICAL STIFFS 7' x 14 1/2" SHIP L SPACED 27"
 LOWER SEAM D.R. DEEP TANK & BHDS

SHAFT ALLEY
 PLATING 5/16" TO 3/8" BOY L 3' x 3 1/2" x 1/2" SGL
 STIFFENERS 6' x 3 1/2" x 1/2" DBL VERTICAL STIFFS 7' x 14 1/2" SHIP L SPACED 27"
 W.T. FLAT AFT AND THRUST RECESS
 PLATING 5/16" TO 3/8" BOY L 3' x 3 1/2" x 1/2" SGL
 STIFFENERS 6' x 3 1/2" x 1/2" DBL VERTICAL STIFFS 7' x 14 1/2" SHIP L SPACED 27"

AFTER PEAK BND
 PLATING 5/16" TO 3/8" BOY L 3' x 3 1/2" x 1/2" SGL
 STIFFENERS 6' x 3 1/2" x 1/2" DBL VERTICAL STIFFS 7' x 14 1/2" SHIP L SPACED 27"

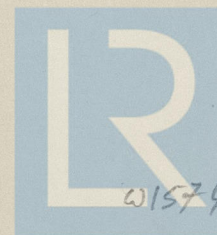
APPROVED BY
 LLOYD'S REGISTER OF SHIPPING
 AMERICAN BUREAU OF SHIPPING
 EMERGENCY FLEET CORPORATION
 "A" SHIP
 MIDSHIP SECTION
 HULL
 7500 TON D. W. CARGO SHIP
 UNITED STATES SHIPPING BOARD
 EMERGENCY FLEET CORPORATION
 AMERICAN INTERNATIONAL SHIPBUILDING CORPORATION, AGENT
 PHILADELPHIA OFFICE

DATE	ALTERATION	BY
1/1/17	1. KEEELSON ANGLES DBLD	E.M.R.
1/1/17	2. BND BODY ANGLES DBLD	E.M.R.
1/1/17	3. O.T. FLOOR BODY ANGLES DBLD	E.M.R.
1/1/17	4. DECK BEAMS CORRECTED & RE-MADE	E.M.R.
1/1/17	5. GIRDERS & SUB CHANNEL	E.M.R.
1/1/17	6. END FRAMES MADE SHIP CHANNEL	E.M.R.
1/1/17	7. BOTTOM CONNECTION 22 BND	E.M.R.
1/1/17	8. STIFFS CHANGED	E.M.R.
1/1/17	9. ANGLES TO BNTS IN LIEU OF FLGS	E.M.R.
1/1/17	10. LOWER DECK WATER END BEAMS	E.M.R.
1/1/17	11. TRANSOM & FLOORS OMITTED	E.M.R.
1/1/17	12. PILLAR KEELS CORRECTED	E.M.R.
1/1/17	13. FORE PEAK STIFF CORRECTED	E.M.R.
1/1/17	14. ANGLE CLIPS BET LONGS & BOLD	E.M.R.
1/1/17	15. FLOORS REVERSED	E.M.R.
1/1/17	16. STIFFENERS ON LONGS AT OPEN FLOOR	E.M.R.
1/1/17	17. CHANGED FROM INBOARD TO OUTBOARD	E.M.R.
1/1/17	18. SIDE OF LONGS	E.M.R.
1/1/17	19. LOWER DECK HATCH COAMINGS	E.M.R.
1/1/17	20. MODIFIED	E.M.R.
1/1/17	21. UPPER & SECOND DECK HATCHING BEAMS	E.M.R.
1/1/17	22. BOLD PILLARS INCREASED IN SIZE	E.M.R.
1/1/17	23. PILLARS CHANGED BY BARADDED BNTS	E.M.R.
1/1/17	24. BND & INTO BUNDERS FROM	E.M.R.
1/1/17	25. BNTS IMPROVED TO LONG HATCH	E.M.R.
1/1/17	26. HATCH END COAMING DETAIL	E.M.R.
1/1/17	27. CHANGED	E.M.R.
1/1/17	28. WATER BARRING D.L. CHANGED AT UP DECK	E.M.R.
1/1/17	29. HATCH END BNTS & WEB ADDED	E.M.R.
1/1/17	30. TRACED FROM TRACING	E.M.R.
1/1/17	31. EQUIPMENT CORRECTED AND	E.M.R.
1/1/17	32. MODIFIED	E.M.R.
1/1/17	33. LLOYD'S EQUIPMENT NUMERICAL	E.M.R.
1/1/17	34. SECTION ADDED	E.M.R.

S.S. "Saecarappa" Hull No. 495
American International Corp.
Hog Island - Pa.
Midship Section



RETAIN



© 2020

Lloyd's Register
Foundation

01574-0147