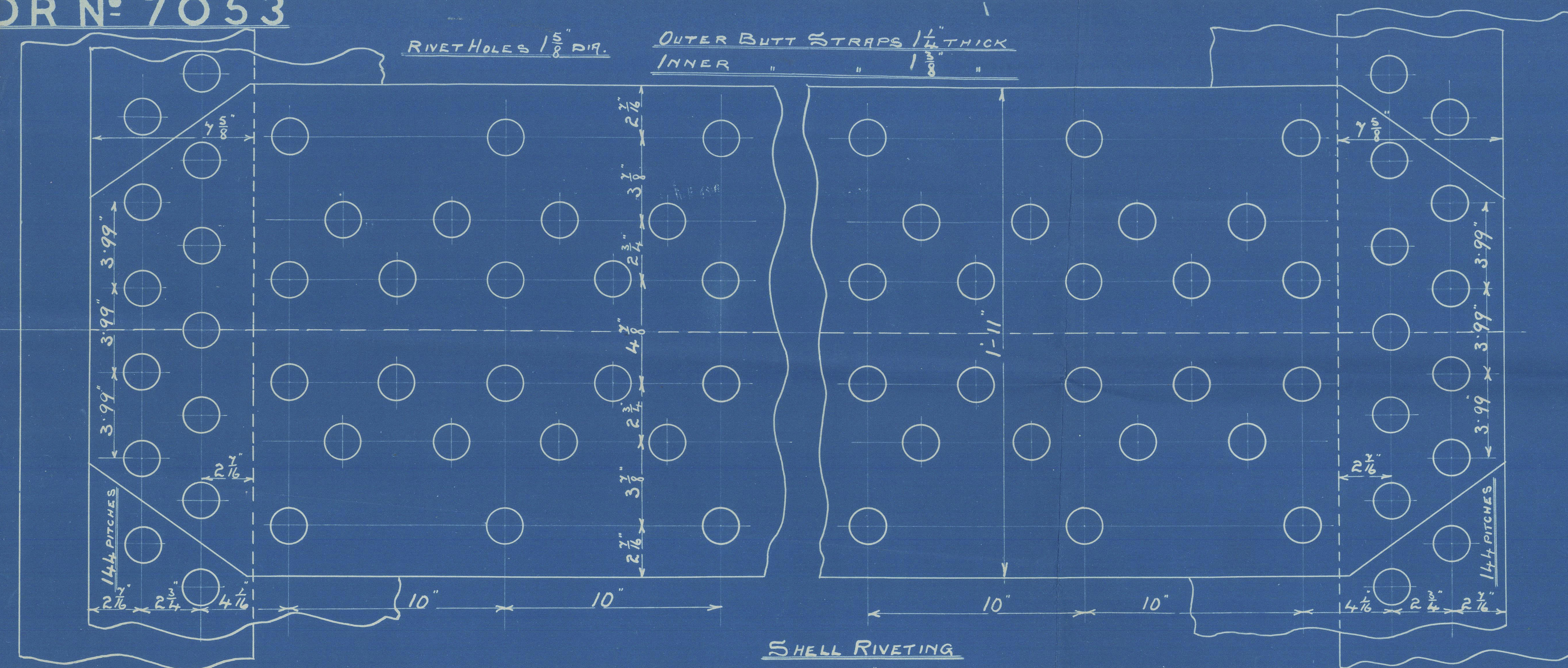
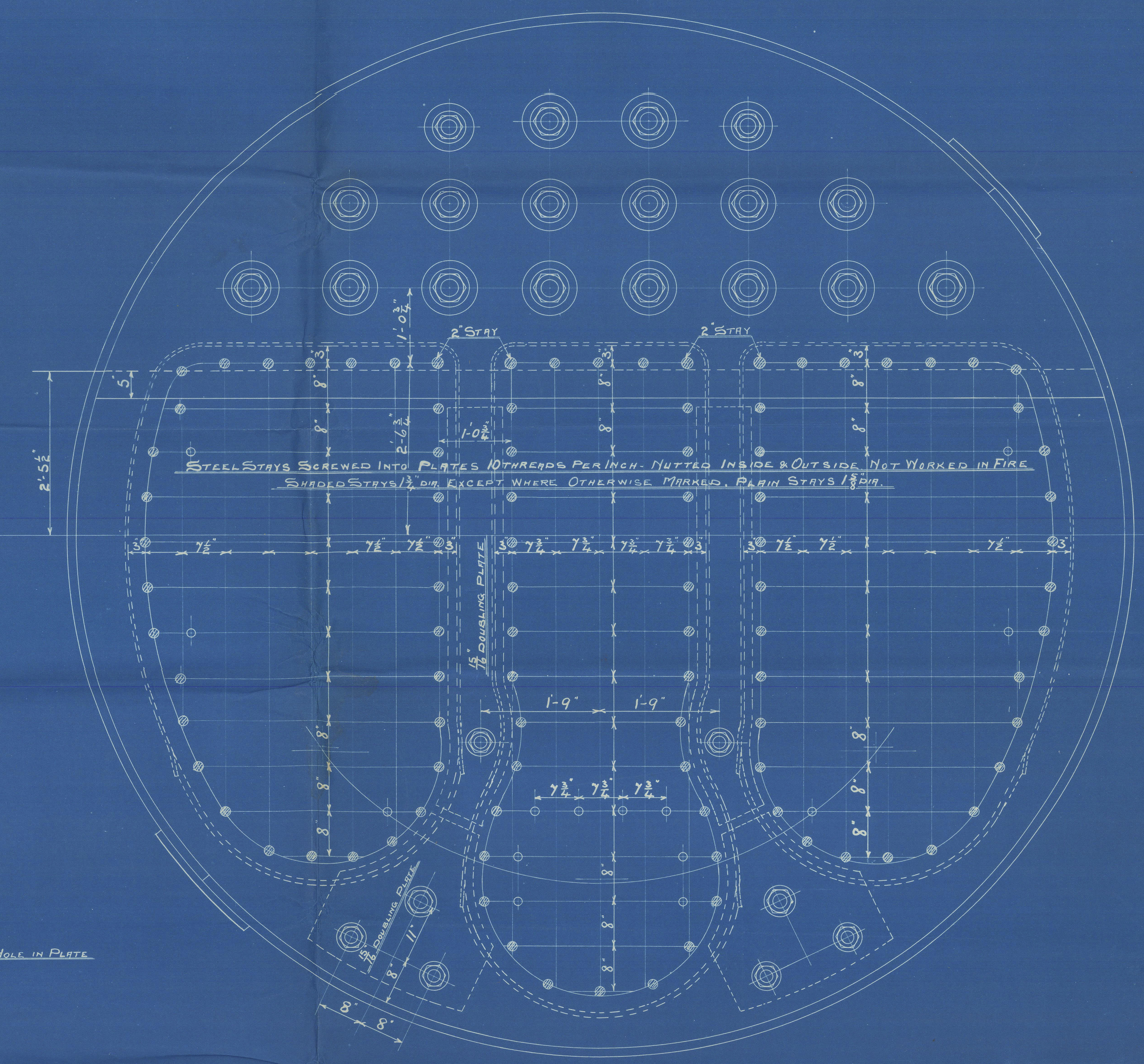
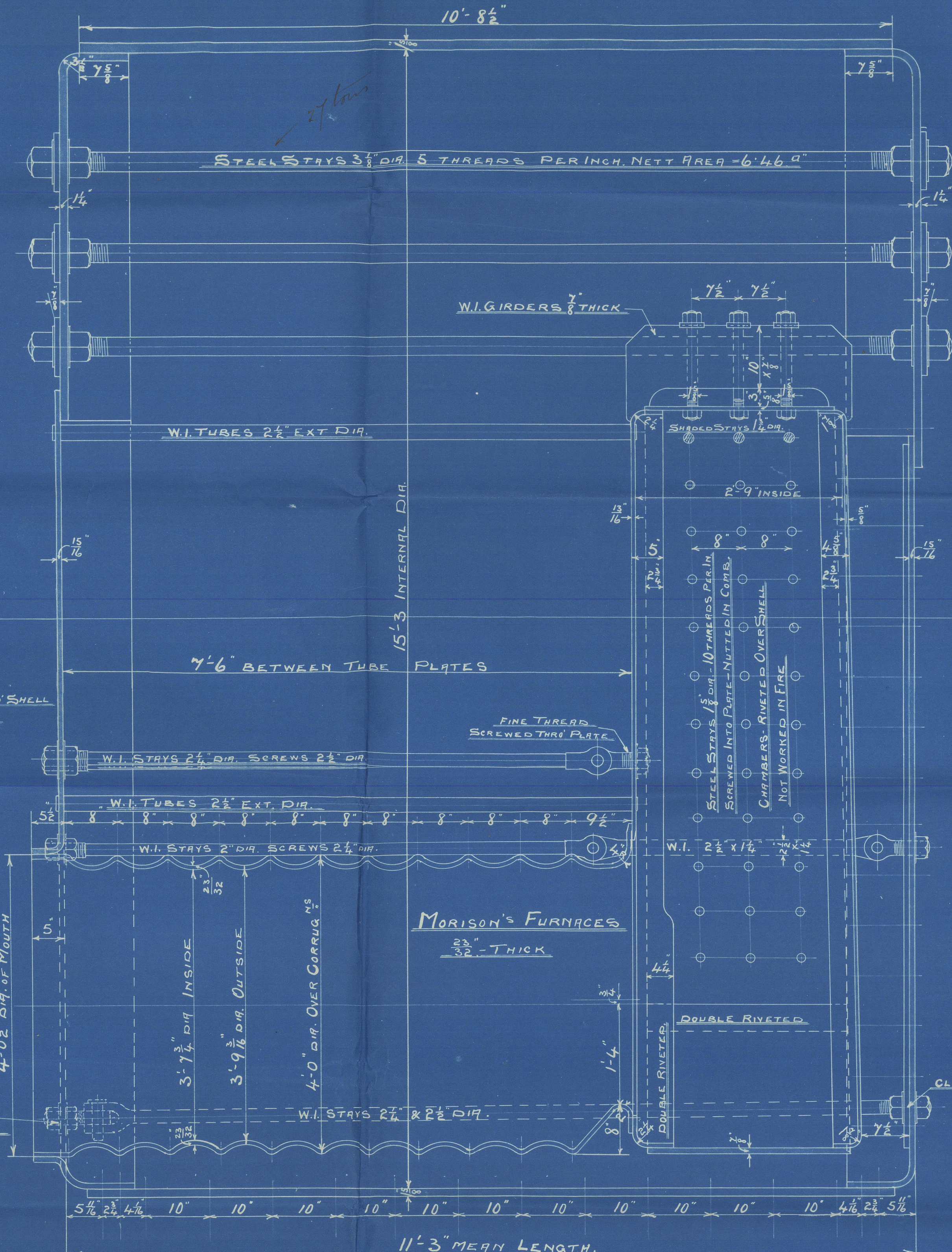
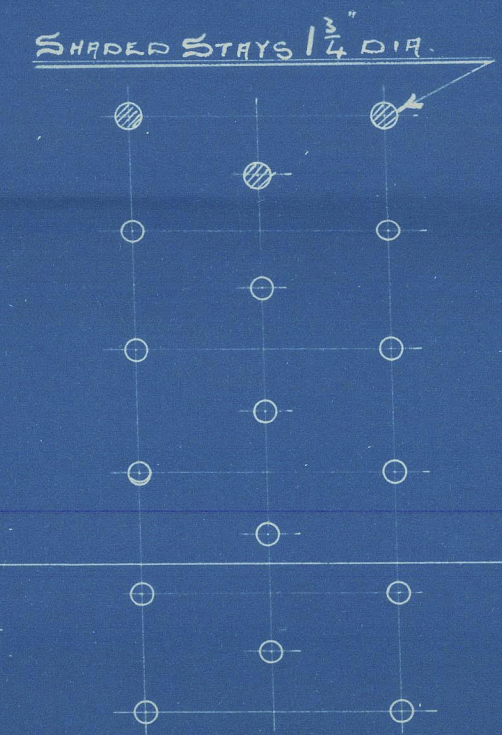
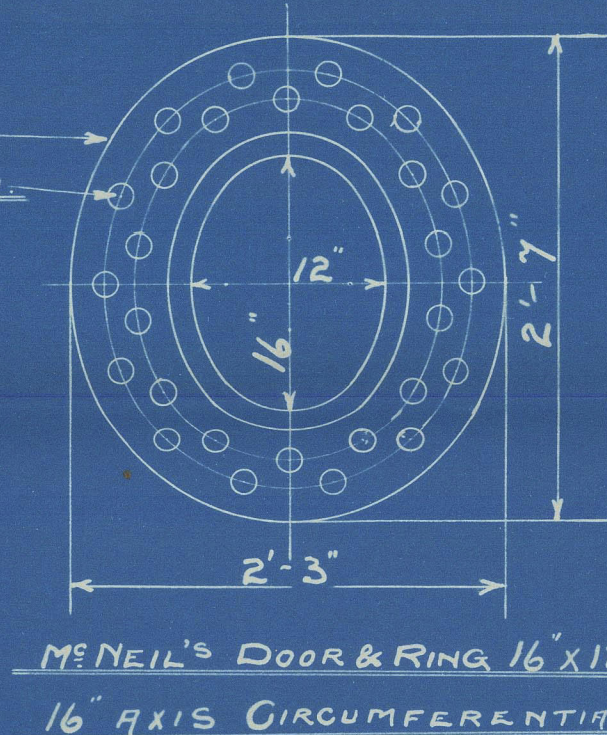
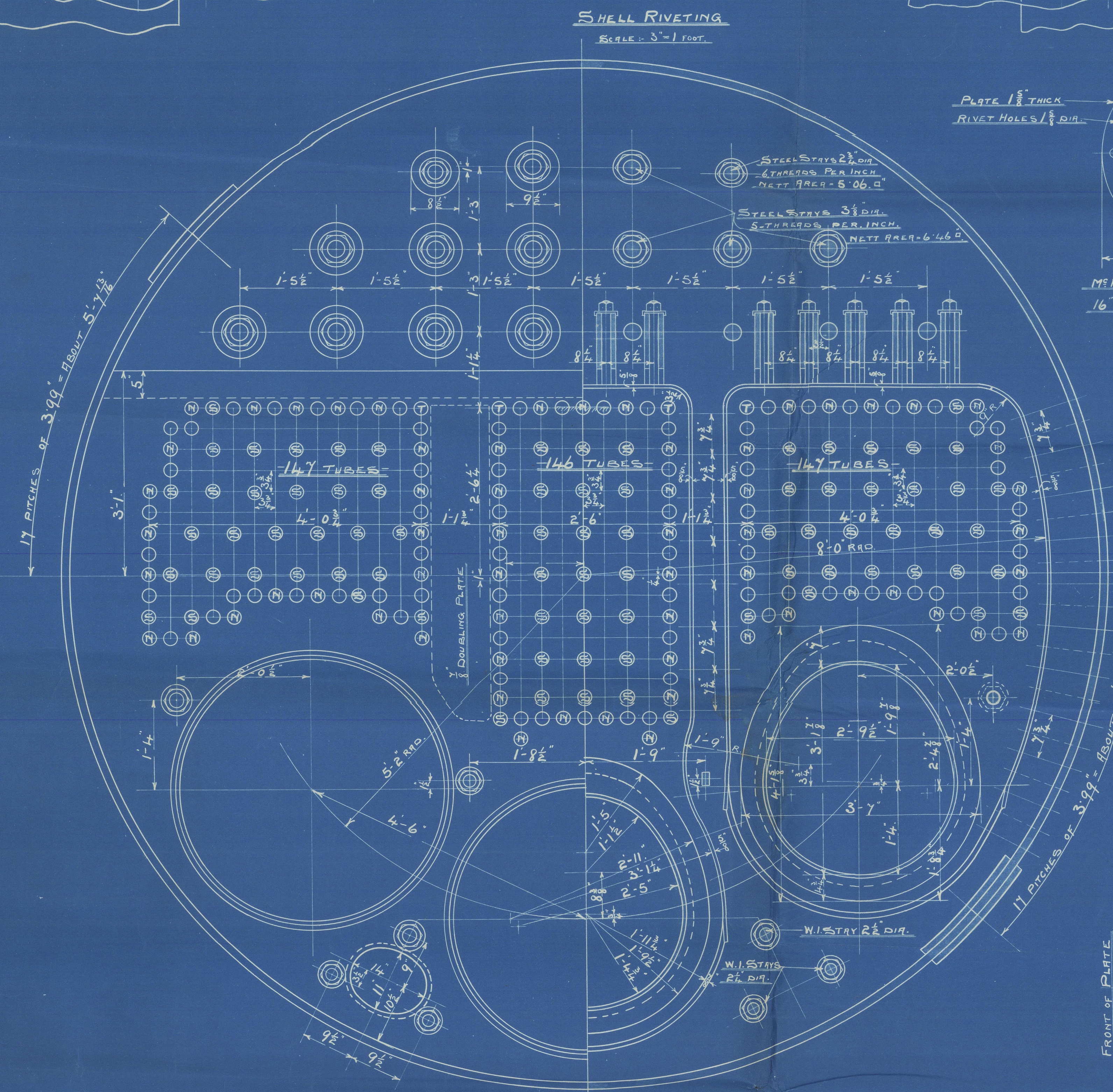
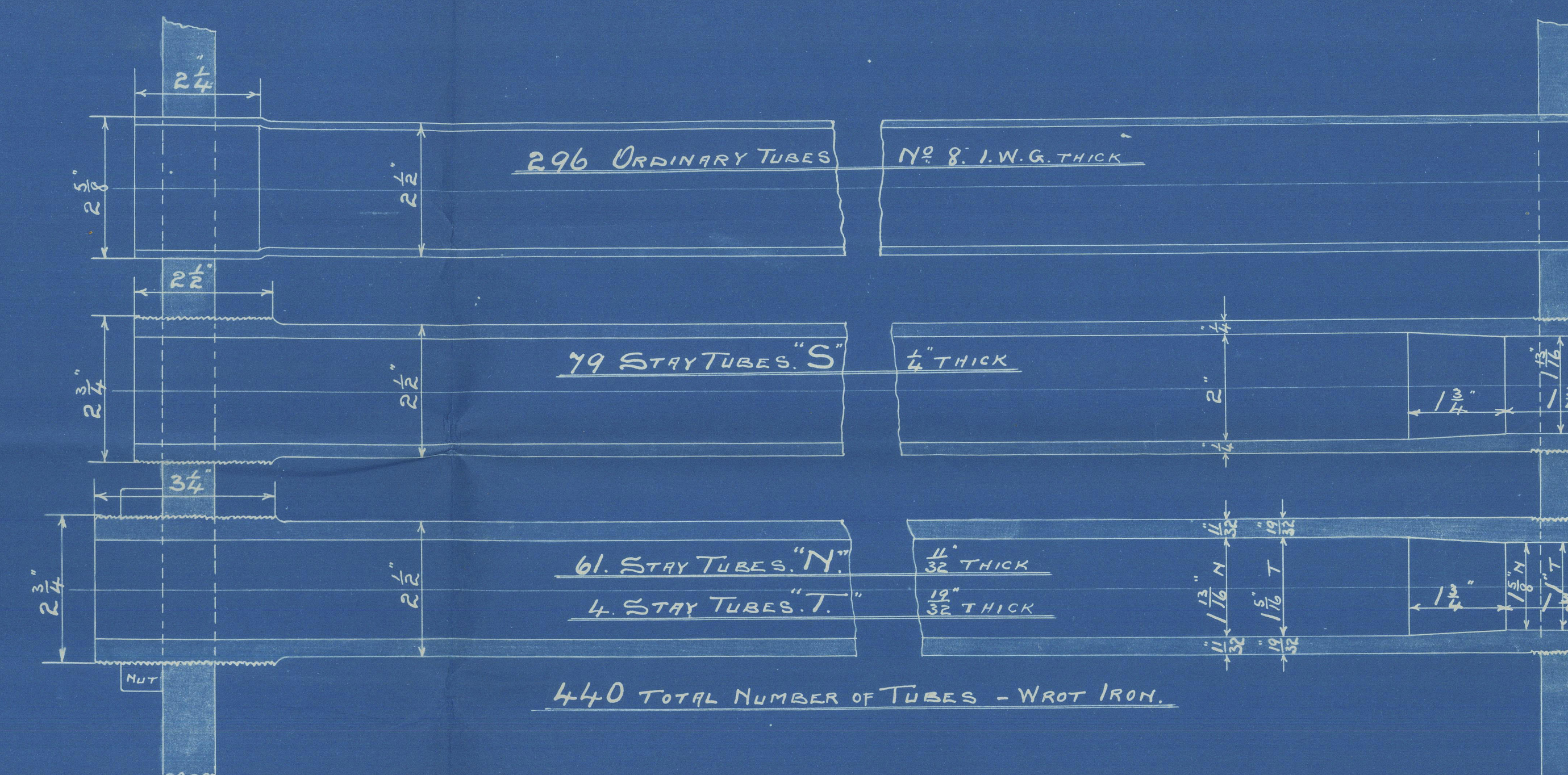


DR N° 7053



6:40:05

HEATING SURFACE	1 BOILER	3 BOILERS
TUBES	2160 f	6480 f
FURNACES	172 "	516 "
COMB. CHAMBERS	232 "	696 "
FRONT TUBE PLATE	31 "	93 "
TOTAL	2595 f	7785 f
GRATE SURFACE		



PARTICULARS OF RIVETING

SHELL	LONGITUDINAL SEAMS - DOUBLE BUTT STRAPS - RIVETED AS SHOWN
	STRENGTH OF PLATE 83.75% STRENGTH OF RIVET 88.5%
	CIRCUMFERENTIAL SEAMS - DOUBLE RIVETED AS SHOWN
END PLATES	LAPPED - DOUBLE RIVETED - 1 1/2\"/>
FURNACES & COMB. CHAMBERS	DOUBLE RIVETED 3\"/>
	ALL PLATES & RIVETS STEEL - ALL HOLES DRILLED IN PLACE
	MINIMUM TENSILE STRENGTH OF SHELL PLATES 29 TONS PER SQ. INCH
	MINIMUM " " " " " " " " 32
	MINIMUM " " " " " " " " BUTT STRAPS 28
	MAXIMUM " " " " " " " " 32

WORKING PRESSURE 215 LBS PER SQ. INCH
TEST 430

MAIN BOILER N° 381

SCALE - 1" = 1 FOOT

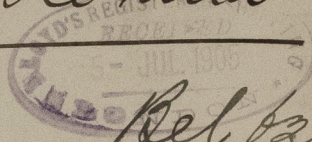
3-OFF

UNDER SURVEY OF BOARD OF TRADE & LLOYDS



Belfast
Harland & Wolff Ltd
T.S.S. 381

P. Eng. Bailens
T.S.S. Kohilla



Bel 6219,

RETAIN

W1572-0066



© 2021

Lloyd's Register