

No 381  
MIDSHIP SECTION  
S.S. 460'x56'x34'-6" [KEEL TO BEAM]

To CLASS 100 A.I. LLOYDS

### 3 DECK RULE

SCALE  $\frac{1}{2}'' = 1 \text{ FOOT}$

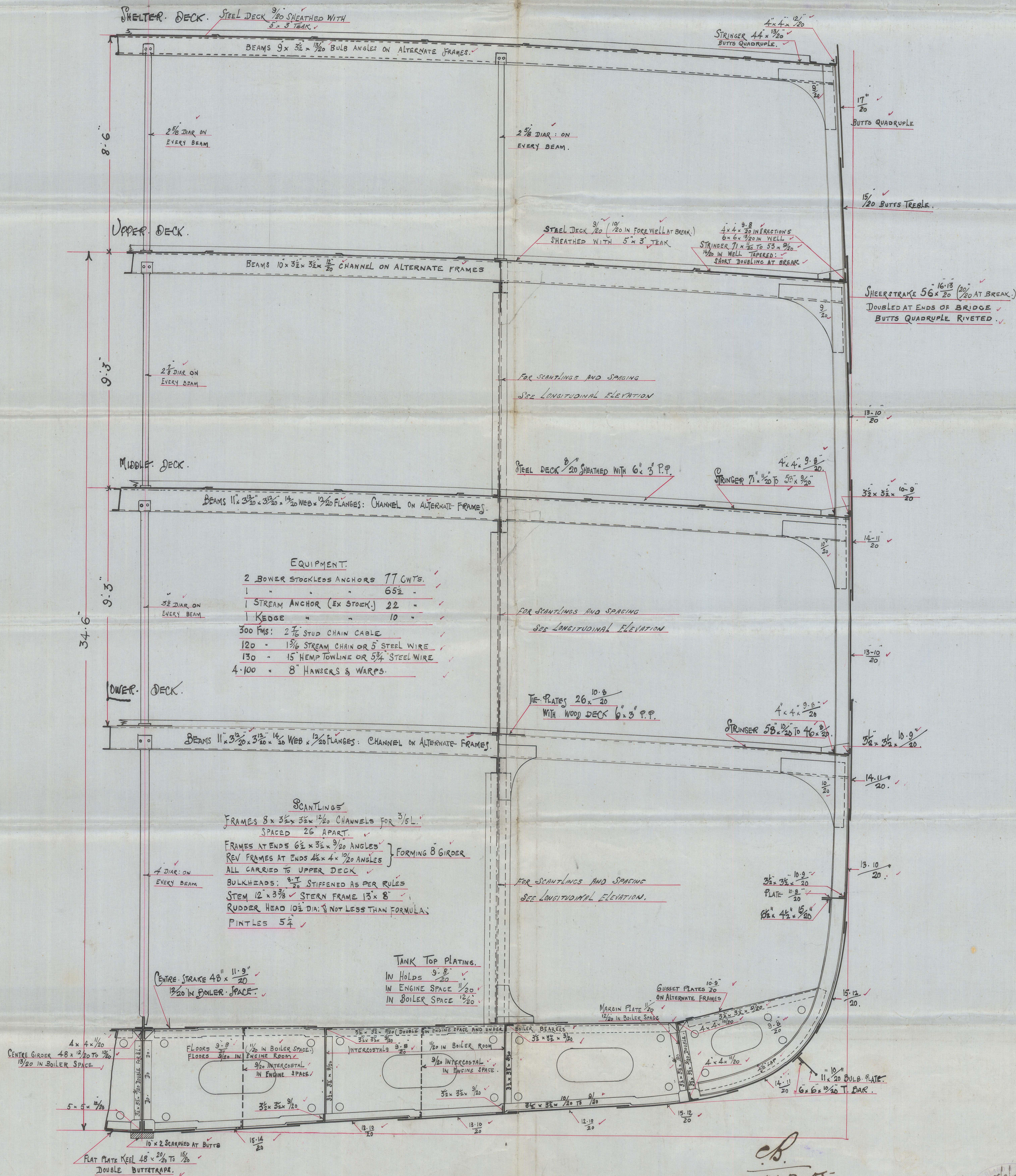
## NUMERALS

$$28 + 57.25 + 34.5 + 33 - 7 = 113.08 \text{ FRAMING NO}$$
$$113.08 \times 457.91 = 51780 \checkmark \text{ PLATING NO}$$
$$120.08 \times 457.91 + 6308.75 = 61294.58 \text{ EQUIPMENT No.}$$

## PROPORTIONS

DEPTH TO LENGTH (UPPER DK) 13.17

BREADTHS TO LENGTH. 8.17.



21.7.05.



Mess<sup>rs</sup> Harland & Wolff & Co  
T.S.S 381

Midship Section showing  
wide spaced pillars and  
girders

~~Not adopted~~  
out

RETAIN

[KEEP TO BEYOND]

© 2021

Lloyd's Register  
Foundation

W1572-0064