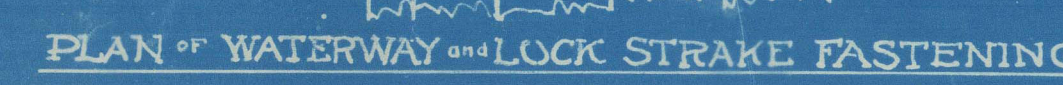


~~Numeral =  $[(47.1 + 26.5) \times 24.5] \cdot 1.15 = 1927$~~ 

1ST BOWER	STOCKLESS	47-2-0 =	5320
2ND "	"	47-2-0 =	5320
3RD "	"	40-1-7 =	4515
STREAM	"	44-1-15 =	1611
KEDGE	"	7-0-26 =	810
CABLE 270 FATH. 2" STUD LINK CHAIN 538-0 6034-0			
STREAM 15 FATH 4" STEEL WIRE.			
TOWLINE 90 FATH 4" WIRE.			
HAWKERS & HARPS 30 FATH of 11" & 30 FATH of 7" MANILA			



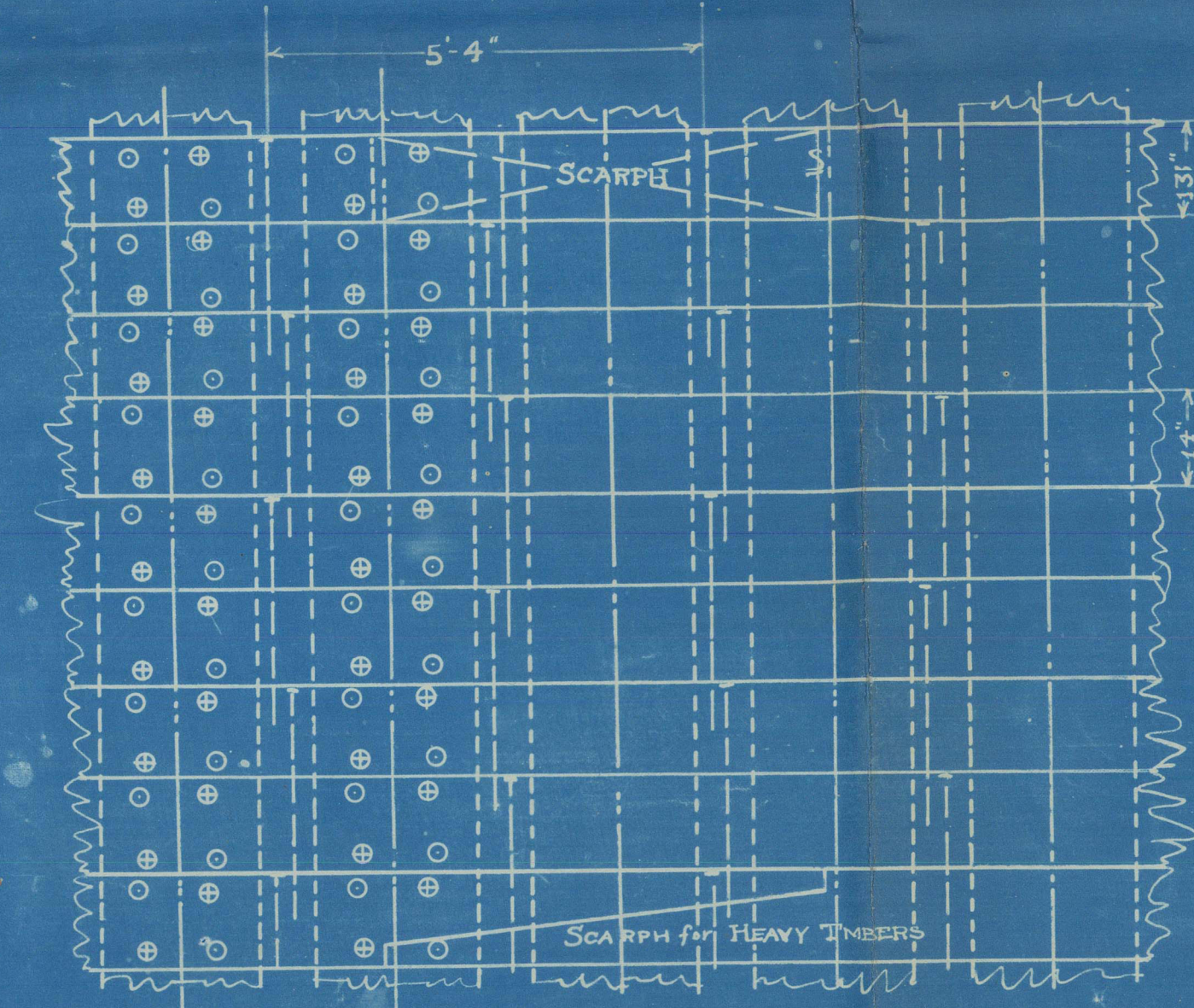
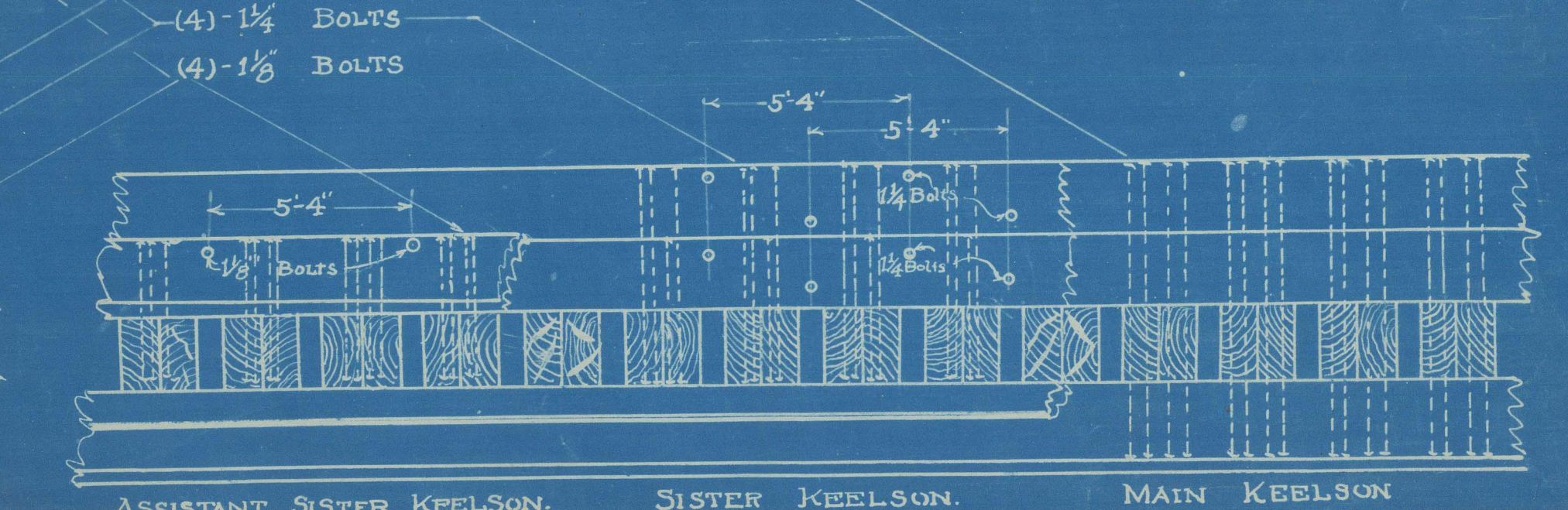
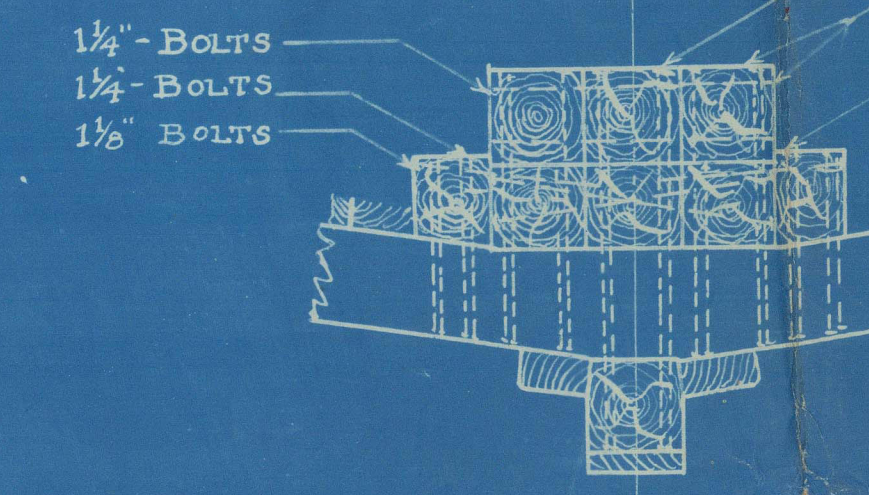
CLINCHED BOLTS AND  
DRIFT BOLTS AT EACH FRAME  
CLINCHED BOLTS UPSET HEADS  
OUTSIDE AND CLINCHED OVER  
RING ON INSIDE.  
DRIFT BOLTS BUTTON HEADS

NOTE-SEE SPECIAL DETAIL  
FOR KEEL & KEELSON FASTENING

(4) -  $\frac{7}{8}$ " DRIFT BOLTS-EACH FRAME  
(4) - 1" DRIFT BOLTS-E

## CONSTRUCTION-SECTION

SCALE  $\frac{1}{2}" = 1'-0"$



BUTTS { ONE STRAKE - THREE FRAMES  
TWO STRAKES - TWO FRAMES  
THREE STRAKES - ONE FRAME  
FOUR STRAKES - SAME FRAME } SEA ABOVE

CEILING FASTENING ARRANGEMENT.

SCALE  $\frac{1}{2}'' = 1'-0''$



Elliott Bay Shipbuilding Co.

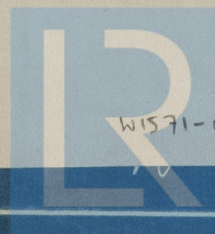
5 masted wood schooner

"Bianca" Yard No. 4

Midship section & fastening plan



RETAIN



© 2021

W1571-0033

Lloyd's Register  
Foundation