

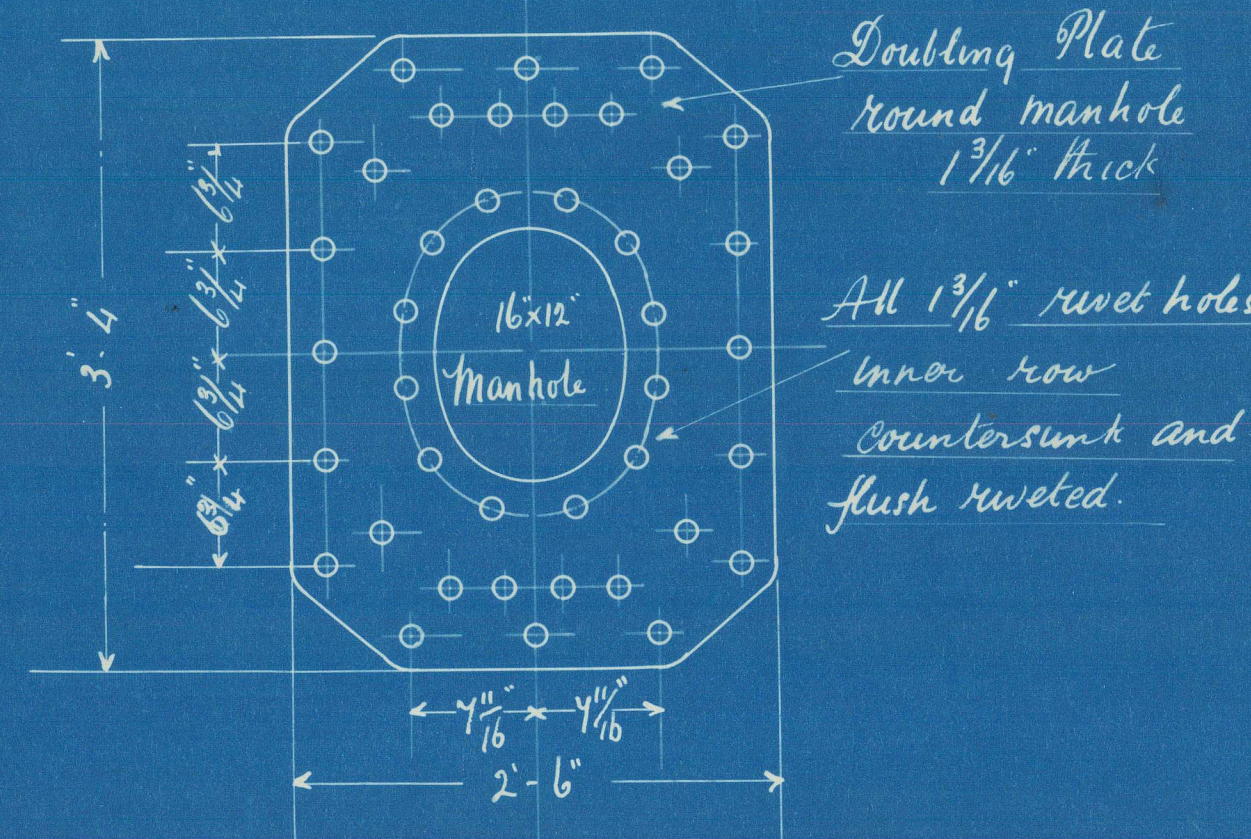
21.11.05.

# STEEL BOILER N<sup>o</sup>520

Working Pressure 200 lbs (Lloyds)

Scale 1" = 1 Foot

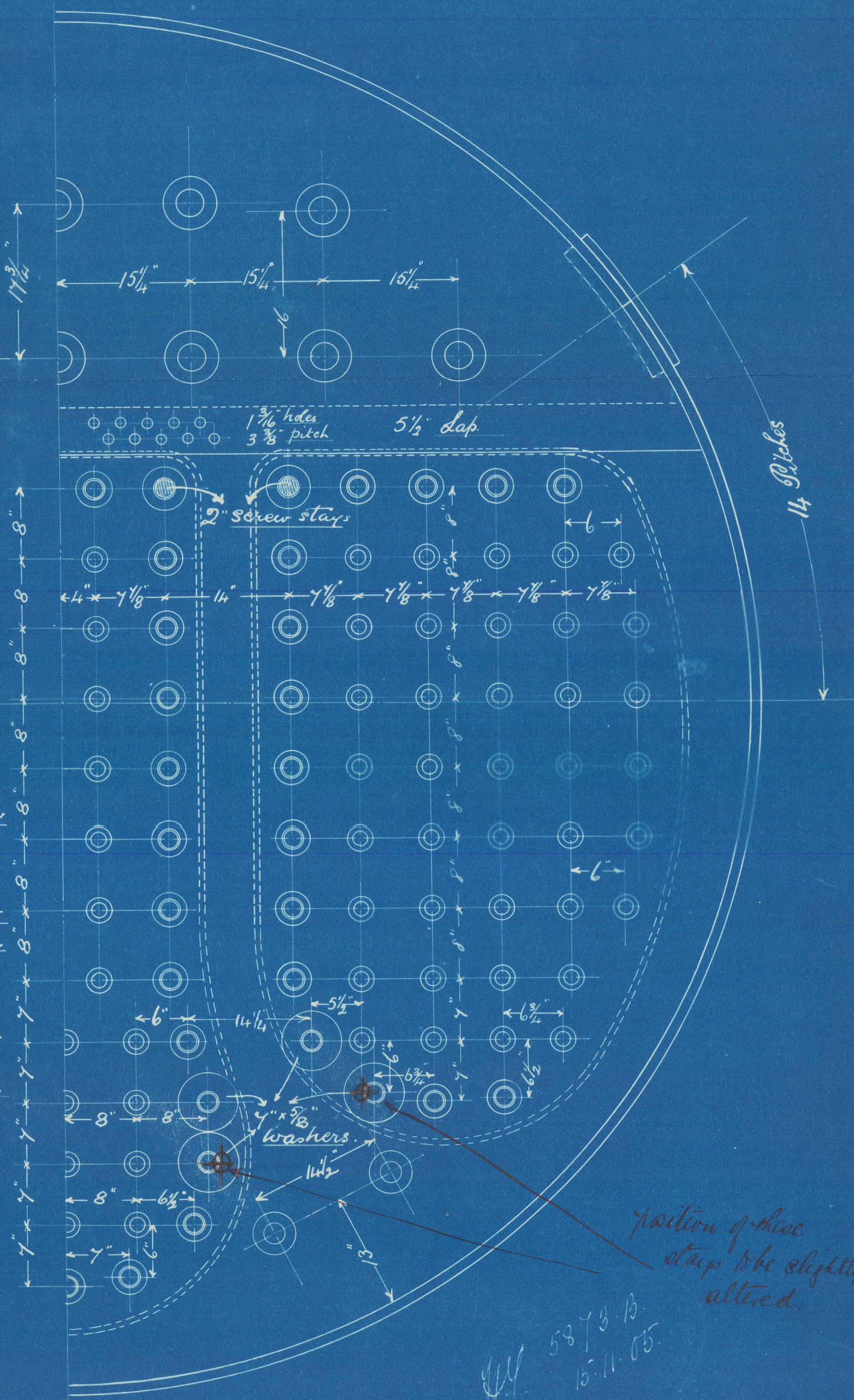
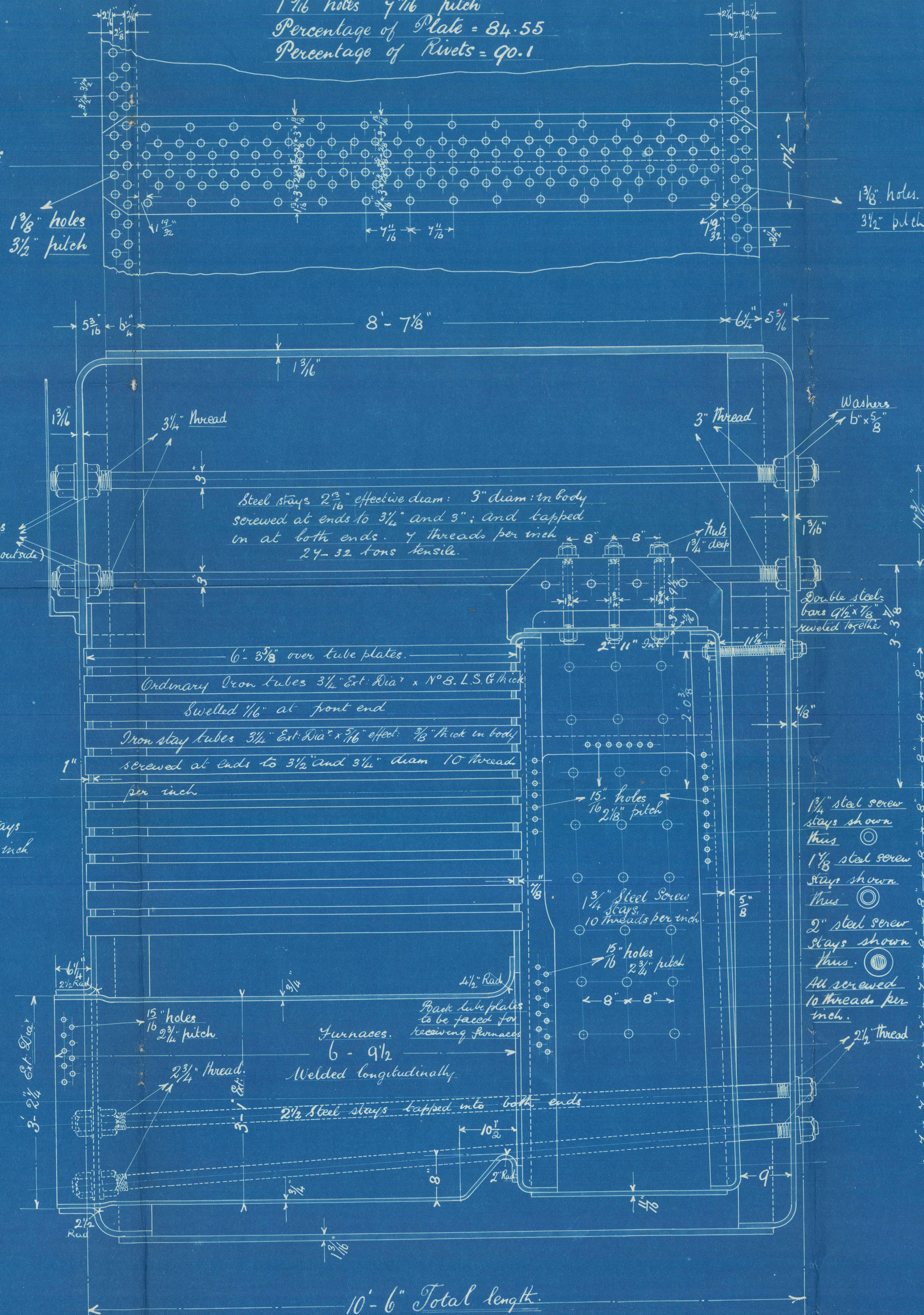
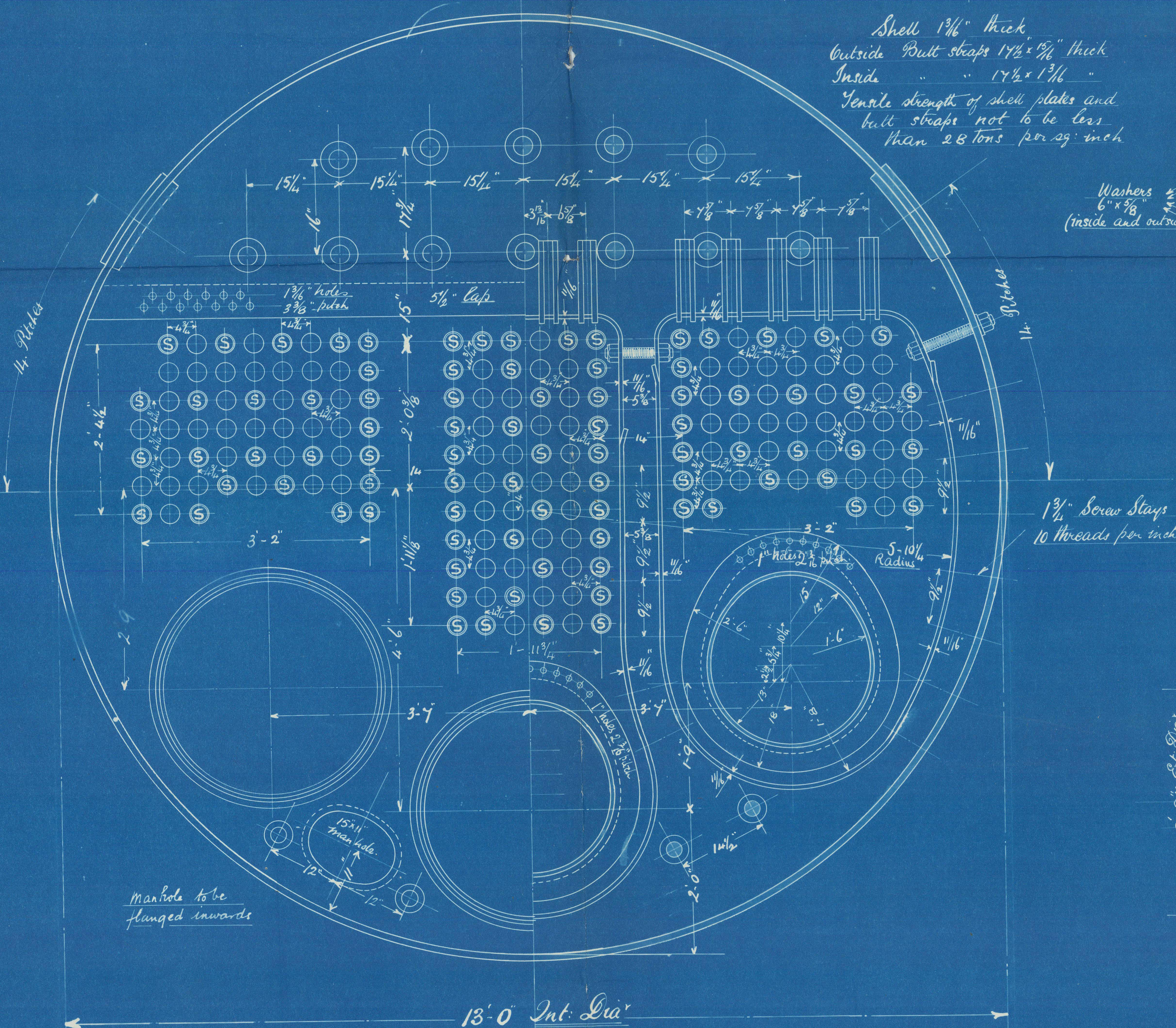
Note. All plates, stays, and rivets to be of Siemens Martin steel. All rivet holes throughout the boiler to be drilled in place after the plates are bent. The screw stays are 1 1/8", 1 1/4", and 1 3/8" effective diam. screwed into both plates and riveted at each end, screwed 10 threads per inch. The tubes are of iron, the ordinary ones are 3 1/4" ext. dia. x N<sup>o</sup> 8 L.S. & thick; the stay tubes are 2 1/2" int. dia. x 5/16" thick effect. screwed at ends to 3 1/2" and 3 1/4" diam. A manhole in shell 16" x 12" with flange and longitudinal and a doubling plate 3' 4" x 2' 6" x 1 1/2" thick fitted round it.



Plan of Shell riveting  
1 3/16" holes 7 1/16" pitch  
Percentage of Plate = 84.55  
Percentage of Rivets = 90.1

## DIMENSIONS

LENGTH OF FIRE BARS	5' 0"
AREA OF FIRE GRATE	44.37 sq ft
DIAM OF TUBES OUTSIDE	3 1/4"
LENGTH OF TUBES	6' 3 3/8"
N <sup>o</sup> OF TUBES	180
AREA THROUGH TUBES	7.35 sq ft
SURFACE OF TUBES	941.25 sq ft
TOTAL HEATING SURFACE	1260 sq ft
WORKING PRESSURE	200 lbs.



N<sup>o</sup> 520

LLOYD'S REGISTER  
OF SHIPPING  
13 NOV 1905  
HULL

EARLE'S  
53/14  
15/11/05  
HULL  
LLOYDS



*George*

RETAIN

*Earle's S & C. G. L<sup>d</sup>*

*- Boiler No 520 -  
200 <sup>lbs</sup>*



*s/s North King  
Hull Report No 17965*



© 2021

Lloyd's Register  
Foundation

WIS67-0071



Lloyds

W1567-0071



© 2021

Lloyd's Register  
Foundation