

10.4.05

NUMERALS.

1/2 GIRTH	18.416
DEPTH	12.5
1/2 BREADTH	10.5
1ST N°	41.416
LENGTH	108.875
2ND N°	4509.167.

N^{os} 81 & 82.
MIDSHIP SECTION
OF TWO
STEEL SCREW FLEETERS

DIMS 110'-0" BP x 21'-0" x 12'-0" MLD

SCALE 1/2" = 1 FT.

TO CLASS 100A1. AT LLOYDS.

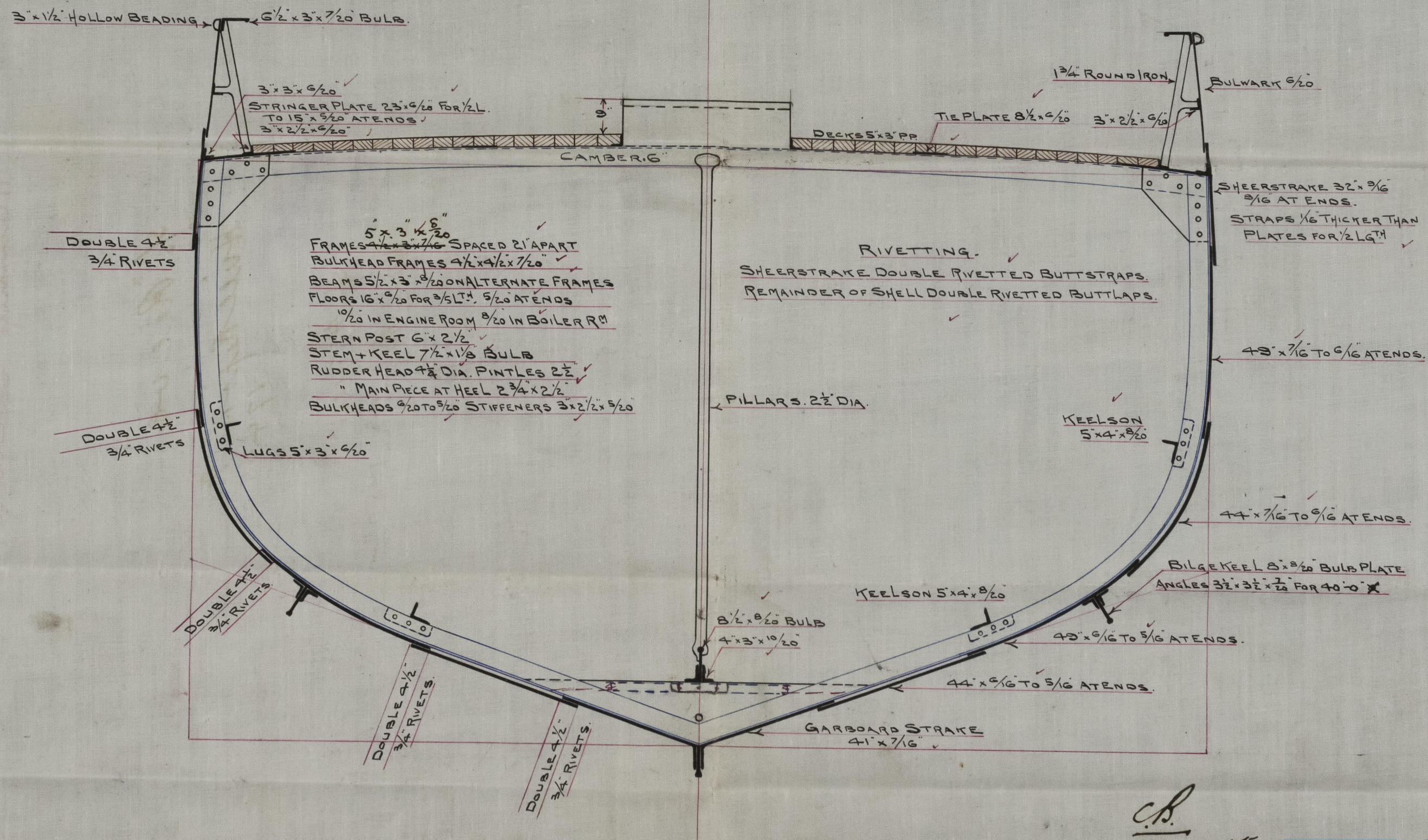
EQUIPMENT N° 4509.

1 ANCHOR	4 3/4 CWTs	EX STOCK.
1 "	4 1/4 "	"
1 "	2 1/2 "	"
30 FATHOMS	15/16" STUD LINK CHAIN	
60 "	5/8" HAWSER	
60 "	4" WARP.	



$\frac{L}{B} = 5.18.$

$\frac{L}{D} = 8.71.$



C.B.
10.4.05.

Book S. & R. C: Ld.

No 81 + 82

Midship Section.

S/S Reeve

Hull Report No.
17405

S/S Reeve

Hull Report No. 17502

W1565-0140



© 2021

Lloyd's Register
Foundation

RETAIN

© 2021

Lloyd's Register
Foundation