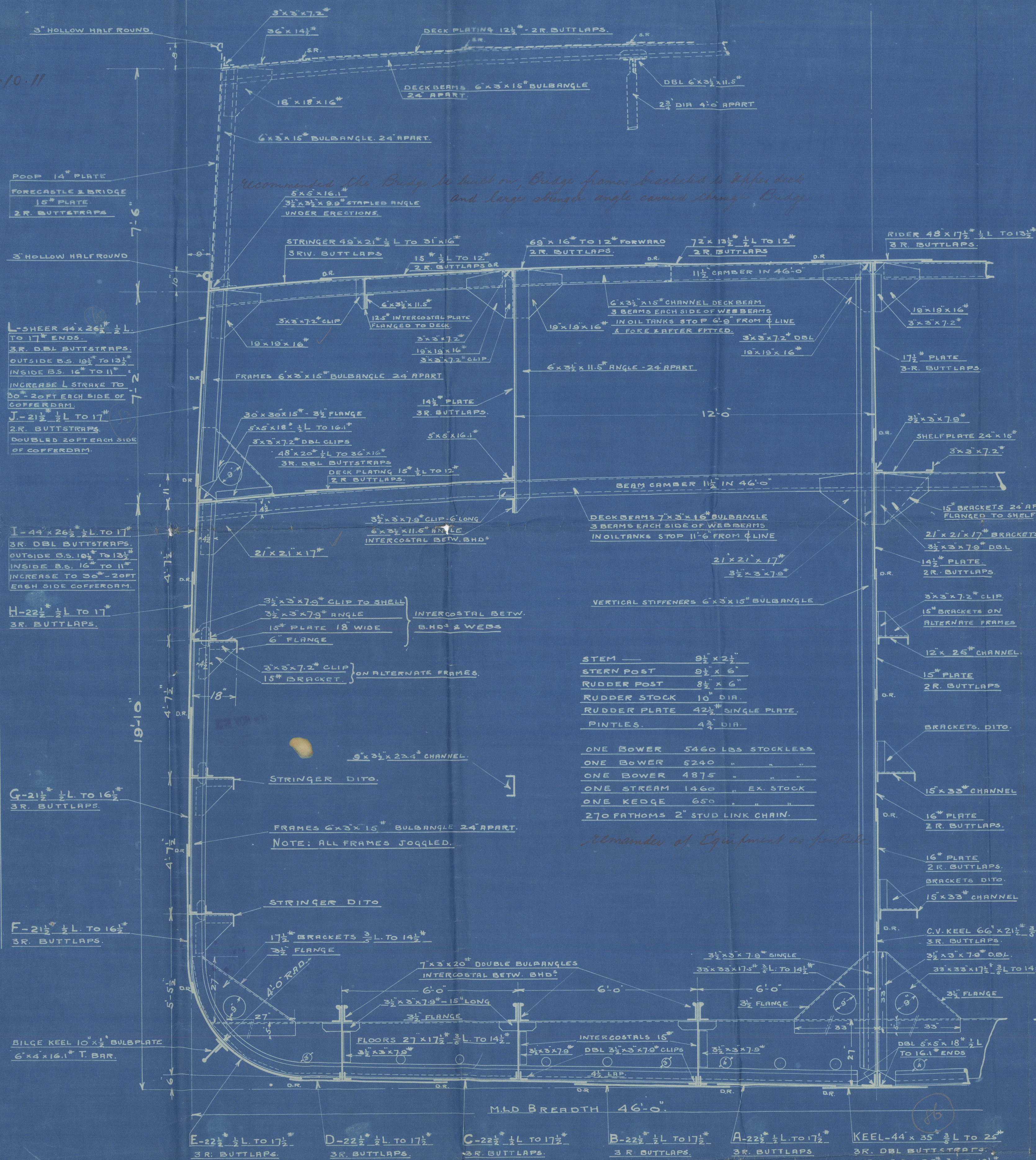
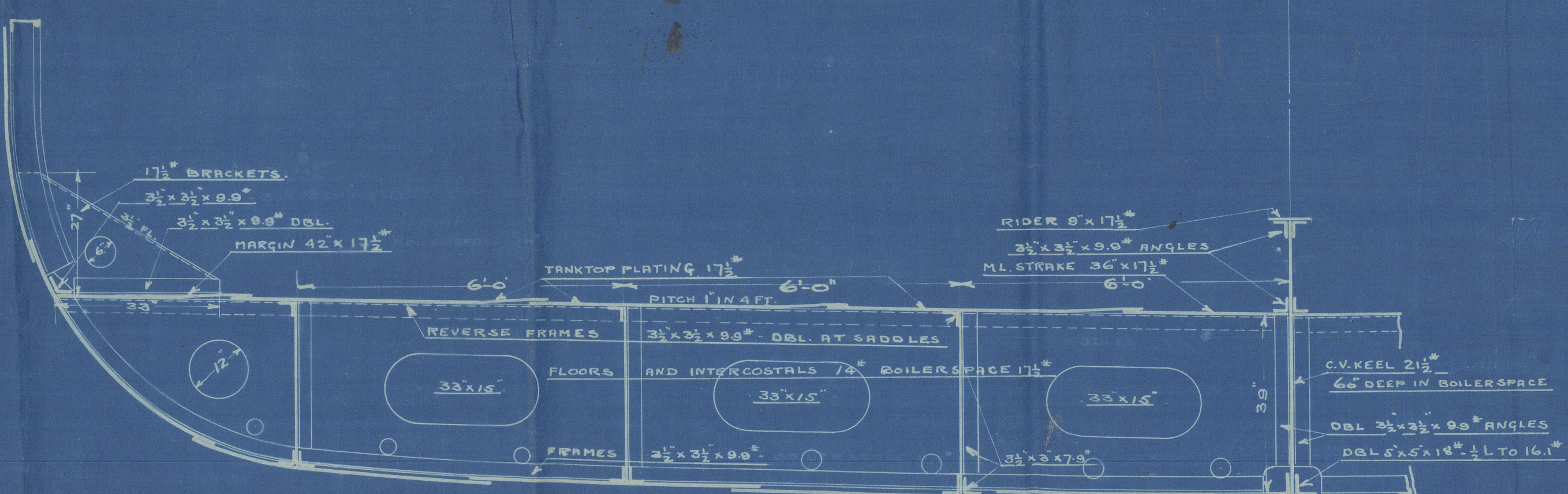


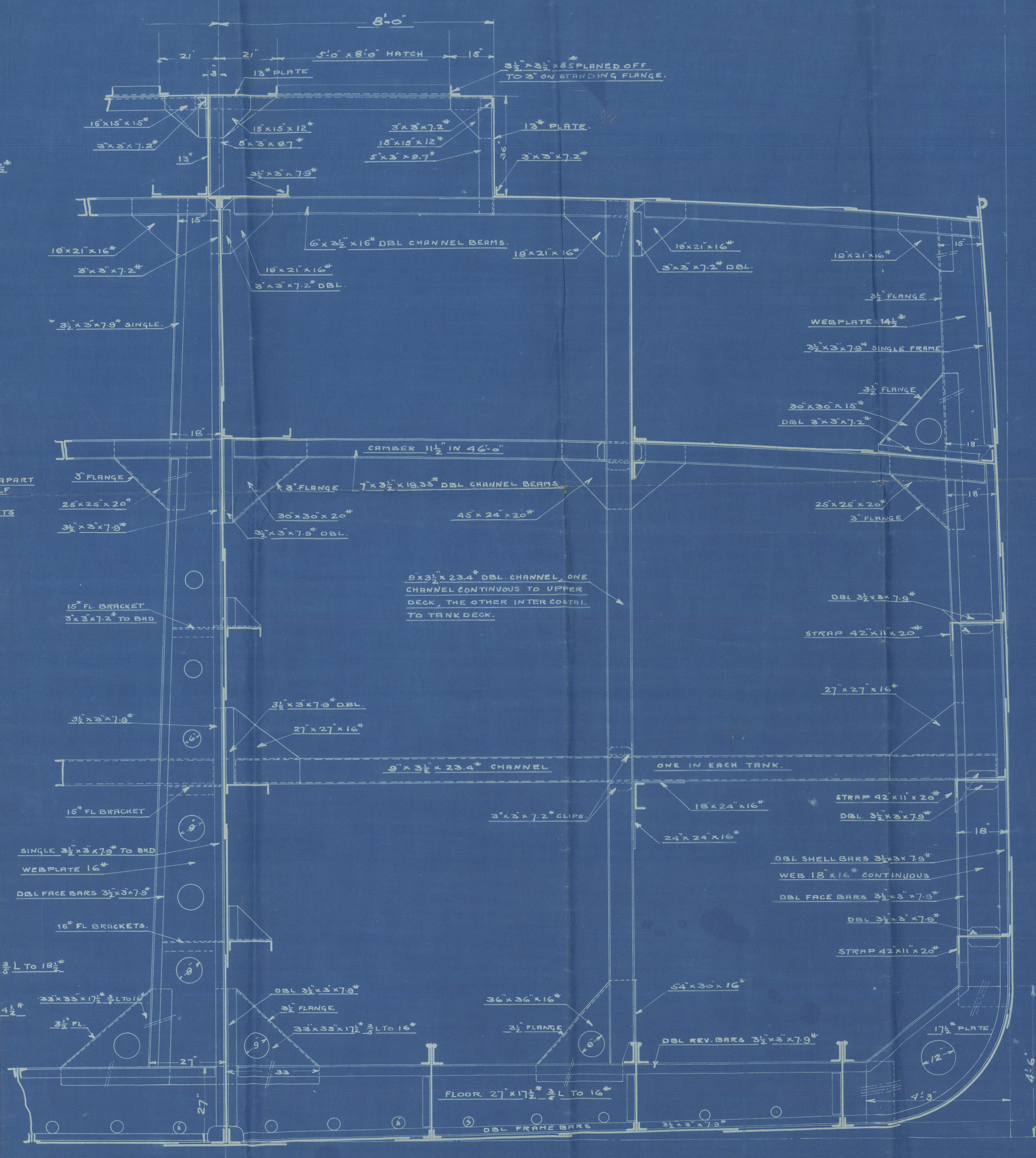
31-10-11



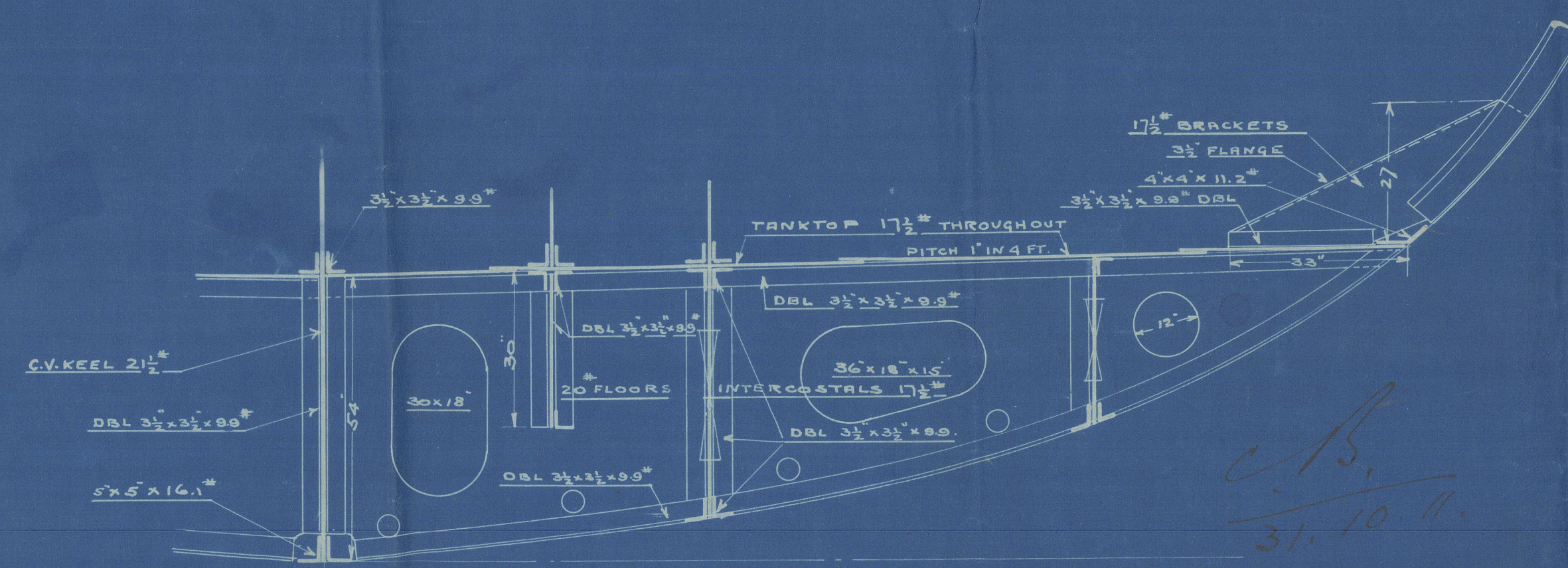
— MIDSHIP SECTION. —



— SECTION OF DOUBLE BOTTOM IN BUNKER & BOILERSPACE. —



— SECTION AT WEBFRAME. —



— SECTION OF DOUBLE BOTTOM IN ENGINE SPACE. —

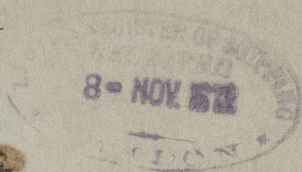
- N^o 123 -

Approved & Sent on from
London

New York Shipbuilding Co
Camden N.J.

PHILADELPHIA.

"S. S. Rayo"



M/S

RETAIN



© 2020

Lloyd's Register
Foundation

W1564-0054