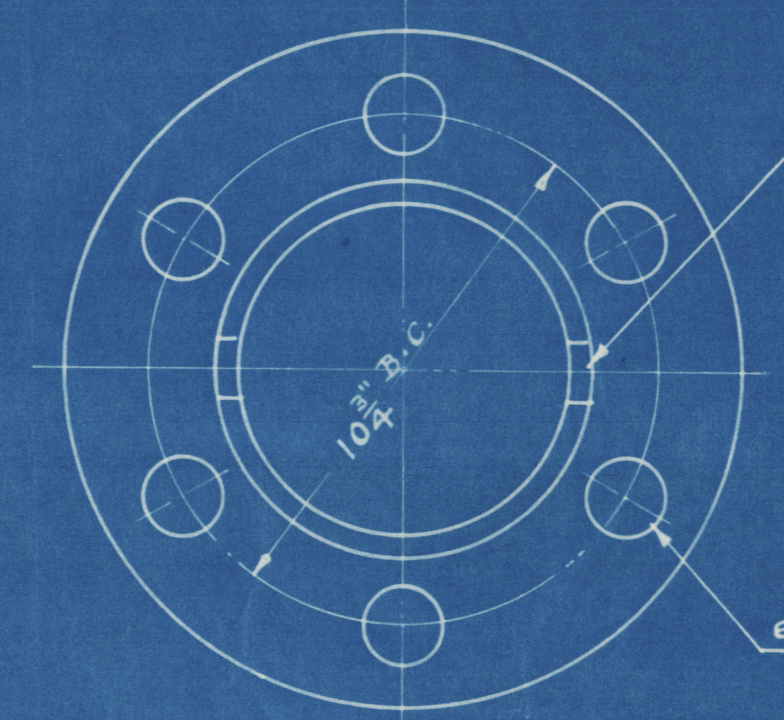
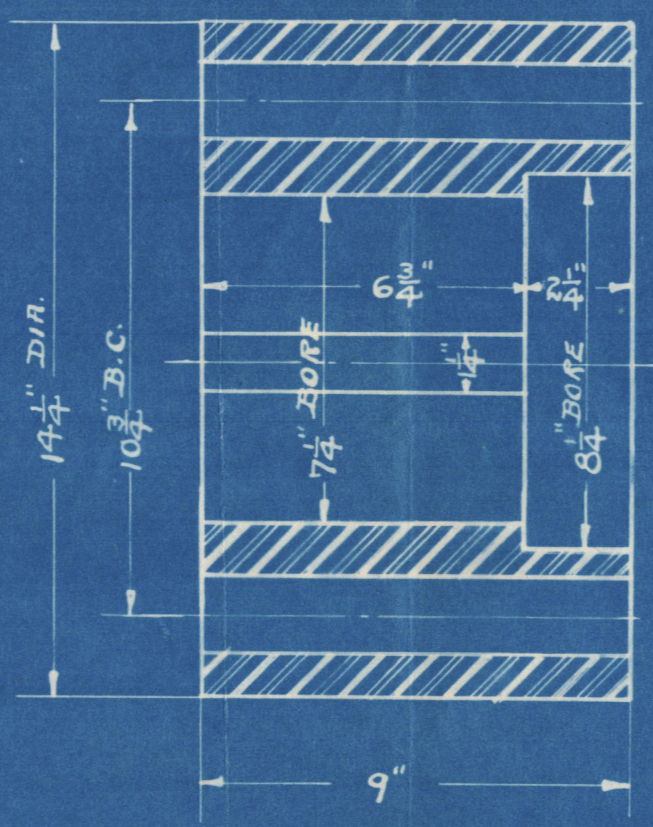


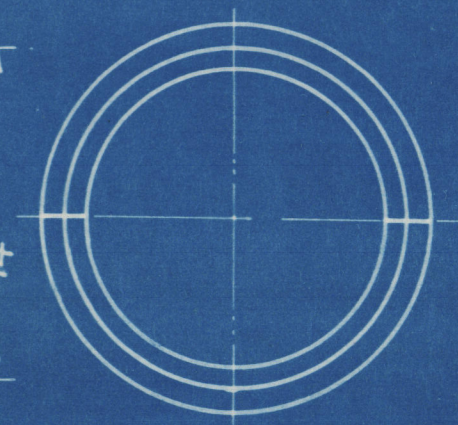
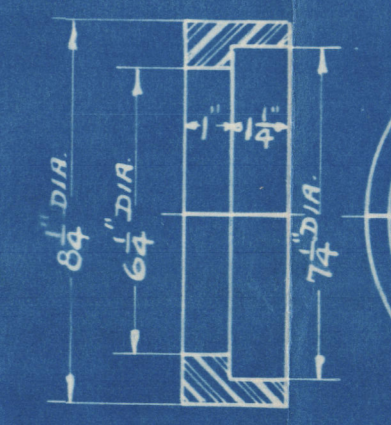
Prop dia & length  
greater than 4'10"

stem lsh. (heavy) to be 2'-5" long  
ends & be tapered at ends.



1 1/2" KEYWAYS 3/16" DEEP

6-1 5/8" REAMED HOLES



TAIL & THRUST SHAFTS FOR  
15-30 X 18" F.A.C. MARINE ENGINE

MARINE IRON WORKS  
CHICAGO U.S.A.  
SCALE 1/8" = 1'-0" OCT-24-1921

Approved  
LLOYD'S REGISTER OF SHIPPING  
NEW YORK  
OCT 27 1921

W1556-0048

N-214

Sail & Thruer Shafts

Vinyard S.B. Co. Hull N<sup>o</sup> 60

so,

Phil Rpt N<sup>o</sup> 4389

RETAIN



© 2020

Lloyd's Register  
Foundation

W1556-0048