

EXPAND TUBES MARKED "S"
IN THIS MANNER.

AREA OF SEGMENT = 2050"

INSIDE BUTTSTRAP $\frac{1}{16}$ " OUTSIDE BUTTSTRAP $\frac{3}{4}$ "

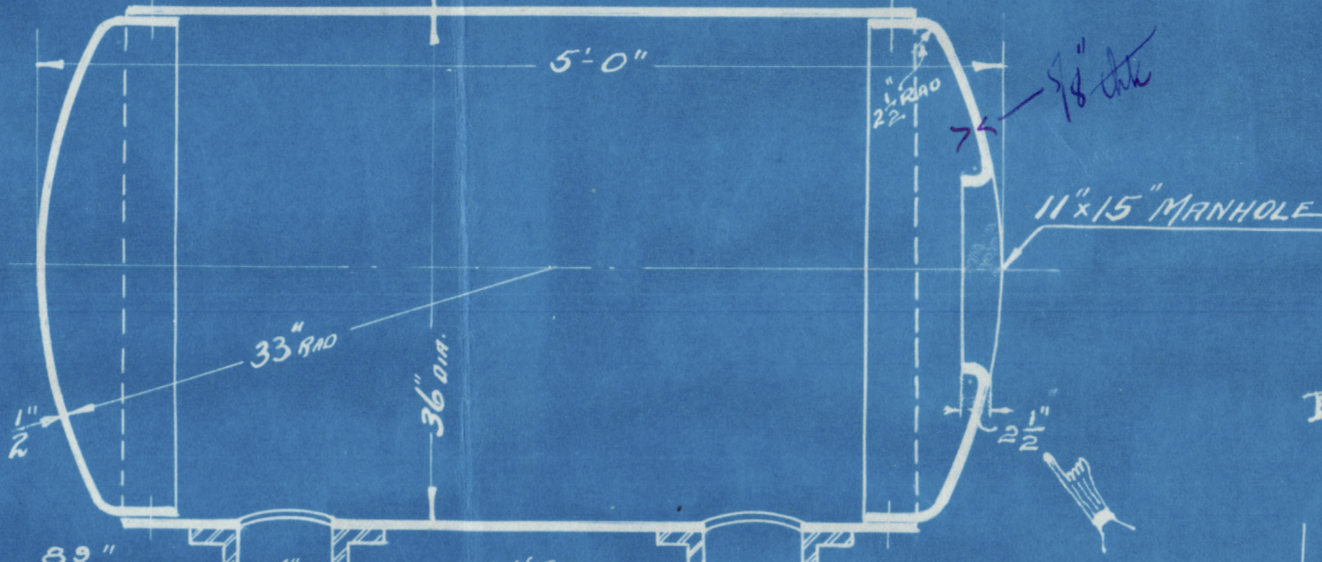
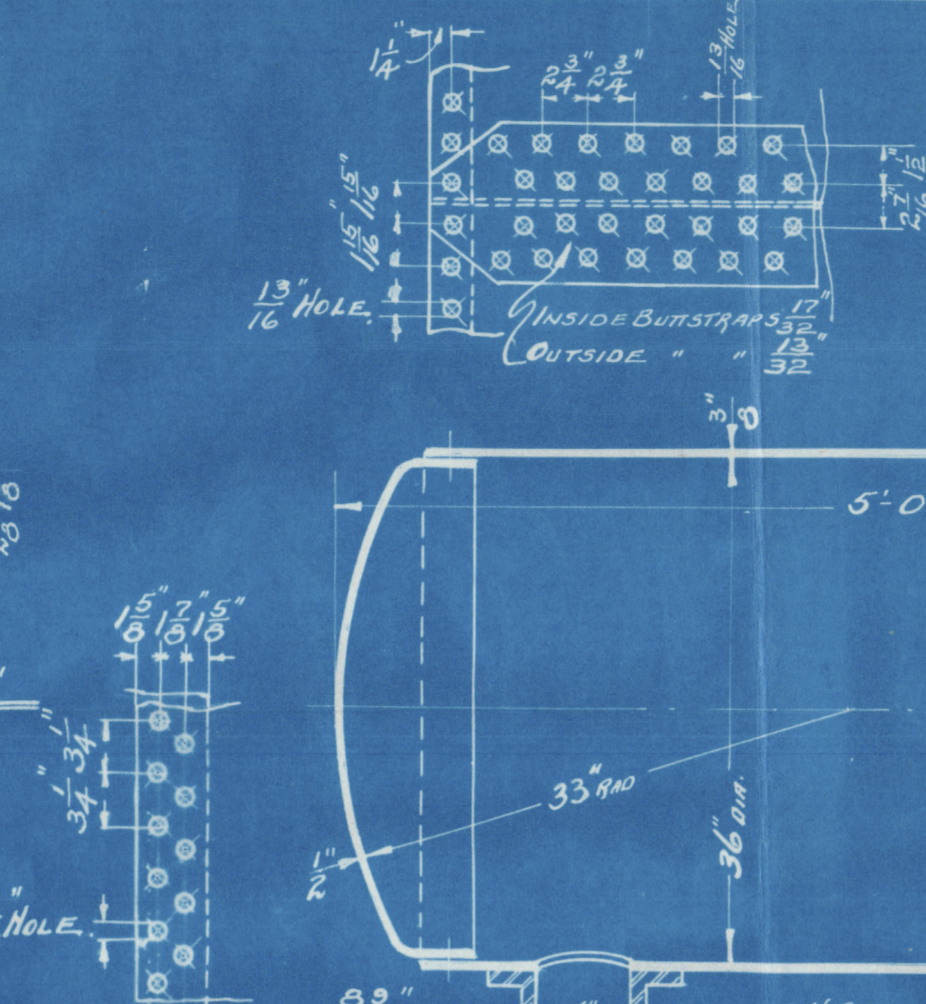
REINFORCING PLATE RIVETED ON IN ACCORDANCE
WITH RULE 11-SECT 18

REINFORCING PLATE $\frac{5}{16}$ "

TOTAL THICKNESS $\frac{5}{16}$ "

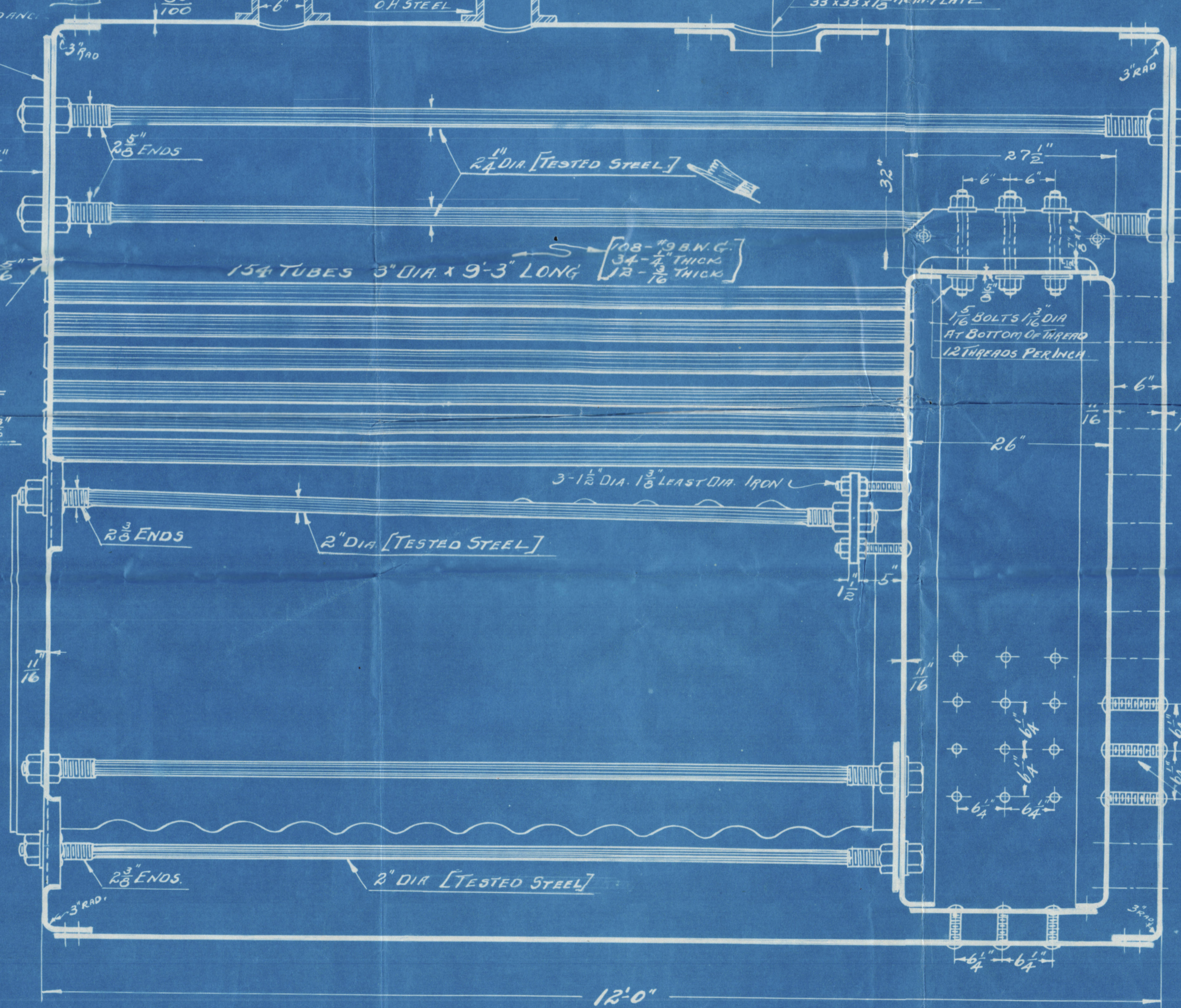
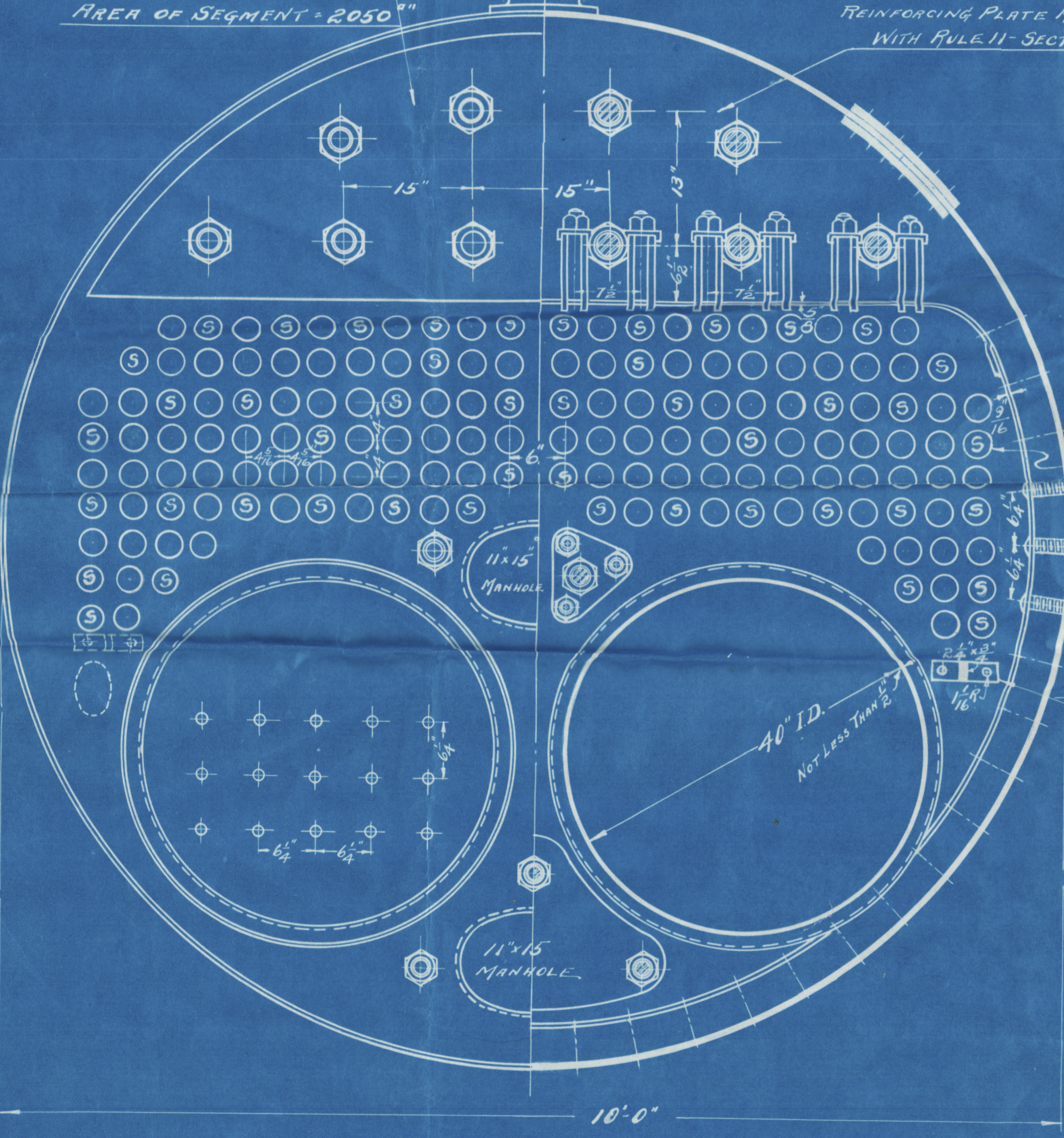
BOUNDING ROWS OF
STAYTUBES $\frac{1}{4}$ " THICK
OTHER STAYTUBES $\frac{3}{16}$ "

$2\frac{1}{2} \times \frac{3}{4}$ BRACE FRONT
HEAD TO TUBE SHEET.

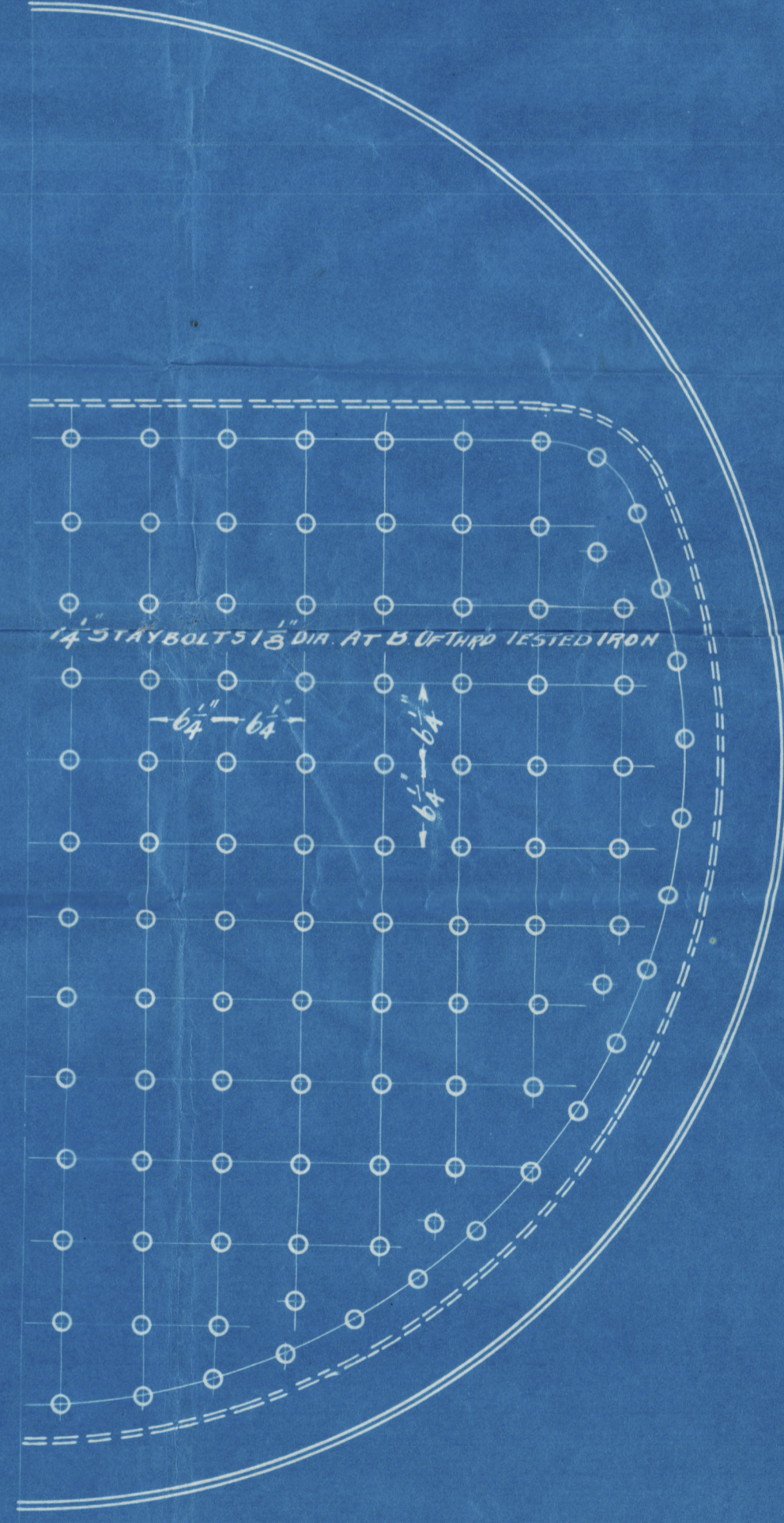


US MARINE RULES			LLOYD'S REGISTER		
SHELL	.89 x 60000	= 173	211724-27842	120	= 180
PLATES ON UPPER SEGMENT	200 x 13.68	= 189	240110 + $\frac{2}{3}$	225	= 199
RIGHTMOST PLATE IN STAYED SEGMENT	120 x 25	= 222	100 x 8.5	6.25	= 184
COMBUSTION CHAMBER CROWN	135 x 9	= 237	135 x 9	46.125	= 237
COMBUSTION CHAMBER TUBE SHEET	43125-27821-625-27000	= 220	10852 x 7 x 175	26-61 x 75 x 26	= 225
CROWN GRADE 45	3.25 x 7 x 175	= 199	1353 x 7500	7.5 x 6	= 225
SCREEN STAYS TOP OF COMB CHAMBER	1353 x 7500	= 225	3.976 x 9000	15 x 13	= 183
MINI STAYS	3.976 x 9000	= 183	.966 x 7500	6.25	= 185
SCREEN STAYS	.966 x 7500	= 185	1259 x 1825-27	44	= 178.8
COMBUSTION CHAMBER FRAMING	15600 x 515	= 191			

THE ABOVE FIGURES WERE MADE BEFORE PAINT WAS APPLIED



$\frac{1}{4}$ " STAYBOLTS $\frac{1}{8}$ " DIA AT BOTTOM OF TUBESHEET-11 TUBES
2.1 INCH WITH $\frac{1}{8}$ " HOLE DRILLED $\frac{1}{2}$ " BEYOND INSIDE SURFACE OF PLATE
TESTED IRON.



KINGSFORD FOUNDRY & MACHINE WORKS
OSWEGO, N.Y.

10'-0" x 12'-0" SCOTCH MARINE BOILER

BUILT FOR

YARD # 60.

PRESSURE 175#

HULL # 60

TS OF PLATE 60000#
RIVETS MILD STEEL.
DRILLED HOLES.

1 1/2 + 5'0"
SCALE 1" = 1'0"
8-31-21

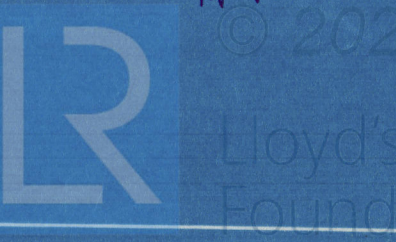
EST. EVAPORATION 220# PER "OF G.S.
GRATE SURFACE - 47"
COMBINED AREA OF TWO SAFETY VALVE REG. - 11.83

4005

VINYARD SHIP BLDG CO. MILFORD DEL.

HEATING SURFACE 1330"

SURVEYOR'S COPY



W1556-0047

Main Books
Vinyard S.B.C. Hull N° 60

to
The Rev N° 4389

RETAIN



© 2020

Lloyd's Register
Foundation

W1556-0047

No 462
LLOYD'S TEST
3/3 LBS
W.P. 17⁵ LBS
29.12.21 TGD

E400-9551M

HEATING SUPPLY 1390



© 2020

Lloyd's Register
Foundation