

MIDSHIP SECTION

— ANCHORS & CHAINS. —

ONE ANCHOR 5 ³/₄ CNT. EX. STOCK.

0 " 5 1/4 " " "

1 11 3 ✓ 11 . 11

105 FATHOMS $1\frac{1}{16}$ CHAIN

60 " 6" HANSEN

60 " 5 WARP

S.S. ~~344~~. 23

DIMENSIONS 130'-0" x 22'-0" x 12'-1" DEPTH OF HOLD

SCALE $\frac{1}{2} = 1$ FOOT

STEEL

— CLASS 100 A.1. —

FOR FISHING PURPOSES

LLOYDS NUMERALS

1/2 GIRTH 20.08

1/2 BREATH 10-91

DEPTH 13.29

44-281STN^O

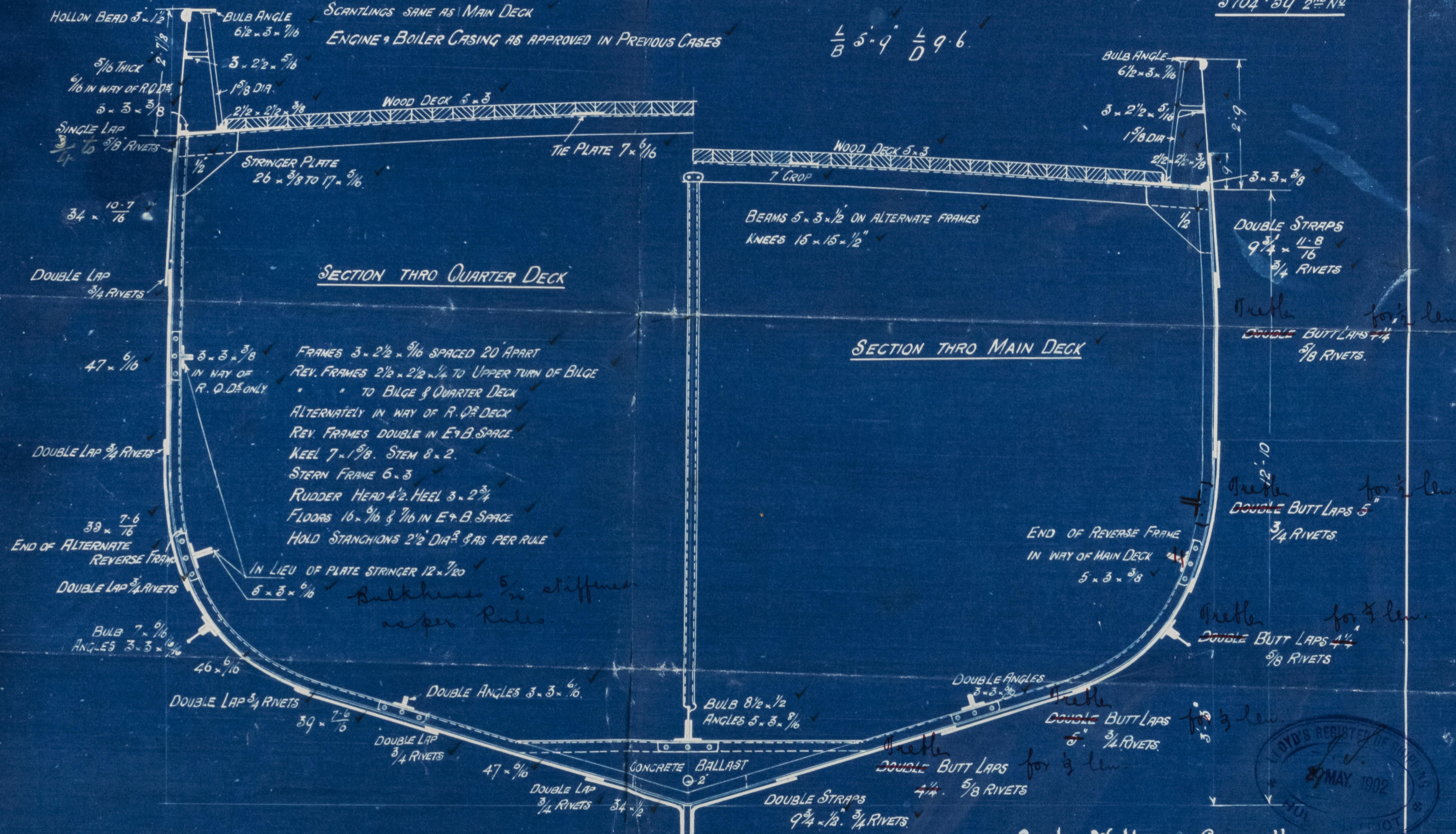
LLOYDS LENGTH 128.83

5704-59 2ND N^o

RAISED QUARTER DECK 52'-8 LONG x 12'

SCANTLINGS SAME AS MAIN DECK

ENGINE & BOILER CASING AS APPROVED IN PREVIOUS CASES

$$\frac{L}{B} 5.9 \quad \frac{L}{D} 9.6$$


Cook, Welton & Semmell,

Shipbuilders

HULL

Null

books

No. ~~3444~~ 23



*s/ Penicles
Hall Report No. 15232*



m/s

REMAIN

W1555-0180



© 2021

Lloyd's Register
Foundation