

N^{OS} 1004 & 1006 - MIDSHIP SECTION

SCALE $\frac{1}{2}$ " = ONE FOOT.

TO CLASS "A1" AT LLOYD'S "FOR SPECIAL SERVICE"

LENGTH PP. 255' 9"

BREADTH MLD. 33' 6"

DEPTH (MLD) TO UPPER D^S 18' 0"

EQUIPMENT

2 STOCKLESS BOWER ANCHORS EACH 22 CWTs.

1 KEDGE ANCHOR 5 - EX STOCK.

200 FATHOMS $\frac{1}{4}$ " STUD LINK CABLE.

150 - $\frac{3}{8}$ " STEEL WIRE ROPE.

ALL MIDSHIP SCANTLINGS ARE FOR
LENGTH AMIDSHIPS AND THENCE GRADUALLY
REDUCED TO END SCANTLINGS.

LLOYD'S NUMERALS.

B = 33.50

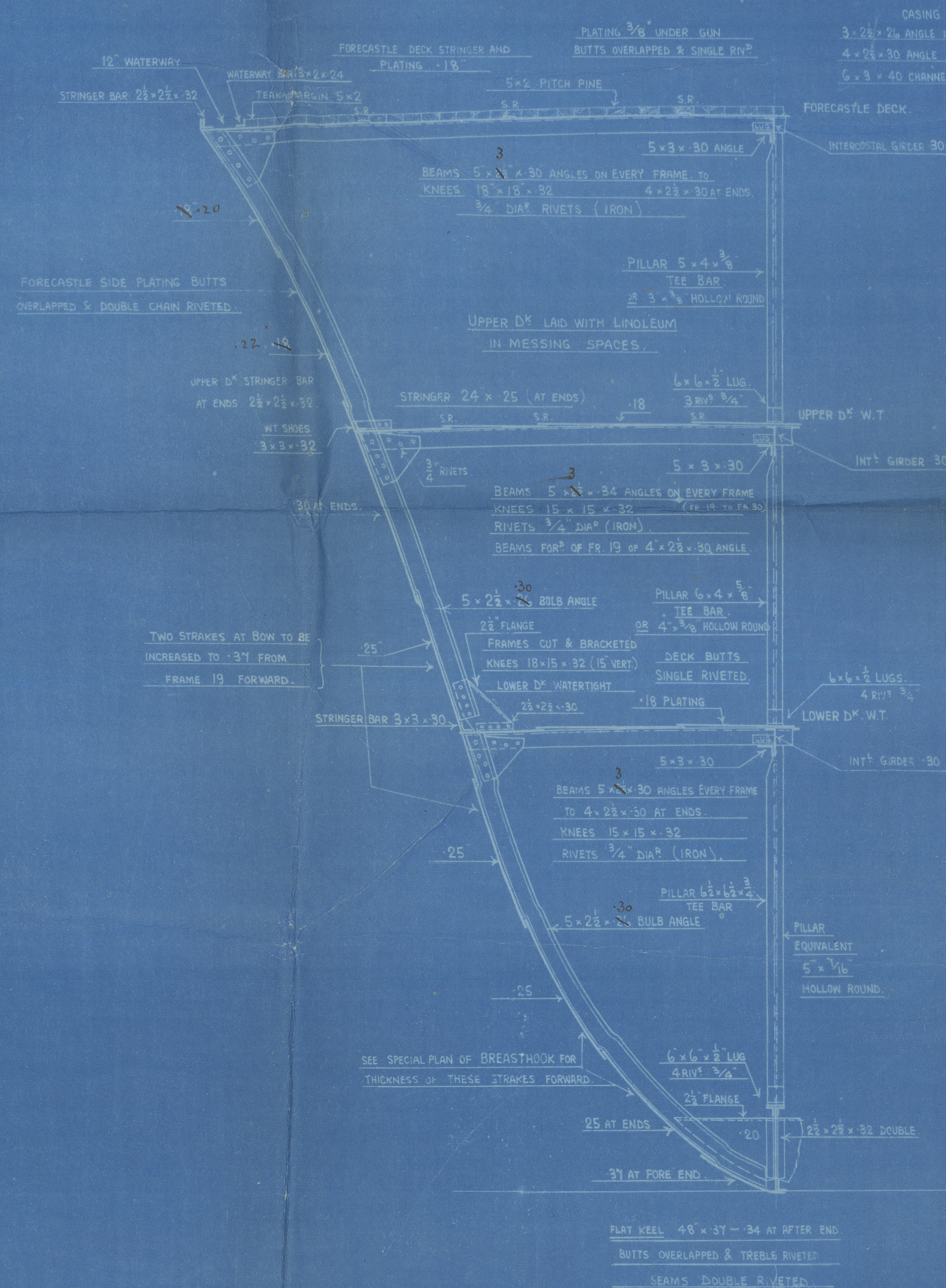
D = 18.00

B + D = 51.50 TRANSVERSE No.

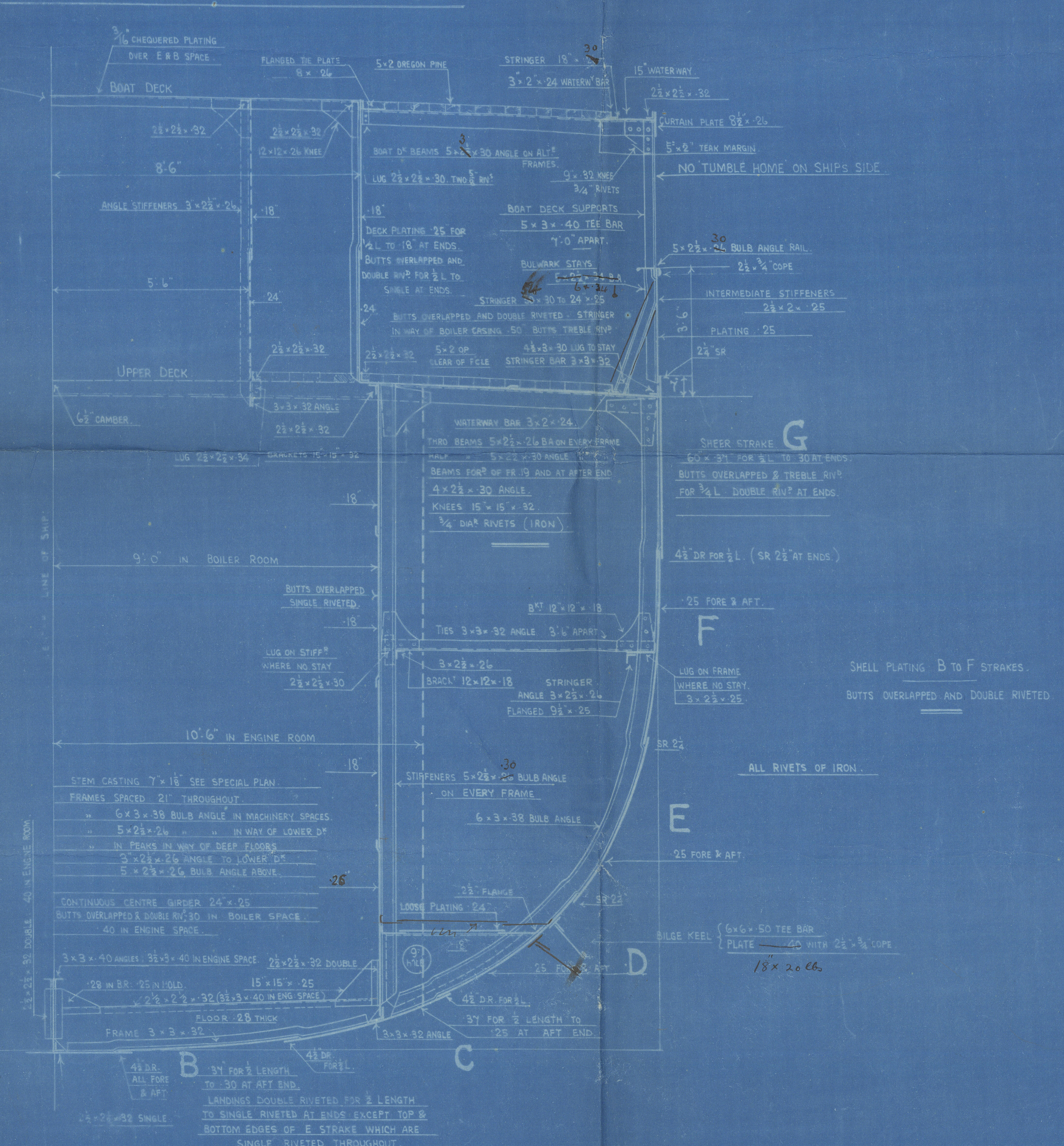
LENGTH $96\% (255.25 + 12.5) = 257.04$

L(B + D) = 13237.56 LONGITUDINAL No.

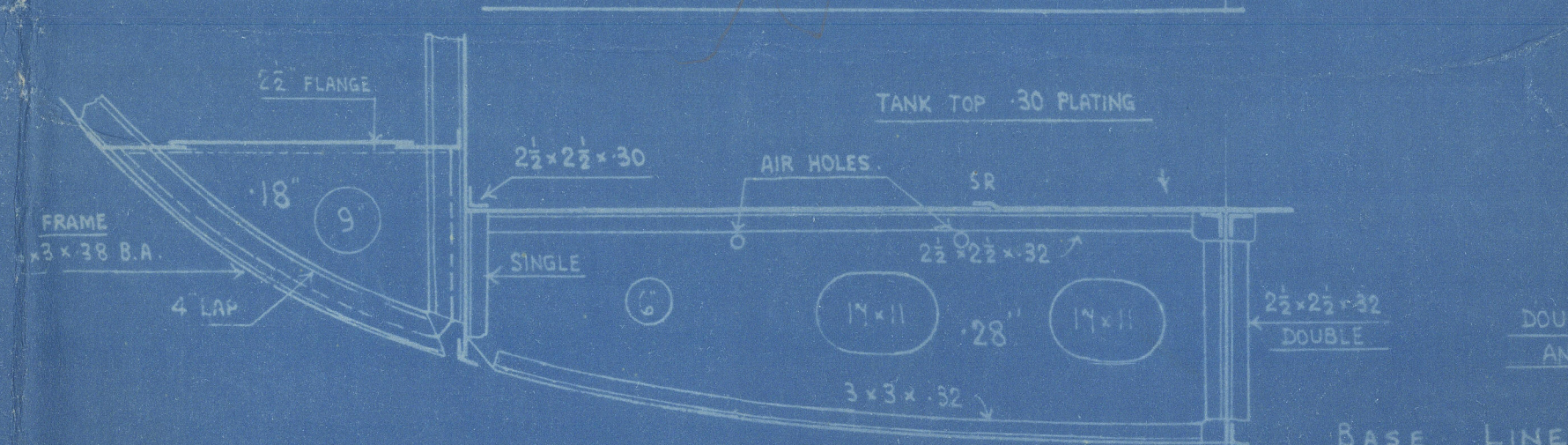
SECTION FORWARD



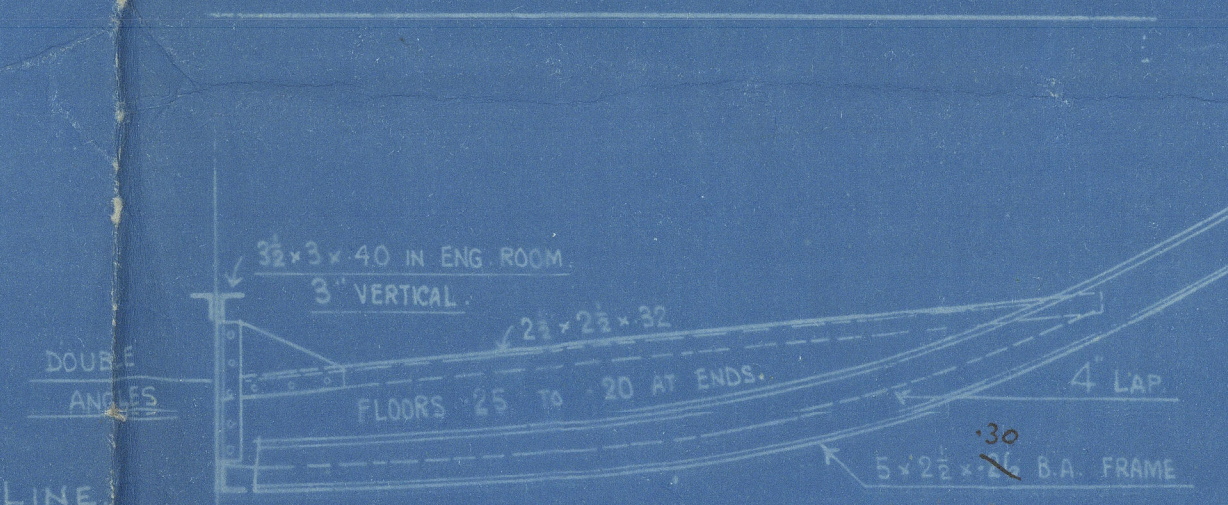
SECTION THRO BOILER ROOM



SECTION THRO RESERVE FEED TANKS



SECTION CLEAR OF ENGINE & BOILER SPACE



RETAIN

Wookman Clark & Co
H. M. Sloops

No 266 & 367
Pentstemon 366 Petunia 367

Midship Section

Rel. 7656.



© 2021

Lloyd's Register
Foundation

W1553-0109