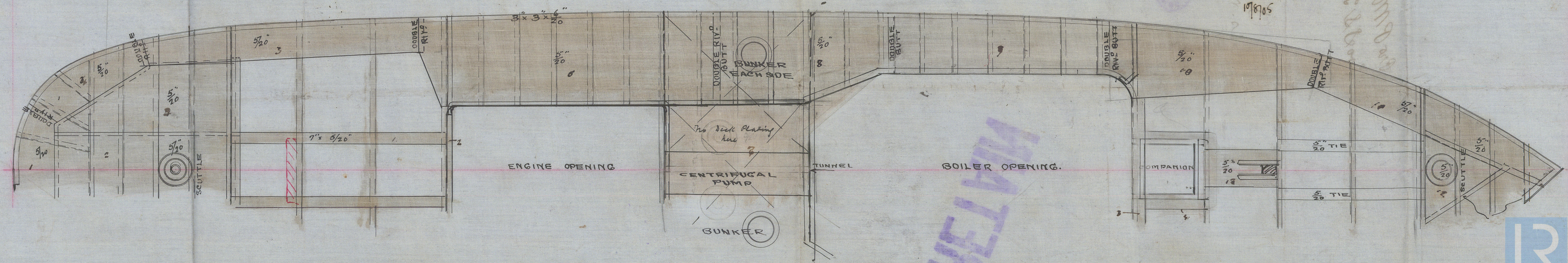
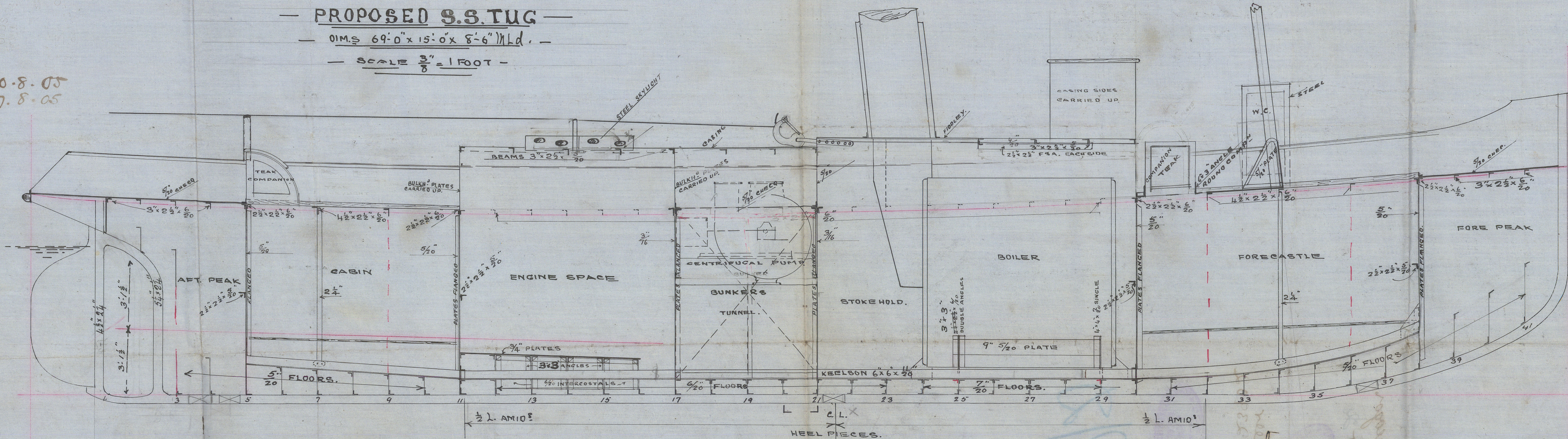


10.8.05
17.8.05

— PROPOSED S.S. TUG —

— DIMS 69'-0" x 15'-0" x 8'-6" MLD. —

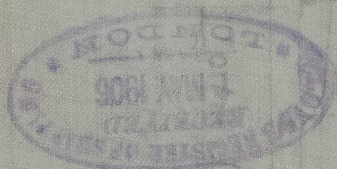
— SCALE $\frac{3}{8}$ " = 1 FOOT —



19/8/05

Pro P Mc Gregor
Pro S S T No 2

Pioneer
Ges. npt. 23902



P/D

RETAIN

W1550-0231



© 2021

Lloyd's Register
Foundation