

HEATING SURFACE	1 BOILER
TUBES $2\frac{1}{2} \times 8-6 \times 266$	1480 SQ. FT.
FURNACES	111 " "
COMB. CHAMBER	130 " "
BACK TUBE PLATES	29 " "
FRONT " "	24 " "
TOTAL	1774 SQ. FT.

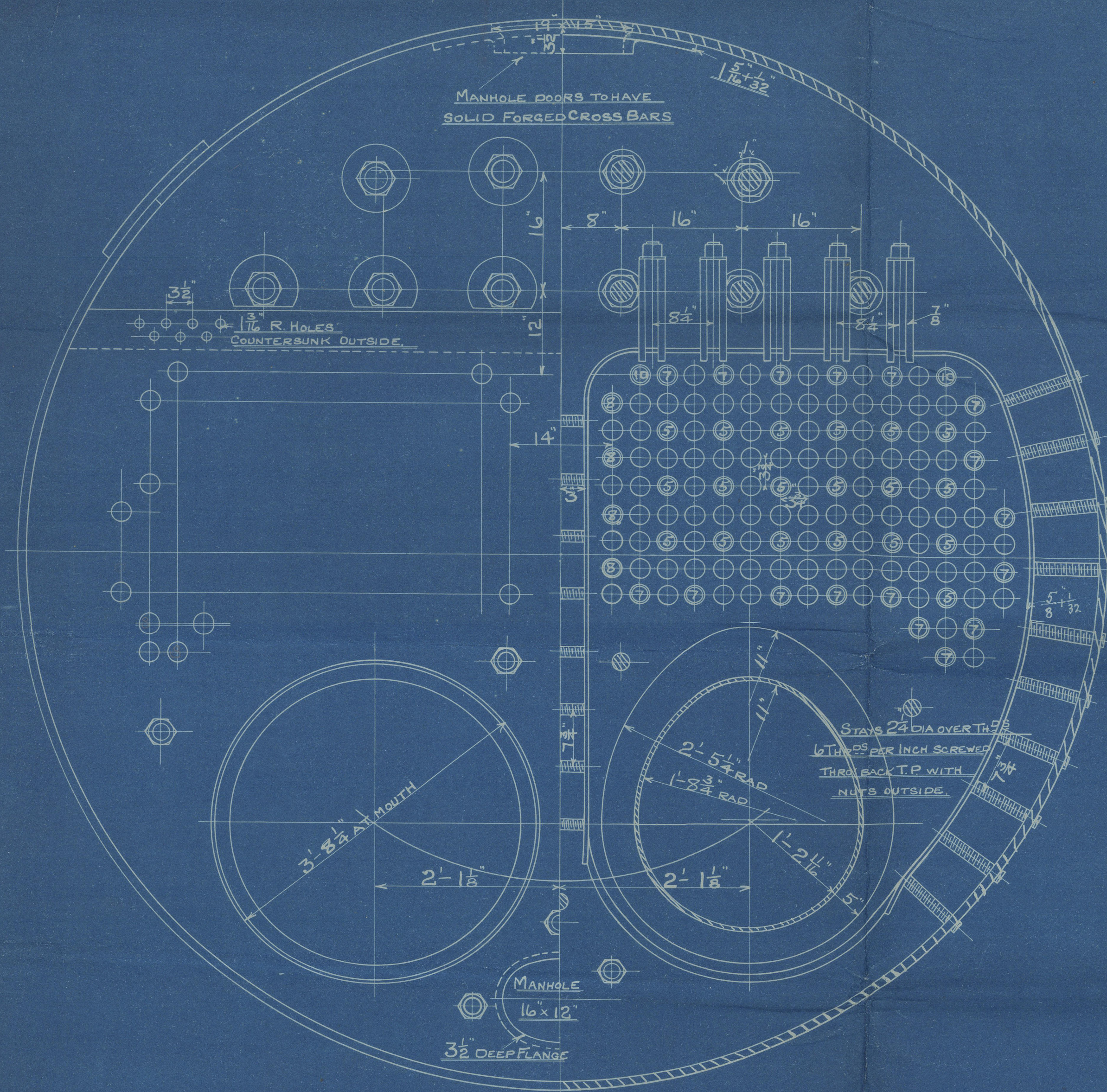
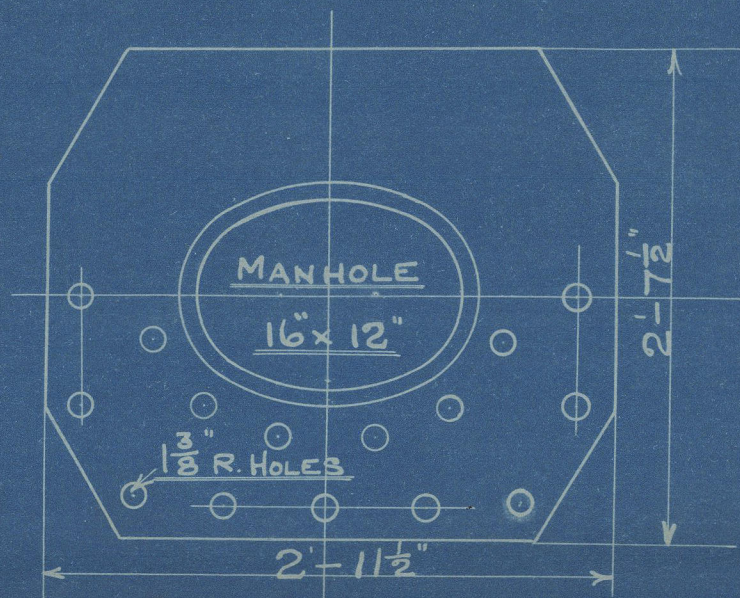
26/7/11

WORKING PRESSURE 225 LBS. LLOYDS +  
TEST " 450 " BOARD OF TRADE.

## AUX. BOILER - 1 OFF

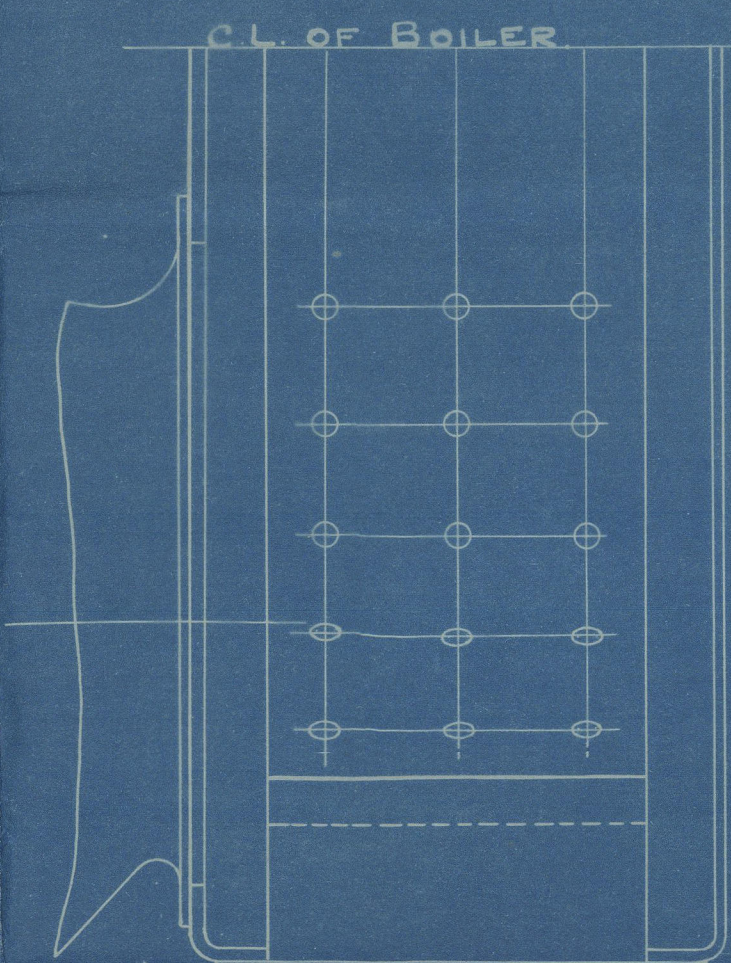
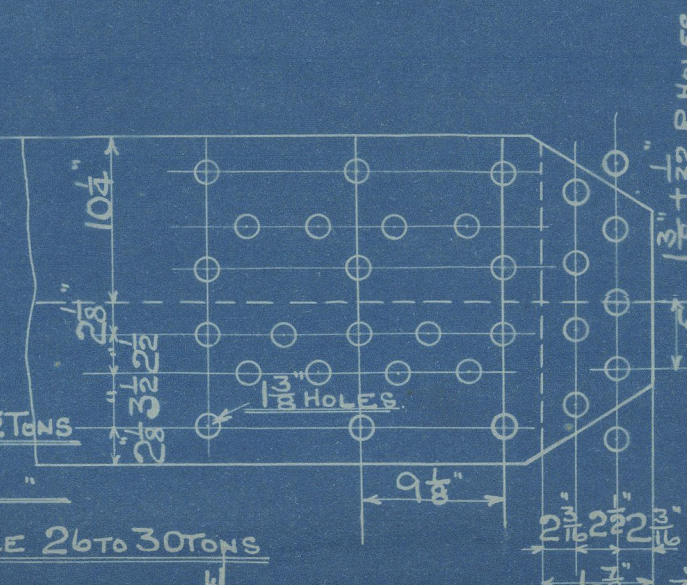
SCALE 1" = 1 FOOT

ALL STEEL EXCEPT WHERE OTHERWISE STATED.

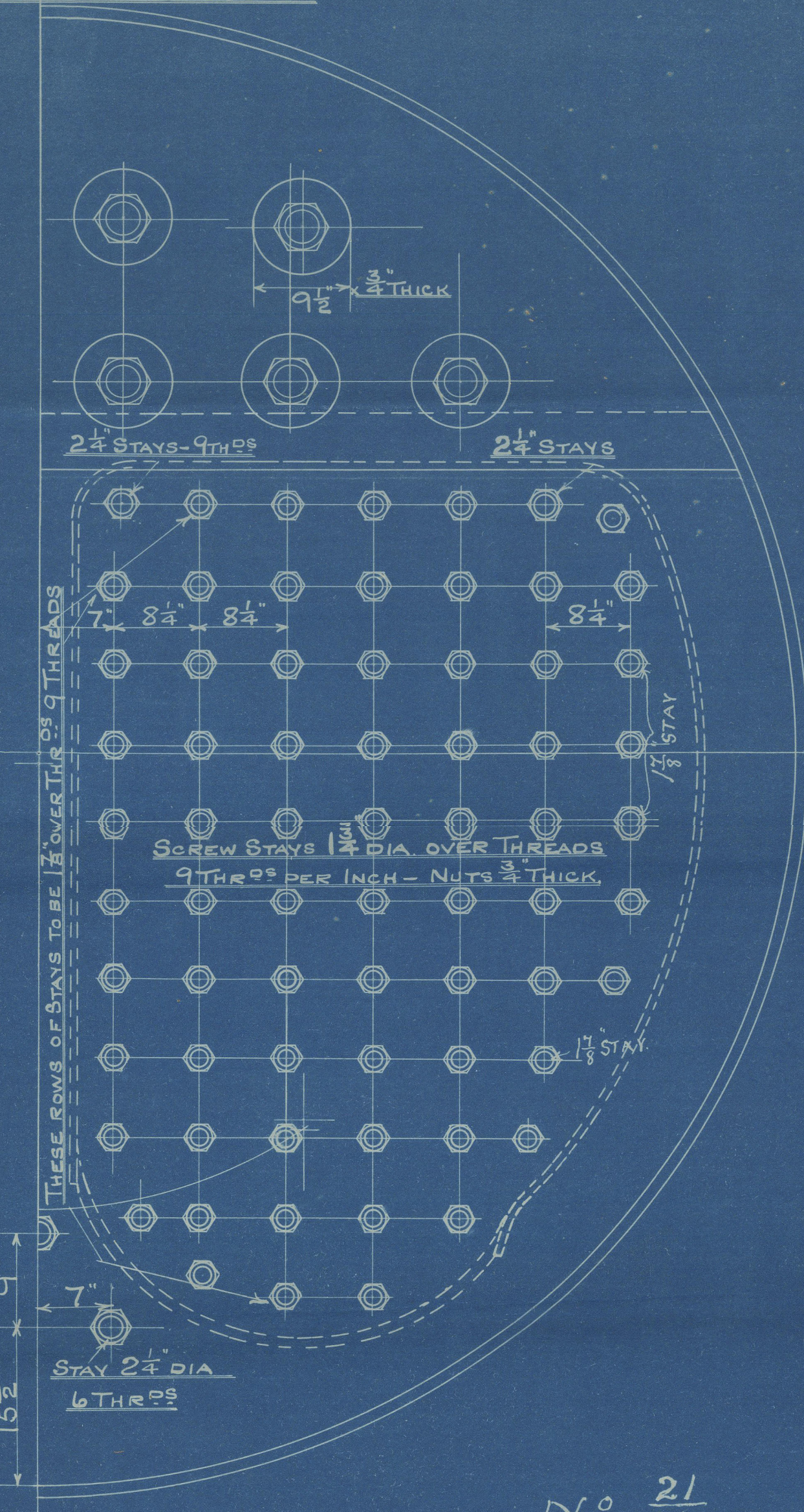
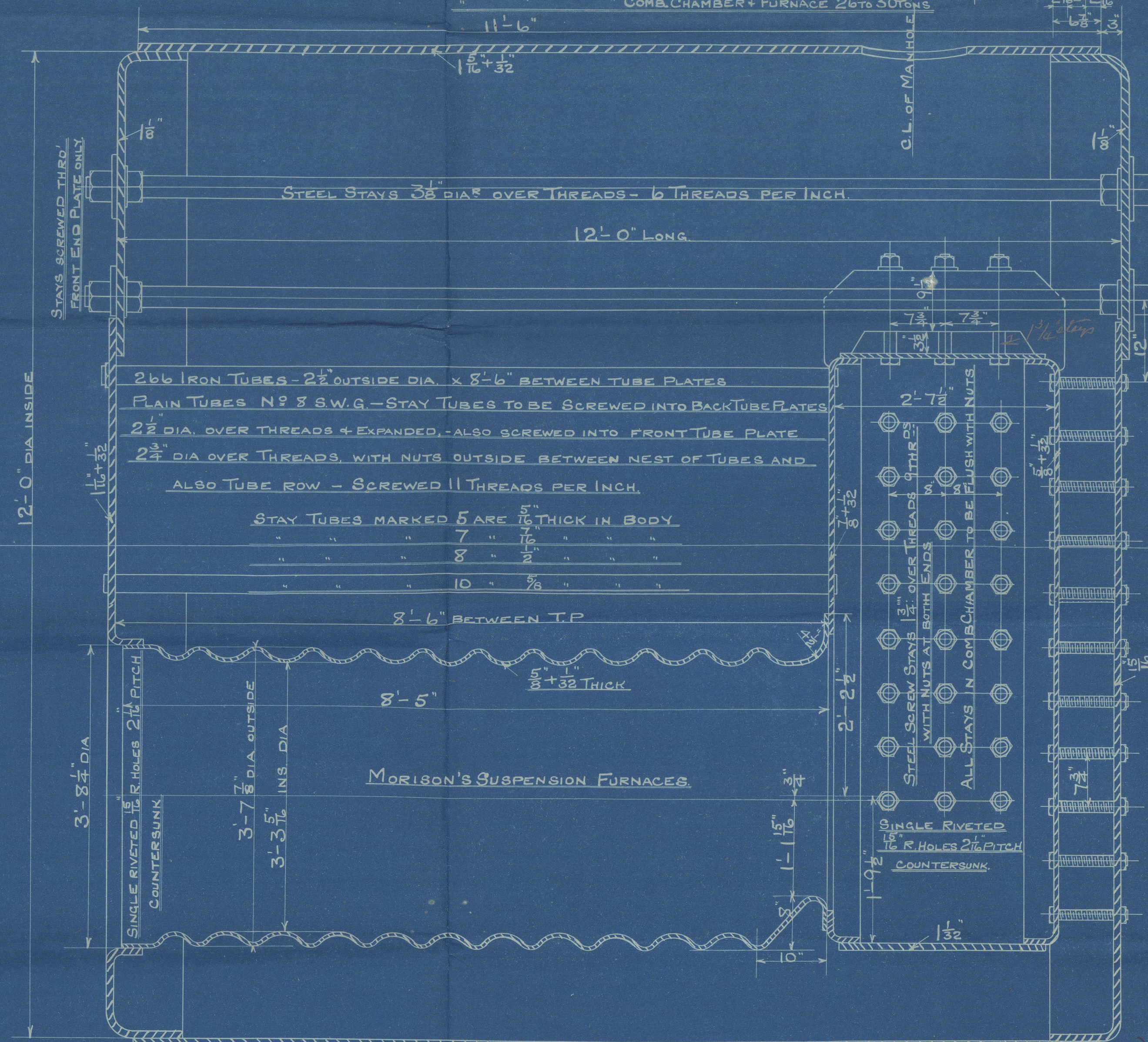


## SHELL RIVETING

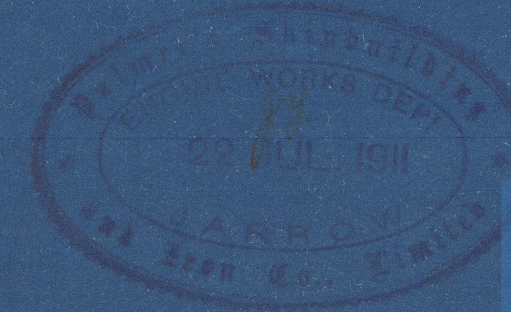
DOUBLE BUTT STRAP JOINTS  
SHELL PLATE  $1\frac{1}{8} \times 32$  THICK - BUTT STRAPS  $1\frac{1}{2} \times 32$   
RIVET HOLES  $1\frac{1}{8}$  DIA. - GREATEST FIT 98  
98 OF STRENGTH OF PLATES AT JOINT 84.9  
" " " RIVETS " 90 B. OPT  
TENSILE STRENGTH OF SHELL PLATE 29 TO 32 TONS  
" " " GIRDERS 28 TO 32 "



SECTION THRO' COMB CHAMBER  
LOOKING TOWARDS SHELL



ENG NO 819



No 21/819



Lloyd's Register  
155-00 51101



Palmer Co Eng 819  
Amended plan of  
Auxiliary Boiler  
225 lbs.

"City of Marseilles"  
Herc. Baber,

---



W/155-0051



© 2020

Lloyd's Register  
Foundation