

15/1/26

# CENTRE BOILER. CONTRACT N° 863.

CHECKED BY AJG.  
DATE 11/1/1926.

TIME CHARGED TO N°1.

MESSRS SWAN HUNTER & Wigham RICHARDSON SHIP N° 1291.  
TO BE CONSTRUCTED TO PASS LLOYDS REQUIREMENTS.

1,0 FF. SCALE 1 INCH = 1 FOOT.

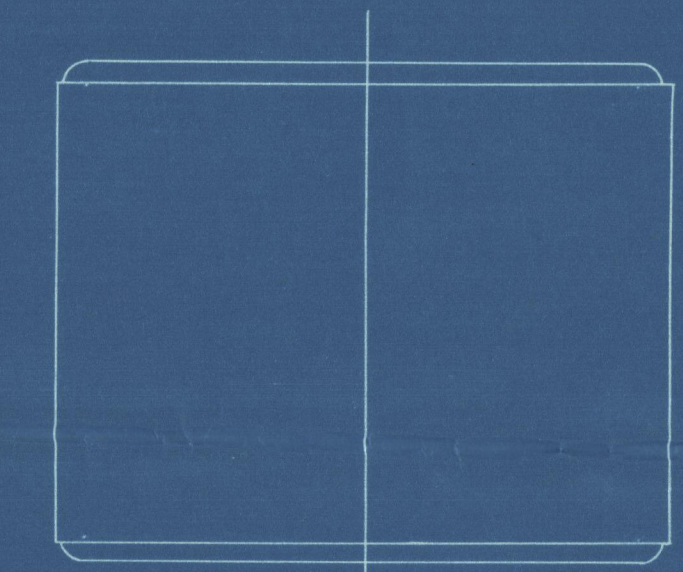
HEATING SURFACE.	
TUBES.	1275
FURNACES	103
COMBUSTION CHAMBERS	151
BACK TUBE PLATE	33
FRONT TUBE PLATE	25
TOTAL.	1587

GRATE SURFACE FIREBARS 5'-6" LONG 4 1/2"

WORKING PRESSURE 135 LBS./SQ.

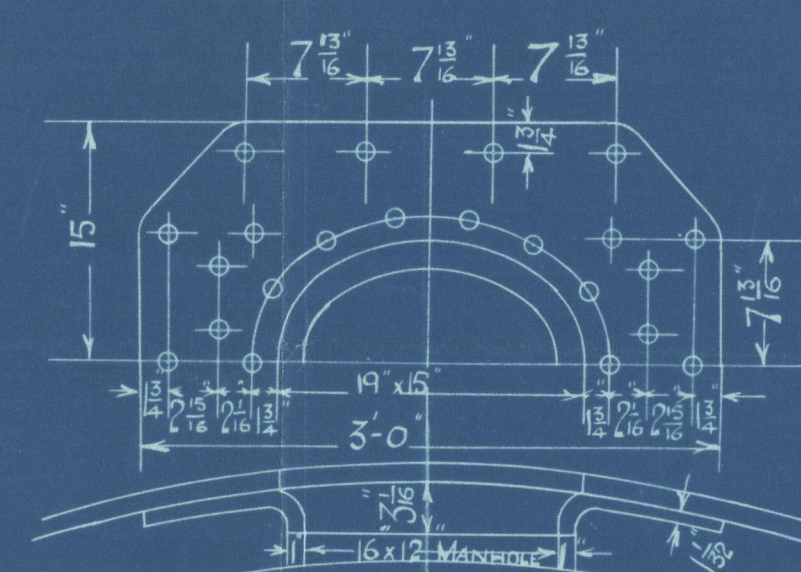
TEST PRESSURE 325 LBS./SQ.

MATERIALS.		
DESCRIPTION	MATERIAL	TENSILE STRENGTH.
SHELL PLATES BUTT STRAPS.	STEEL	30 TO 34 TONS PER SQ. INCH.
C.C. GIRDERS.	"	28 TO 32 " " " "
WRAPPER & FLANGED PLATES.	"	26 TO 30 " " " "
FURNACES.	"	26 TO 30 " " " "
LONGITUDINAL STAYS.	"	28 TO 32 " " " "
C.C. SCREWED STAYS & RIVET BARS.	"	26 TO 30 " " " "
TUBES.	LAP WELDED WROUGHT IRON.	

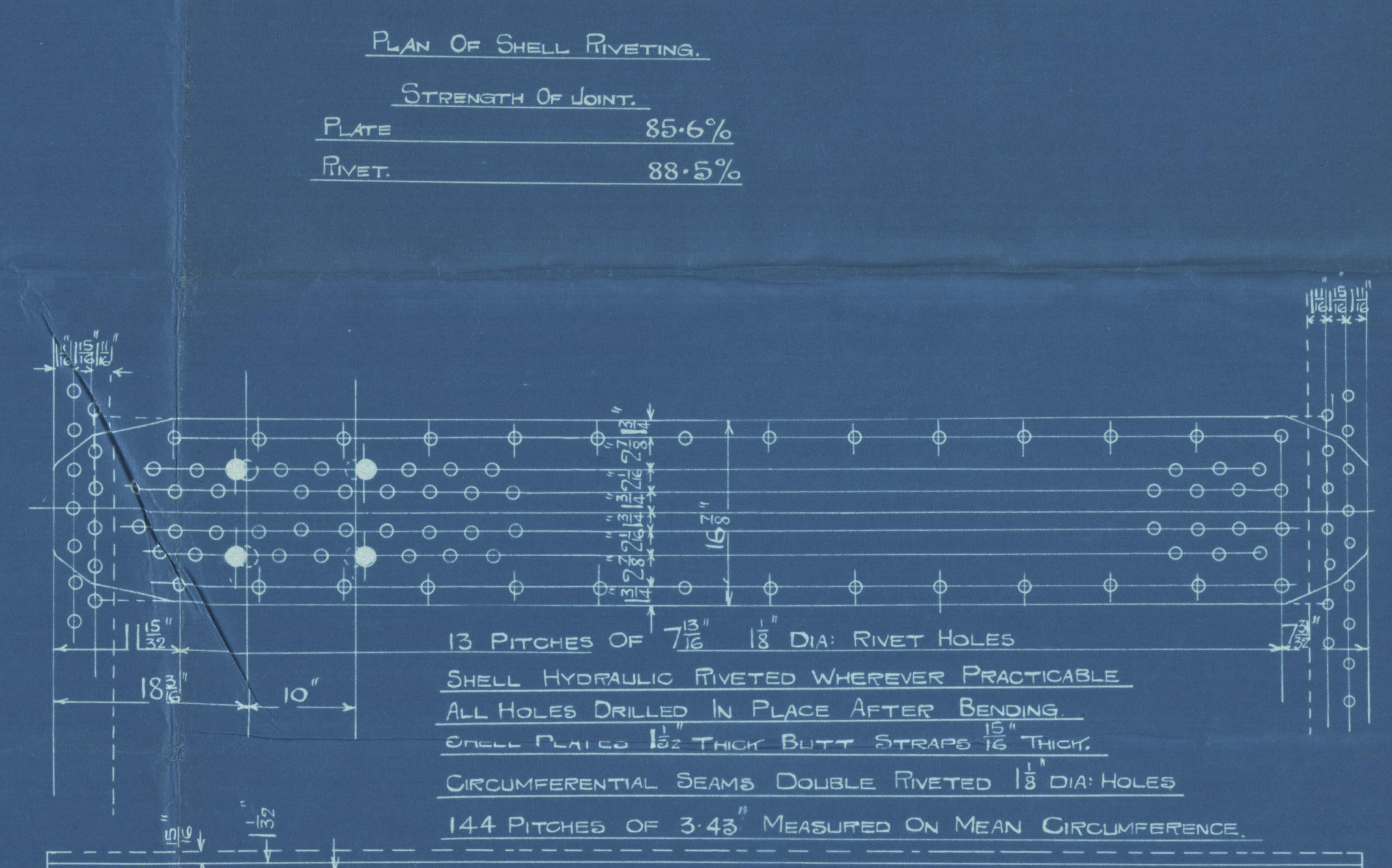


FRONT OF BOILER.

KEY PLAN SHEWING POSITION OF BUTT STRAPS.

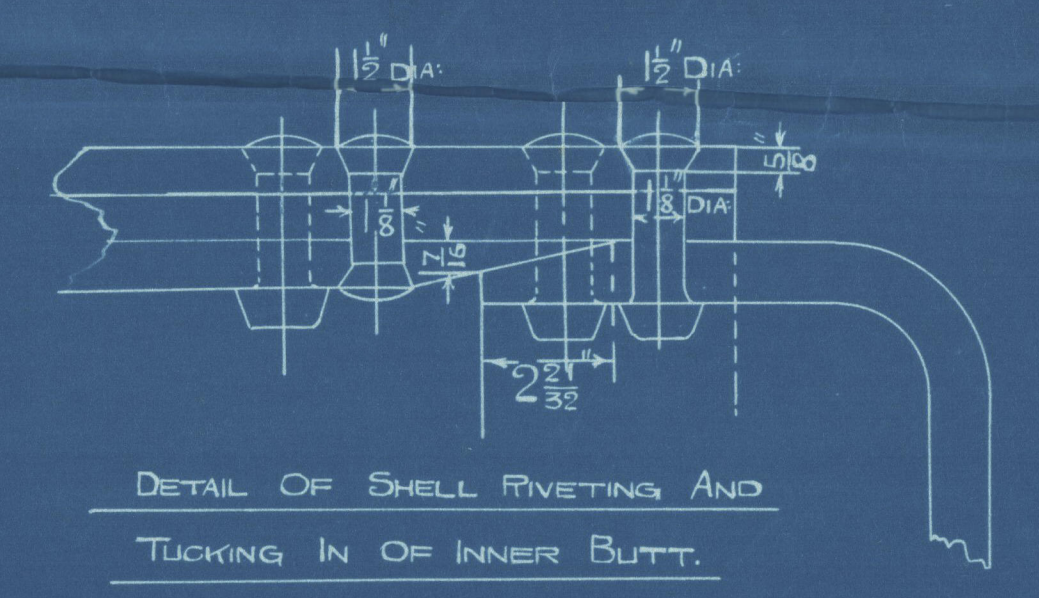


16x12 MANHOLE FITTED WITH  
CORRUGATED TYPE DOOR.  
DOUBLING RIVETED TO SHELL BY  
40 RIVETS 1 1/2 DIA. HOLES

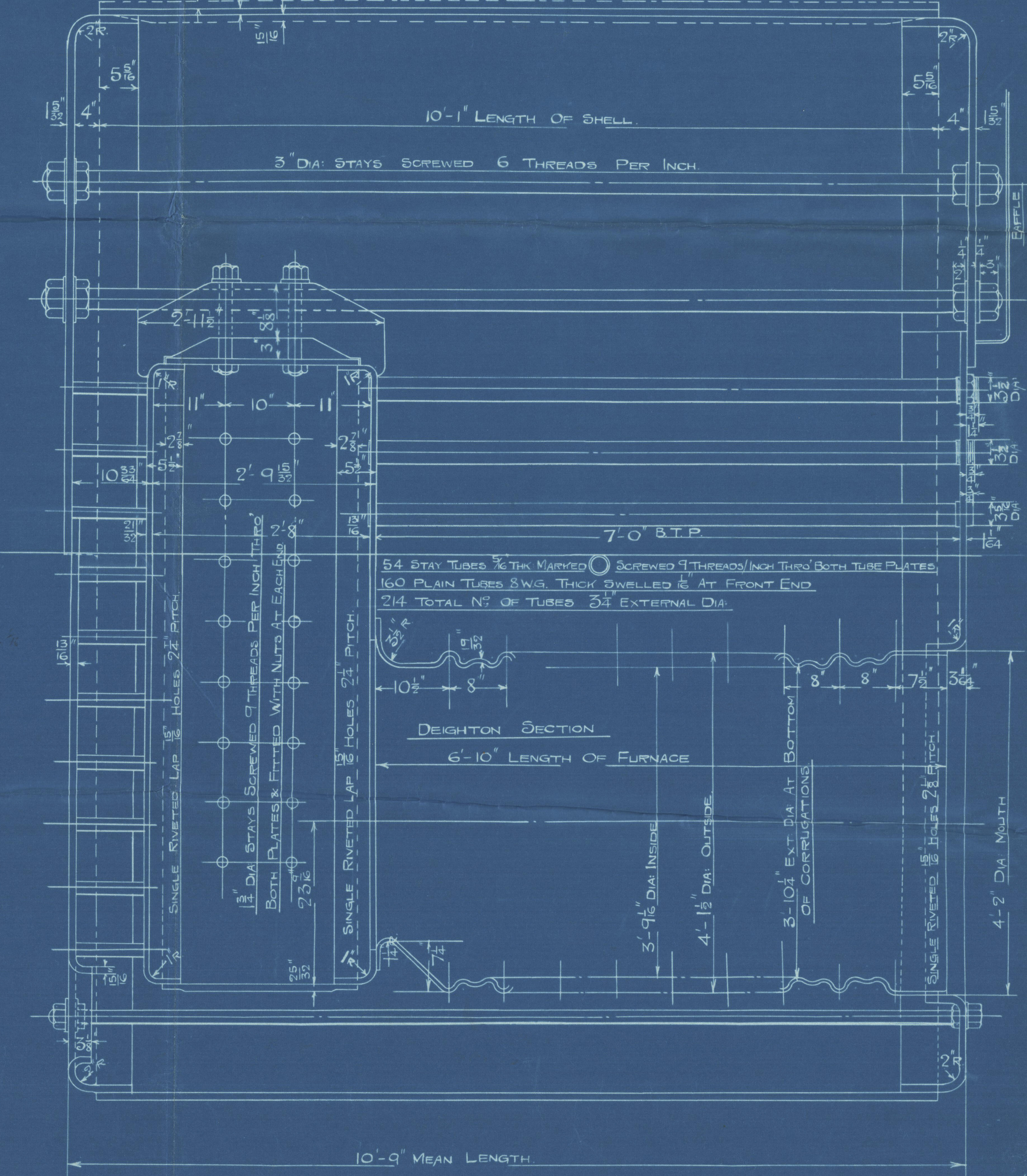
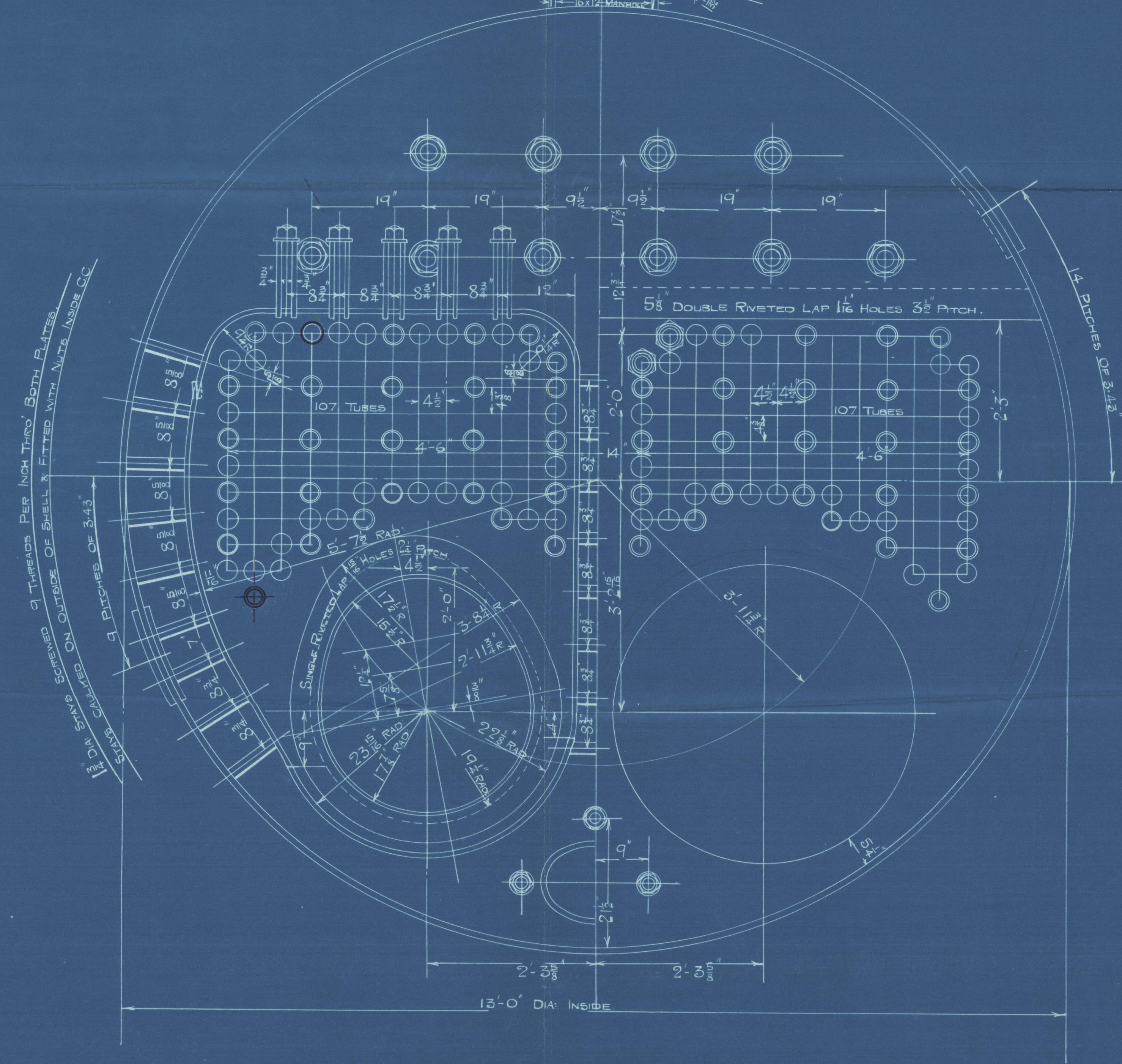


STRENGTH OF JOINT.  
PLATE 85.6%  
RIVET 88.5%

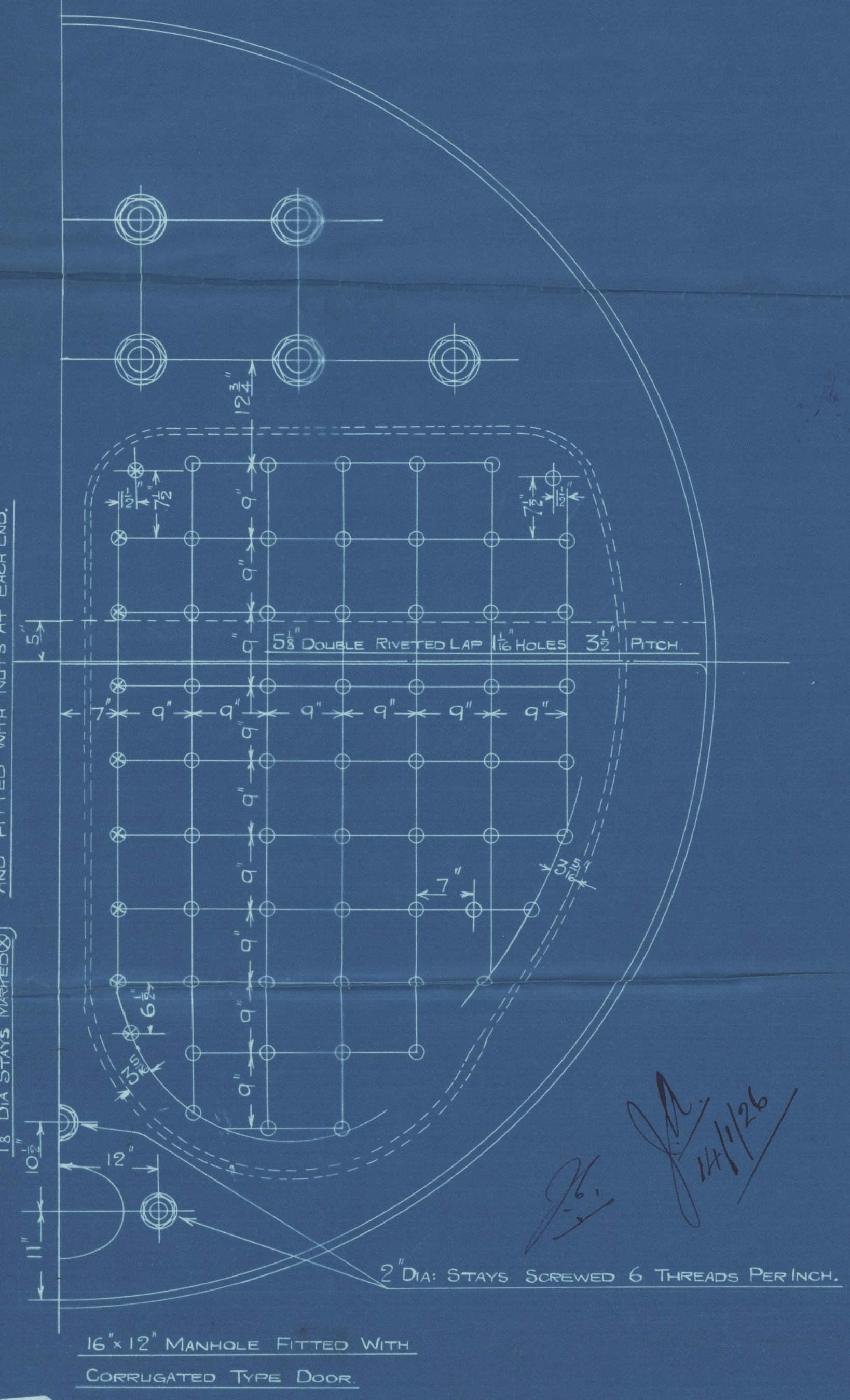
13 PITCHES OF 1 1/2 DIA. RIVET HOLES  
SHELL HYDRAULIC RIVETED WHEREVER PRACTICABLE  
ALL HOLES DRILLED IN PLACE AFTER BENDING  
SHELL PLATES 1 1/2 THICK BUTT STRAPS 1 1/2 THICK  
CIRCUMFERENTIAL SEAMS DOUBLE RIVETED 1 1/2 DIA. HOLES  
144 PITCHES OF 3 4/8" MEASURED ON MEAN CIRCUMFERENCE.



DETAIL OF SHELL RIVETING AND  
TUCKING IN OF INNER BUTT.



1 1/2 DIA. STAYS MARKED  
1 1/2 DIA. STAYS MARKED  
SCREWED 9 THREADS PER INCH THRO' BOTH PLATES  
AND FITTED WITH NUTS AT EACH END.



16x12 MANHOLE FITTED WITH  
CORRUGATED TYPE DOOR.





W 884 Cny  
S.H. 12/11

863.  
Centre Bld

12/1/59  
S/S City of Oxford

S. S. "CITY OF OXFORD"  
NEWCASTLE ON TYNE.

Report No. 80769

W155-0032



© 2020

Lloyd's Register  
Foundation