

300 TON P.W.C. REINFORCED CONCRETE MOTOR COASTER.

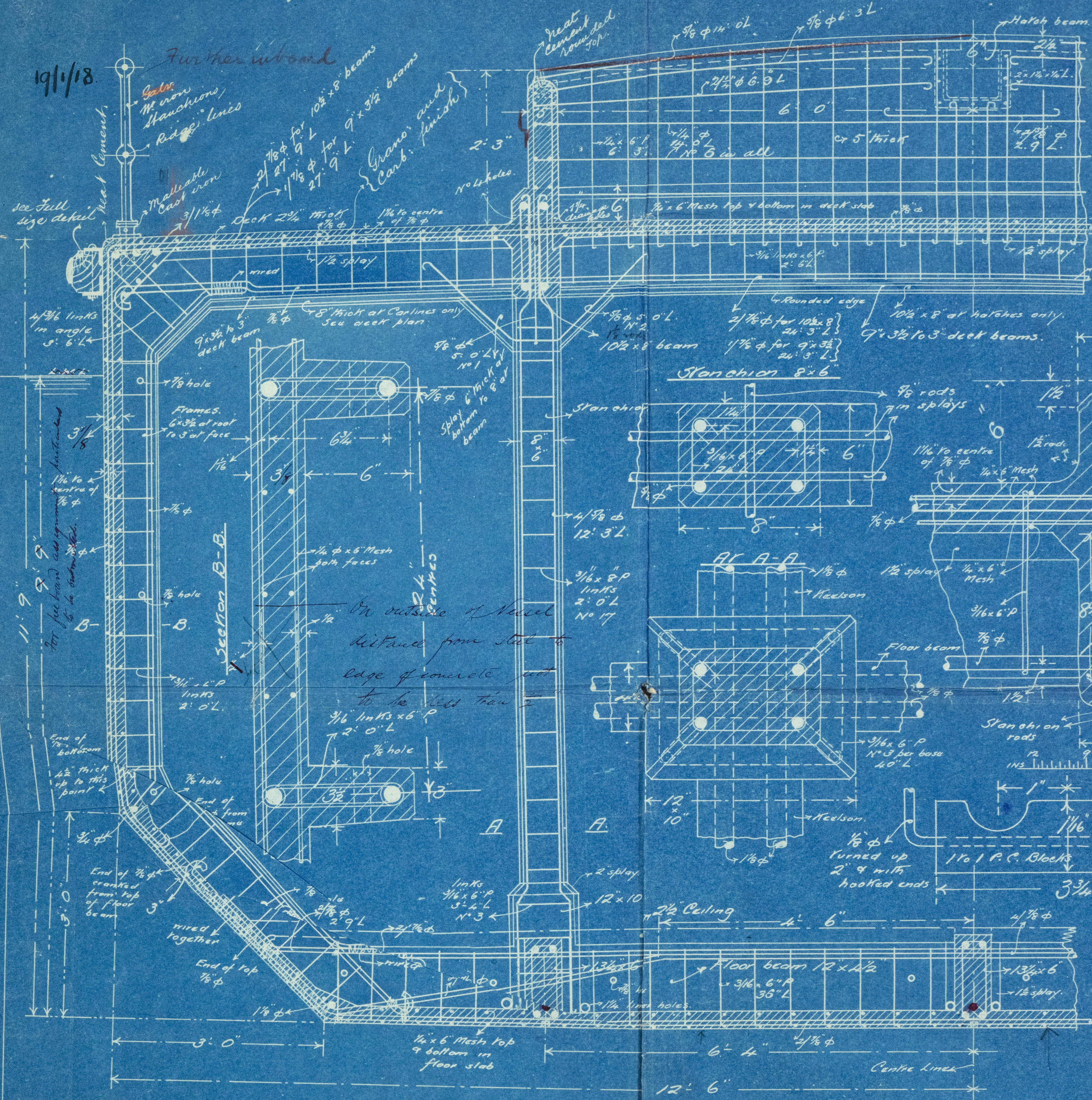
MESSRS JAMES POLLOCK SON & CO LTD
3 LLOYDS AVENUE E.C.3.
NAVAL ARCHITECTS.

GENERAL CROSS SECTIONS, DETAILS, ETC.

Scales 1" = 3" = 1 foot

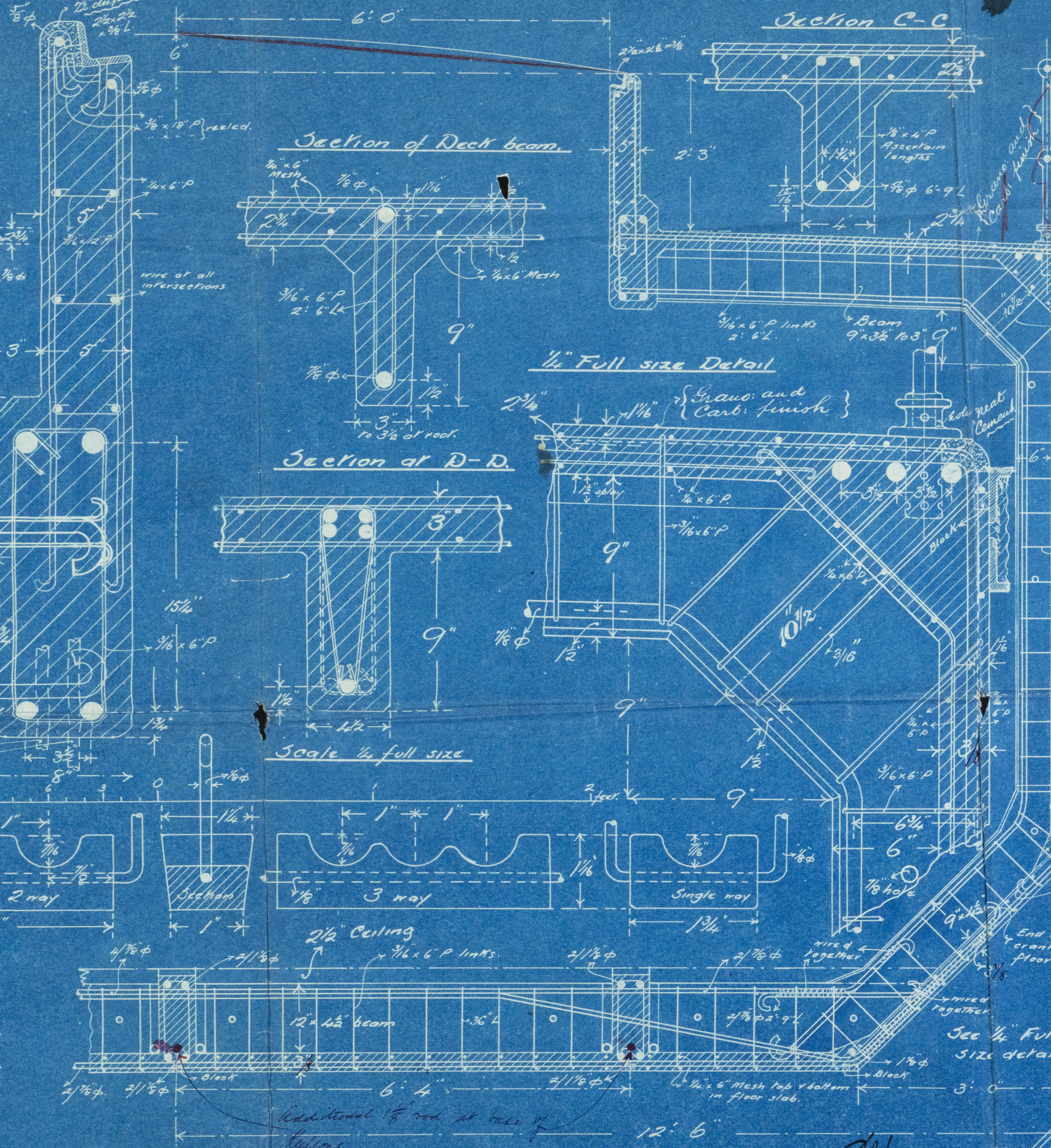
DRAWING No 4.

Half Cross Section at 29 + 46 Scale 1" = 1 foot

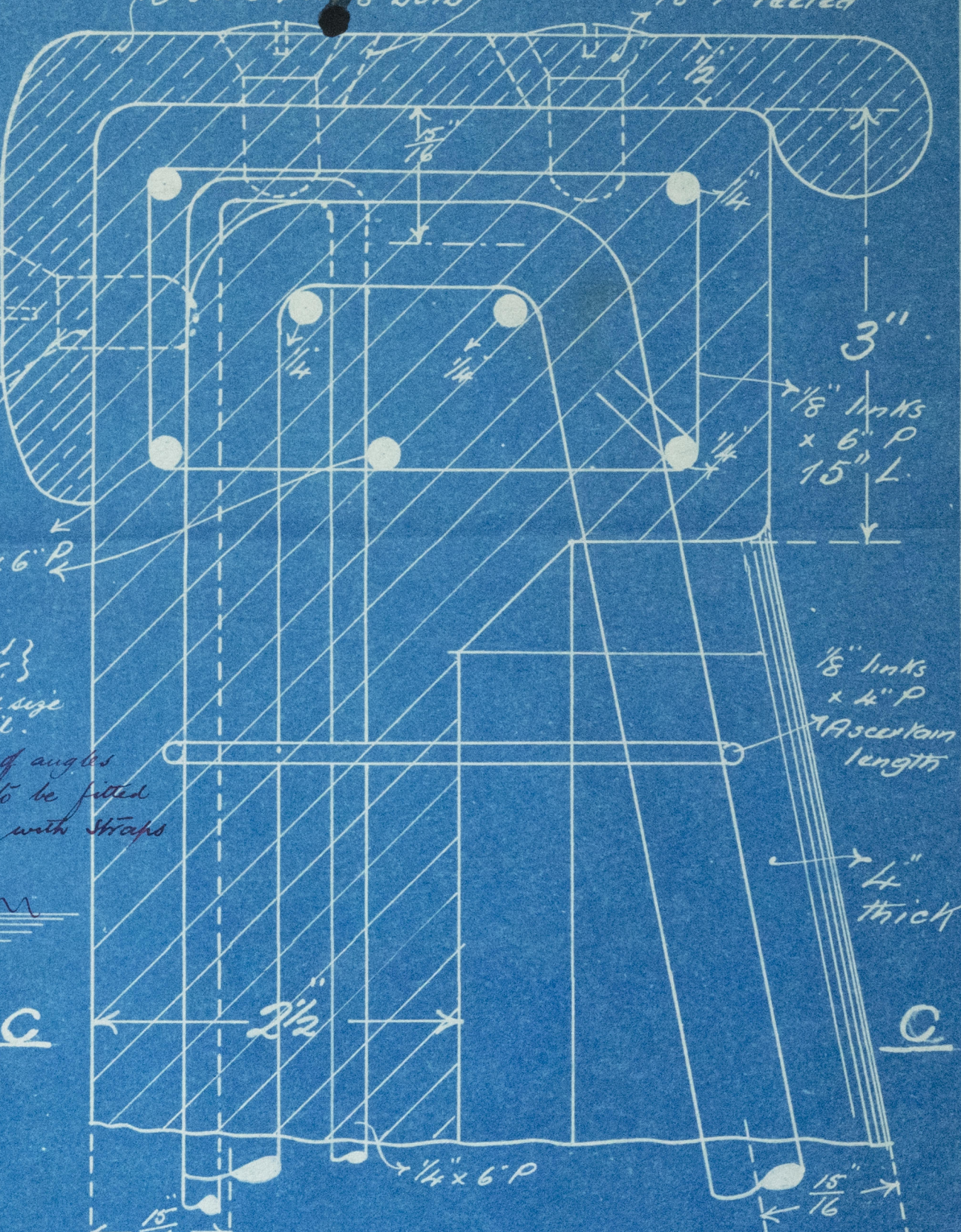


1/4 Full size Section of Coaming & Carline

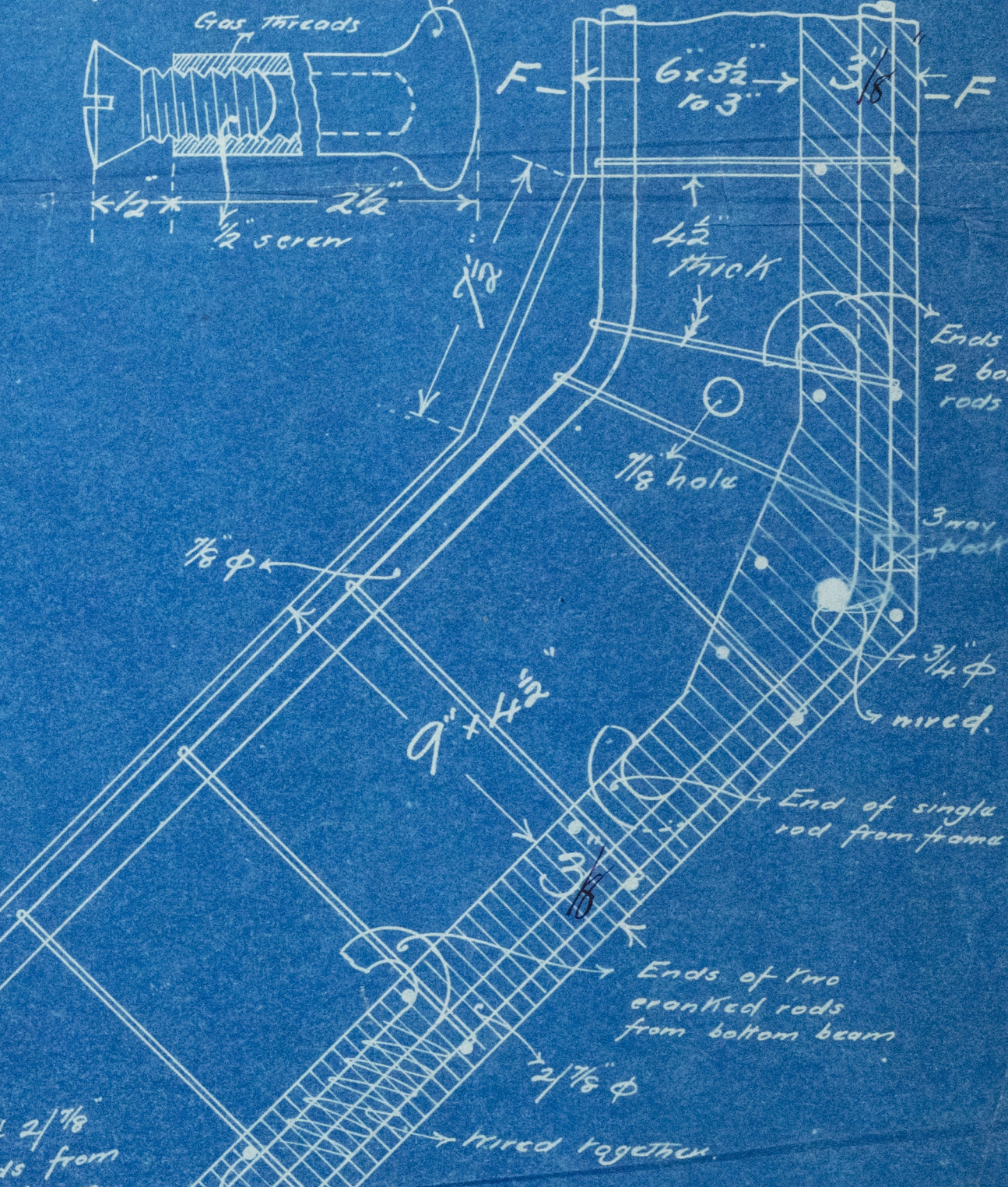
Half Cross Section at 22 + 40.



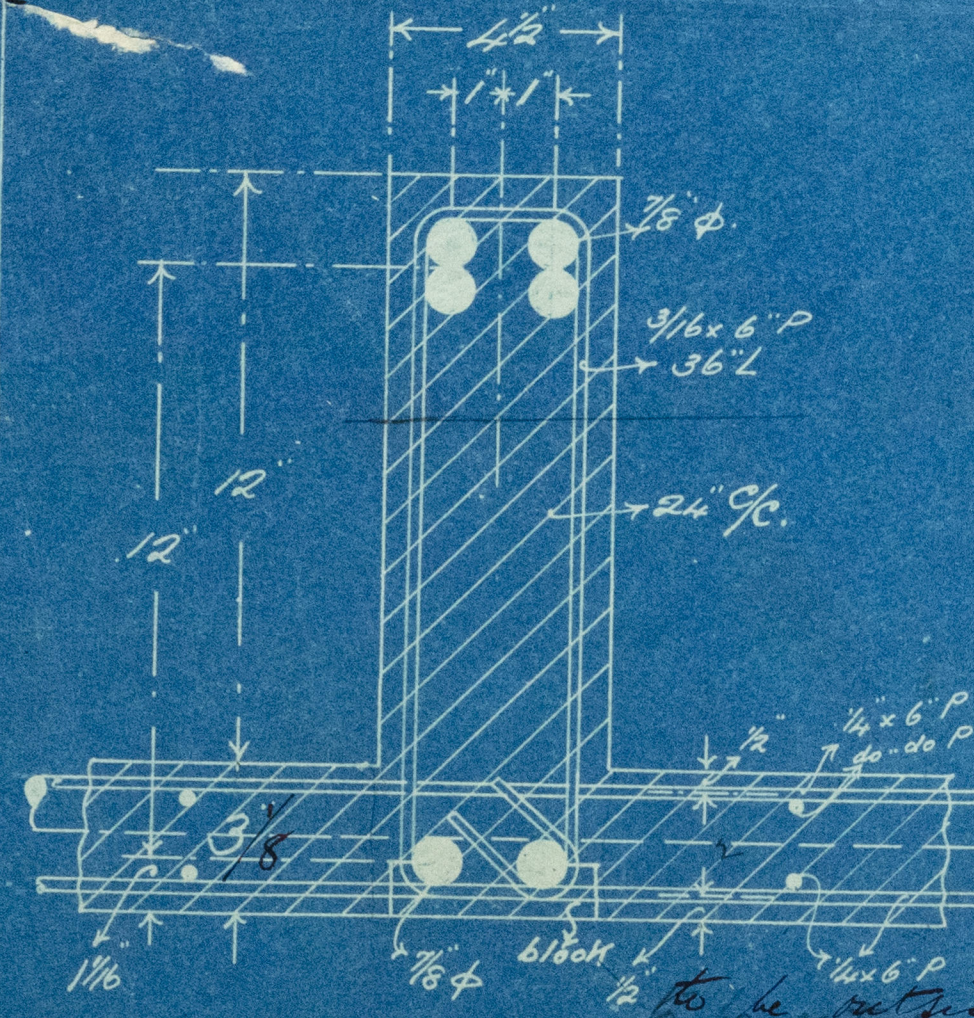
Full size detail of Rail to Bulwarks



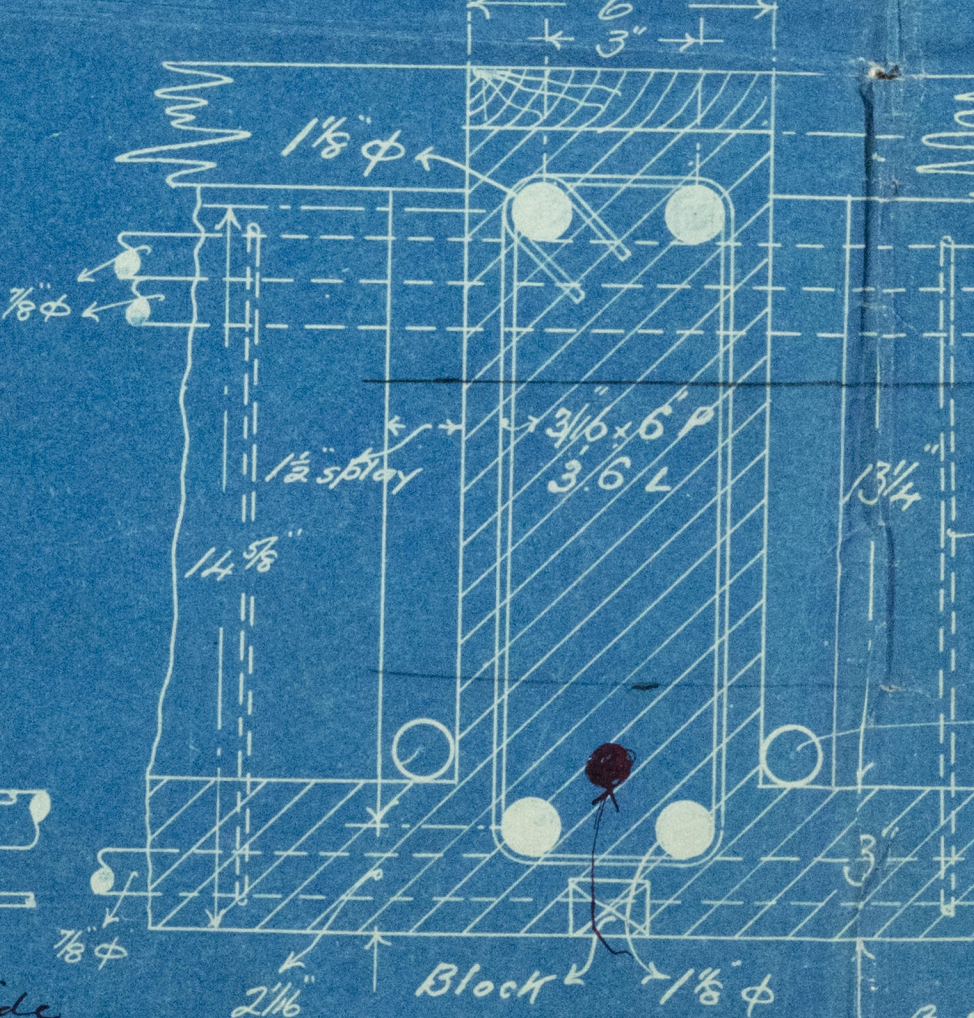
Full size detail of screws etc.



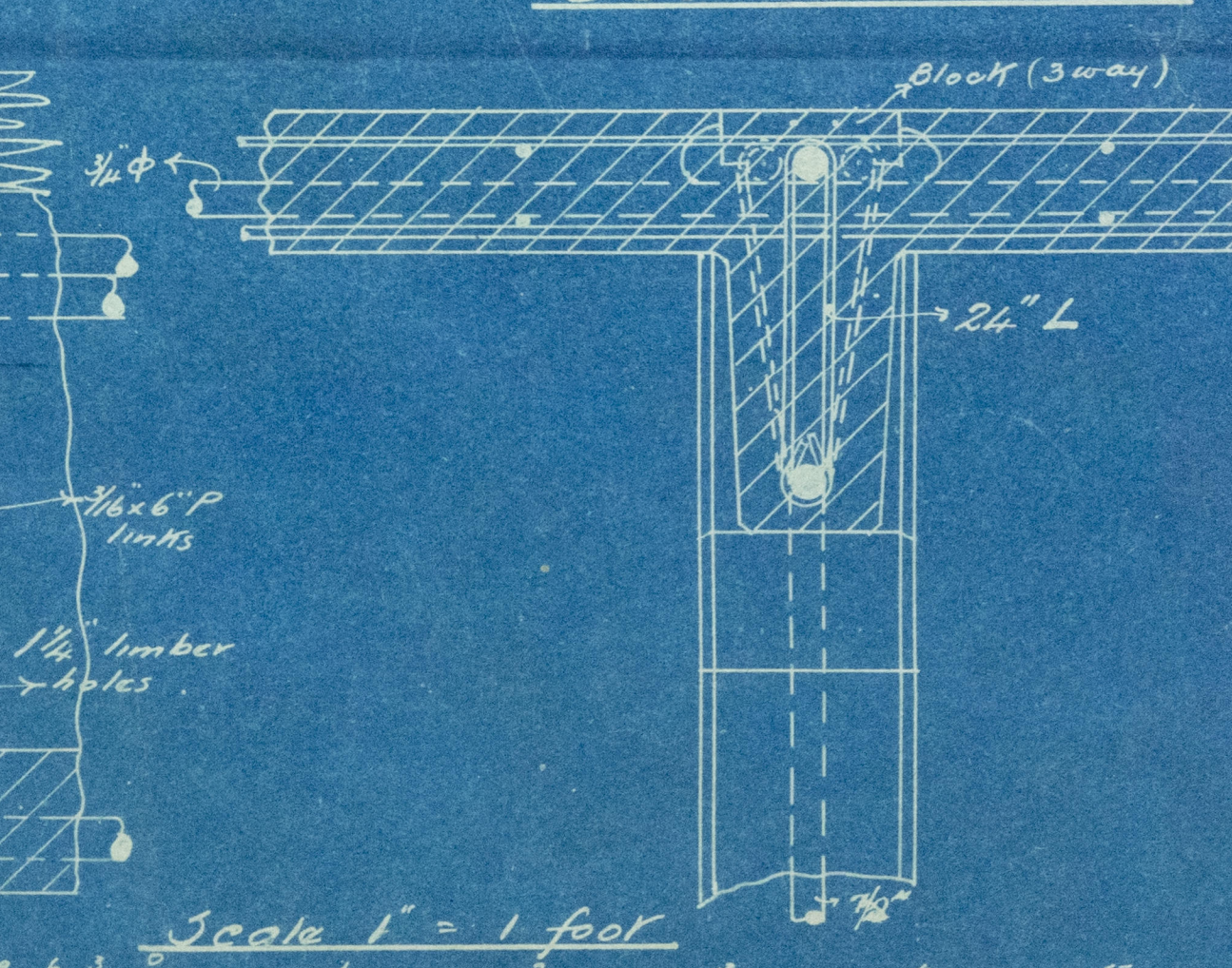
Section of 12 x 4 1/2 floor beams



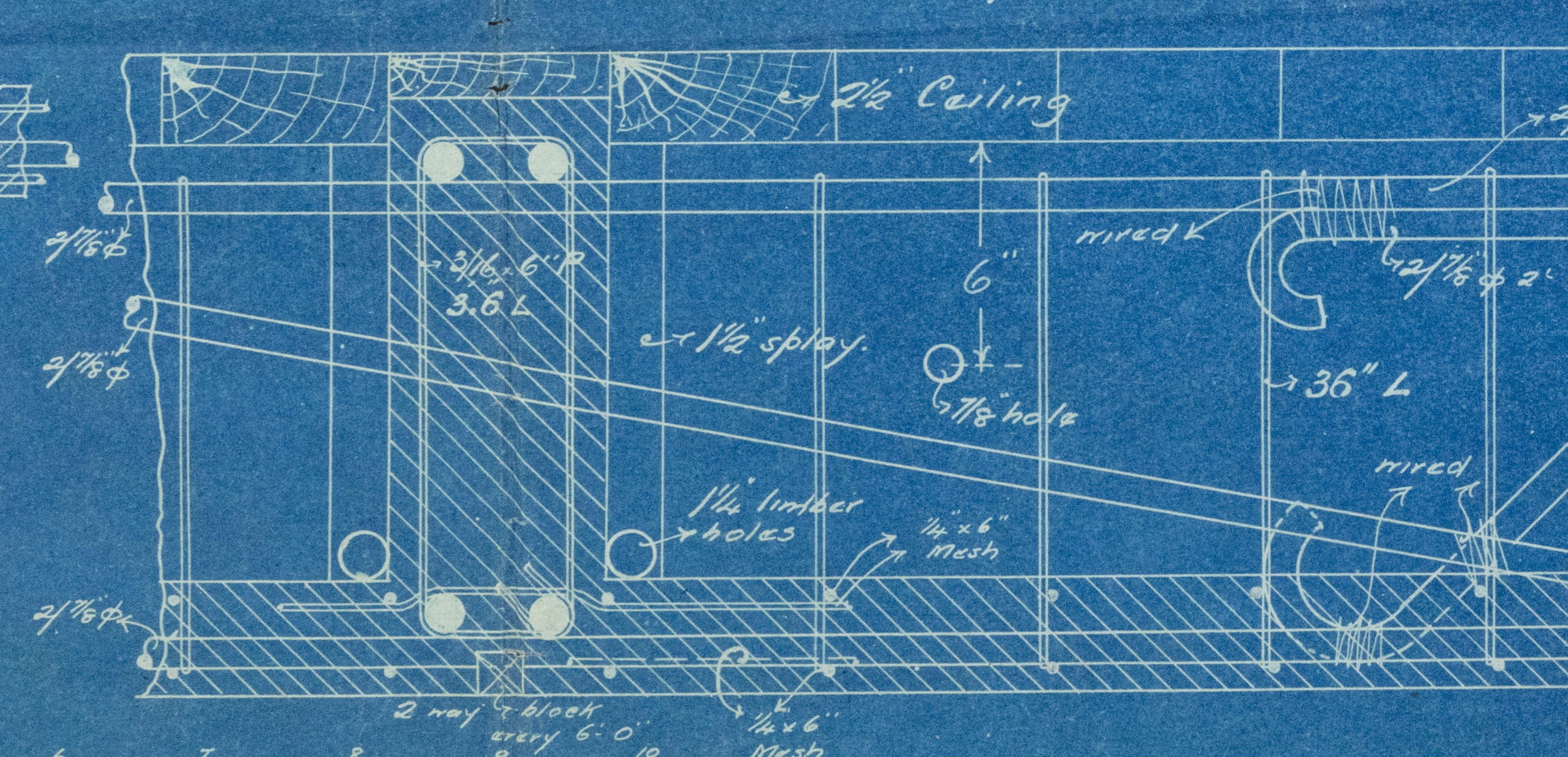
Section of 13 1/2 x 6 Keelsons



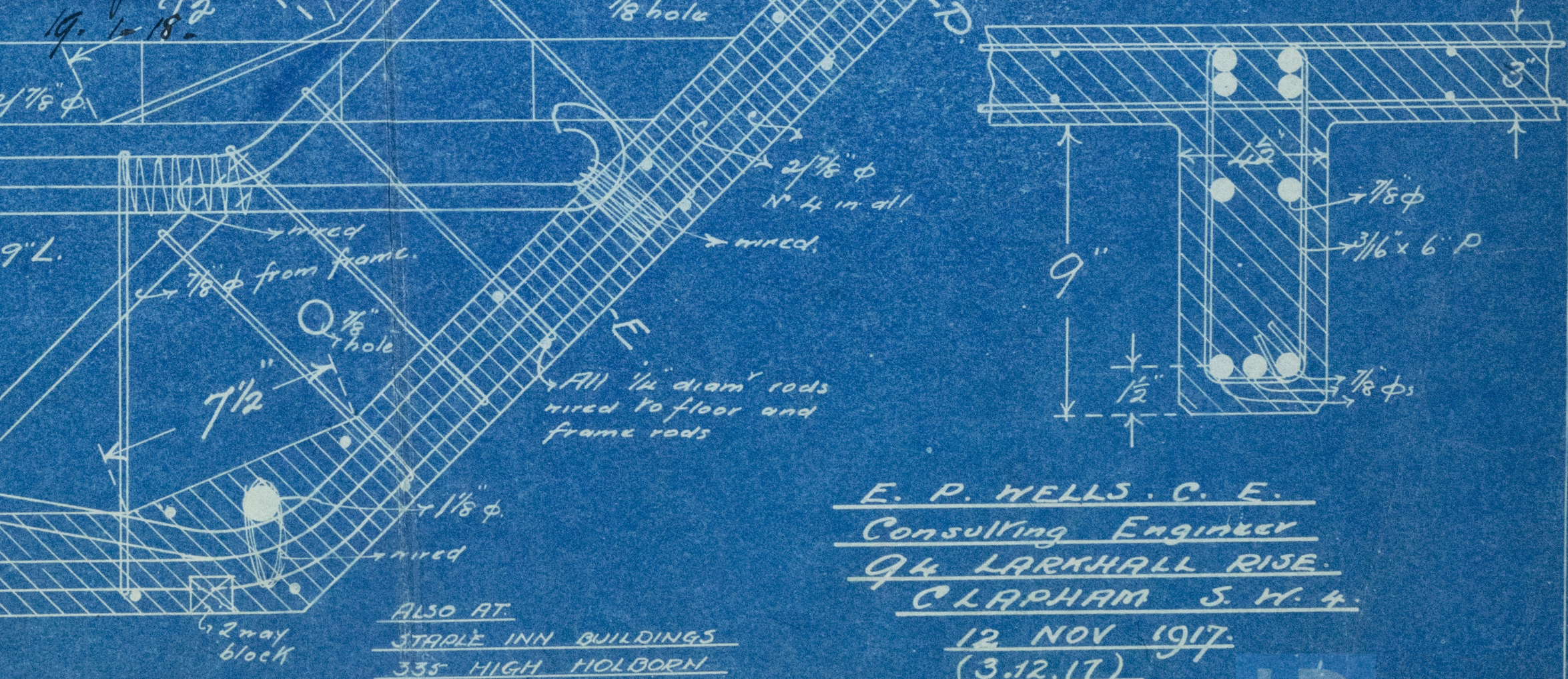
Section of F-F



1/4 Full size detail of Floor Chime & Frame



Section of E-E



F. P. WELLS, C. E.
Consulting Engineer
96 LARKHALL ROAD
CLAPHAM S.W.4.

12 NOV 1917
(3.12.17)

COPYRIGHT

PLAN No 15726

POWER No 43

29-12-17

W1544-0108

Midship Section
Details

W1549-0108

General Cross Section Plan

1576

Auxiliary schooner
"Molliette"

Long Rm 81543.

RETAIN

W1549-0108



© 2020

Lloyd's Register
Foundation

1/2 lb Bandy No. 1 Petal

1 " Aless pine madder Petal

W1549-0108



© 2020

Lloyd's Register
Foundation