

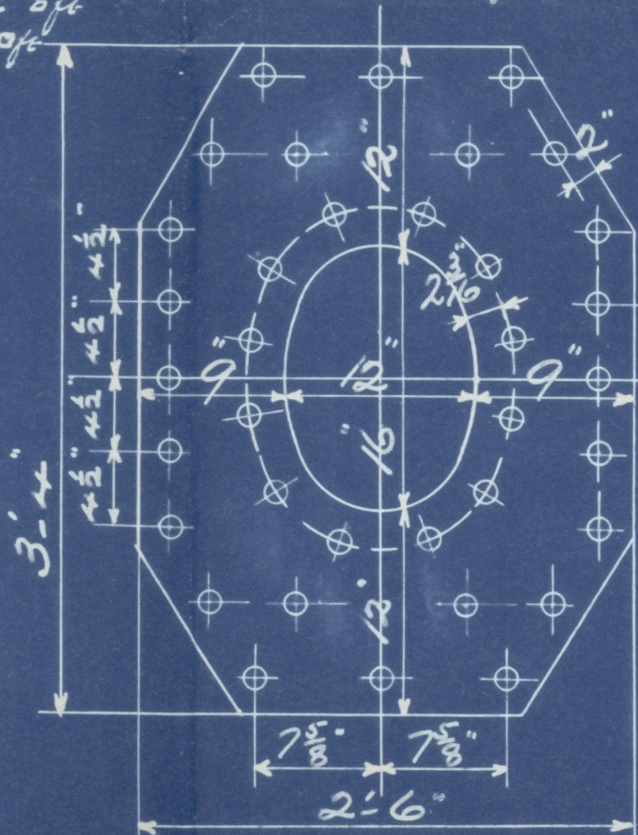
Hull.
W1547-0043 2/2

BOILER

LENGTH OF D^o 12'-6" inside
NUMBER OF TUBES 162
LENGTH OF D^o 10'-1 3/8" over bottom plates
DIAM OF D^o 3 1/2" AREA THRO TUBES 8.3 sq ft
HEATING SURFACE IN TUBES 946.8 sq ft
TOTAL HEATING SURFACE 1192 sq ft
FIRE BAR SURFACE 35 sq ft
DIAM OF SAFETY VALVES 2 1/2"
CUBIC FEET OF STEAM SPACE 260
WORKING PRESSURE 180 lbs LLOYDS

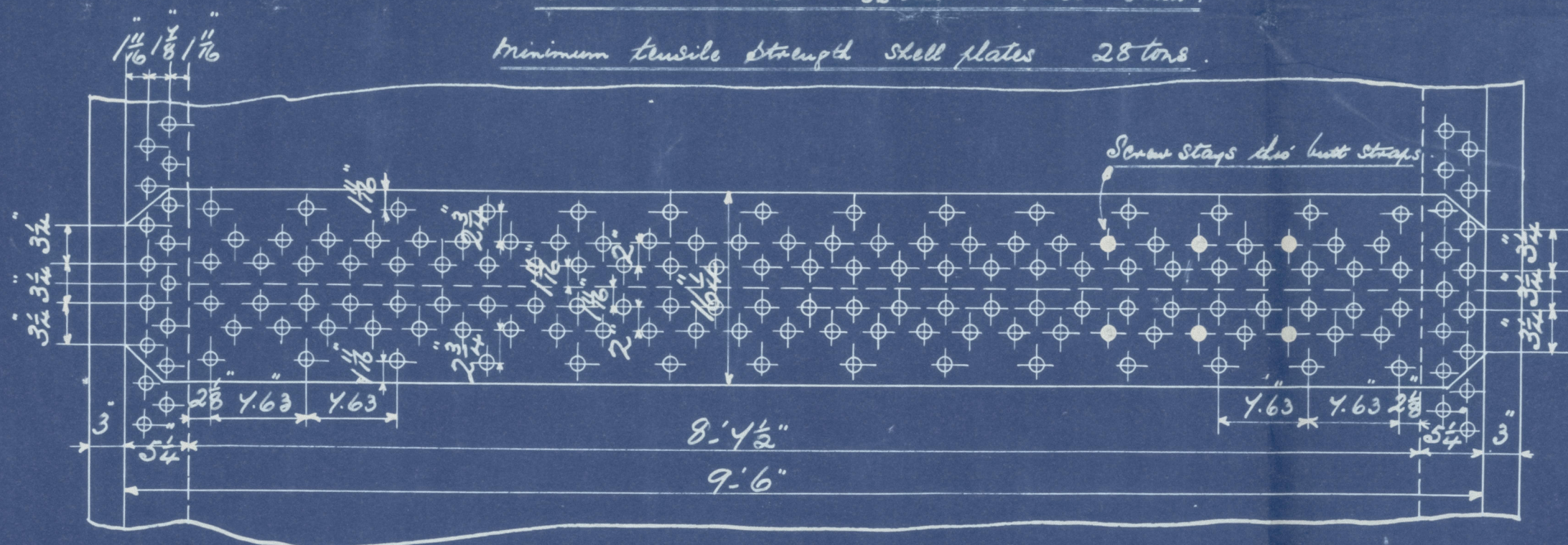
22.12.06

Doubling plates 1 1/2" thick
Rivets 1 3/8" holes 1 1/2"
Fillet outside shell with flange
and longitudinally



Circumferential Seams 3/4" pitch
7/8" plate 65.4
7/8" rivets 50.0
Longitudinal Seams 7/8" pitch
7/8" plate 85.2
7/8" rivets 90.0
Double butt straps 1 1/2" thick
All rivets in shell 1 3/8" dia. Holes 1 1/2" dia.

Minimum tensile strength shell plates 25 tons



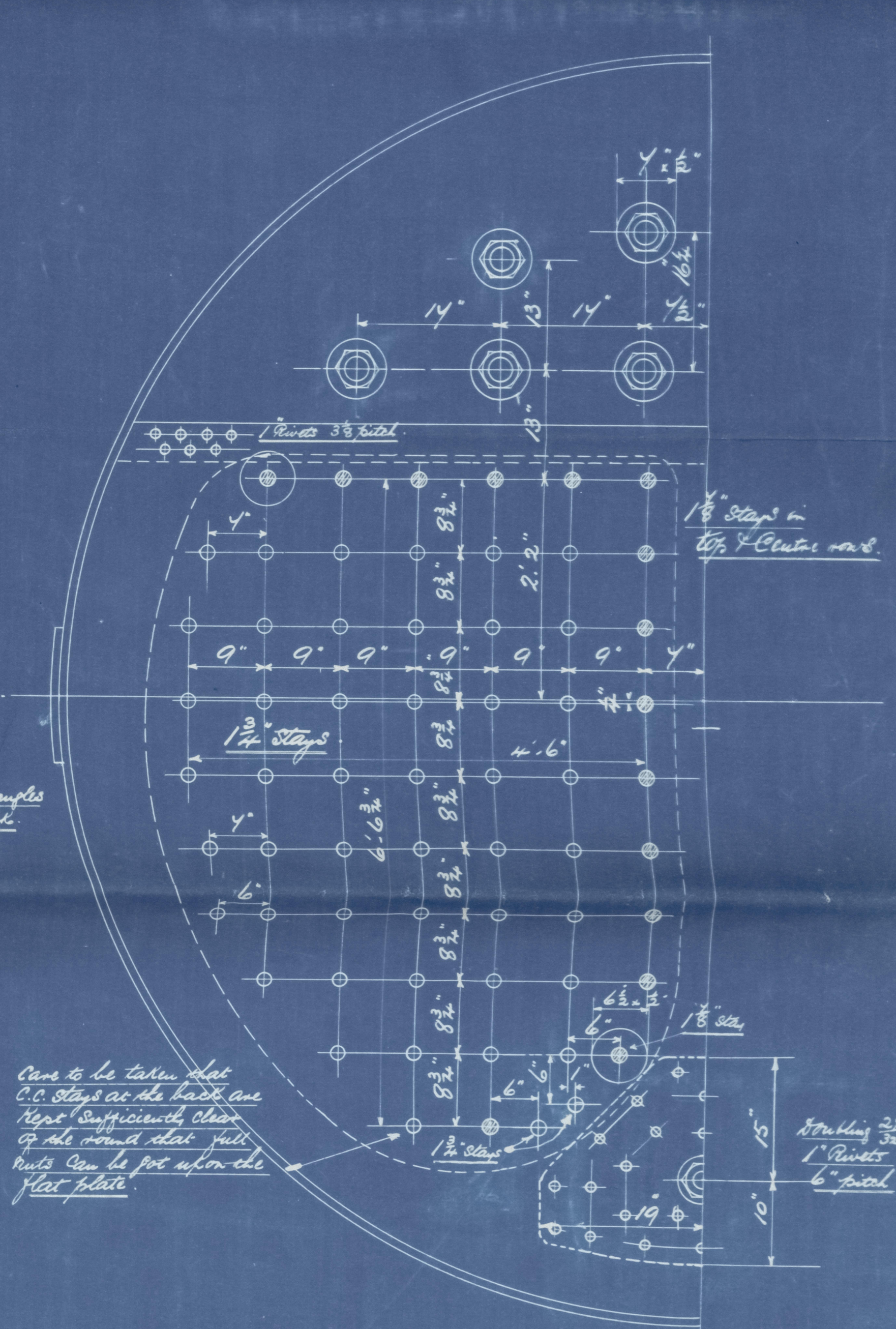
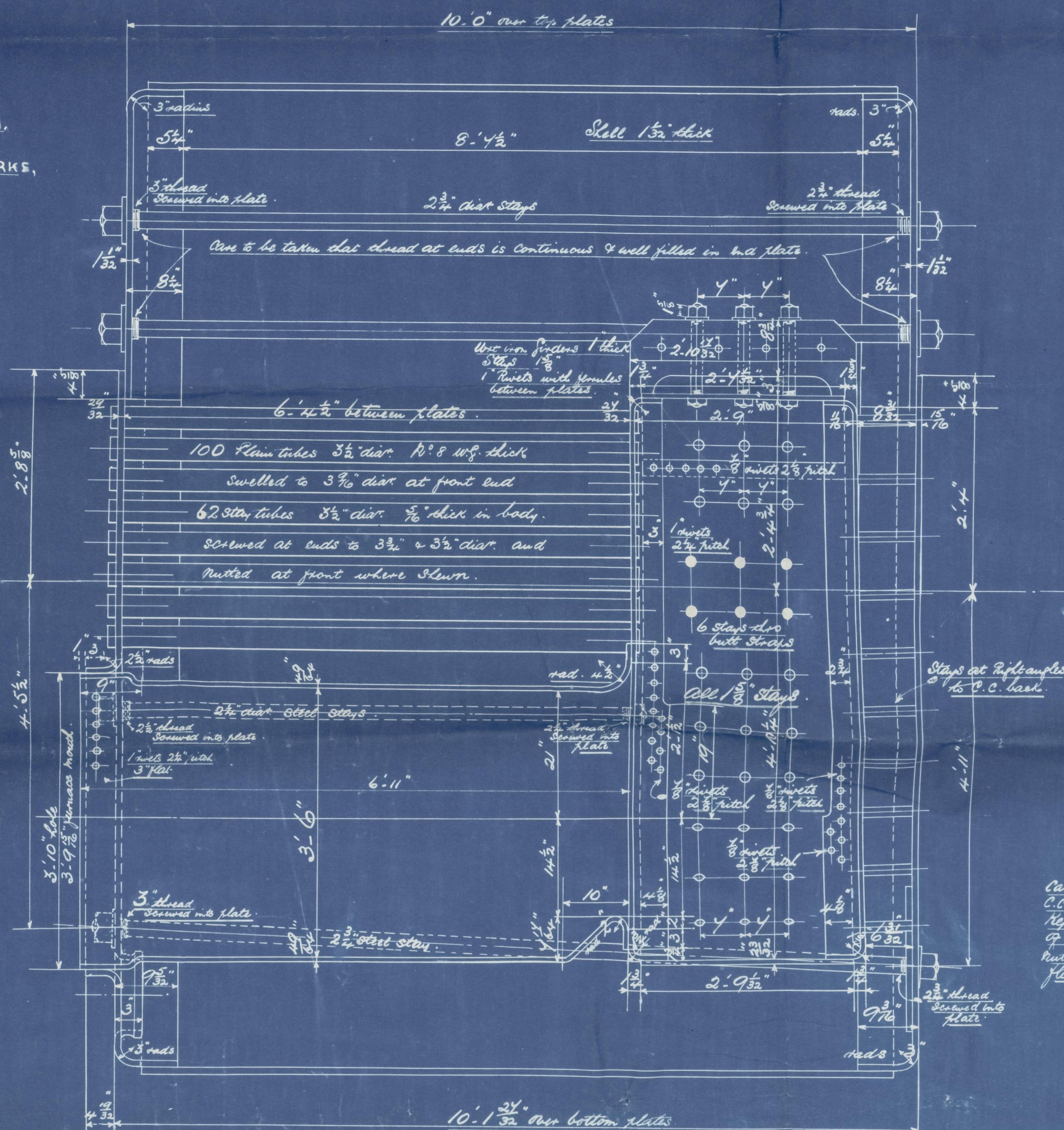
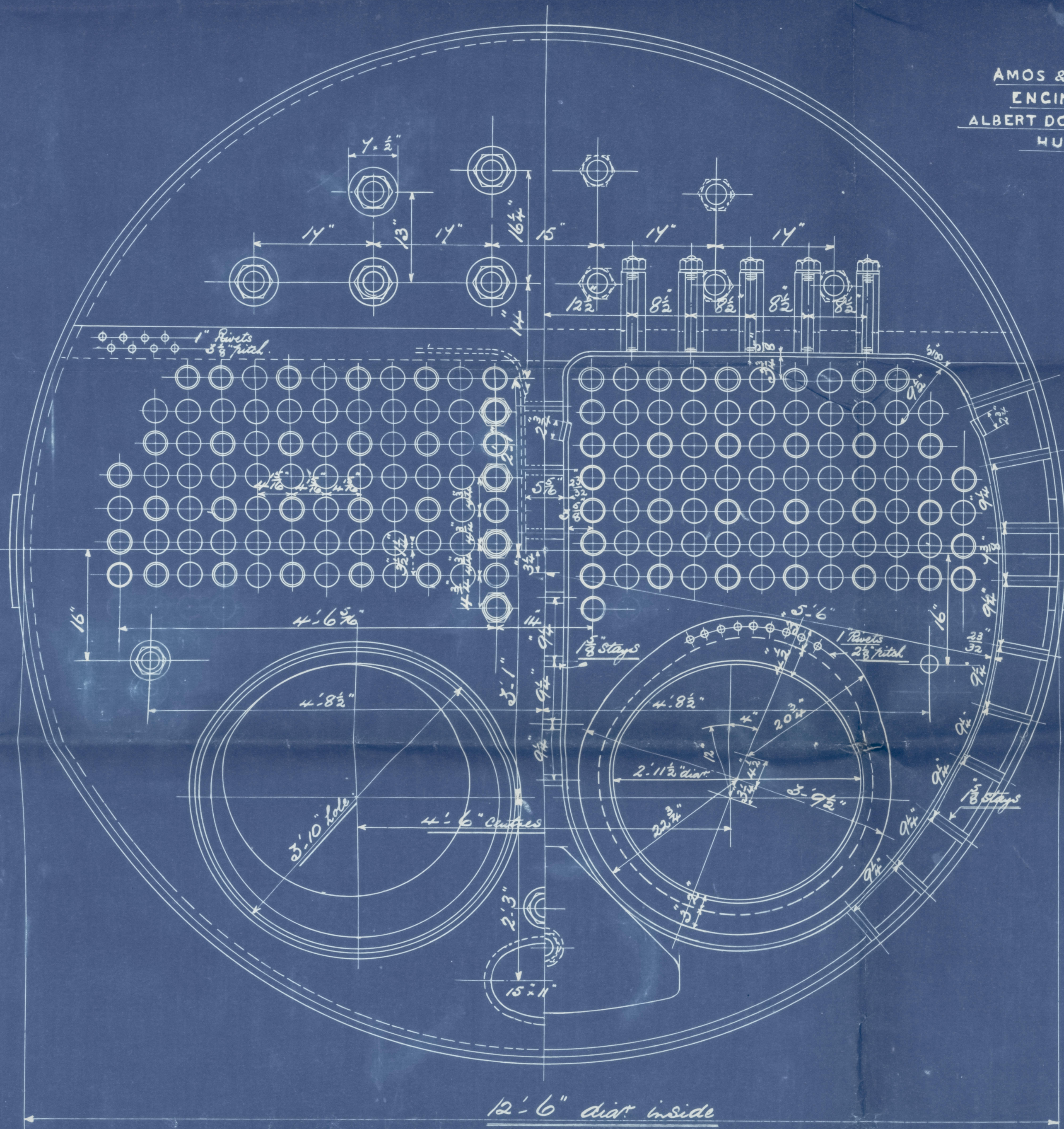
Note! The plates must be made of steel by the Siemens process
All rivets holes drilled throughout the boiler. Those in shell
after the plates are bent.
All flange plates to be annealed after the plates are bent.
Stays are not to be welded. Tubes are of iron.
The tensile strength of the shell plates to be between 28 & 32
tons per sq in.
The combustion chamber stays are screwed into head plates
& fitted with a nut at each end. Washers on outside
of shell only. Rivet inside C.C.

Particulars of Staying

Stays	Dia.	No. of stays per area sq. inch	sq. inch of area
Steam space stays	2 1/2"	6	5.055 sq.
Tube stays	2 1/2"	8	3.033 "
Bottom stay	2 1/2"	6	5.055 "
Stay tubes	3 1/2"	9	2.364 "
C. C. stays	1 1/2"	10	1.416 "
"	1 1/2"	10	2.394 "

R.

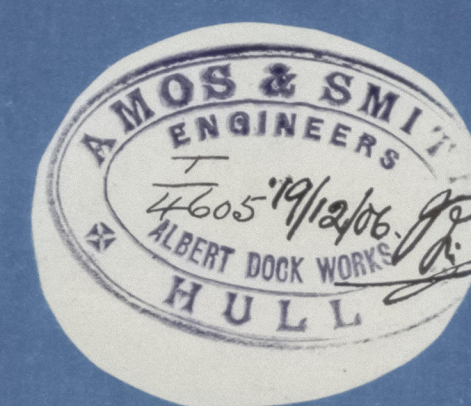
AMOS & SMITH,
ENGINEERS.
ALBERT DOCKWORKS,
HULL.



Care to be taken that
C.C. stays at the back are
kept sufficiently clear
of the round that full
nuts can be put upon the
flat plate

10150.

STEEL BOILERS N^{os} 1191-2-3.



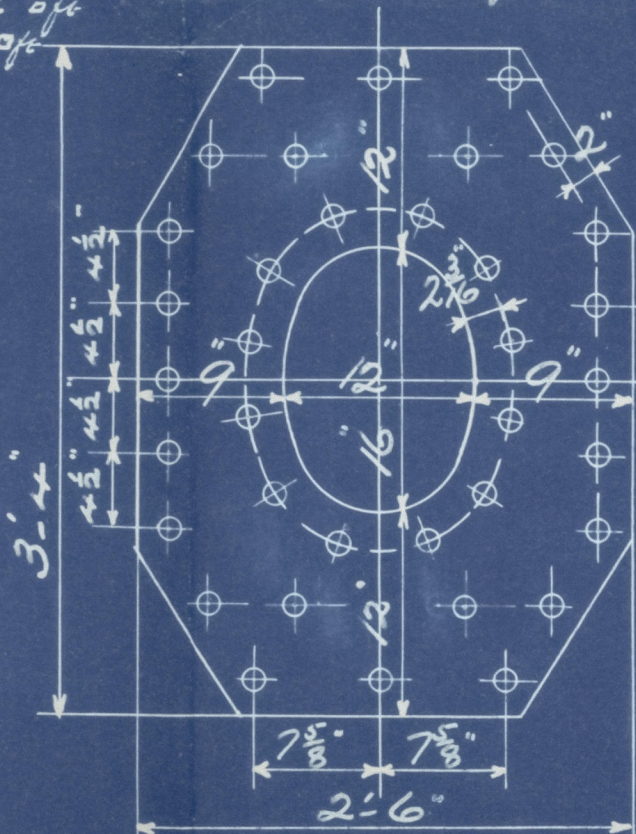
TITLE Steel Boilers
FOR WED. H. & B. Bacon & Co.
DATE 25/10/06
NO. 1191. 2. 3
IF MADE
SCALE 1/4" = 1'

W1547-0043

DIAM OF BOILER 12'-6" inside
 LENGTH OF DO 10'-1 3/8" over bottom plates
 NUMBER OF TUBES 162
 LENGTH OF DO 6'-4 3/8" between plates
 DIAM OF DO 3 1/2" AREA THRO TUBES 8.3 sq ft
 HEATING SURFACE IN TUBES 946 sq ft
 TOTAL HEATING SURFACE { Tubes, Furnaces, 1192 sq ft
 FIRE BAR SURFACE 5 ft bars 35 sq ft
 DIAM OF SAF VALVES 2 1/2"
 CUBIC FEET OF STEAM SPACE 260
 WORKING PRESSURE 180 lbs LLOYDS

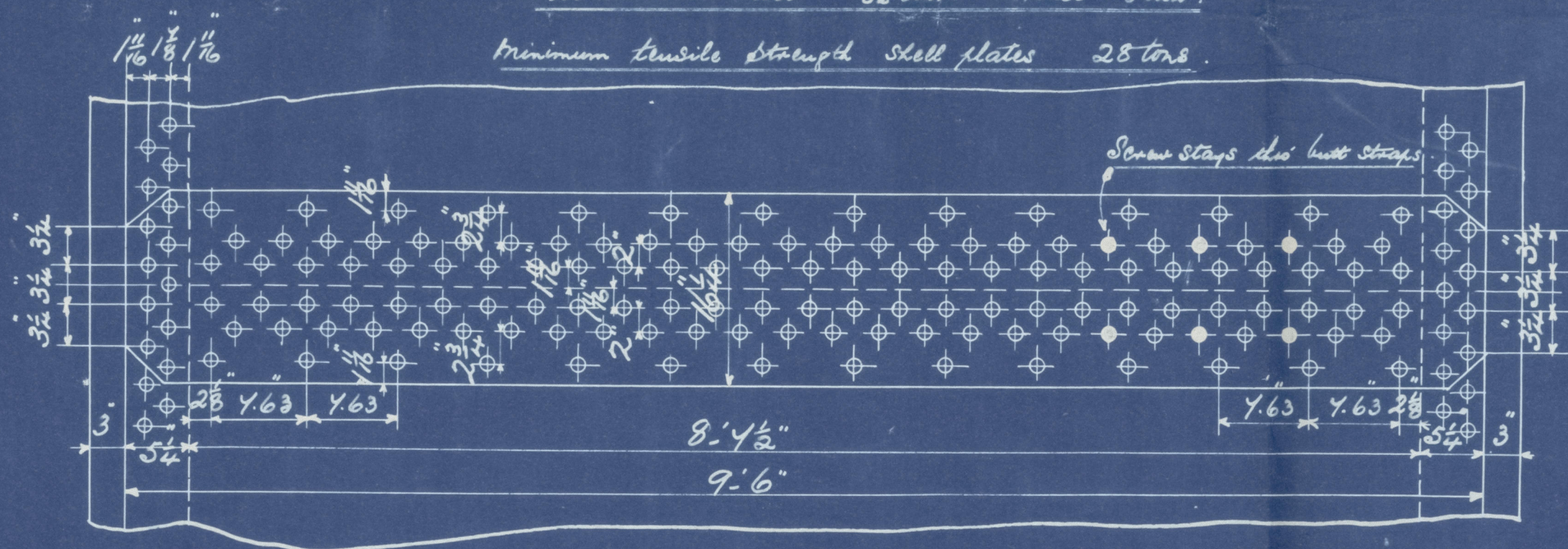
12.12.06

Doubling plates 1 1/2" thick
 Rivets 1 1/2" holes 1 1/2"
 Fitted outside shell with flange
 and longitudinally



Circumferential Seams 3/4" pitch
 7/8 plate 65.4
 7/8 rivets 50.0
 Longitudinal Seams 7/8 pitch
 7/8 plate 85.2
 7/8 rivets 92.0
 Double butt stays 1 1/2" thick
 All rivets in shell 1 1/2" dia. Holes 1 1/2" dia.

Minimum tensile strength shell plates 28 tons

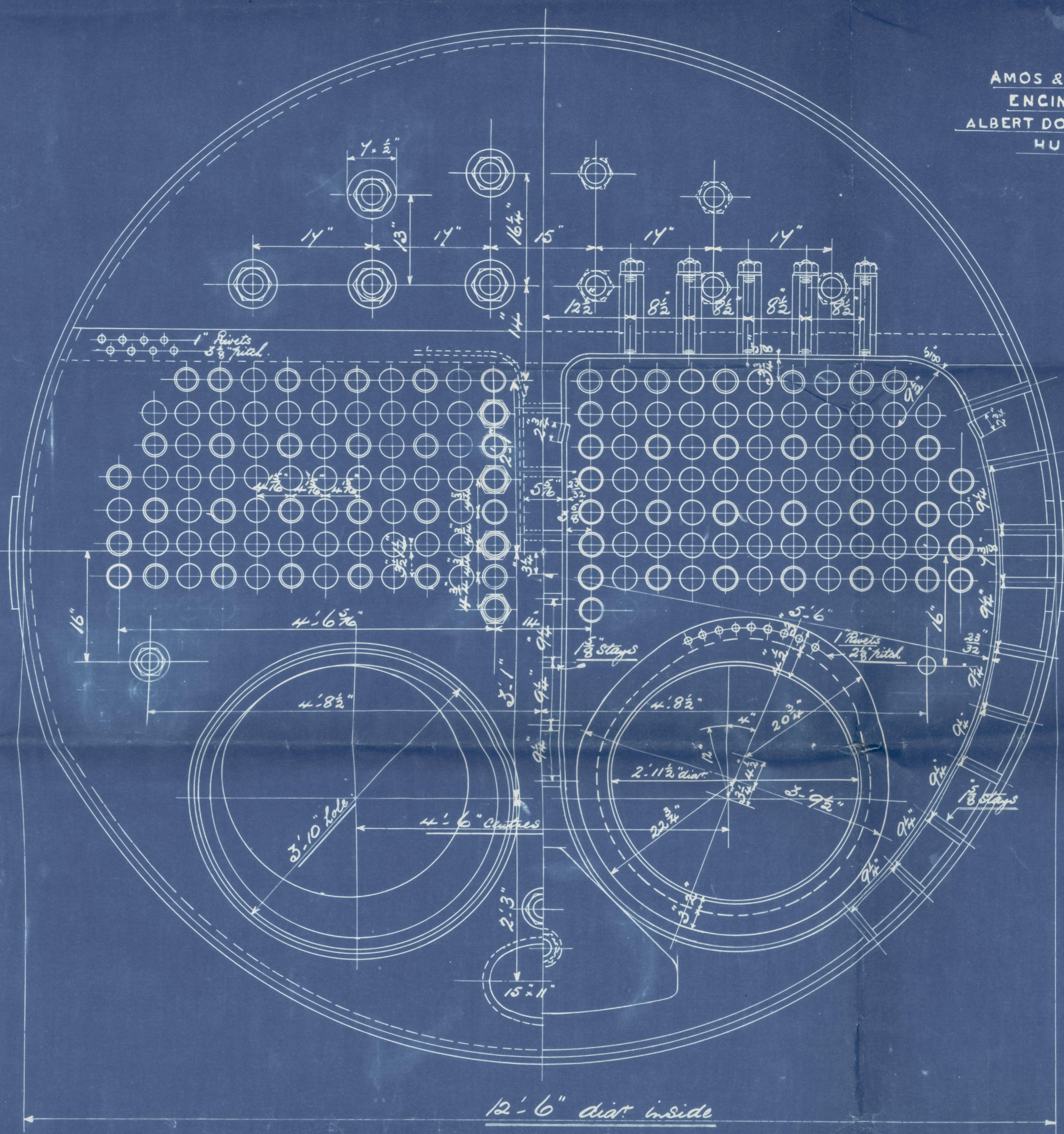


Note! The plates must be made of steel by the Siemens process
 All rivets holes drilled throughout the boiler. Those in shell
 after the plates are bent
 All flange plates to be annealed after the plates are bent
 Stays are not to be welded. Tubes are of iron.
 The tensile strength of the shell plates to be between 28 & 32
 tons per sq in.
 The combustion chamber stays are screwed into head plates
 & fitted with a nut at each end. Washers on outside
 of shell only. None inside C.C.

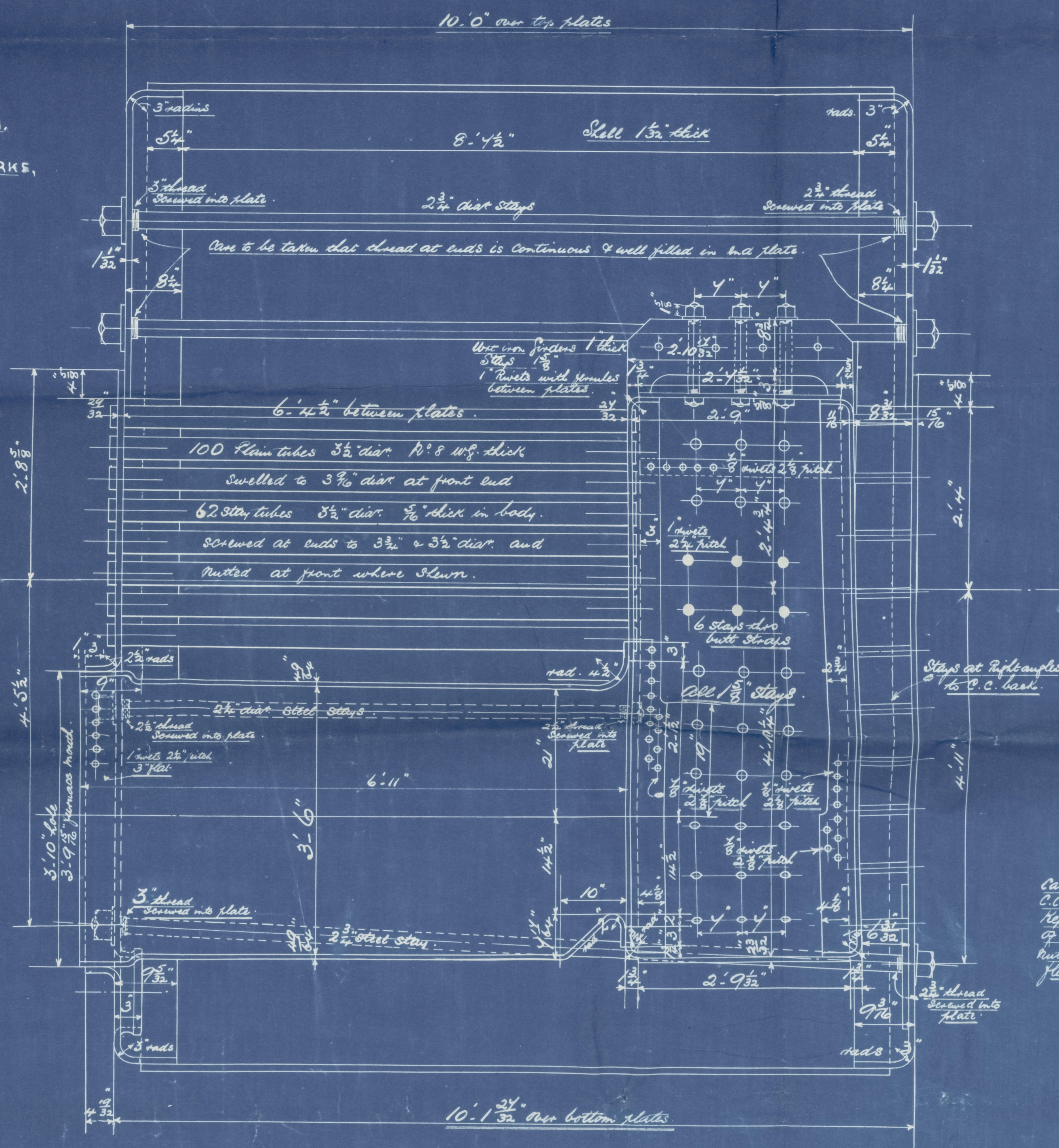
Particulars of Staying

Stays	Dia.	No. of stays per area sq inch	Net area sq inch
Steam space stays	2 1/2"	6	5.055
Tube stays	2 1/2"	8	3.28
Bottom stay	2 1/2"	6	5.055
Stay tubes	3 1/2"	9	2.364
C.C. stays	1 1/2"	10	1.46
	1 1/2"	10	2.446
	1 1/2"	10	2.394

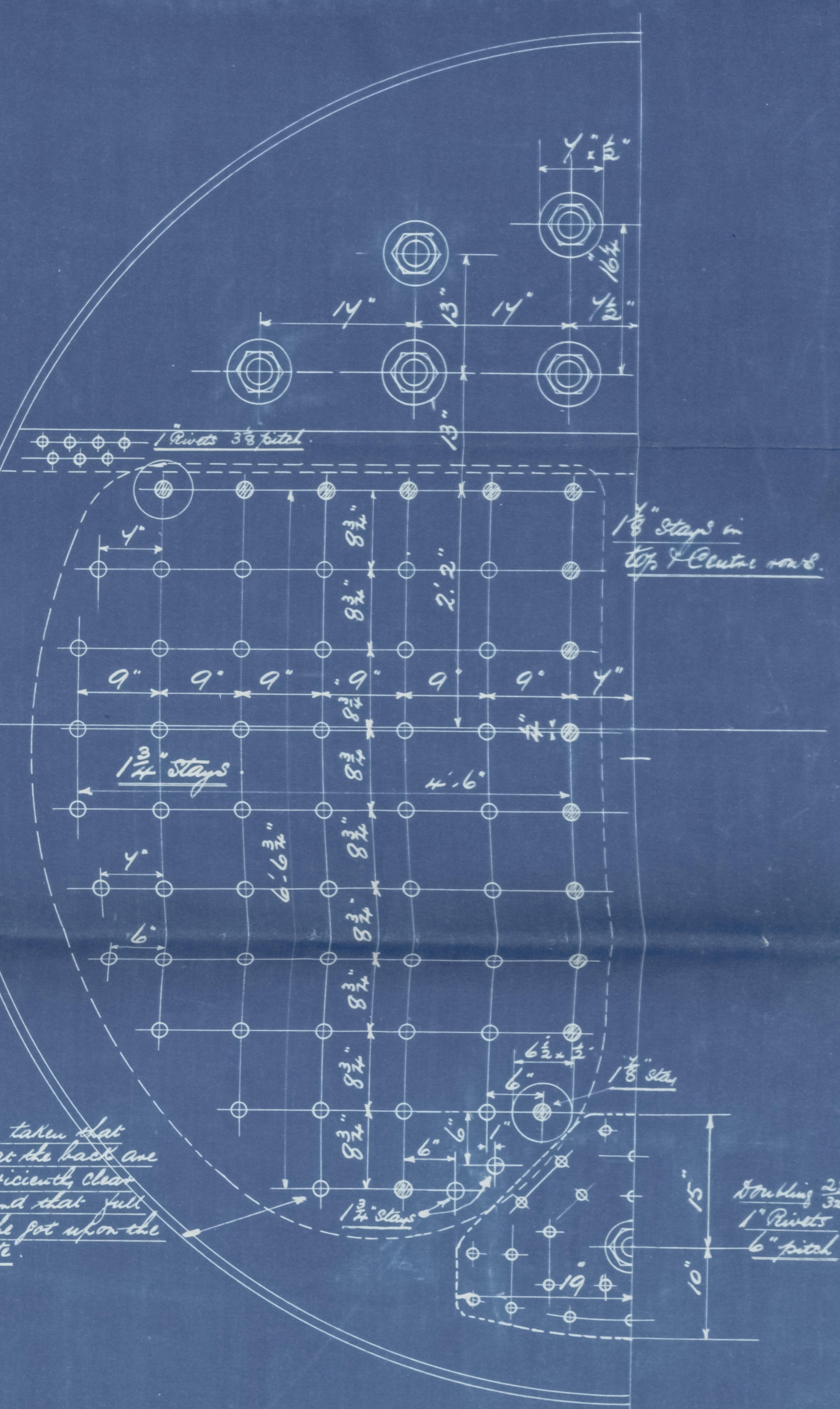
R.



AMOS & SMITH,
 ENGINEERS.
 ALBERT DOCKWORKS,
 HULL.

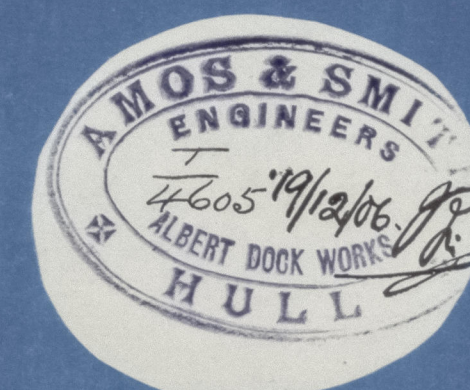


Care to be taken that
 C.C. stays at the back are
 kept sufficiently clear
 of the shell that full
 rivets can be put upon the
 flat plate.



10150.

STEEL BOILERS NOS 1191-2-3.



TITLE Steel Boilers
 FOR VESSEL No. 1191-2-3
 DATE 22/12/06
 ORDER NO. 1191.2.3
 IF MADE BY
 SCALE 1/4" = 1'

W1547-0043

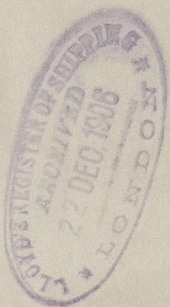
Amended Plan

Amos & Smith Hull

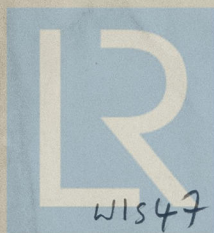
- Boilers Nos. 1191, 1192 & 1193

N. P. 18066

For
Cochran & Sons Nos. 393, 394 & 395



$\frac{5}{s}$ "Orlando"	Hull Report No.	18936
"Victoria"	"	18991
"Leander"	"	19026



© 2021

Lloyd's Register
Foundation

W1547-0043 1/2