

12-4-06  
2-5-06  
7-5-06  
11-5-06

NUMERALS:	
1/2 BREADTH	18.5 ✓
1/2 GIRTH	27.5 ✓
DEPTH	11.77 ✓
1 <sup>ST</sup> N°	57.77 ✓
LENGTH	210 ✓
2 <sup>ND</sup> N°	12131.70 ✓

19

— S.S. N° 90. —  
— MIDSHIP SECTION. —  
— STEEL SAILING BARGE. —

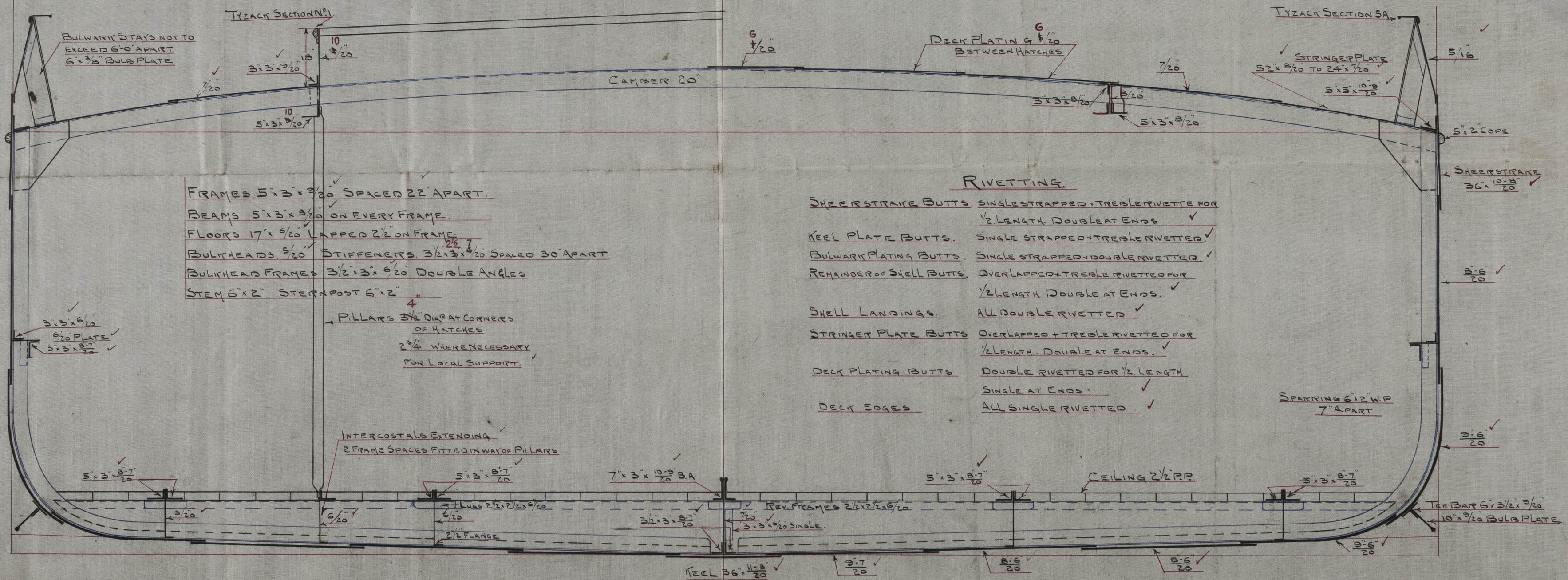
— DIMS: 210'-0" B.P. x 37'-0" x 11'-0" MOULDED. —

— SCALE 1/2" = 1 FOOT. —

TO CLASS ~~100~~ A.1. AT LLOYD'S  
FOR RIVER PLATE NAVIGATION

EQUIPMENT EACH

2 TROTMAN'S BOWER ANCHORS	2 3/2 CWTs Ea. STOCK
1 STREAM ANCHOR	8 " " "
180 FATHOMS	1 3/16 STUD CHAIN CABLE
30 "	3/4 WIRE
30 "	6 MANILLA
30 "	3 3/4 "
30 "	3 "



J.H.  
12/4/06



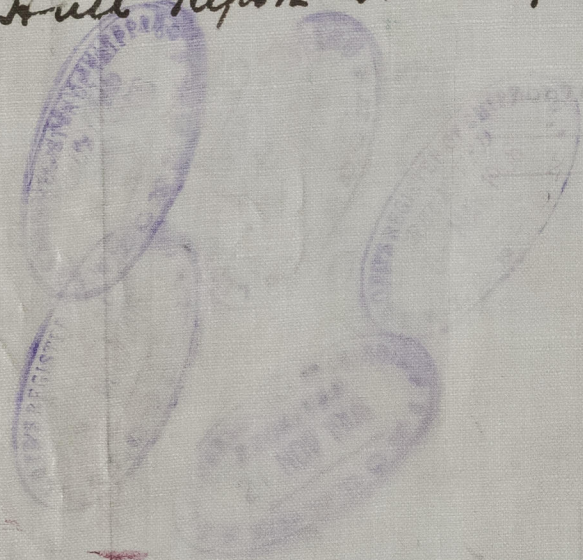
Escoe S. R. C. Sin

Nº 90

Midship Section

Sch. Oceanic

Hull Report no. 18519



REAR



© 2020

Lloyd's Register  
Foundation

W1546-0012