

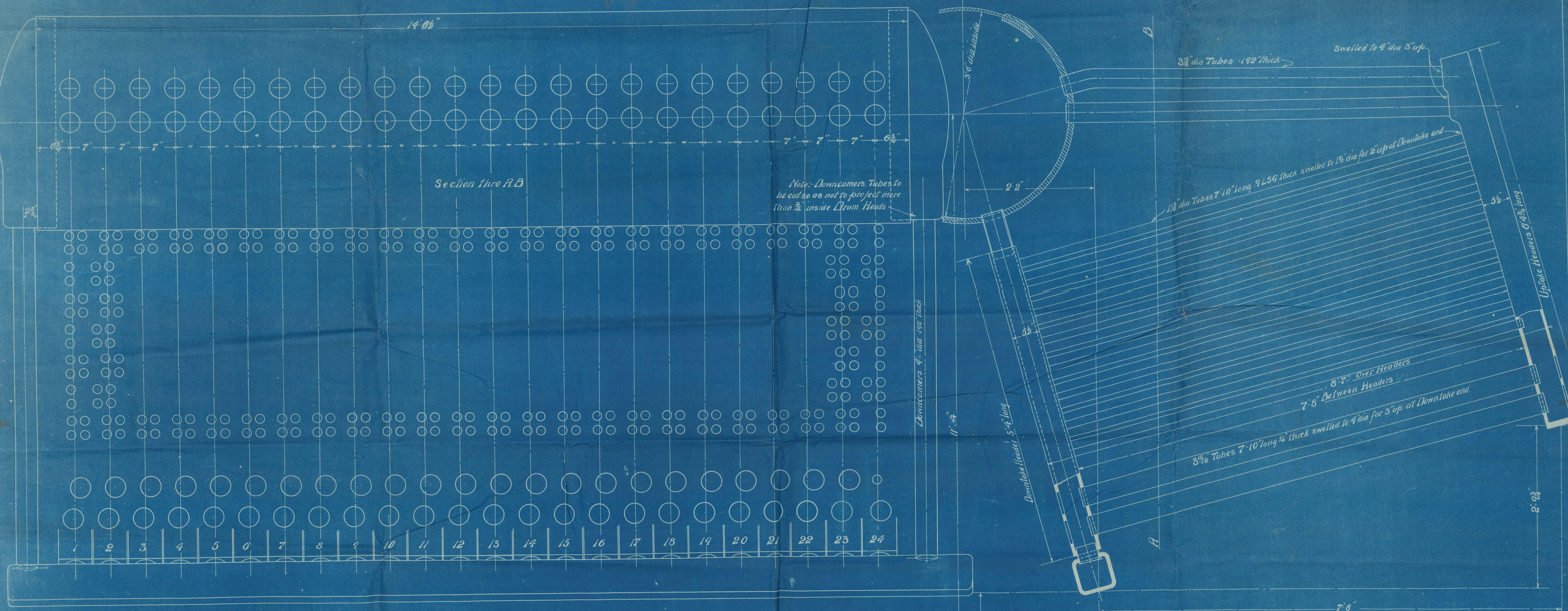
# ARRANGEMENT OF PRESSURE PARTS

Scale 1/2 inches = 1 Foot

WORKING PRESS: 200 LBS PER SQ IN.  
TEST " 400 " " " "

13: 7:04  
for place  
other 13:04  
11: 7:04  
10: 7:04  
9: 7:04  
8: 7:04  
7: 7:04  
6: 7:04  
5: 7:04  
4: 7:04  
3: 7:04  
2: 7:04  
1: 7:04

GROUP



List of Material for 1 Boiler		No Req
Steam & Water Drum to D' N° 1310/5		1
Muddrum " " " " 8		1
Uptake centre Headers " " " 3 B		22
" side " " " 3 A		1
" " " " 3 C		1
Downtake centre Headers " " " 3 E		22
" side " " " 3 D		1
" " " " 3 F		1
Tubes 1 1/8" dia x 7'10" long 9 LBS thick swelled to 1 1/8" at one end for 2' up		657
" 3/8" " 7'10" " 1/4" " " 4" " " 3"		47
Top Return Straight Tubes 3/8" dia x 6'6" long 192" thick swelled to 4" at one end for 3' up		24
" Bent " " x 6'6" " 192" " " " " " " "		24
Circulating Nipples 4" dia x 10" long 192" thick		24
Nipples 4" x 3 3/4" " 192"		24
Downcomers 4" x 6'3 1/2" " 192"		2
Handhole Fittings 4 1/4" Square to D' N° 401/204		487
Zincs in Muddrum " " " 1310/8		6
Nozzles for Main Steam " " " 401/36		1
" Safety valve " " " "		1
" Main Feed " " " "		1
" Aux " " " "		1
" Scum valve " " " "		1

BABCOCK & WILCOX LTD  
MARINE DEPT  
ORIEL HOUSE FARRINGTON ST  
E.C. LONDON E.C.

R 284  
6

JOB N M100  
DR NO 1316/7

DATE 7-7-04

OFFICE COPY



Babcock Wilcox  
Borden M 100.

Montcalm  
S. S. Montcalm  
Glasgow rht No 22300



W 052020127

Lloyd's Register

Information



To be Answered by  
Recd 11 JUL 1904  
For Attention by

W1537-0129



© 2020

Lloyd's Register  
Foundation