

Nº 498. 9. 500. 1. 2

Nº 498. 9. 500. 1. 2

DIMENSIONS

DIMENSIONS		1 BOILER
LENGTH OF FIRE BARS	—	4'-6"
AREA OF FIRE GRATE	—	25' 5 1/2"
DIAM. OF TUBES OUTSIDE	—	3 1/2"
LENGTH OF TUBES <i>between flanges</i>	—	5'-9"
NO. OF TUBES	—	112
AREA THROUGH TUBES	—	2.47 sq ft
SURFACE OF TUBES	—	560 sq ft
TOTAL HEATING SURFACE	—	450 sq ft
WORKING PRESSURE	—	200 LBS.

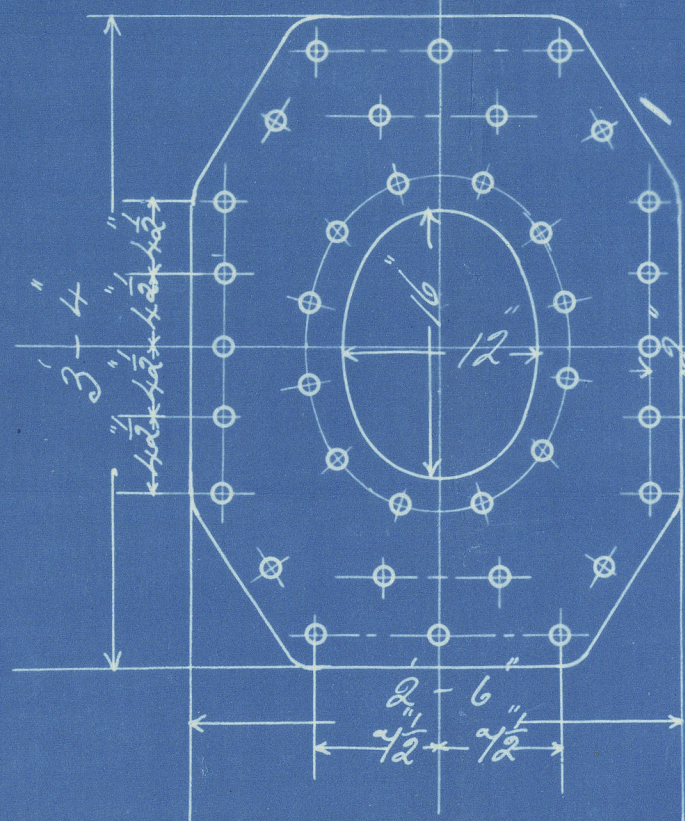
WORKING PRESSURE = 200 LBS. (LLOYDS.)

SCALE 1" = 1 FOOT

PLAN OF SHELL RIVETING
16 HOLES $\frac{1}{2}$ PITCH

PERCENTAGE OF PLATE = 85.3%
" " RIVET = 90.8%

DOUBLING PLATE ROUND MANHOLE
1" THICK



ALL 1/8 RIVET HOLES
INNER ROW
COUNTERSUNK.

1 1/6 Holes
3 1/4 PITCH

SHELL | THICK
INSIDE BUTT STAMP } | THICK
OUTSIDE " " } $\frac{3}{4}$ "
TENSILE STRENGTH = 28 TO 32
TONS PER SQ INCH

STEEL STAYS 2 3/8" EFFECTIVE DIAM 7/16" THREADS
PER INCH + 2 3/8" DIAM IN BODY & SCREWED
AT END TO 2 3/8" + 3" & TAPPED INTO BOTH ENDS
27 TO 32 TONS TENSILE STRENGTH

IRON ORDINARY TUBES 3 $\frac{1}{2}$ " EXT DIAM NO 8 LSG THICK
IRON STAY TUBES 3 $\frac{1}{2}$ " EXT DIAM 5 $\frac{1}{16}$ " THICK EFFECTIVE 8
3 $\frac{1}{8}$ " THICK IN BODY SCREENED EXTENDS TO 2 $\frac{1}{2}$ " & 3 $\frac{1}{2}$ "
10 THREADS PER INCH

ORDINARY TUBES SWELLED 1/16 AT FRONT END
NUTS TO BE FITTED ON STAY TUBES WHERE SHOWN

2" 24 STEEL STAY THREADED INTO BOTH ENDS
24 THREAD 27 TO 32 TONS TENSILE STRENGTH.

BACK TUBE PLATE TO BE
FACED FOR RECEIVING
FURNACE →

1-4-17- STEEL STAY THREADED INTO BOTH END

ТОВАР 6^нх4^нх

DOUBLE STEEL BARS
 $7\frac{1}{8} \times 7\frac{1}{2}$
BUTTERED TOGETHER

NO WASHERS TO BE
FITTED UNDER NUTS
INSIDE COMB^{AS} OHMMB

ALL $\frac{1}{2}$ " STAYS (STEEL
EXCEPT THOSE SHOWN
IN SECTION WHICH ARE
 $\frac{3}{4}$ " DIAM, 10 THREADS
PER INCH.

INSIDE WASHER
2 1/2" x 1 5/16" THICK

OUTSIDE WASHERS
5" DIAM \times $\frac{1}{2}$ " THICK

OUTSIDE WASHERS
7" DIAM x $\frac{1}{2}$ " THICK

MINIHOLE FLANGED
INWARDS FLANGE TO BE
THICKENED

INSIDE WASHER 12 DIAM $\times \frac{15}{16}$ THICK.

9-3 TOTAL LENGTH

№ 498 · 9 · 500 2021

© 2021 Lloyd's Register Foundation
www.lloydregister.com

Earle's Co to
Main Boilers
No 498-9. 500. 1 & 2

N. P. Books



s/s "Bute"
Hull Report No-17006

s/s Arran
Hull Report No-17036.

RETAIR



© 2021

Lloyd's Register
Foundation

W1536-0036