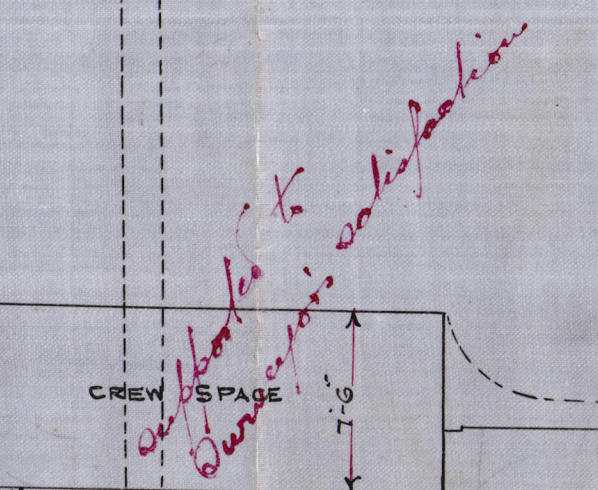


[illegible]

FRAMES SPACED 24" APART. ALL FORE & AFT.

— LONGITUDINAL ELEVATION —

— N° 407. 350' X 44' X 26'-6" K. TO B. —

— SCALE  $\frac{1}{8}$ " = 1 FOOT. —

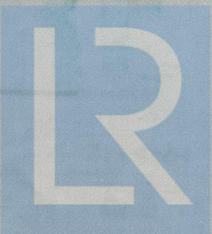
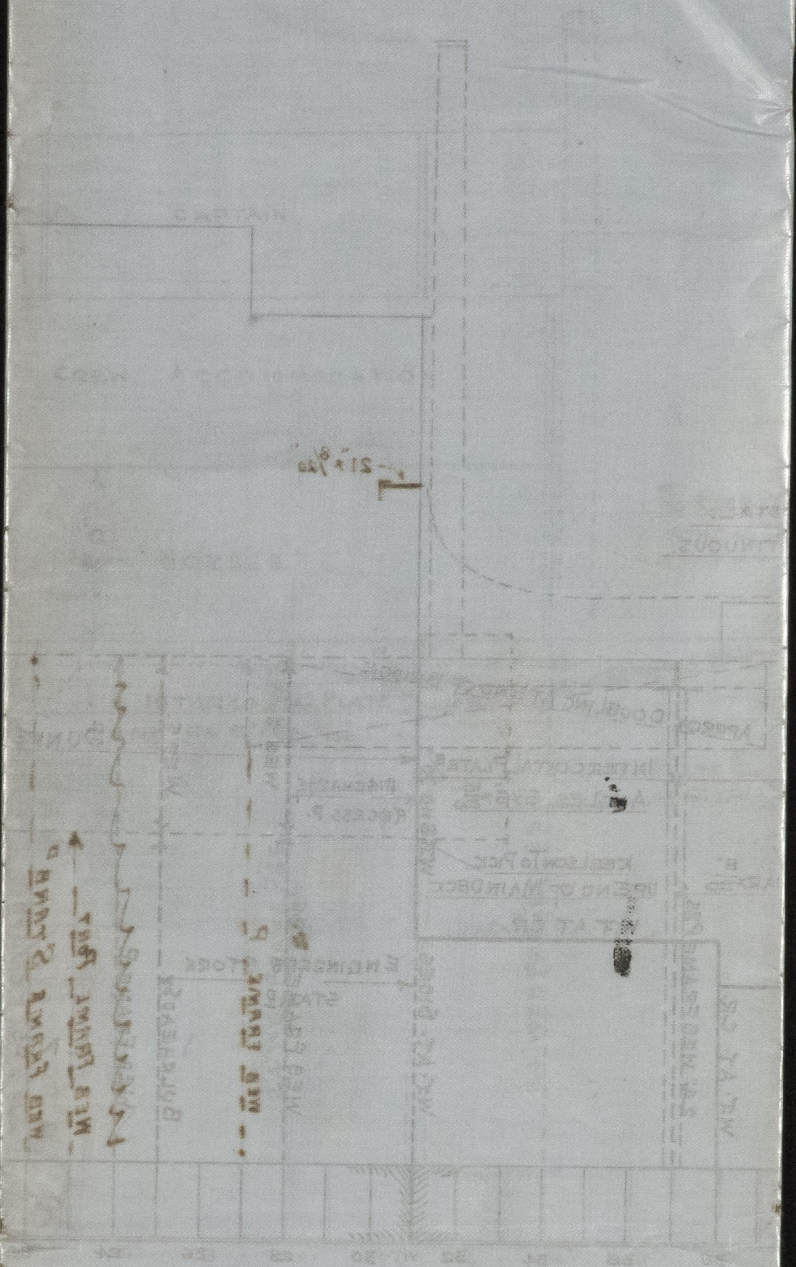
C.B.  
3.9.08.



Messrs. Harland & Wolff.

No. 407.

2<sup>nd</sup> Amended Profile



© 2020

Lloyd's Register  
Foundation

was 240091