

Nº 407. MIDSHIP SECTION
S.S. 350'-0" x 44'-0" x 26'-6" TOP OF KEEL TO UPPER DECK

SCALE $\frac{1}{2}'' = 1 \text{ FT}$

— TO CLASS 100 A.I. AT LLOYDS —

—THREE DECK

$$\text{FRAMING } N^{\circ} 44 \cdot 10 + 33 + 22 \cdot 0 + 26 \cdot 5 + 33 + 17 \cdot 7 = 86 \cdot 43$$

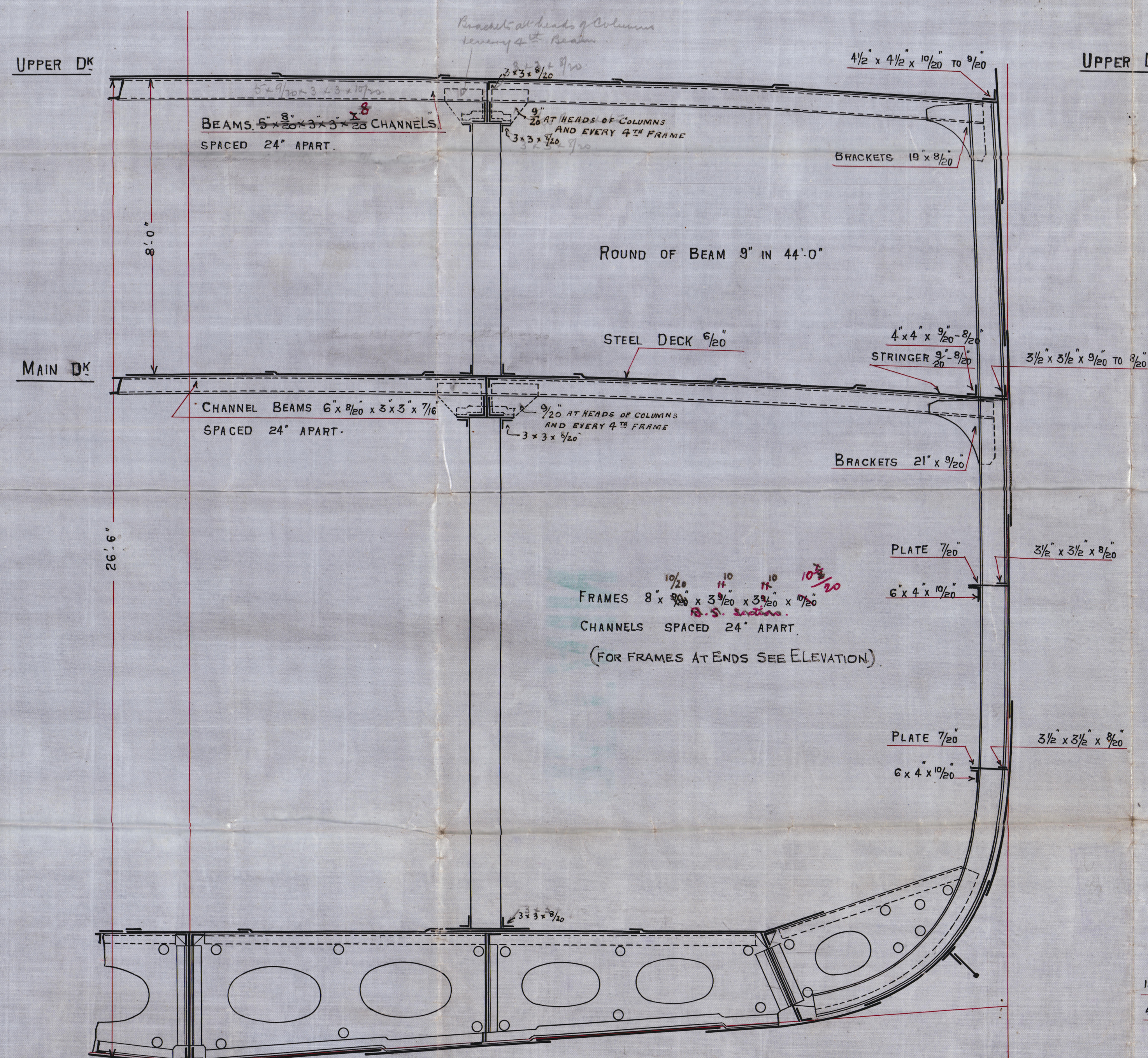
PLATING № 86.43 x 348.17 = 30092

EQUIPMENT № 35779.

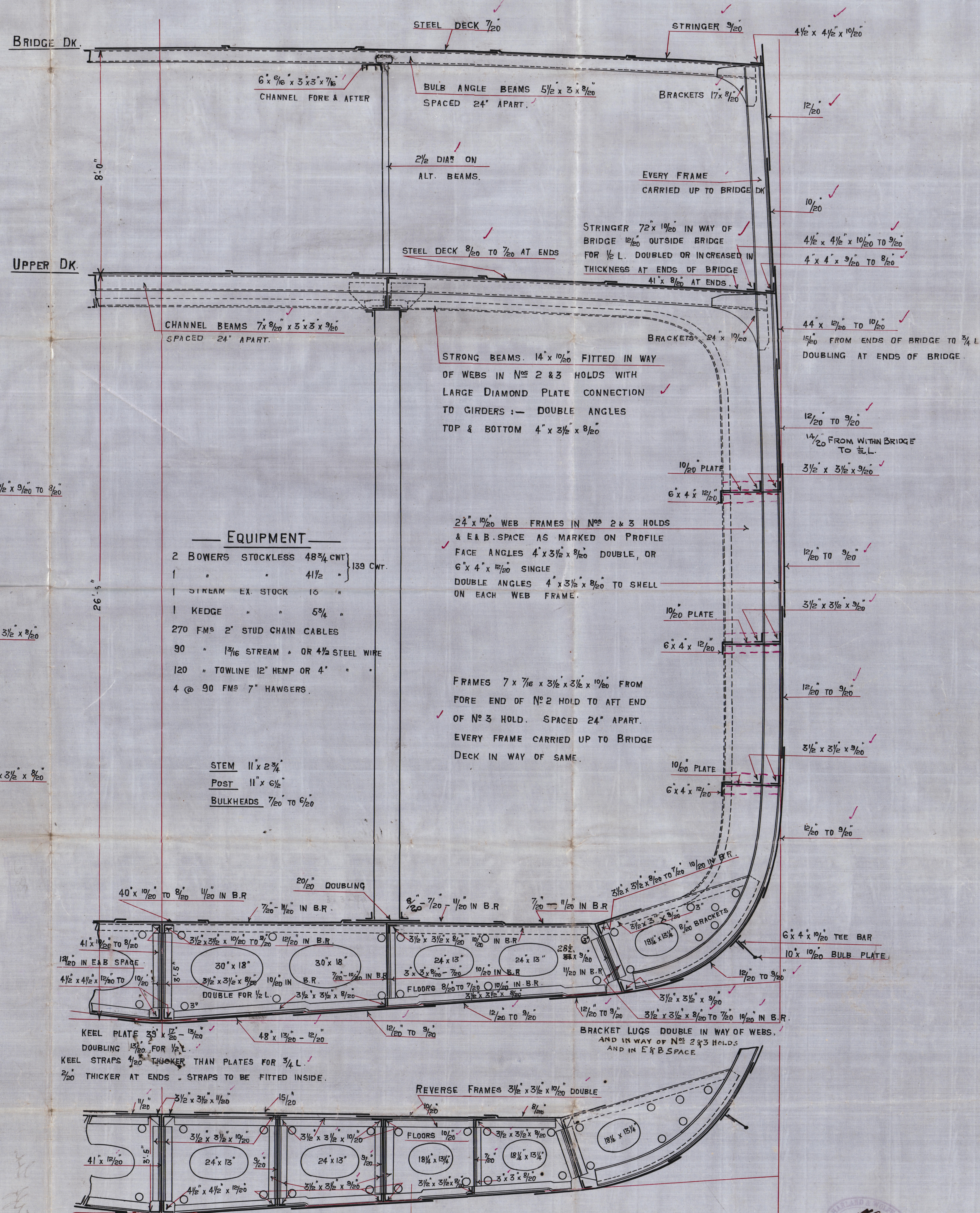
PROPORTIONS

LENGTH TO DEPTH. UPPER DK 12.97

BREADTH = 7.91



SECTION IN WAY OF MAIN DECK



—SECTION IN WAY OF ENGINE SPACE—

C.L.
20-8-08

22/8/08

Harland + Wolff Ltd.

No 400.

Midship Section

Amended.



© 2020

Lloyd's Register
Foundation 90