

DRN 15125

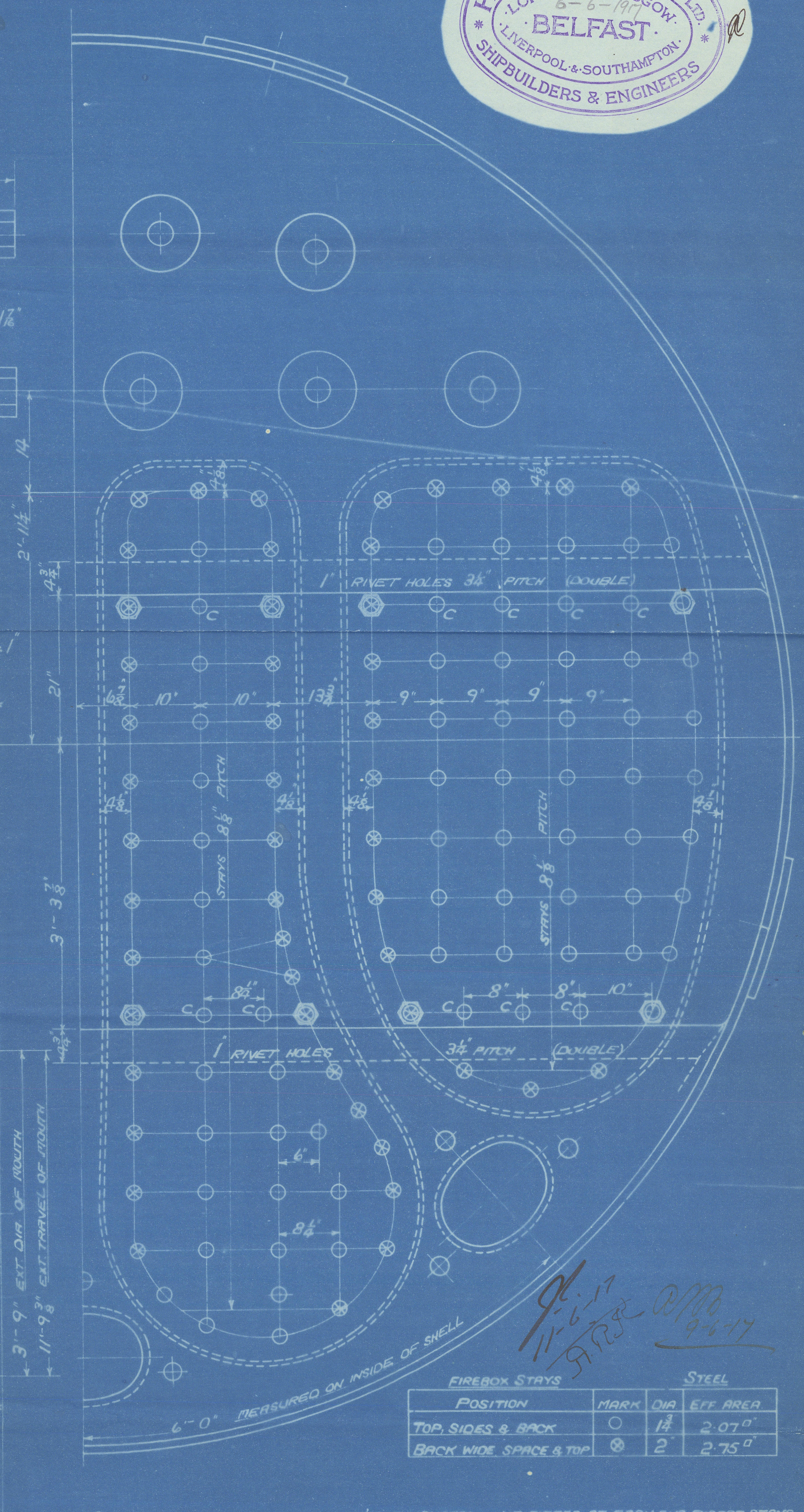
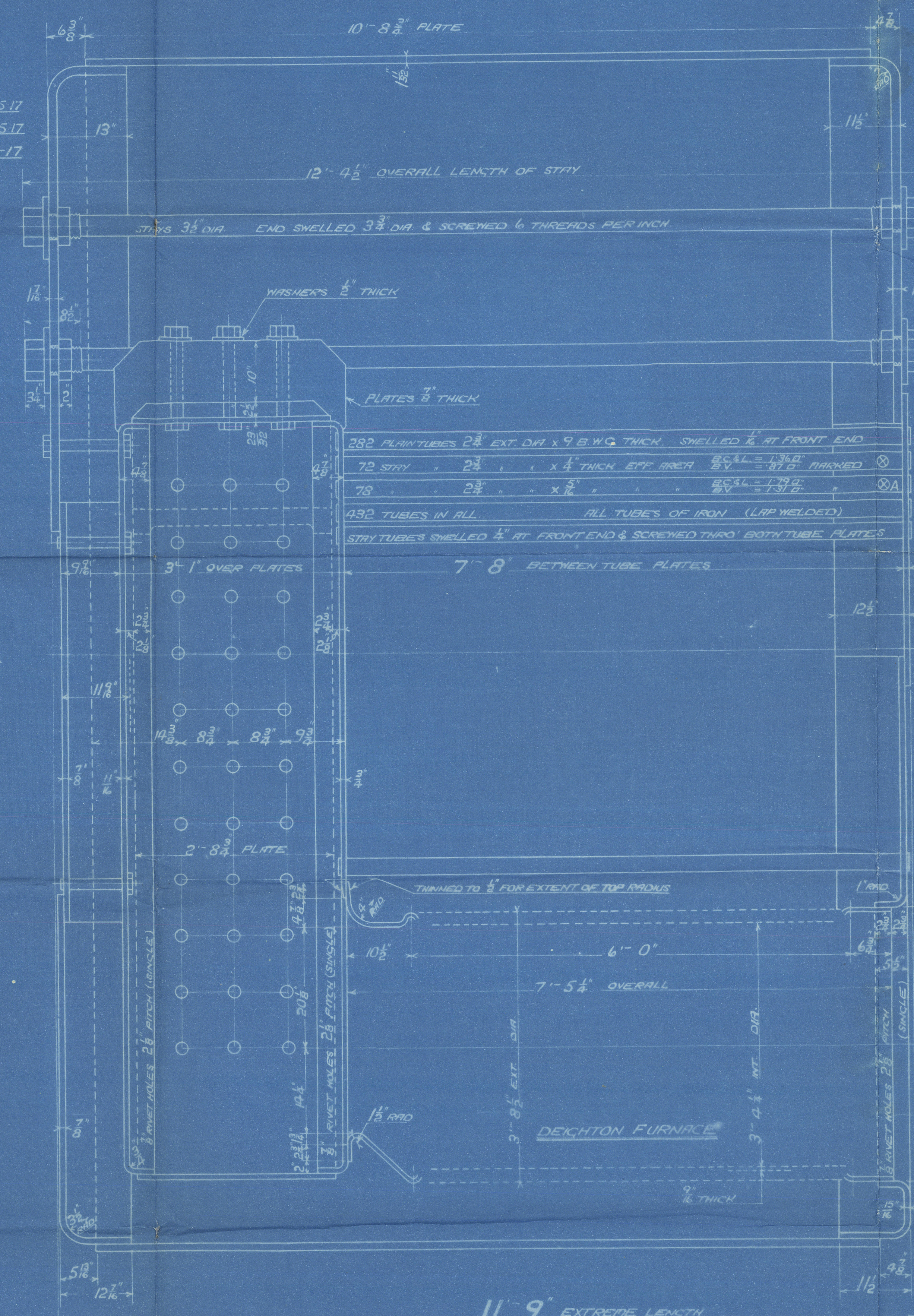
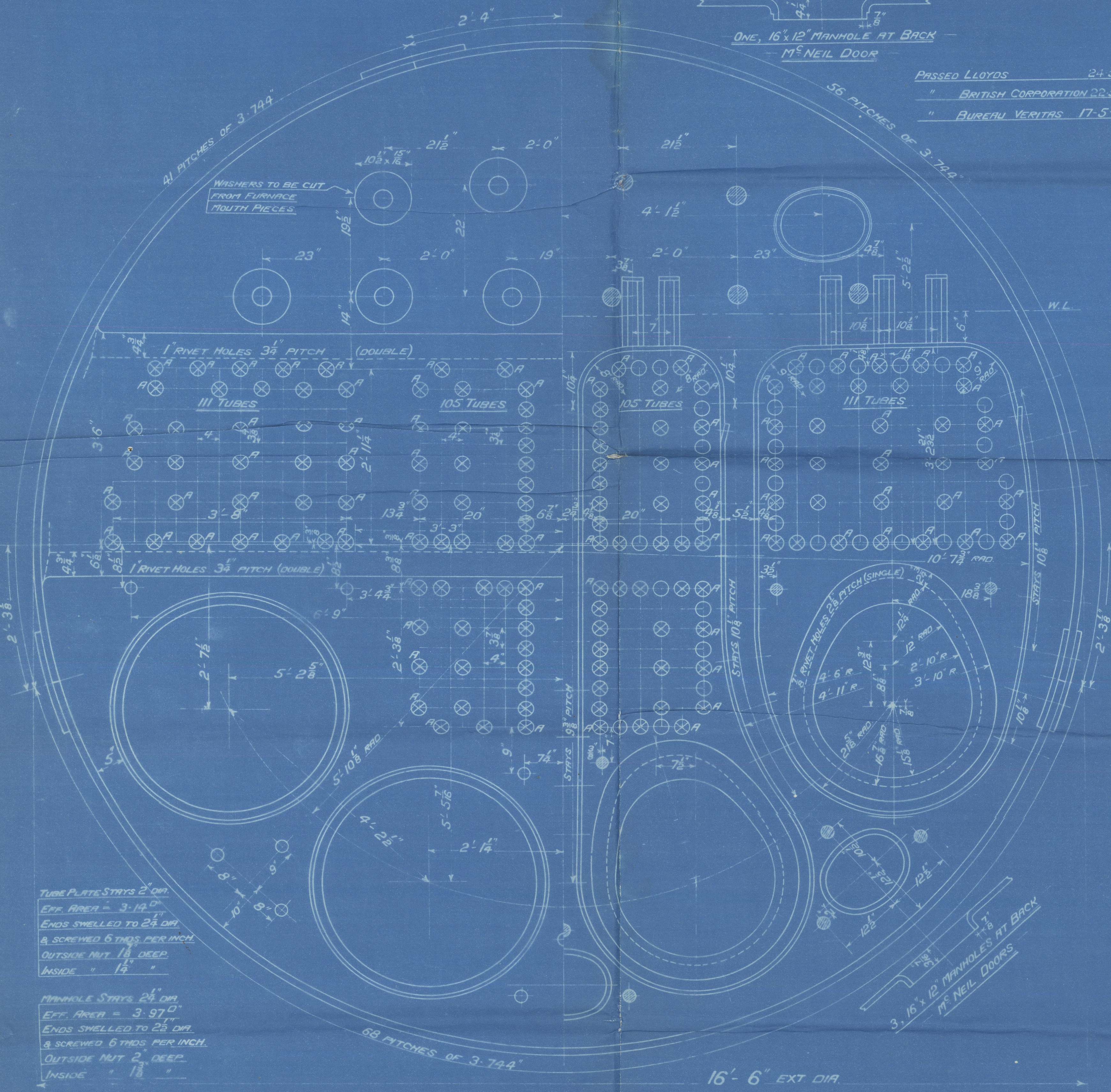
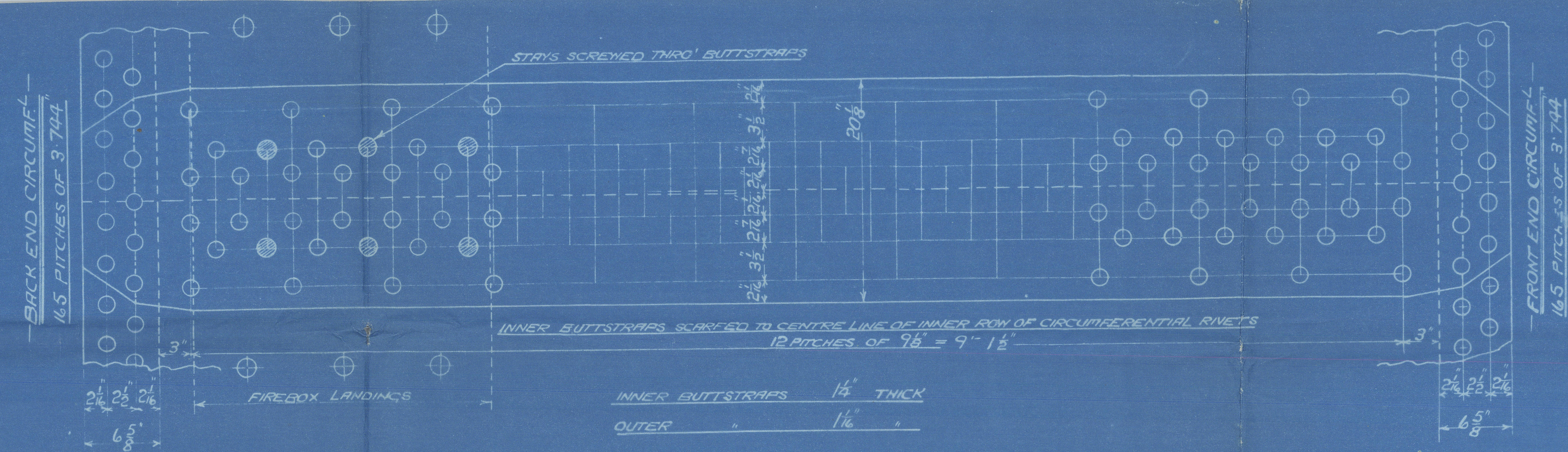
SURFACES		ONE BOILER	2 BOILERS
TUBES		2378	4756
FIREBOX TOP & SIDES		216	432
BACK		95	190
TUBE PLATES		64	128
FURNACES		188	376
TOTAL HEATING SURFACE		2941	5882
GRATE AREA (5" x 6" BARS)		74	148
TUBE AREA		13	26
WATER		165	330
STEAM SPACE		510	1020
GRATE AREA HEATING SURFACE		1:39.8	
TUBE		1:32.1	
WATER		1:2.23	
STEAM SPACE		1:6.9	
% BOILER ABOVE FIREBOX		29.8	
WEIGHT OF WATER		53 TONS	66 TONS

RIVETING		LONG	END CIRC
RIVET HOLE DIA.		18	18
PITCH		9.125	3.744
% PLATE		85	63.2
% RIVET		90	91

LIMITS OF TENSILE STRENGTH & MATERIAL		
SHELL & BUTTSTRAPS	28 3/4 TO 33 TONS	
GIRDERS	28 " 32 "	
OTHER PLATES	26 " 30 "	
FURNACES	26 " 30 "	
MAIN STAYS	28 3/4 " 33 "	
SCREWED STAYS	28 " 30 "	
RIVET BARS	27 " 31 "	

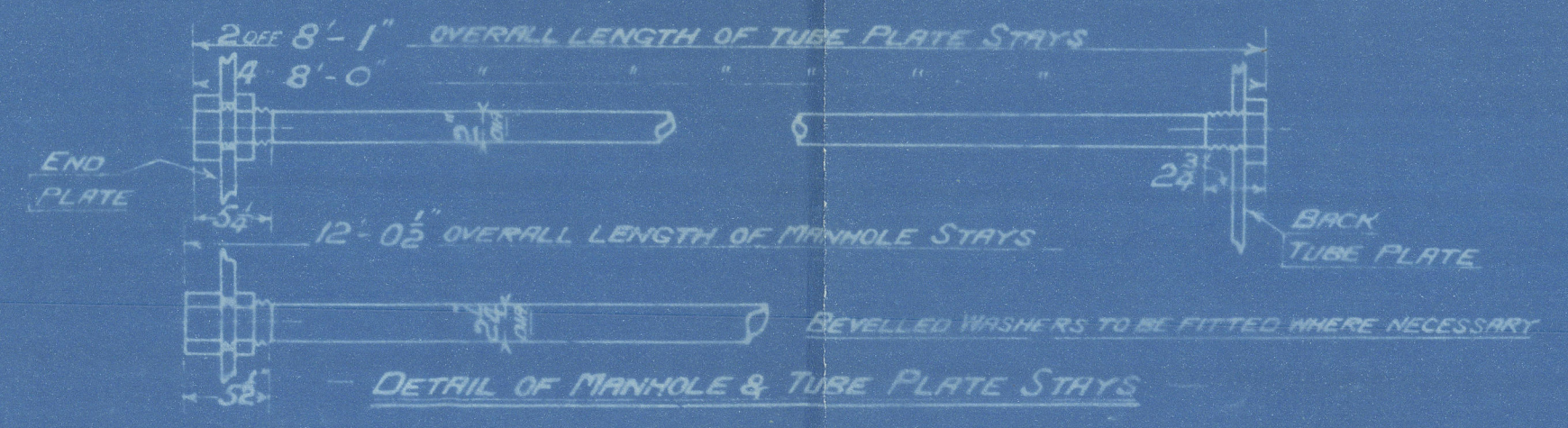
ALL RIVET HOLES DRILLED IN PLACE.  
MAIN STAYS SWELLED AT ENDS BY  
HYDRAULIC PRESSURE AND ANNEALED.

PASSED LLOYDS 24.5.17  
" BRITISH CORPORATION 22.5.17  
" BUREAU VERITAS 17.5.17



TUBE PLATE STAYS 2" DIA.  
EFF. AREA = 3.14  
ENDS SWELLED TO 2 1/2" DIA.  
& SCREWED 6 THDS PER INCH  
OUTSIDE NUT 1 1/2" DEEP  
INSIDE " 1 1/4"

MANHOLE STAYS 2 1/2" DIA.  
EFF. AREA = 3.97  
ENDS SWELLED TO 2 1/2" DIA.  
& SCREWED 6 THDS PER INCH  
OUTSIDE NUT 2" DEEP  
INSIDE " 1 1/2"



MAIN BOILER  
2 OFF ONE AS DRAWN ONE TO OPP. HAND } FOR EACH SHIP  
D CLASS STANDARD VESSELS  
WORKING PRESSURE = 180 LBS PER SQ. INCH  
TO PASS LLOYDS SURVEY  
SCALES, 1" & 1 1/2" = ONE FOOT

ALL FIREBOX STAYS SCREWED THRO' BOTH PLATES & NUT FITTED AT EACH END EXCEPT STAYS FROM WING FIREBOX TO SHELL AND STAYS MARKED 'C' IN BACK CENTRE PLATE WHICH PROJECT 8" AND ARE CALKED.  
ALL 1 1/2" NUTS 1" DEEP EXCEPT ON GIRDER TOPS WHERE THE OUTSIDE NUTS ARE 1 1/2" DEEP  
ALL 2" NUTS 1 1/2" DEEP

FIREBOX STAYS		STEEL
POSITION	MARK	EFF. AREA
TOP SIDES & BACK	○	1 1/2 2.07
BACK WIDE SPACE & TOP	⊗	2 2.75

DAVID ROWAN & CO'S  
REFERENCE  
01 240078  
Lloyd's Register  
THIRD 21st JAN 1917



Becket

Harland & Wolff Ltd

D. Standard Book Co

No 536-7

Mar. Bullen

S.S. War Buckler

Ref 7973.

S.S. War Tabard

Ref 7980

Please return in  
London office

WM

RETAIN



Lloyd's Register  
Foundation

W1528-0066



© 2021

Lloyd's Register  
Foundation

W1528 - 0066