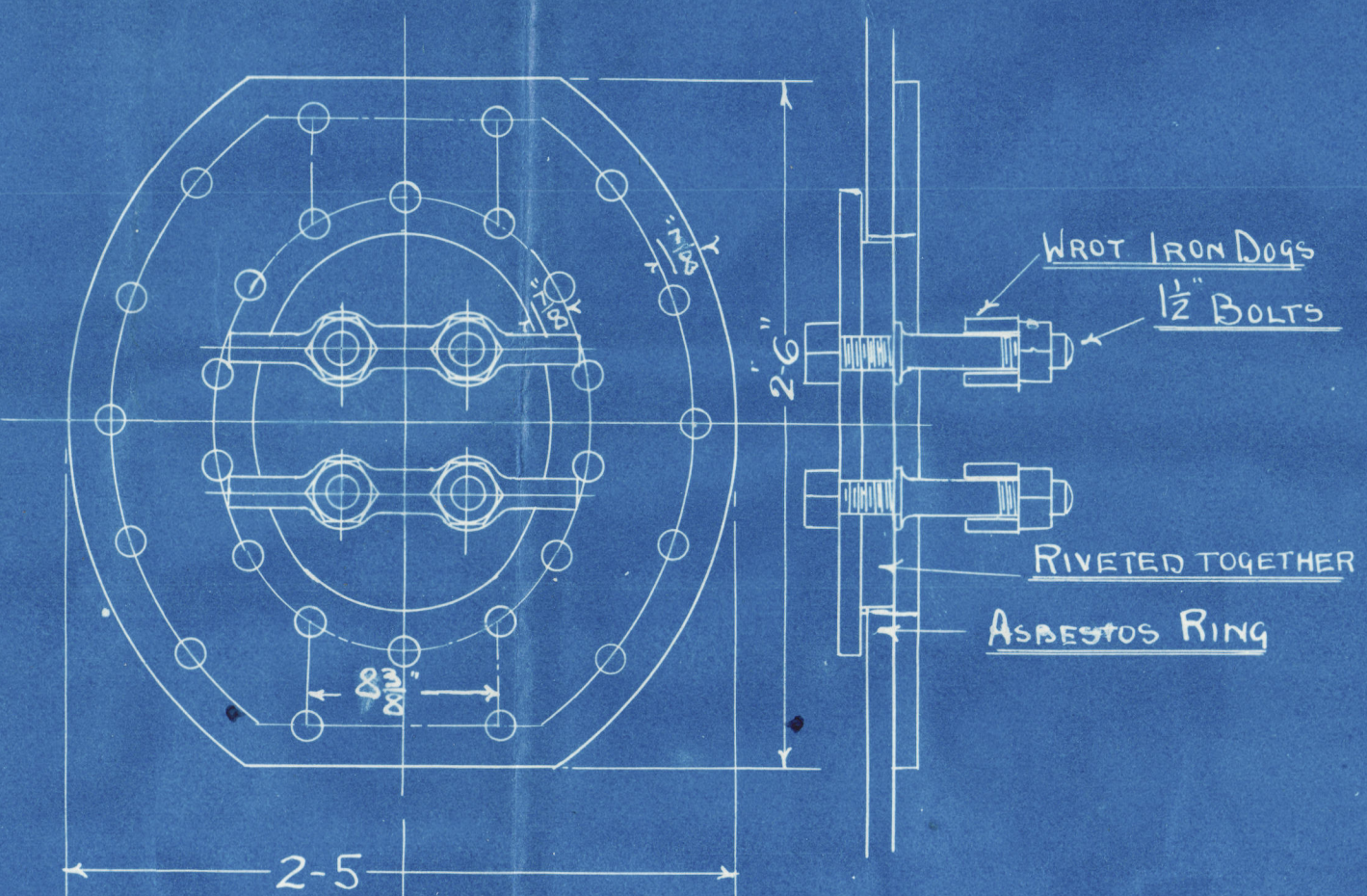
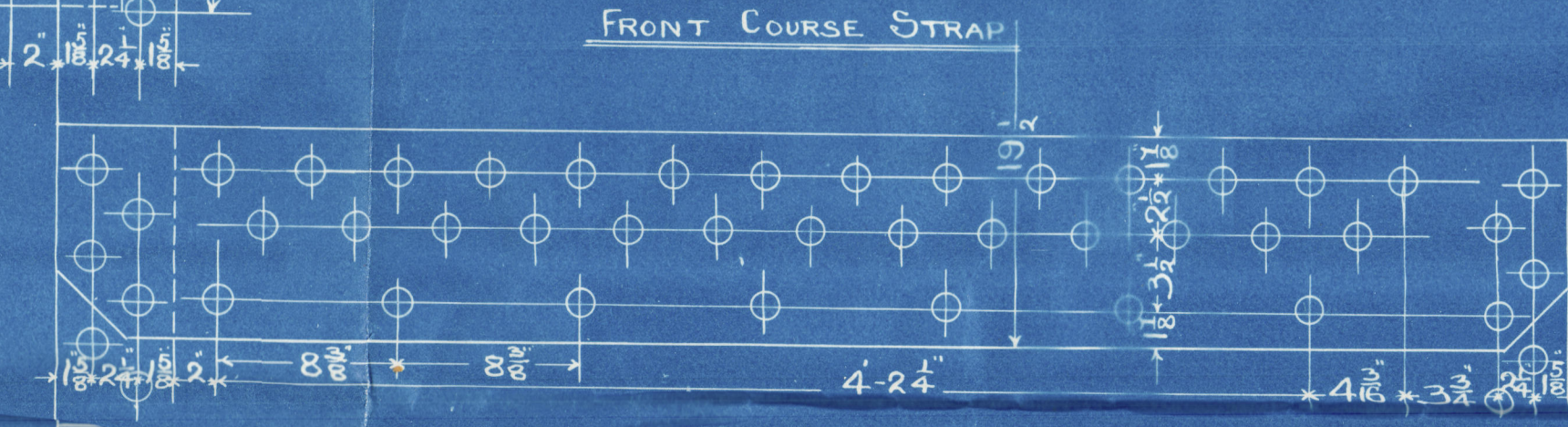


BACK COURSE STRAP
 PLATE 1 1/2" THICK RIVETS 1 1/8" DIA.
 STRAPS 1 1/2" & 1 3/4" THK.
 ALL RIVET HOLES IN SHELL DRILLED IN PLACE.
 NO SCREW STAYS TO PASS THRO OUTER ROW OF RIVETS.



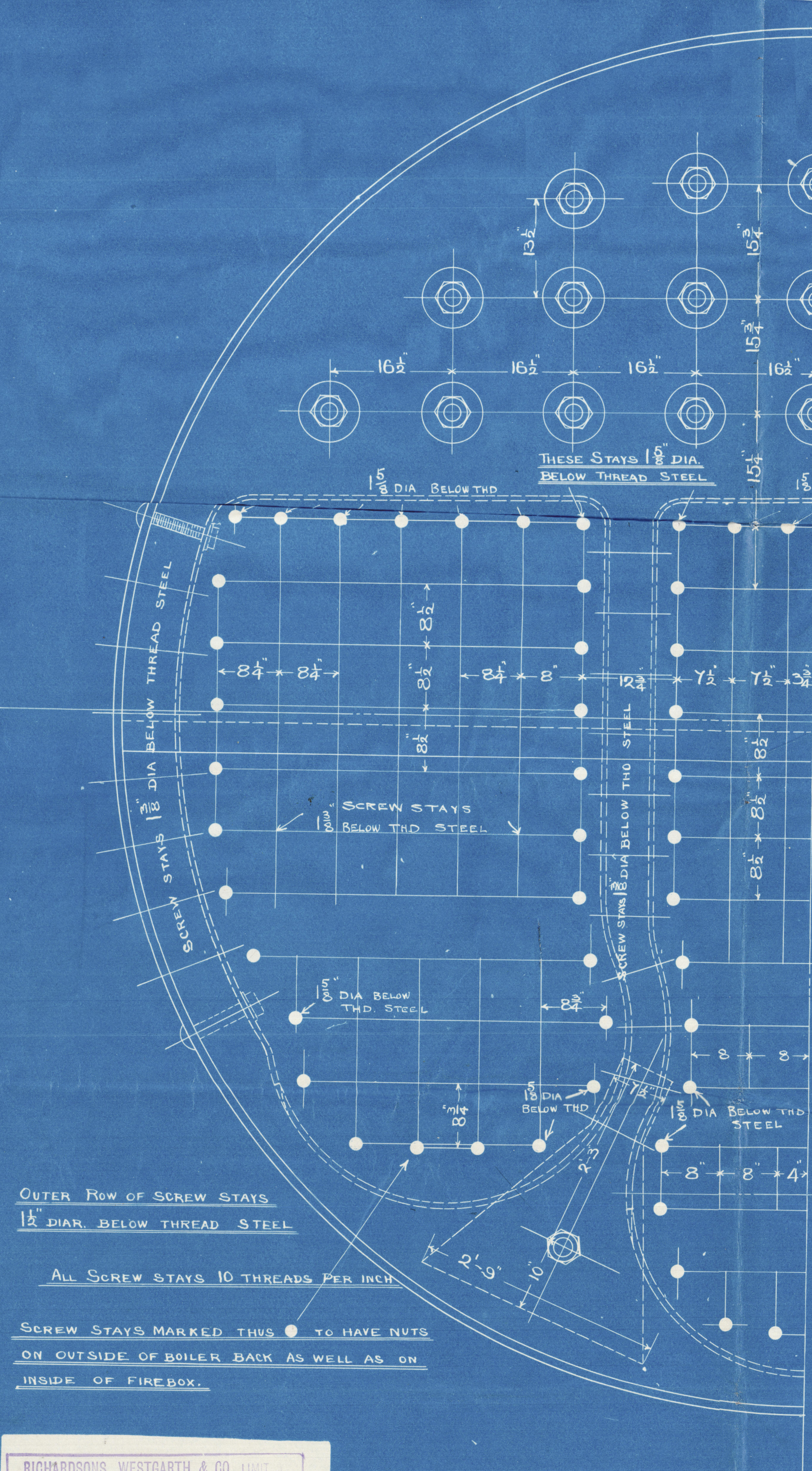
MANHOLE 13" X 16 1/2"
 PLATE 1 1/2" THICK RIVETS 1 1/8" DIA

BOILERS N° 1141-2

Mr. Irvine Shipbuilding Co. S.S. N° 128-9.

Tensile of shell 28 tons.

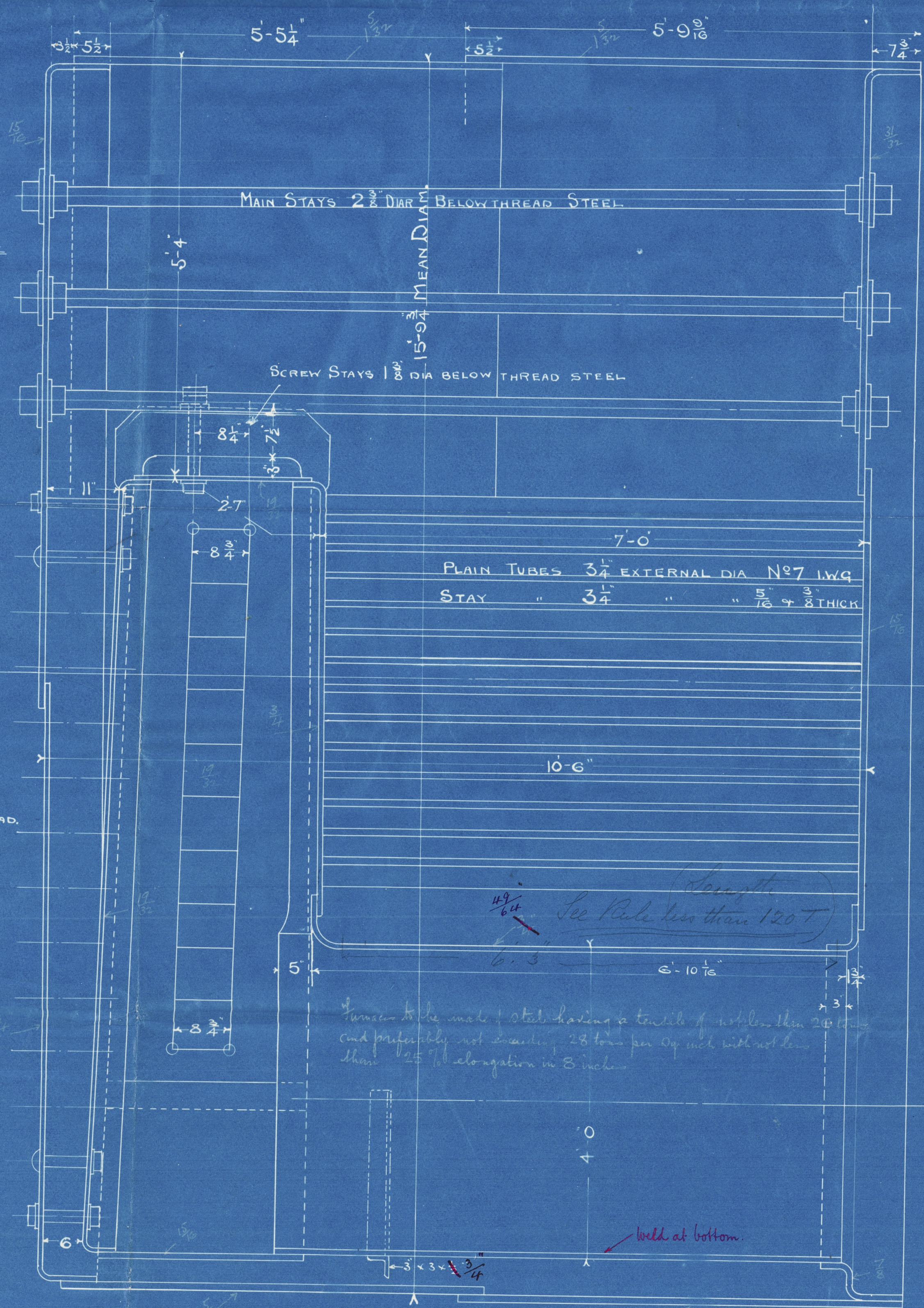
Working pressure 160 lbs. per square inch



OUTER ROW OF SCREW STAYS
 1 1/2" DIA. BELOW THREAD STEEL

ALL SCREW STAYS 10 THREADS PER INCH
 SCREW STAYS MARKED THUS ● TO HAVE NUTS
 ON OUTSIDE OF BOILER BACK AS WELL AS ON
 INSIDE OF FIREBOX.

NUTS AS SHOWN
 STAY TUBES SCREWED INTO
 BOTH PLATES IN ONE CONTINUOUS
 THREAD
 TUBES MARKED THUS ⊗
 ARE 3/8" THICK



PLAIN TUBES 3 1/4" EXTERNAL DIA N° 7 1W9
 STAY " 3 1/4" " " 5/16" & 3/8" THICK
 10'-6"
 6'-3"
 6'-10 1/2"
 4'-0"
 3'-3 3/4"
 16" X 12"
 11/9/02
 See Plate 1141-2 T
 28 tons per sq inch with no loss
 elongation in 8 inches
 held at bottom

RICHARDSONS, WESTGARTH & CO. LTD.	
DRAWING OFFICE, HARTLEPOOL.	
NO. OF DRAWING	5 1141-2
NO. OF TRADING	15328
WHERE SENT	Lloyds
EXAMINED BY	Lloyds
DATE	29th Aug 1902

Main Boilers

Irving S.B. & Co. Ld.

No. 128 & 129 Vessel

Richardson Westgarth
(Hull & Co.)

No. 1141 & 1142

160 lbs

128
No. 2885
Hoyds Test
320 lbs.
W.J.S. 23-12-02

129
No. 2887
Hoyds Test
320 lbs.
W.J.S. 15-1-03

No. 128 "Sirius" now "Dunrobin Bay"

No. 129 "Prochivist"

Appl Reports

Nos. 120640 12085

WJ575-0184