

# LLOYDS NUMERALS

LENGTH PER RULE	229.21
1/2 BEAM MLD.	17.91
DEPTH OF HOLD & FLOORS	17.87
HALF GIRTH	32.20
FRAME NUMBER	67.98
PLATING	15581
EQUIPMENT NUMBER	16961
DEPTHS IN LENGTH	12 X 1
BREADTH IN LENGTH	6.4
CLASS	100.11 QUARTER DECK

## MIDSHIP SECTION

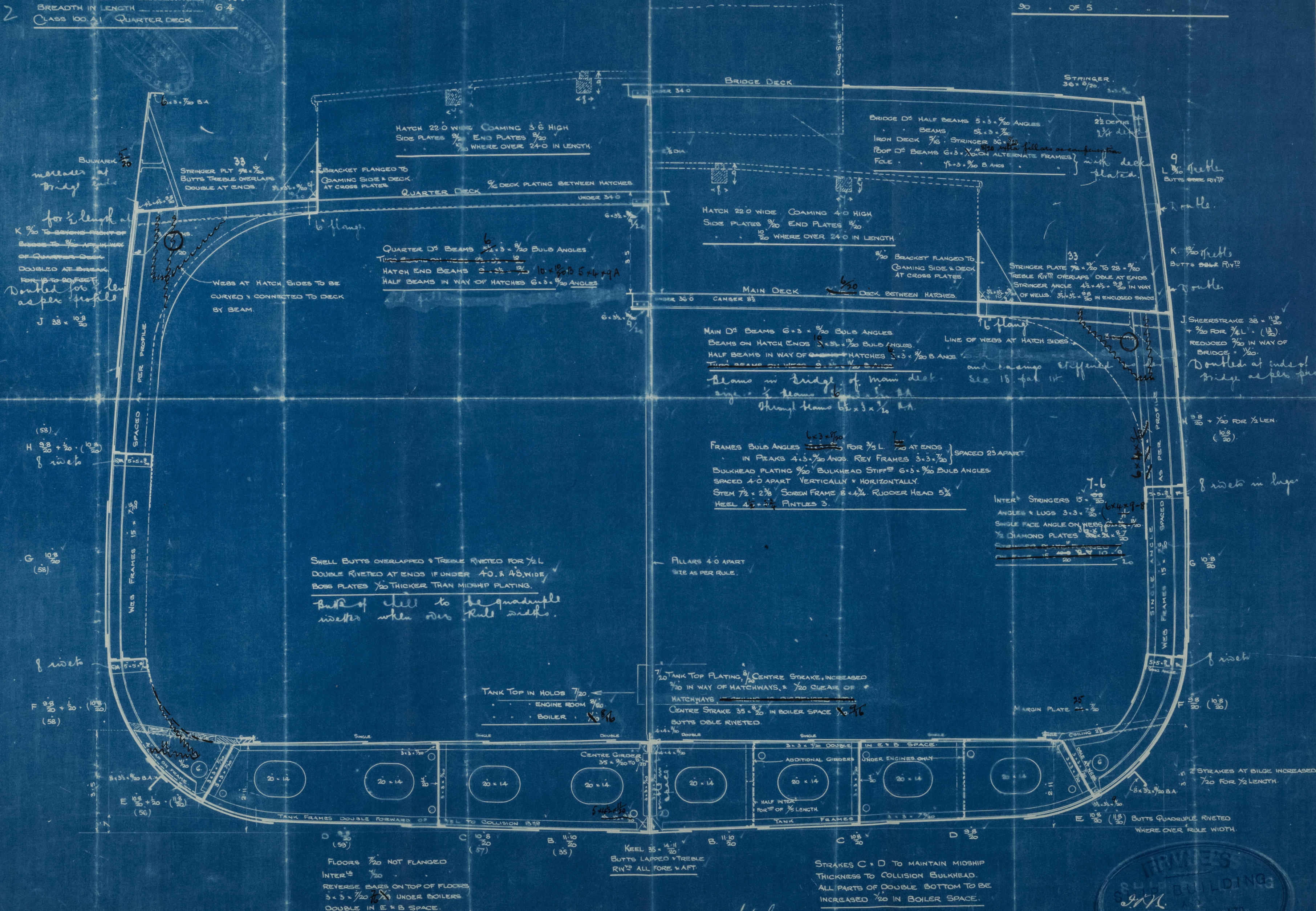
### STEEL SCREW STEAMER.

230' 6" x 36' 0" x 17' 2" (MAIN DS).

SCALE 1/2" = ONE FOOT

#### EQUIPMENT

2 BOWER ANCHORS STOCKLESS	23 1/2 CWTs
1 STREAM	25 1/2
1 KEDGE	8 (EX STOCK)
240 FATHOMS 1 1/2" STUD CHAIN CABLE	4
75 3/4" STEEL WIRE STREAM	
90 3/4" TOWLINE	
90 OF 6 HAWSER & WARPS	
90 OF 5	



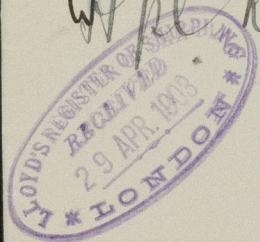
W125-0182



"Sirius"  
Irvine's S.B. & S. Decs  
No. 128 88

Midship Section

W/ple Report No. 12064



RETAIN



© 2021

Lloyd's Register  
Foundation

W1525-0182