

ALL PLATES RIVETS AND STAYS OF STEEL
TUBES - LAP-WELDED IRON.

RIVET HOLES $15\frac{1}{16}$ DIA

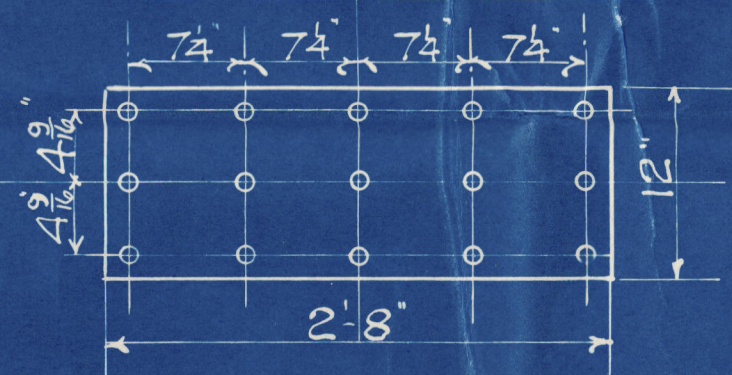
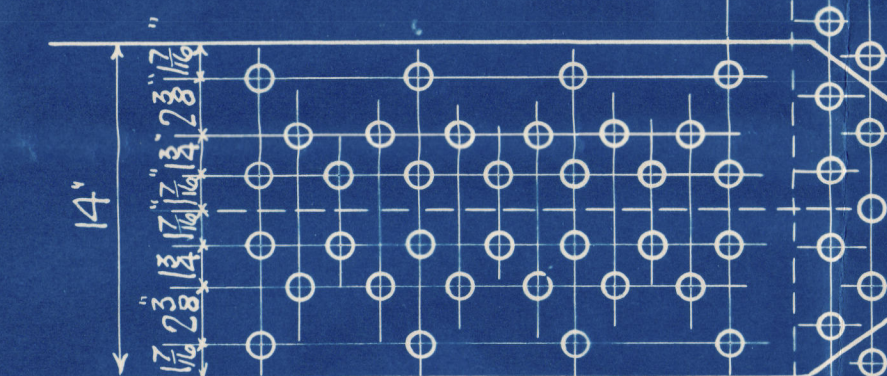


Diagram illustrating the layout of rivets in a lap joint. The diagram shows two overlapping plates with rivets arranged in a staggered pattern. Key dimensions and labels include:

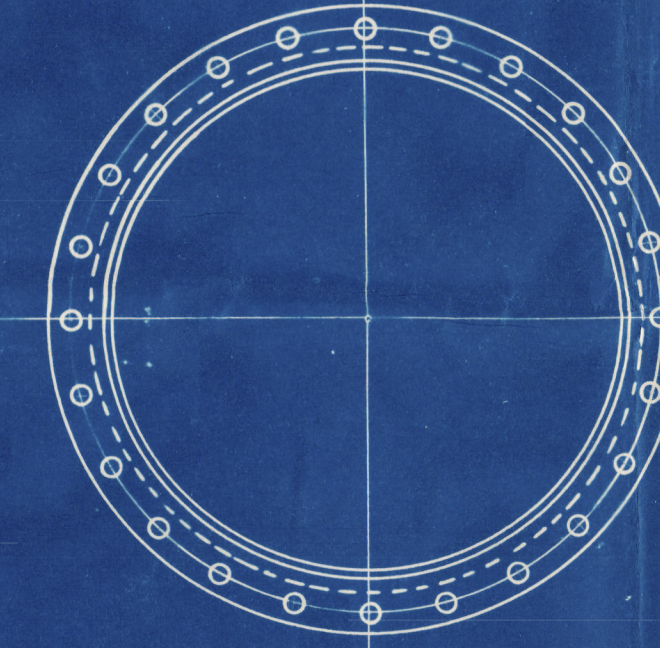
- 8 3/4"**: Dimension across the top of the rivet pattern.
- 9 1/2"**: Dimension from the edge to the first row of rivets on both sides.
- 12"**: Dimension between the two rows of rivets.
- 32 RIVETS**: Total number of rivets.
- 1 1/2" HOLES**: Diameter of the rivet holes.

15/16" HOLES 17 PITCHES 6 5/8"

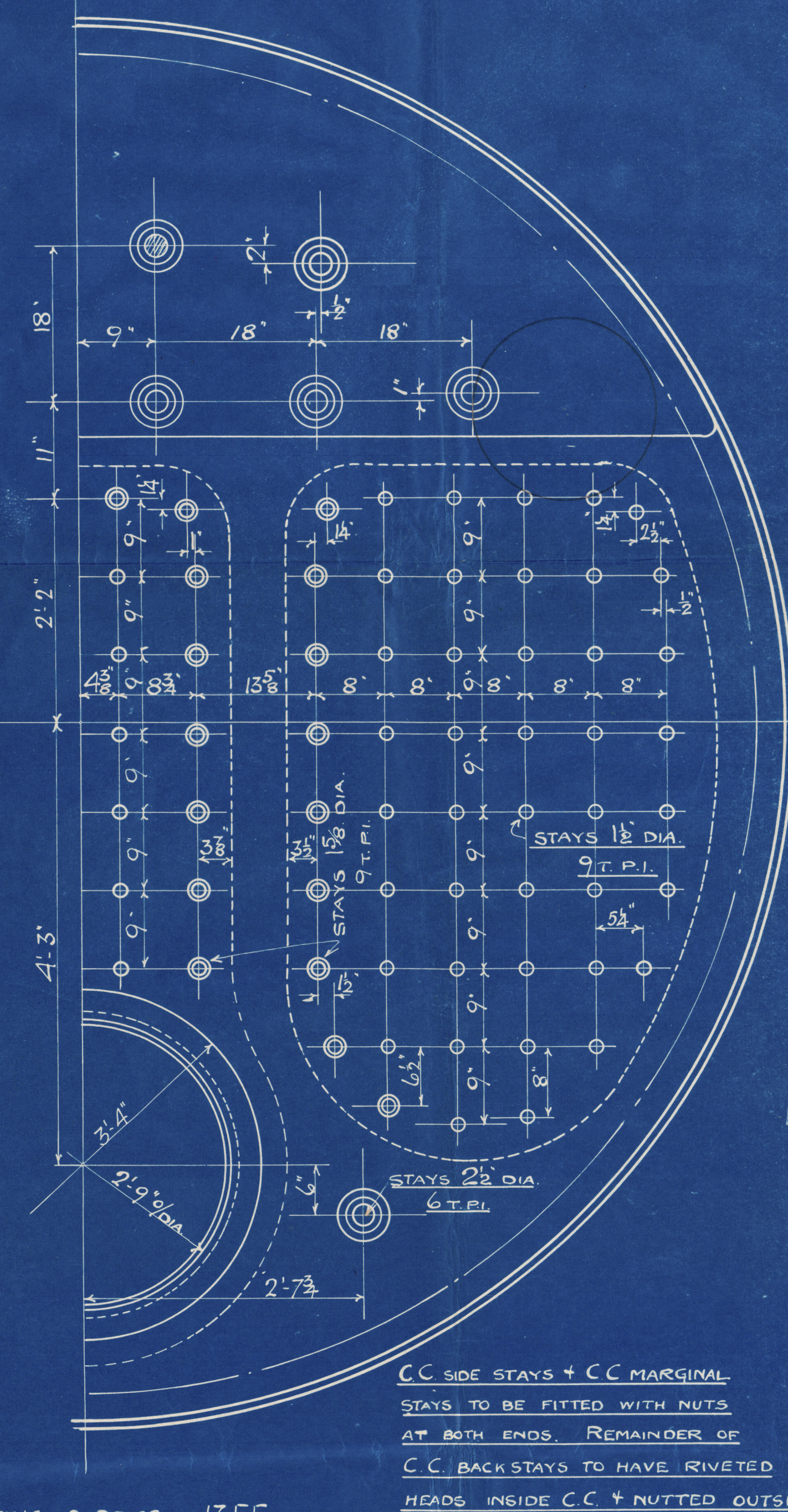
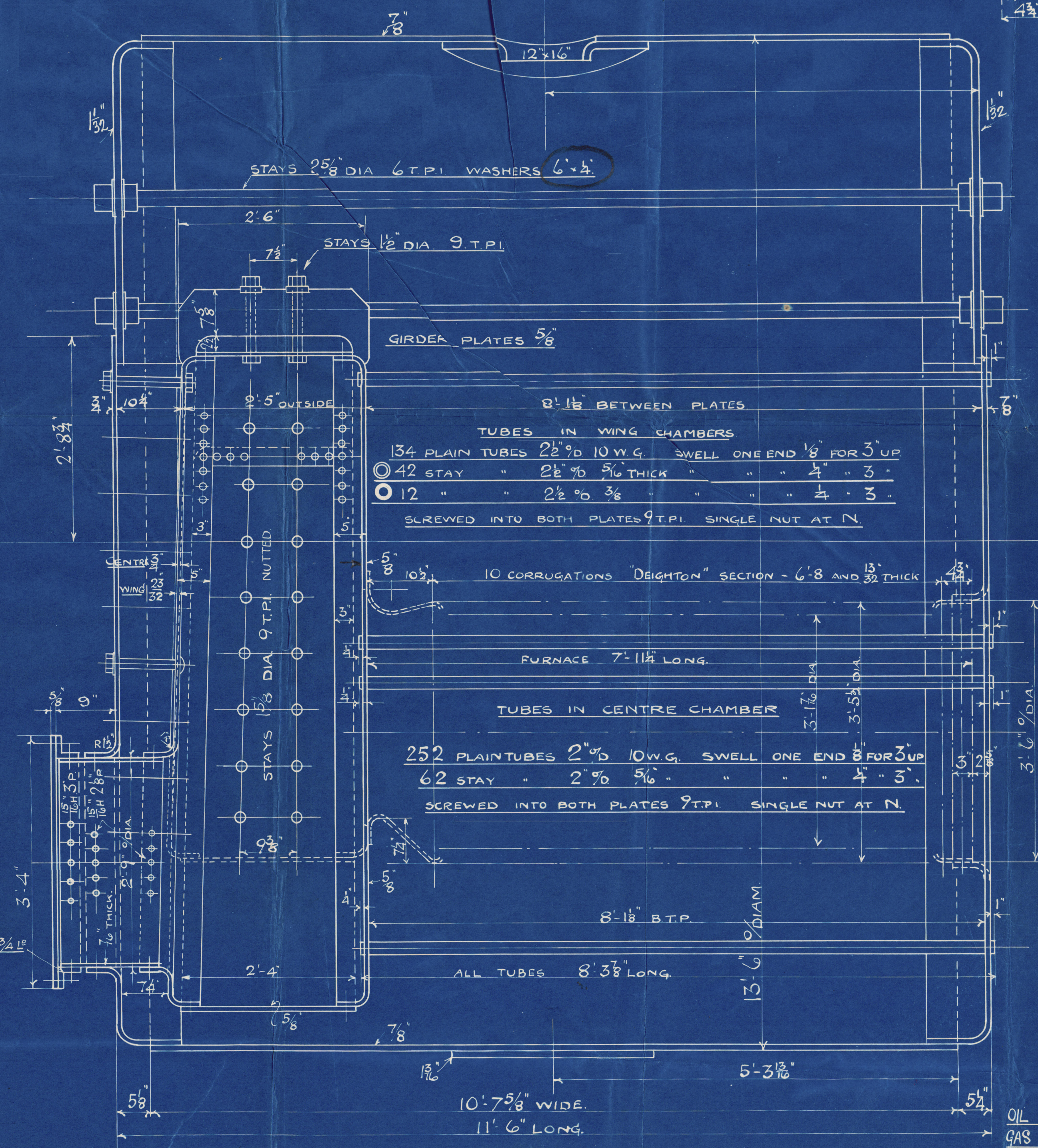


INSIDE STRAP	25/32"
OUTSIDE "	21/32"
PLATE %	85.84
RIVET %	85.55

CIRCUM. SEAMS 1" HOLES 3/4" PITCH.
PLATE % 69.18 RIVET 42.41



DRILLING IN ANGLE OF ACCESS DOOR
24 BOLTS $\frac{3}{4}$ " DIA. ON 3'-1" DIA. P.C.
ASBESTOS JOINT RING $\frac{3}{16}$ " THICK.



CC SIDE STAYS + CC MARGINAL
STAYS TO BE FITTED WITH NUTS
AT BOTH ENDS. REMAINDER OF
CC BACK STAYS TO HAVE RIVETED
HEADS INSIDE C.C. + NUTTED OUTSIDE.

OIL HEATING SURFACE	1355	sq. ft.
GAS " "	1330	sq. ft.

STEEL BOILER 13'-6" O/DIA. x 11'-6" LONG. 150 LBS.W.P. LLOYDS.

6294; 6; 8.

DRG. NO. 584.

W152-0141



© 2019

Lloyd's Register
Foundation

Stockton Chemical Engineers & Riley

Boilers etc.

Boilers Nos. 6294-6-8.

W. Daxford's Contract No 208-9-644

British Insurance
SUNDERLAND RPT. NO. 32605

WIS2-0144

Stockton Chemical Engineers
& Riley Boilers Ltd.,
Stockton-on-Tees.