

Material: Siemens Mosekin-Stahl.

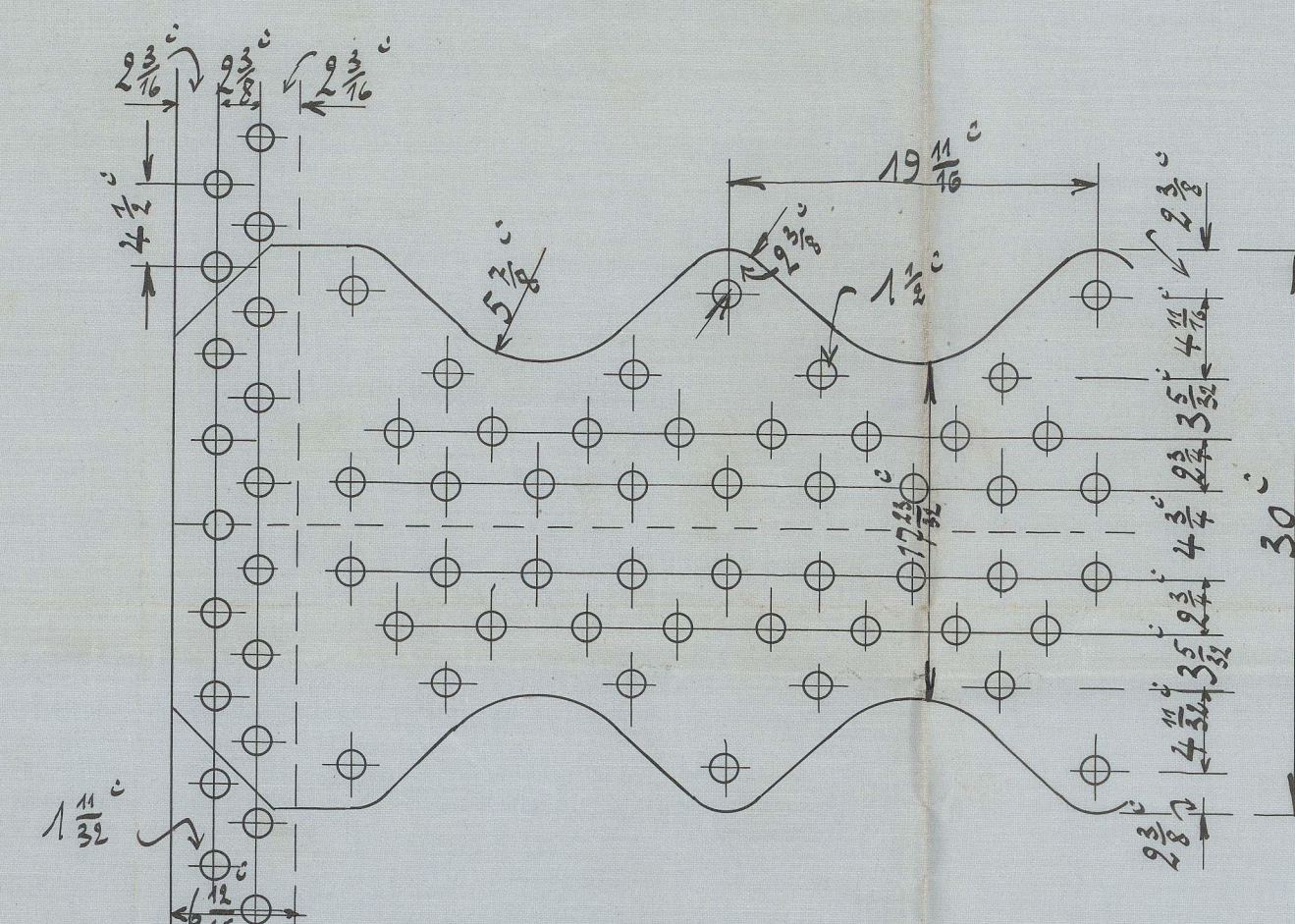
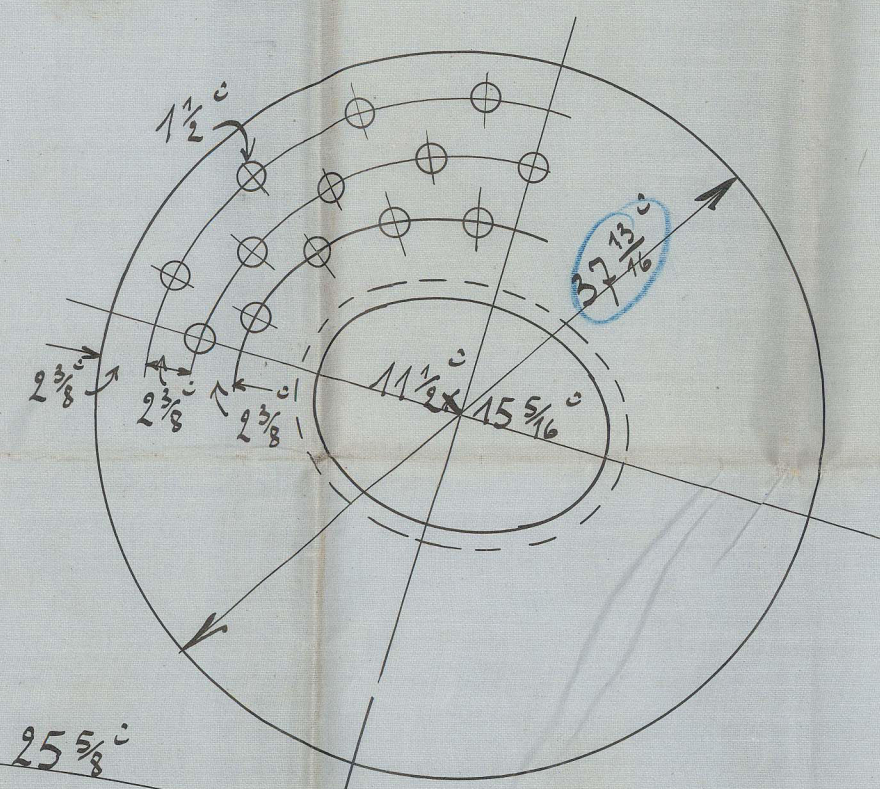
Shell plating and girders tensile strength of 27,9 - 32,4 tons

Elongation 22,5%

Elongation 26%

All stay bolts with nuts and washers; material: Siemens Martin-Steel
Tensile strength 25.4-28.6 tons per sq. inch.

Thickness of shell plate $T = \frac{206.18 \times 2}{22.924} + 1 = 18.5 + 1 = \frac{20.5}{16} = 1\frac{9}{32}$

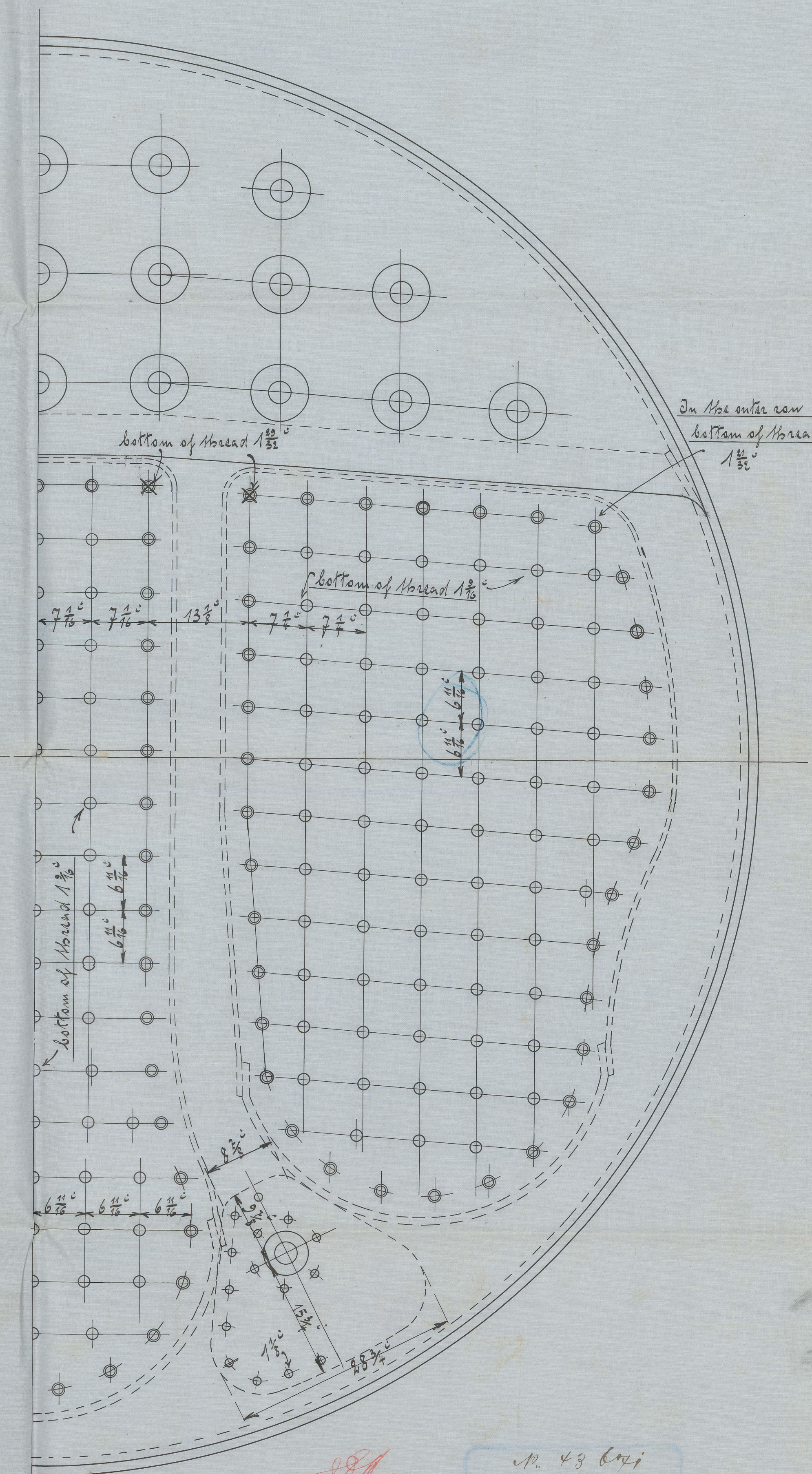
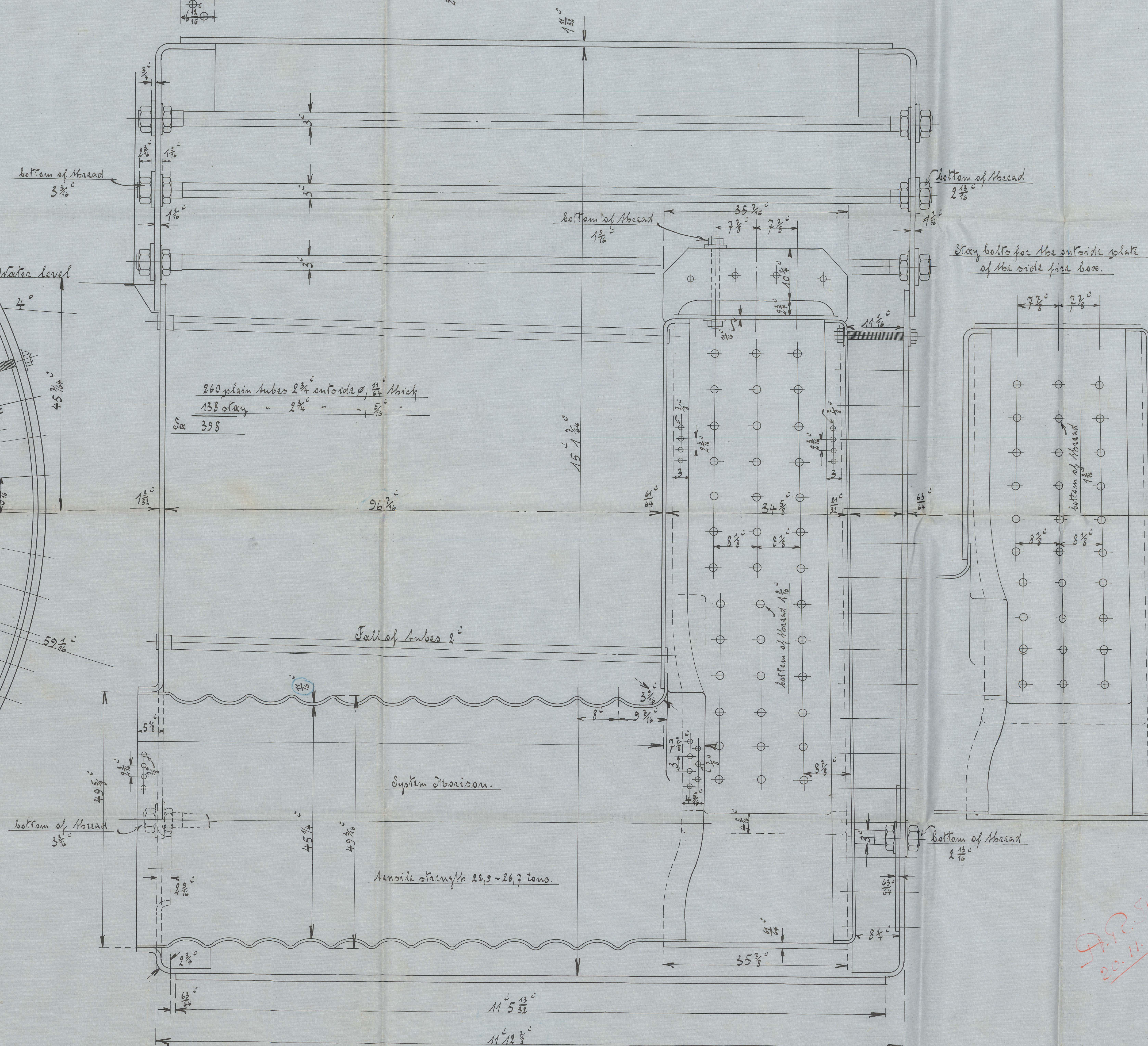
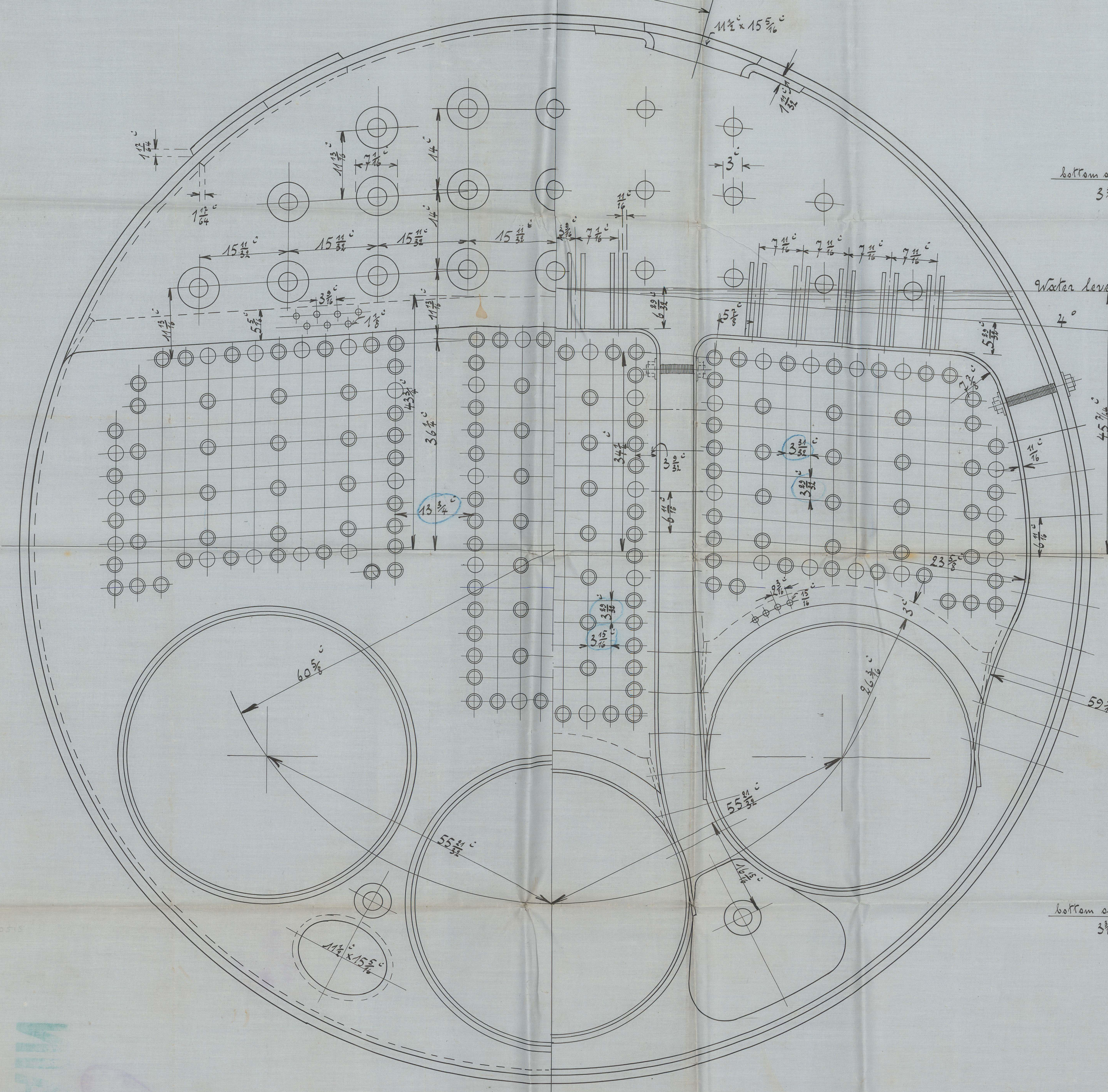


to be closed 100 A. Steel.

Nb: 397-98-99.-60.

20/11/11

1:10.



Ms. 43.644

15777. 77.

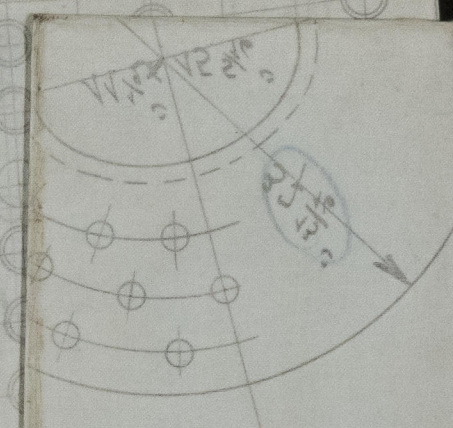
622
Messrs. J. & T. Teaklenberry & Co.

SS No 251.

Freight No 292, 98, 99, 60.

PAID

PAID



WISIS-0212



© 2021

Lloyd's Register
Foundation