

- NORTHUMBERLAND ENGINE WORKS -

- TRACING 379 -

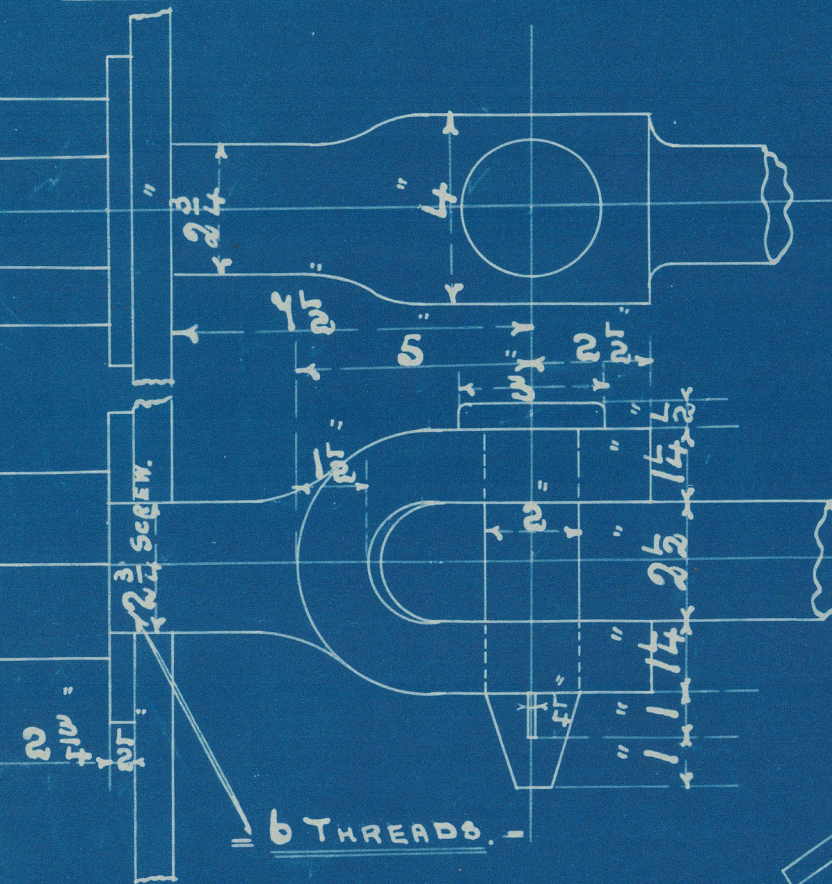
- SCHEDULE L -

= STEAM BOILER =

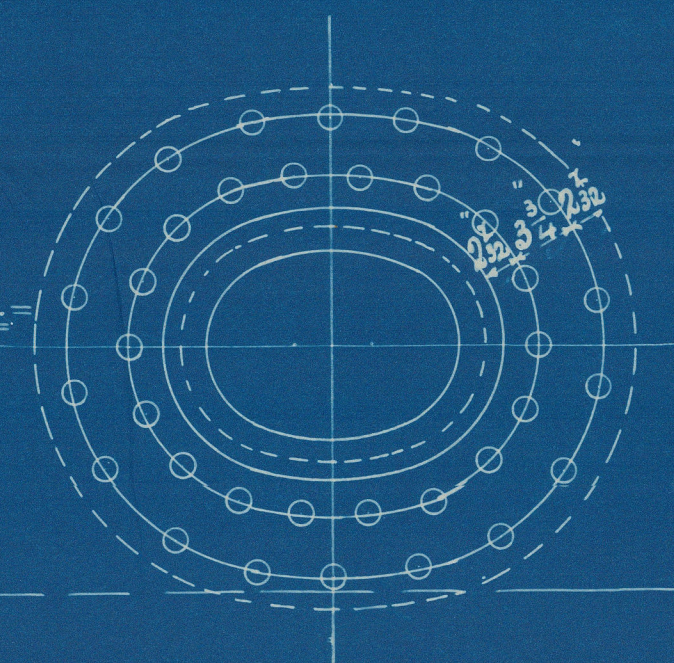
= SCALE 1 INCH = ONE FOOT =

IRON STAYS THUS =
NOT TO BE WELDED =

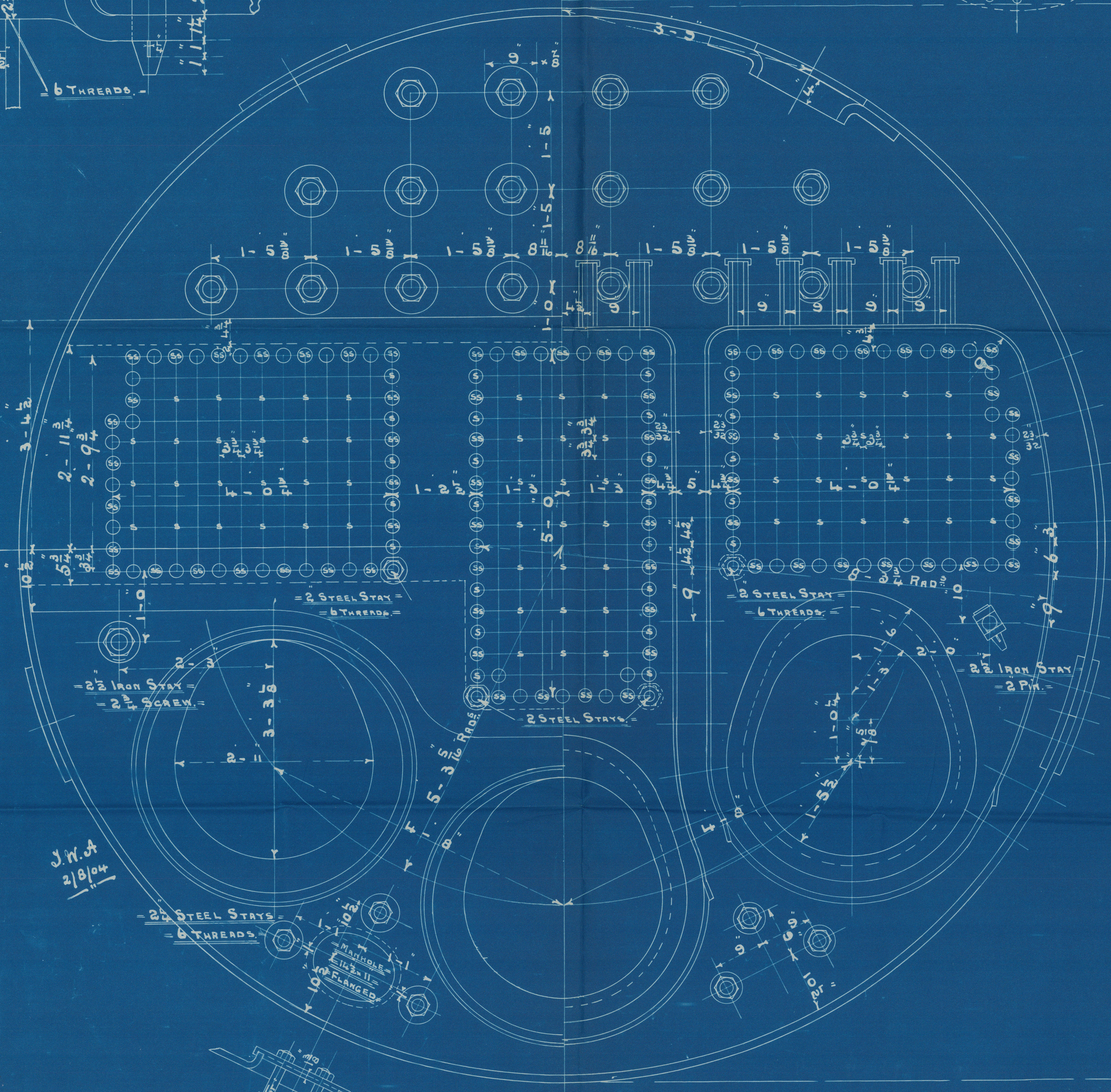
J.W.A.
10/19/04



1 1/2 RIVET HOLES =
INSIDE ROW & PITCH =

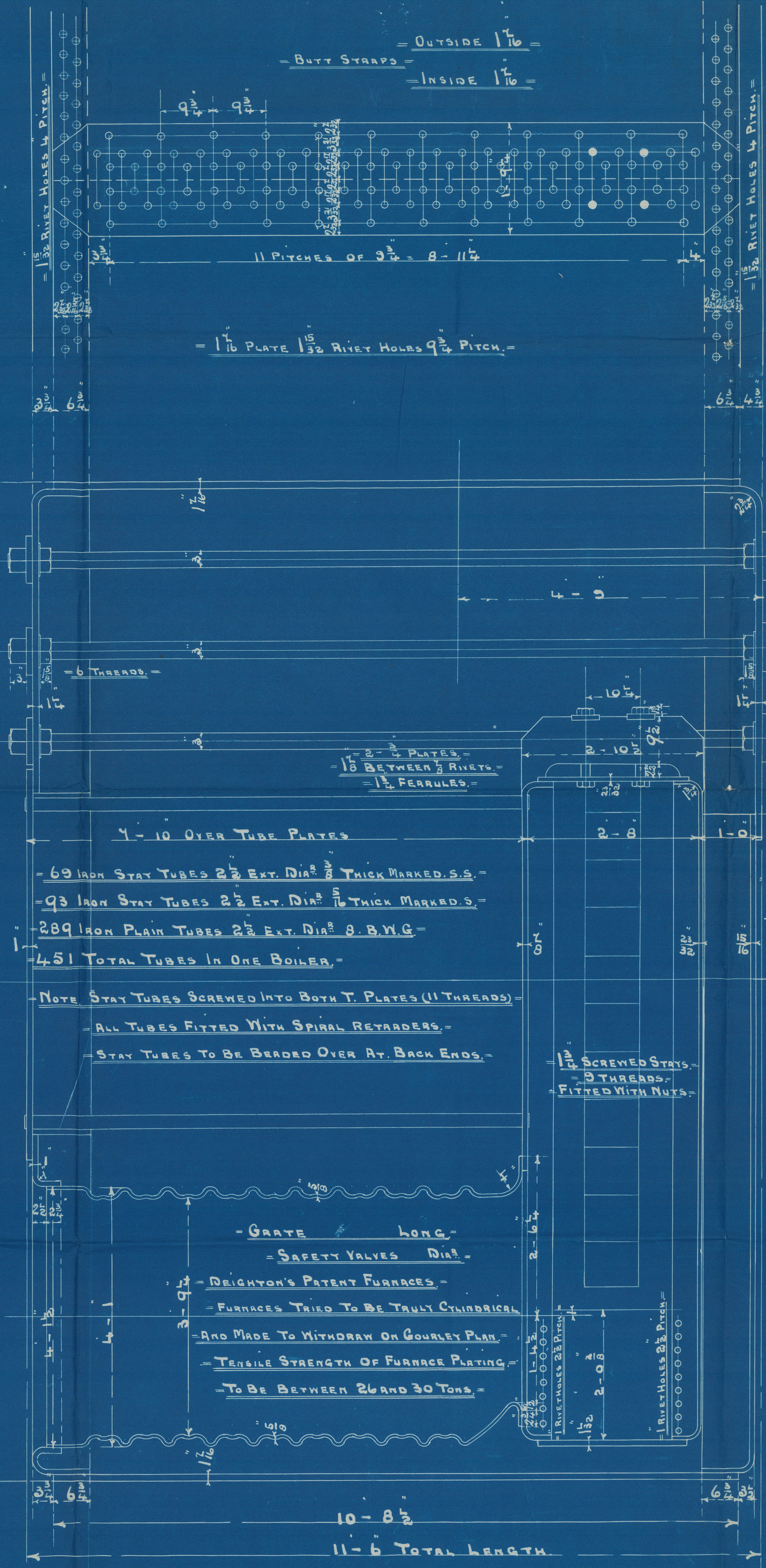


MANHOLE IN SHELL 16 x 12 =
MANHOLE RING 3-1 1/4 x 2-9/16 x 1 1/16 =



J.W.A.
2/18/04

15-5 EXT. DIA.



OUTSIDE 1 1/16 =
BUTT STRAPS =
INSIDE 1 1/16 =

1 1/16 PLATE 1 1/2 RIVET HOLES 9/16 PITCH =

2-1/2 PLATES =
18 BETWEEN 3 RIVETS =
1 1/2 FERRULES =

4-10 OVER TUBE PLATES

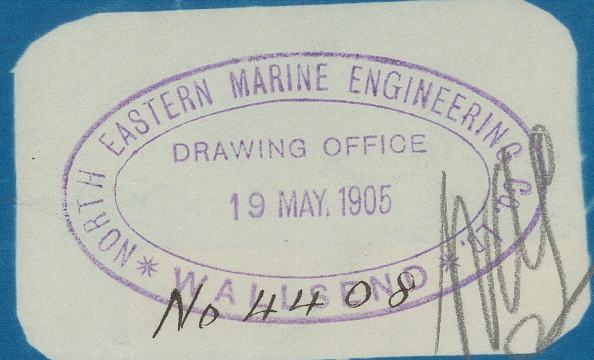
69 IRON STAY TUBES 2 1/2 EXT. DIA. 3/8 THICK MARKED S.S. =
93 IRON STAY TUBES 2 1/2 EXT. DIA. 3/8 THICK MARKED S.S. =
289 IRON PLAIN TUBES 2 1/2 EXT. DIA. 8 B.W.G. =
451 TOTAL TUBES IN ONE BOILER =

NOTE STAY TUBES SCREWED INTO BOTH T. PLATES (11 THREADS) =
ALL TUBES FITTED WITH SPIRAL RETARDERS =
STAY TUBES TO BE BEADED OVER AT BACK ENDS =

GATE LONG =
SAFETY VALVES DIA. =

DEIGHTON'S PATENT FURNACES =
FURNACES TO BE TAULT CYLINDRICAL
AND MADE TO WITHDRAW ON GOURLEY PLAN =
TENSILE STRENGTH OF FURNACE PLATING =
TO BE BETWEEN 26 AND 30 TONS =

10-8 1/2
11-6 TOTAL LENGTH



WORKING PRESSURE 180 LBS. =

TEST PRESSURE 360 =

NOTE ALL PLATES STAYS &c TO BE OF STEEL EXCEPT =

WHERE OTHERWISE SHOWN =

TENSILE STRENGTH OF SHELL PLATES AND BUTT STRAPS TO BE =

NOT LESS THAN 20 TONS PER SQUARE INCH =

ALL HOLES DRILLED IN PLACE AFTER PLATES ARE BENT =

STAYS MARKED THUS 0 1/2 DIA. (3 THREADS) =
ALL OTHERS 1 1/2 DIA. (3 THREADS) =

NOTE ALL STAYS SCREWED AND FITTED WITH NUTS =

2 THUS =
2 OPPOSITE HAND =

FOR POSITION OF MANHOLES SEE SKETCH =
ON AIR TRUNK DRAWING =

CONTRACT 1655

L.H.H.
24/5/05
Diploma 74.1570-100

© 2021
N. E. M. E. Co., LIMITED, WALLSEND.

ENCLOSURE

FOR

Messrs.

0015(313)

N. E. M. E. Co., LIMITED, WALLSEND.

ENCLOSURE

FOR

Messrs.

0015(213)

New castle on Tyne
Sir Raylton Dixon & Co

S-S. No 519-

N & Main C 1655

Duplicate of C 1590
(S-S. apud)

app. 23/5/08

L.H.H.

S/S. Lusitania

Newcastle Report

No 50.737

Mult report no. 4588

BOILER.

RETAIN



© 2021

Lloyd's Register
Foundation

W1514-0015