

14. 12. 06
16. 1. 07.

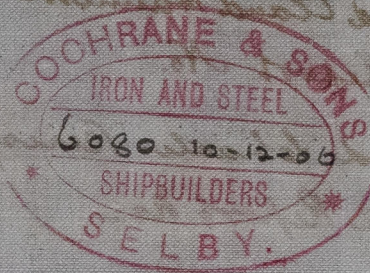
S. S. N^o 399 & 400.

MIDSHIP SECTION.

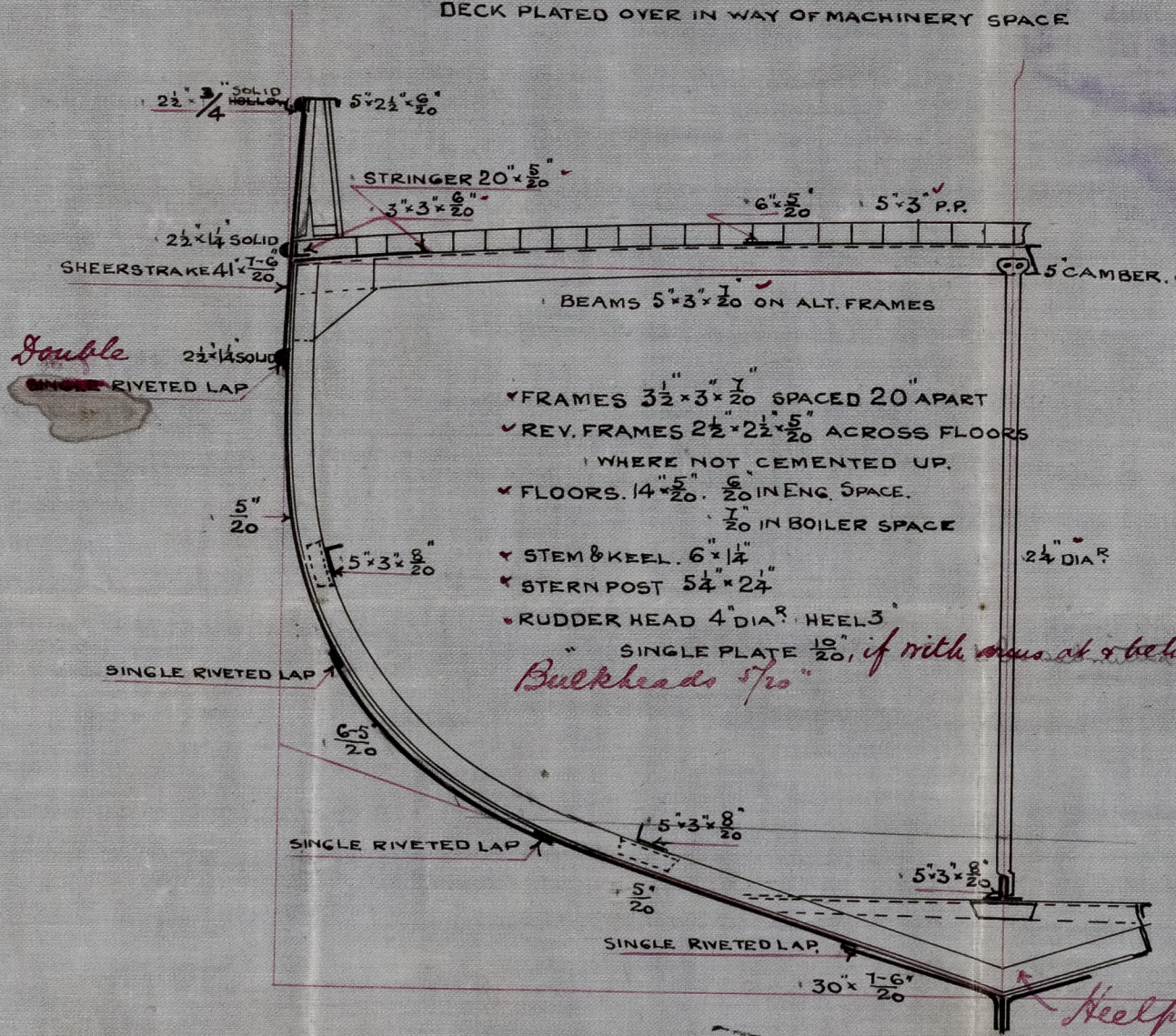
DIMENSIONS 82'0" x 18'3" x 9'0" ML^D.

SCALE $\frac{1}{2}$ " = 1 FOOT

TO CLASS 100 A1 FOR FISHING PURPOSES.



DECK PLATED OVER IN WAY OF MACHINERY SPACE



NUMERALS

$\frac{1}{2}$ B = 9.08 ✓
 $\frac{1}{2}$ G = 14.63 ✓
D = 9.37 ✓
1st N^o = 33.08 ✓
RULE LEN. 81.06 ✓
2nd N^o 2681.46 ✓

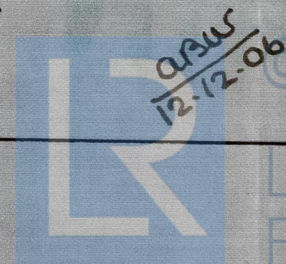
PROPORTIONS

$\frac{L}{D}$ = 8.65 ✓
 $\frac{L}{B}$ = 4.46 ✓

EQUIPMENT

✓ 2 BOWER ANCHORS 3 CWT EACH EX. STOCK
✓ 1 " " 1 3/4 " " "
✓ 60 FATHOMS 1 1/2" CHAIN CABLE
✓ 60 " 5" HAWSER
✓ 60 " 2 1/2" WARP

Heel pieces
14. 12. 06.



ARW
12.12.06

© 2021

Lloyd's Register
Foundation

1463

WIS13-0123

Midship Section

— 11 —

Cochrane & Sons

No 399 + 400

— 11 —

$\frac{1}{2}$ Lord Claud Hamilton
Hull Report No.

$\frac{1}{2}$ Lord Charles Beresford
Hull Report No. —

RECEIVED
30 JAN 1907
LLOYD'S REGISTER

NUMERALS
500 - 500
100 - 100
0 - 0
100 - 100
100 - 100
100 - 100
100 - 100

PROPORTION
 $\frac{1}{2} = 4.4\%$
 $\frac{1}{2} = 8.8\%$

EQUIPMENT

2 BOW ANCHORS 5 CWT EACH EX STOCK

7 60 FT THOMES 1 1/2" CHAIN CABLE
2 60 " 2" HAWSEY
2 60 " 2 1/2" WARP

REMAIN
12-13-06