

LONDON OFFICE:
36, VICTORIA STREET, S.W.1.

TELEPHONE: 4678 VICTORIA.

TELEGRAMS: **MMCD.**
BEARDMORE, VIC, LONDON.

SURVEYOR'S CERTIFICATE.

PARKHEAD,

D/N. C.132.

GLASGOW.

PARKHEAD WORKS.

TELEPHONES:
BRIDGETON 3100 TO 3105.
BRIDGETON 3107 (TRUNK).

TELEGRAMS:
BEARDMORE, GLASGOW.

WILLIAM BEARDMORE & CO., LIMITED.

Date **14th Dec.1927** Inv. No. **C.99.**

SOLD TO **Messrs David Rowan & Co. Ltd.,**
231, Elliot St.,
GLASGOW.

Foundry 131 Dept.

Works Rec **C.3979**

Your Order **879/10623** of **16.9.27** for **Steel Castings.**

Tests

Per **Steam lorry** & 4. Carriage

Waggon Nos.

Pkg. Mks. & Nos.

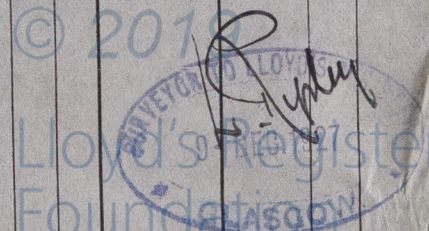
To:— **Your Works,**
Glasgow.

JOB NO. 879.

		Shop Mark.	
1	Cast Steel E .P.Cylinder Piston,	Y.18.	1 16 2 10
1	" " Starting Valve Chest,	Y.28	- - 3 -
1	" " " " Cover,	Y.29	- - - 3
1	Steam to starting valve chest,	Y.30	- - 2 15
2	" " " " Cover,	Y.31	- - - 17
<u>6.</u>			<u>1 18 - 17</u>
	Test No. 919.		

Lloyds tests.

M. Davis



(X/5) - 0033