

LONDON OFFICE:
36, VICTORIA STREET, S.W.1.

TELEPHONE: 4678 VICTORIA.

TELEGRAMS:
BEARDMORE, VIC, LONDON.

SURVEYOR'S CERTIFICATE.

PARKHEAD,

GLASGOW.

D/N. C.43.

PARKHEAD WORKS.

TELEPHONE:
BRIDGETON 3100 TO 3105.
BRIDGETON 3107 (TRUNK).

TELEGRAMS:
BEARDMORE, GLASGOW.

WILLIAM BEARDMORE & CO., LIMITED.

Date 2nd Decr., 1927 Inv. No. C.4.

SOLD TO Messrs. D. Rowan & Co., Ltd.,
231, Elliot Street,
Glasgow, C.3.

Foundry 131 Dept.

Works Ref. C.3979

Your Order 879 of 16. 9.27 for Steel Castings

Tests

Per Steam Lorry Carriage Waggon Nos.

Pkg. Mks. & Nos.

To:— Your Works,
Glasgow.

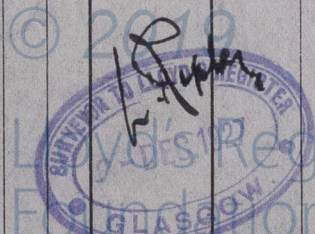
Job No. 879.

1 Cast Steel Stop Valve, Test No.821,
Shop Mark Y.25.

- 7 3 4

Lloyds Tests.

Mr. Davis



12151-0030