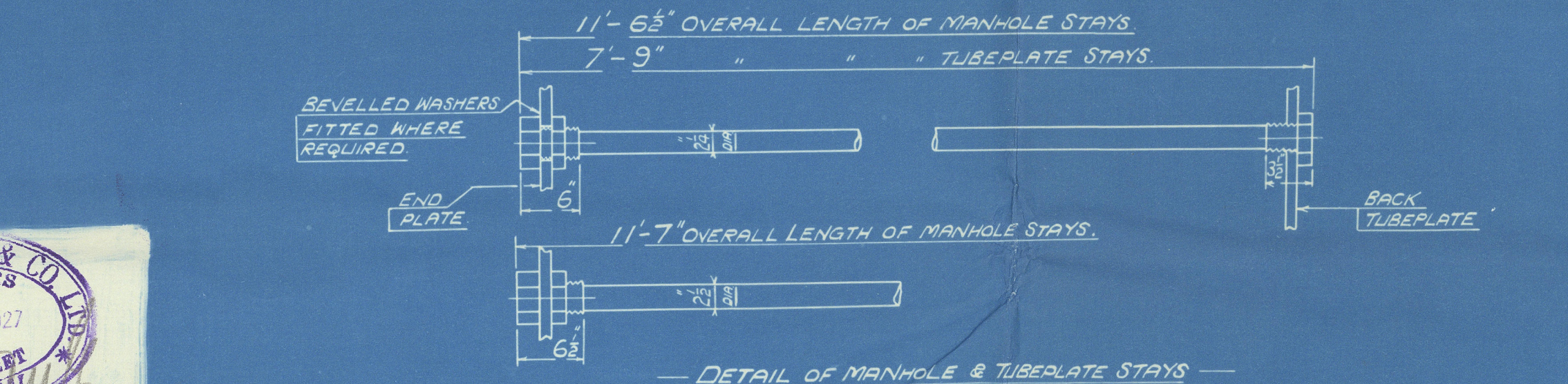
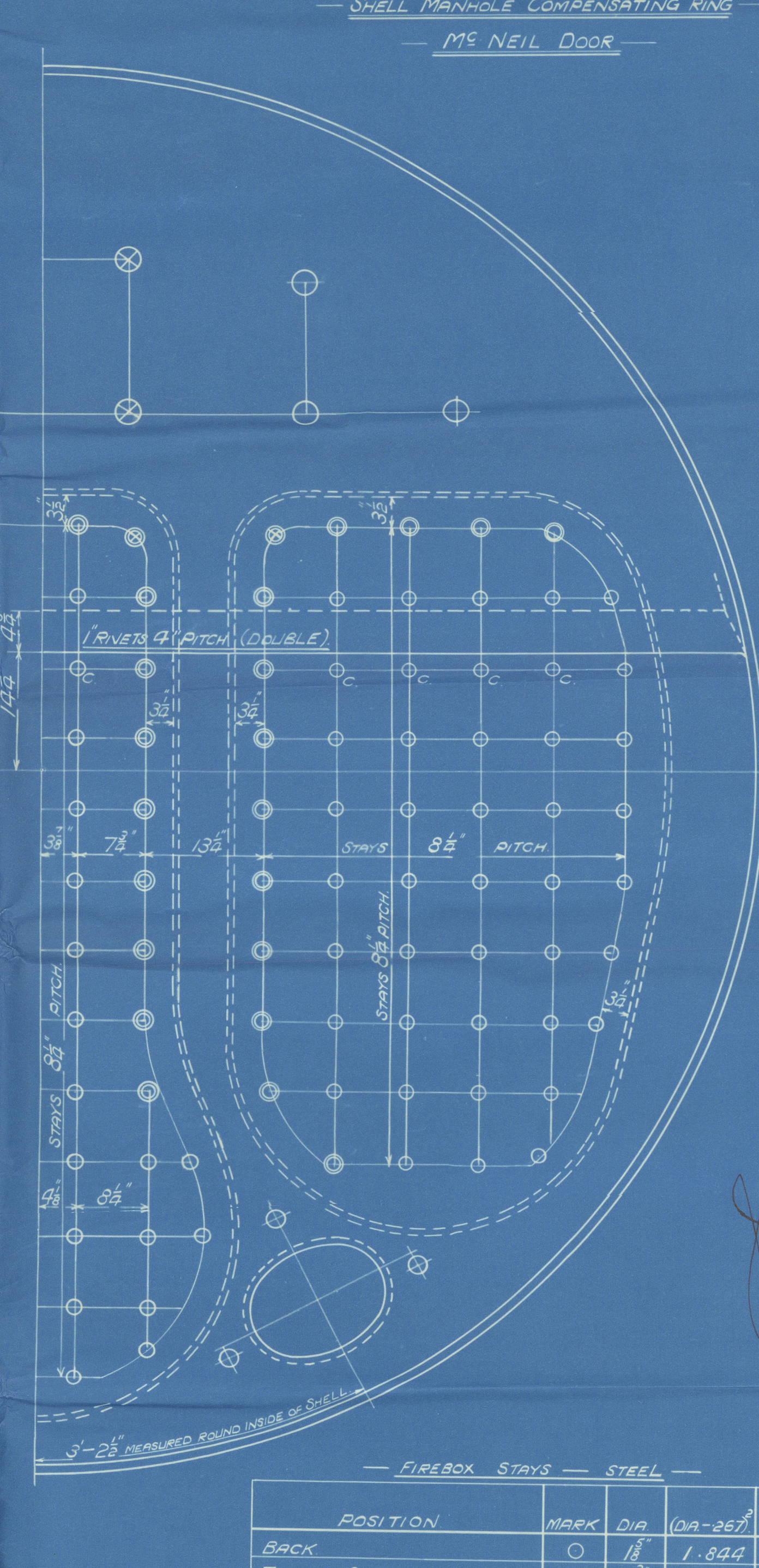
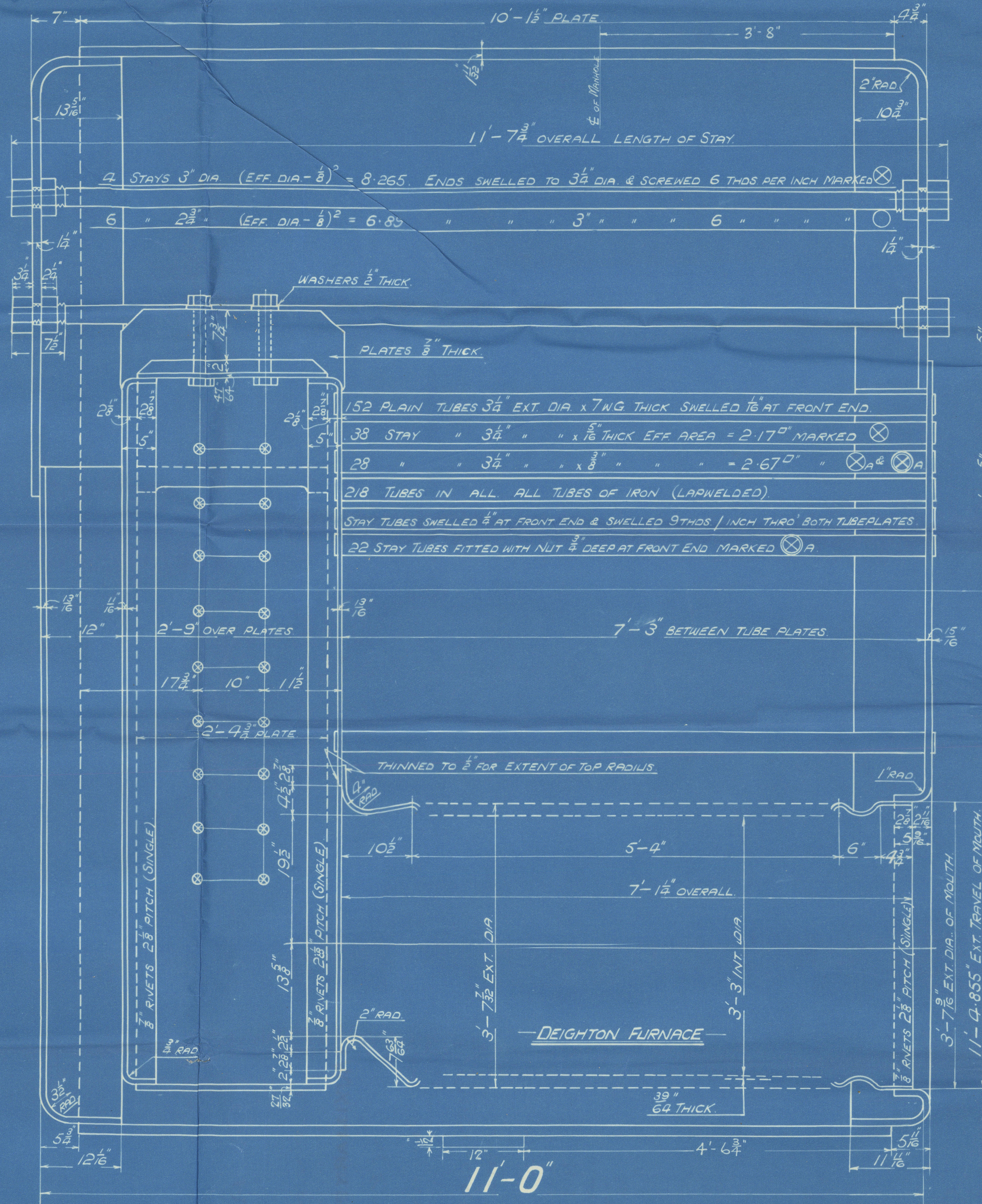
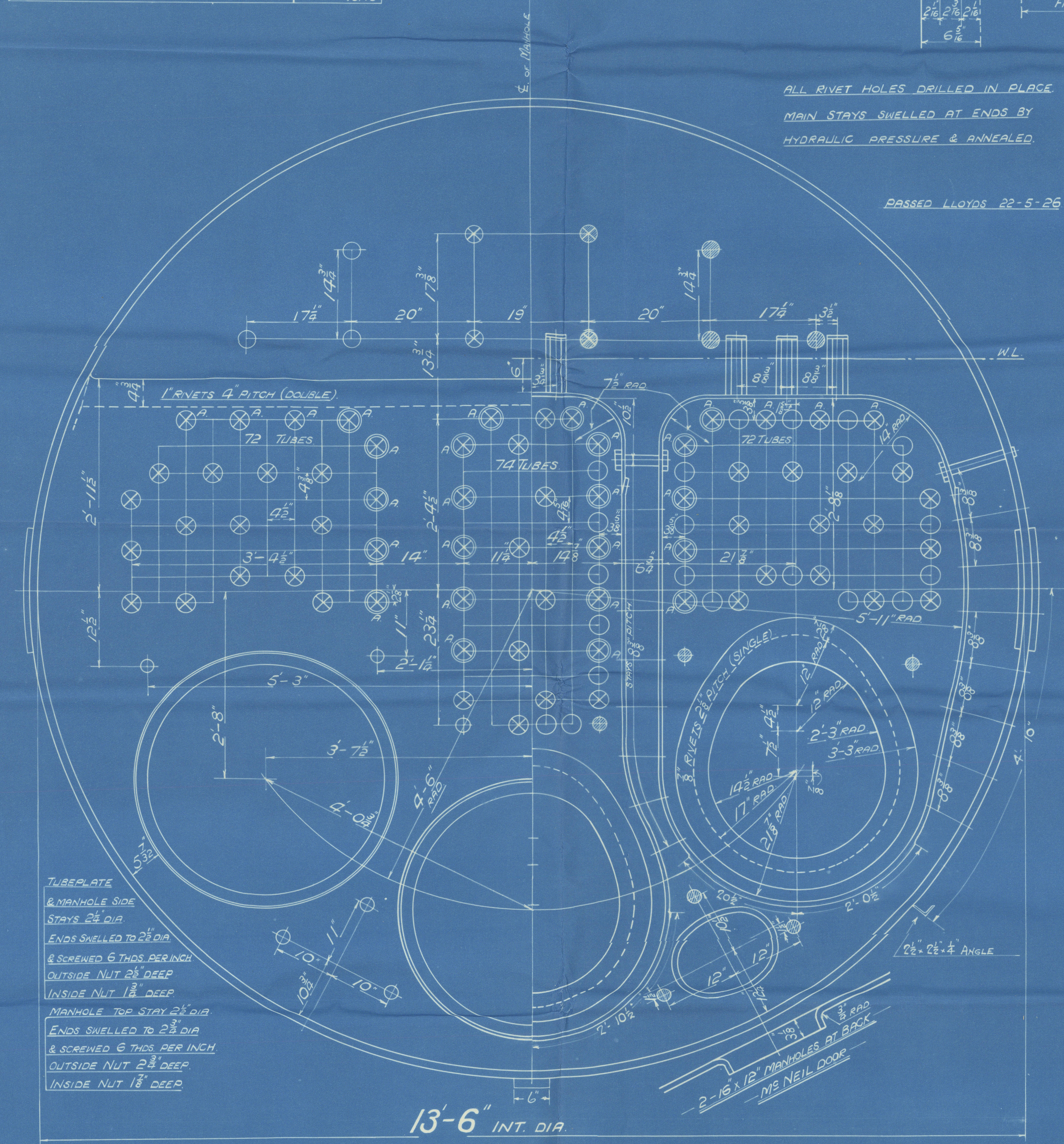
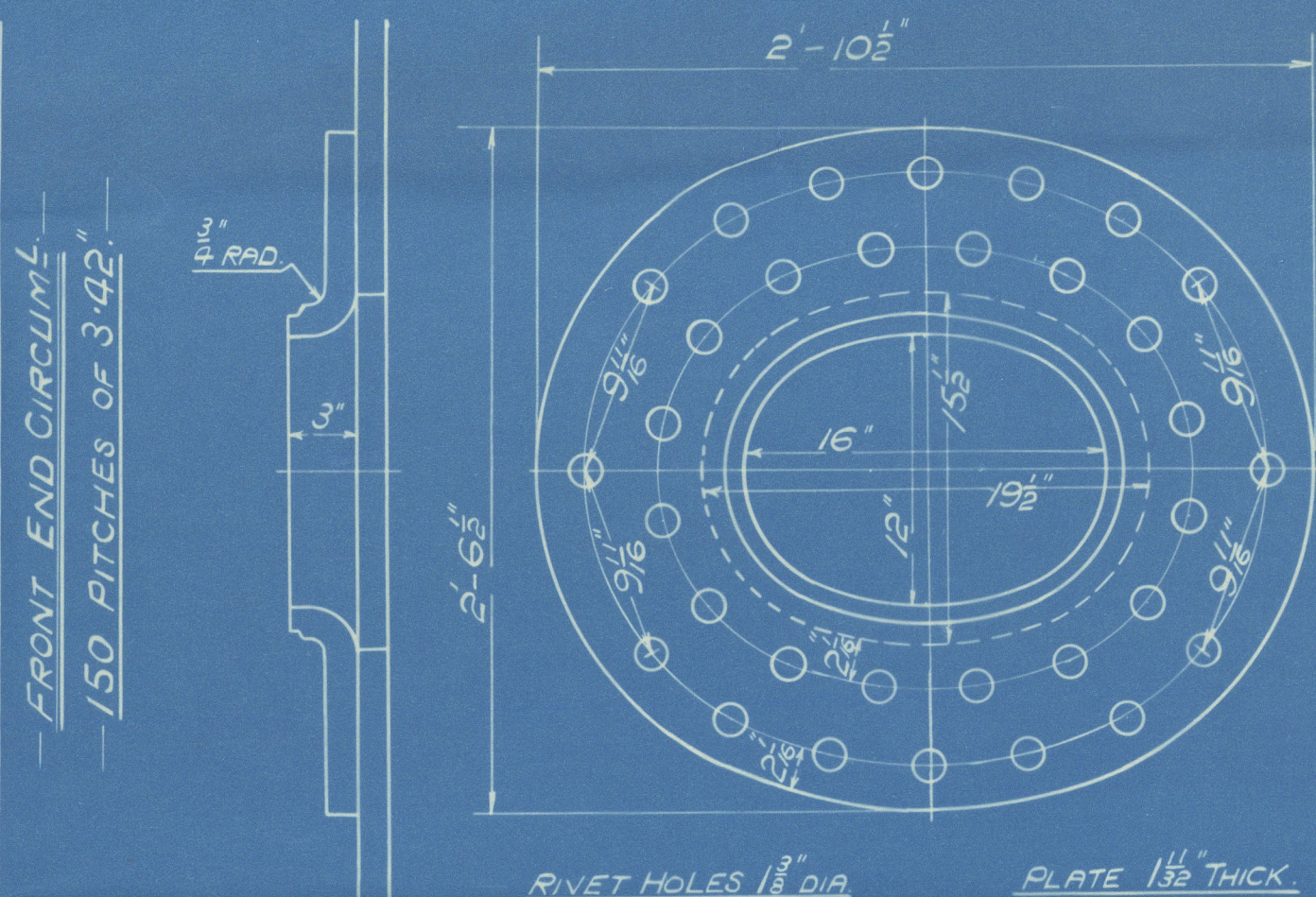
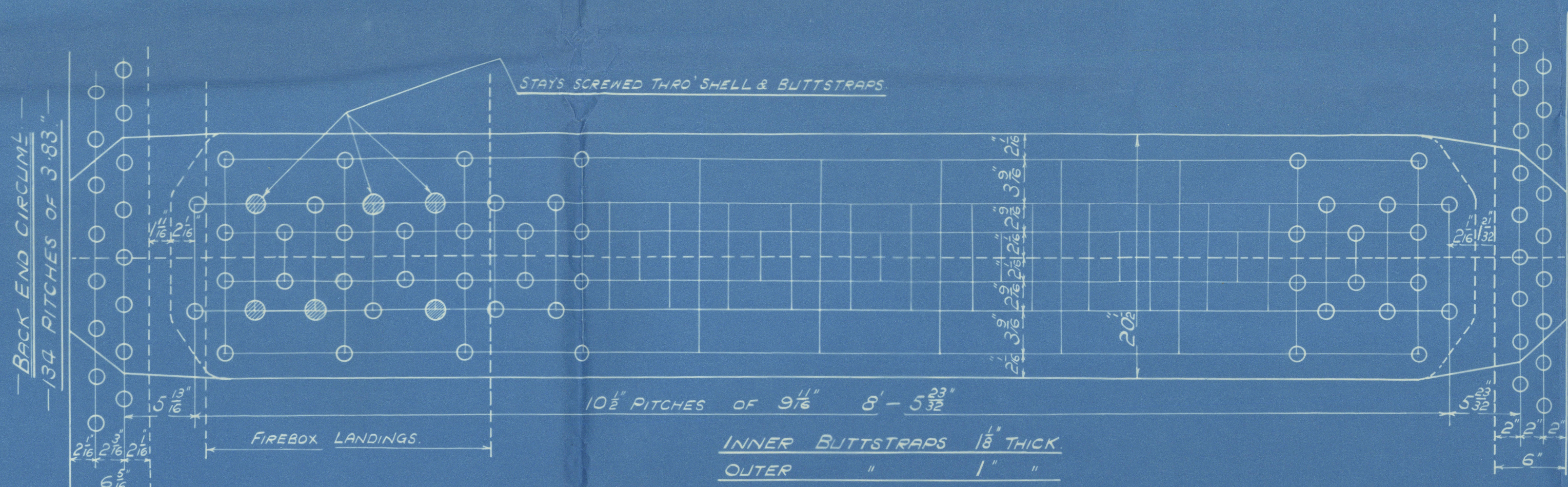


SURFACES		ONE BOILER
TUBES		134.5 #
FIREBOX TOP AND SIDES		123 "
" BACK		61 "
" TUBEPLATE		40 "
FURNACES		131 "
TOTAL HEATING SURFACE		1700 #
GRATE AREA (5-6 BARS)		53.8 "
TUBE AREA		9.37 "
WATER AREA		130 "
STEAM SPACE		330 #
GRATE AREA : HEATING SURFACE		1 : 31.7
" " : TUBE " "		1 : 25.1
" " : " AREA		572 : 1
" " : WATER " "		1 : 2.42
" " : STEAM SPACE		1 : 6.15
% BOILER ABOVE FIREBOX		29.7
WEIGHT OF WATER		20 TONS

RIVETING			
	LONG	BACK END CIRC	FRONT END CIRC
RIVET HOLE DIA	13/16"	1 1/8"	1 1/8"
PITCH	9 1/2"	7.83"	3.42"
% PLATE	85.8	64.1	61.6
% RIVET	87.4	47.5	48.4
% COMBINED	89.1		

LIMITS OF TENSILE STRENGTH & MATERIAL			
SHELL, BUTTSTRAPS AND GIRDERS	29 TO 32 TONS		
OTHER PLATES	26 " 30 "		
FURNACES	26 " 30 "		
MAIN STAYS	28 " 32 "		
SCREWED STAYS	26 " 30 "		
RIVET BARS	26 " 30 "		



**AUXILIARY BOILER**  
 ONE OFF EACH CONT.  
**CONT'S No 248-879**  
 WORKING PRESSURE 220 LBS PER SQUARE INCH  
 TEST " 380 " " " "  
 TO PASS LLOYDS SURVEY  
 SCALES, 1" & 1 1/2" = ONE FOOT

POSITION	MARK	DIA	(DIA-267)	SCREWED THRO' INCH
BACK	○	1 1/8"	1.844	9
TOP & SIDES	⊗	1 1/8"	2.199	9
BACK WIDE SPACE & TOP ROW	○	1 1/8"	2.585	9
BACK TOP CORNER	⊗	2 1/4"	3.932	9

ALL FIREBOX STAYS SCREWED THRO' BOTH PLATES AND NUT FITTED AT EACH END EXCEPT STAYS FROM WING FIREBOX TO SHELL AND STAYS MARKED "C" IN BACK BOTTOM END WHICH PROJECT 3" AND ARE CAULKED ALL 1 1/8" & 1 1/2" NUTS 3" DEEP EXCEPT ON GIRDER TOPS WHERE THE OUTSIDE NUTS ARE 1 1/2" DEEP ALL 1 1/8" NUTS 1" DEEP & 2 1/4" NUTS 1 1/2" DEEP



GLASGOW

---

D. ROWAN & CO. L<sup>d</sup>

AUXILIARY BOILER - N<sup>o</sup> 879

WP - 220 LBS

DUPLICATE OF N<sup>o</sup> 848

CHAS CONNELL & CO

S/S N<sup>o</sup> 411

---

N<sup>o</sup> 17825

LLOYD'S TEST

380 LBS

WP - 220 LBS

A.C. 143-28

*Ben Mohr*

GLASGOW REPORT N<sup>o</sup> 47940

W/51-0027



© 2019

Lloyd's Register  
Foundation