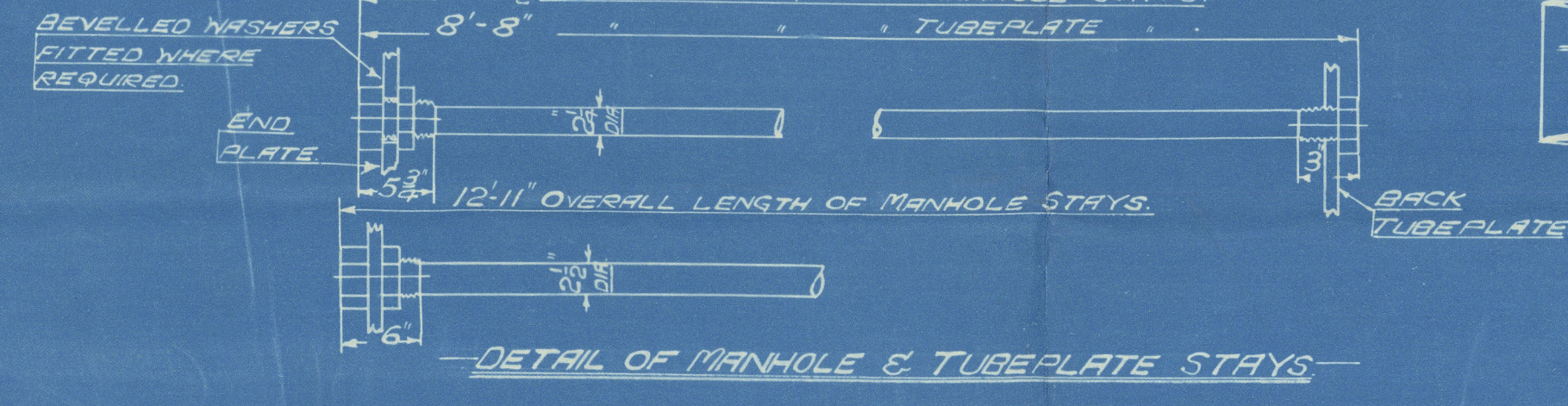
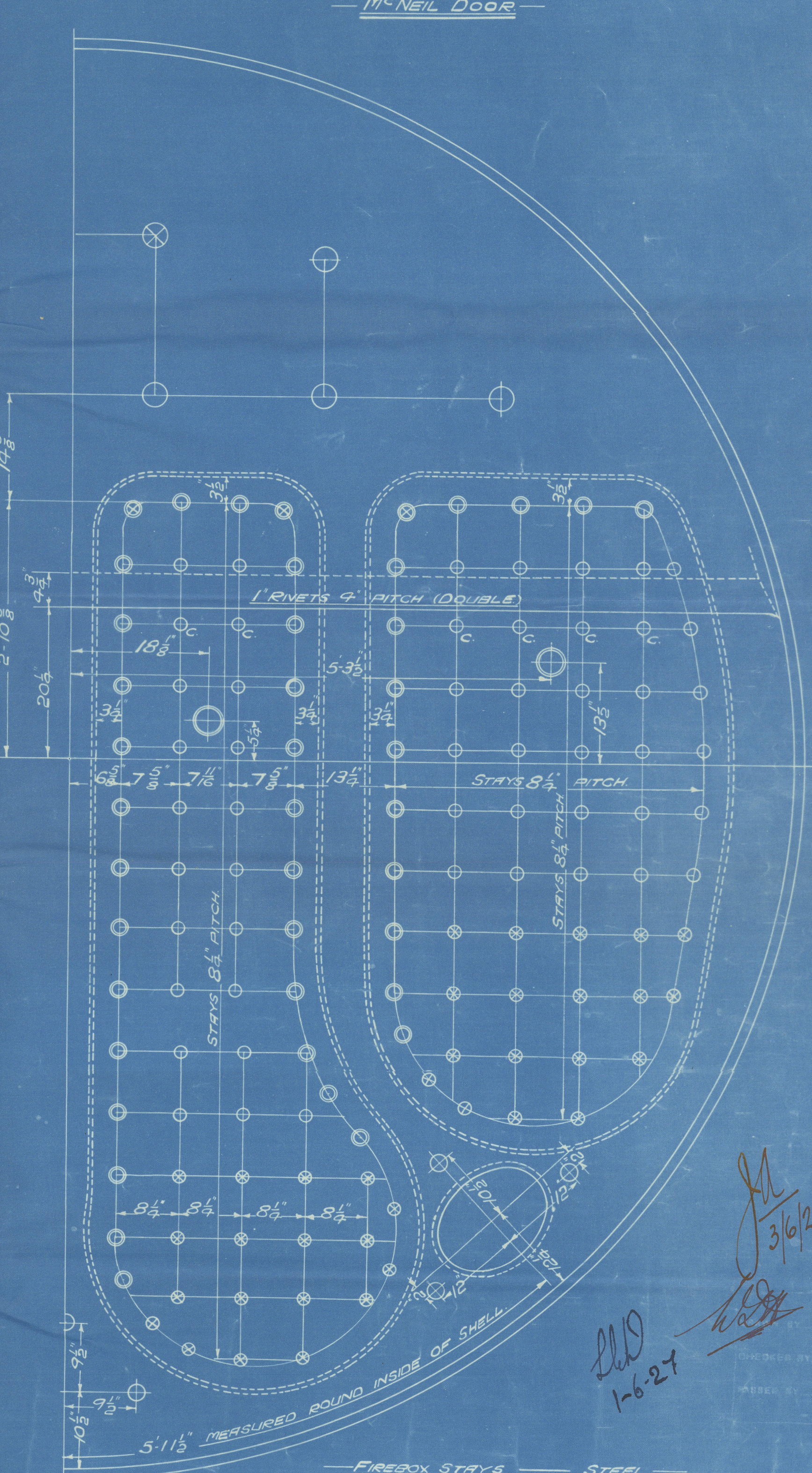
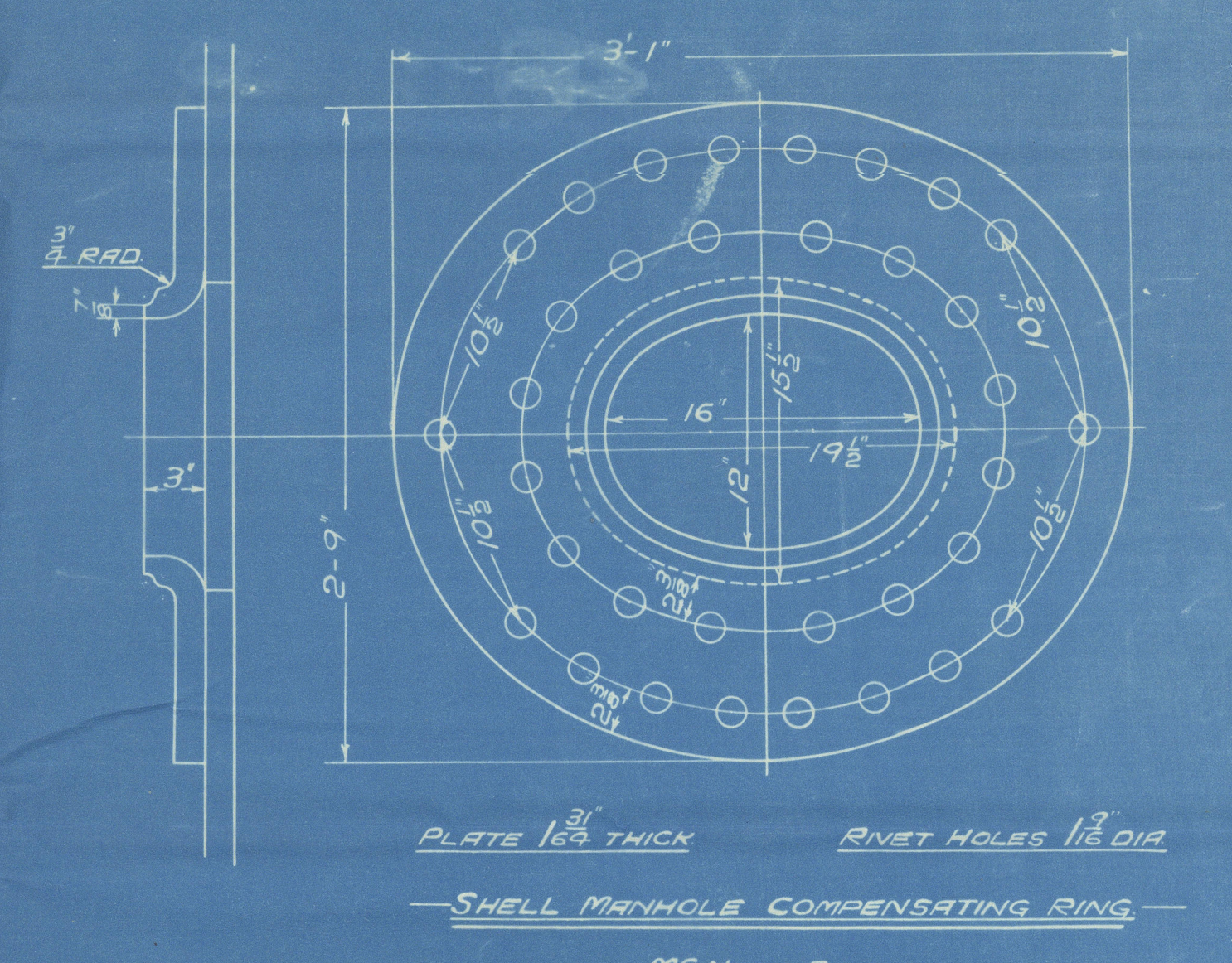
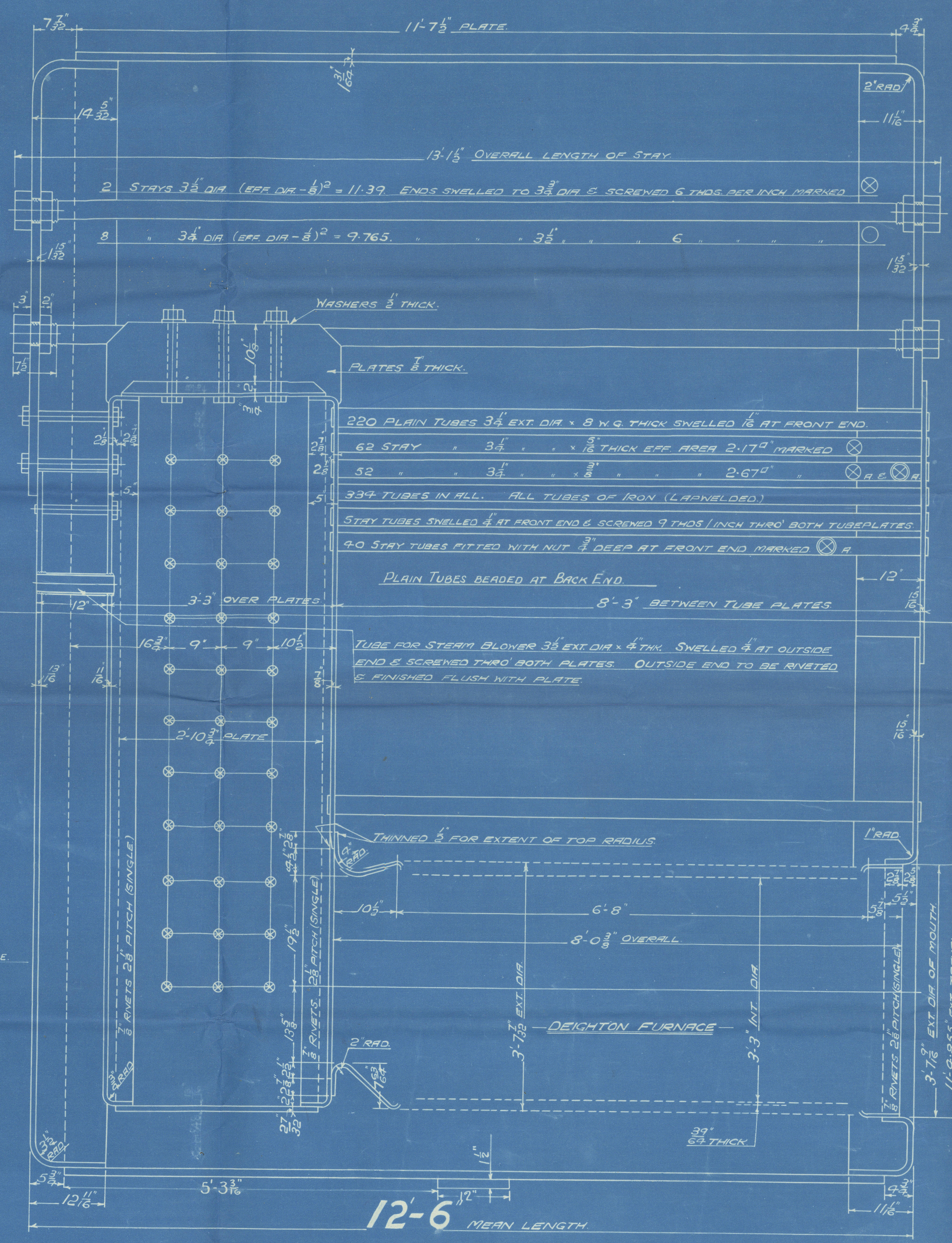
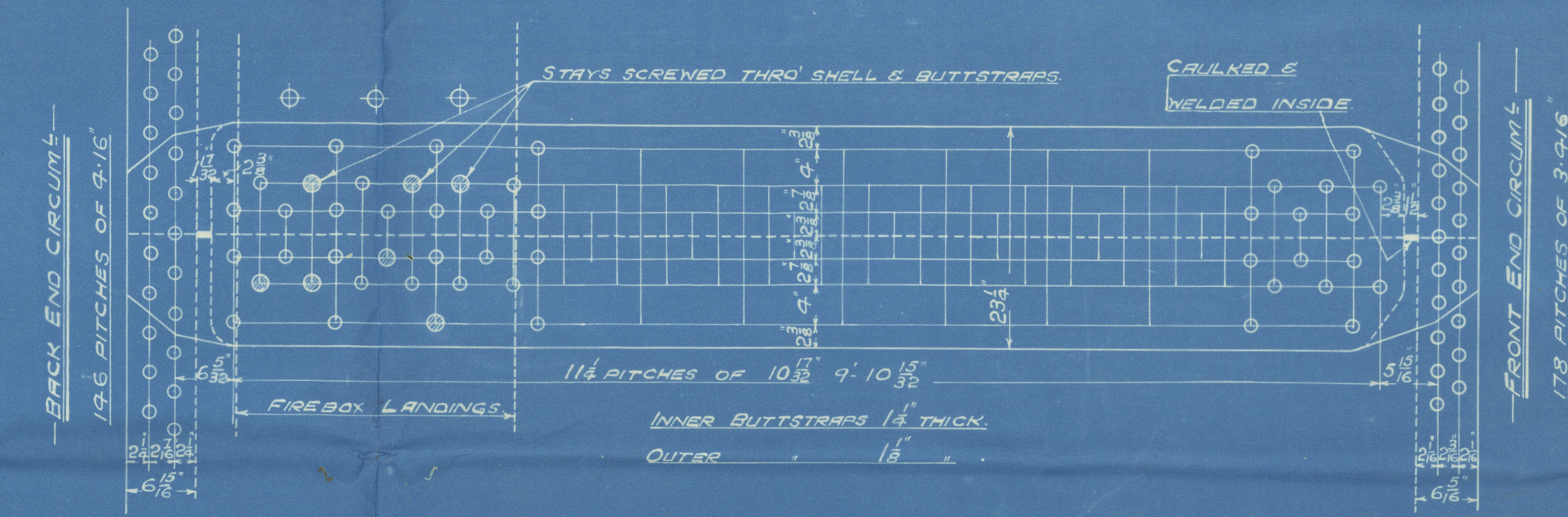
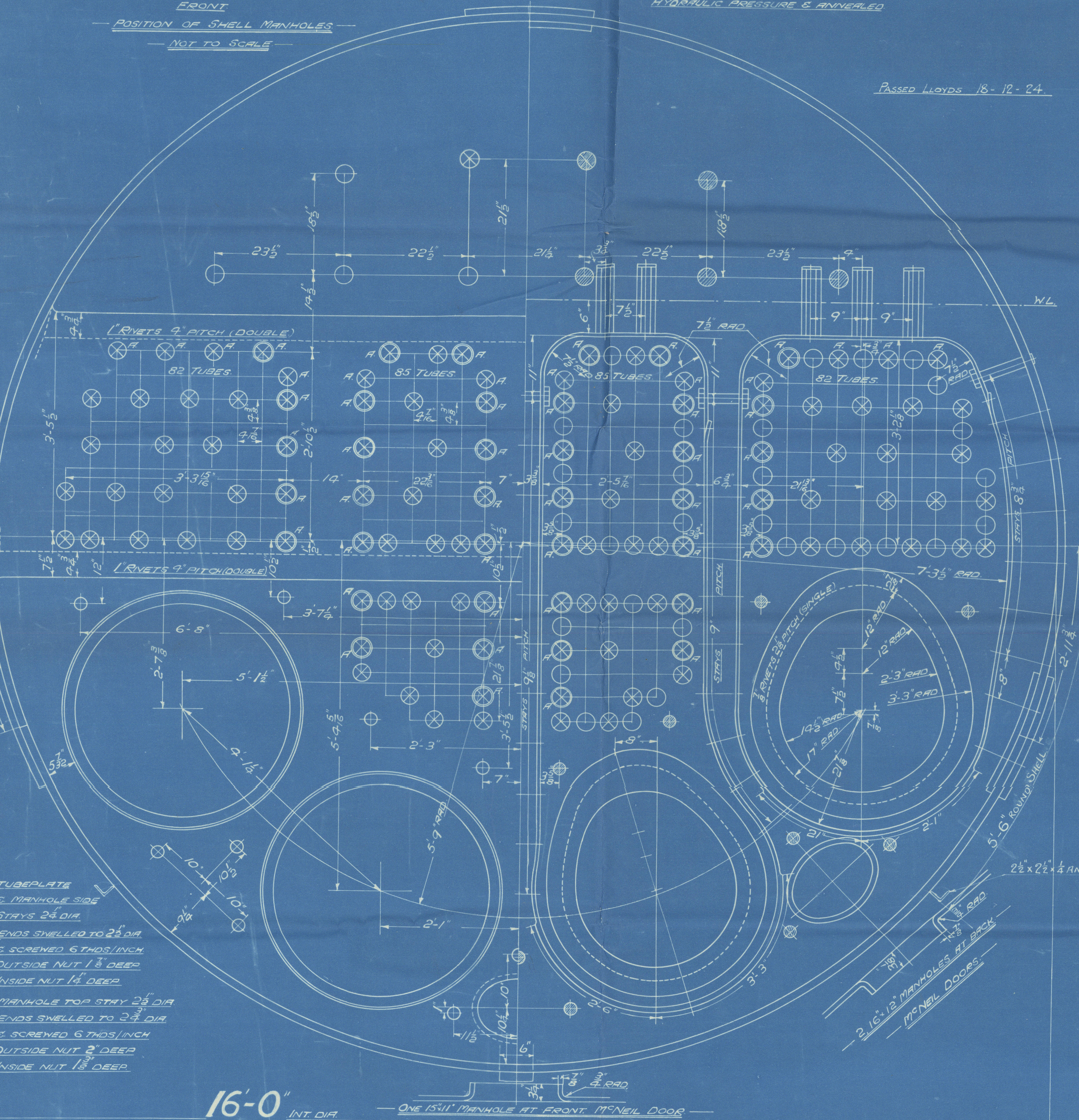
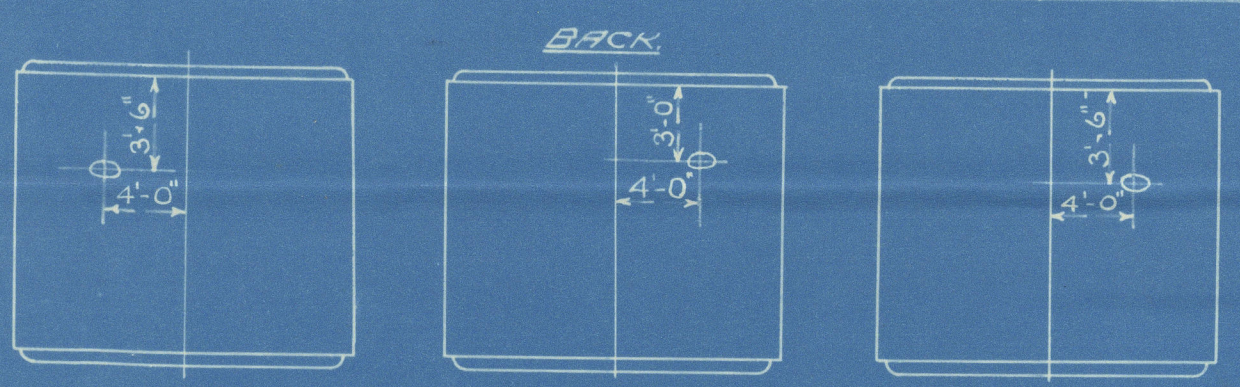


SURFACES		
TUBES	2320 #	7020 #
FIREBOX TOP & SIDES	222 "	666 "
" BACK	90 "	270 "
TUBEPLATE	59 "	177 "
FURNACES	179 "	597 "
TOTAL HEATING SURFACE	2910 #	8730 #
GRATE AREA (5-6" GRATES)	71.5 "	219.5 "
TUBE AREA	144.3 "	432.9 "
WATER AREA	174 "	522 "
STEAM SPACE	531 #	1593 #
GRATE AREA : HEATING SURFACE	1 : 4.07	
" " : TUBE	1 : 32.7	
" " : WATER	4.95 : 1	
" " : STEAM SPACE	1 : 2.43	
% BOILER ABOVE FIREBOX	29.8	
WEIGHT OF WATER	32 TONS	96 TONS

RIVETING		
RIVET HOLE DIA	1 1/8"	1 1/4"
PITCH	10 3/8"	9 1/8"
% PLATE	85.1	63.9
% RIVET	87.8	97.9
% COMBINED	87.9	

LIMITS OF TENSILE STRENGTH & MATERIAL		
SHELL & BUTTSTRAP	30 TO 34 TONS	SIEMENS MARTIN STEEL
GIRDERS	28 TO 32 TONS	
OTHER PLATES	26 TO 30 TONS	
FURNACES	26 TO 30 TONS	
MAIN STAYS	28 TO 32 TONS	
SCREENED STAYS	26 TO 30 TONS	
RIVET BARS	26 TO 30 TONS	



FIREBOX WRAPPER PLATES:- SPENCER PLATES CANCELLED FOR CONT. 848 & PLATES MADE UNIFORM THICKNESS OF 1/2" TO FACILITATE DELIVERY (APPROVED BY LLOYDS 24-9-126)
CANCELLED 27-12-26

MAIN BOILER
- 3 OFF EACH CONT.
CONT. N° 822 848-879
WORKING PRESSURE 220 LBS. PER SQ. INCH.
TEST 380
- TO PASS LLOYDS SURVEY
SCALE - ONE INCH = ONE FOOT

ALL FIREBOX STAYS SCREENED THRO' BOTH PLATES & NUT FITTED AT EACH END EXCEPT STAYS FROM WING FIREBOX TO SHELL & STAYS MARKED 'C' IN BACK BOTTOM END WHICH PROJECT 8" & ARE CHAINED ALL 1/8" & 1/4" NUTS 8" DEEP EXCEPT ON GIRDER TOPS WHERE THE OUTSIDE NUTS ARE 1 1/2" DEEP.
ALL 1/8" NUTS 1" DEEP & 2 1/4" NUTS 1 1/2" DEEP

REGISTERED
TRADE MARK
10151-0020 foundation

GLASGOW

D. ROWAN & CO. LD.

(3) BOILERS ^{MAIN} NO 879

WP-220LBS

DUPLICATE OF NO 848

CHAS CONNELL & CO.

S/S NO 411

NO 17824

LYON'S TEST

380LBS

WP-280LBS

A.C. 14-3-28

Ben Mohr
GLASGOW REPORT No 17940

W151-0020



© 2019

Lloyd's Register
Foundation