

24-3PE mds 30

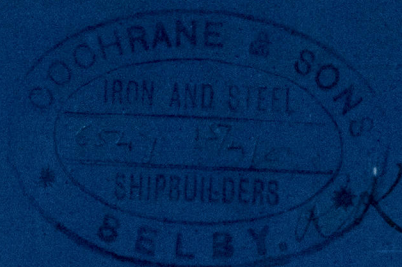
12.11.06  
16.11.06

# MIDSHIP SECTION

NOS 393-4-5

DIM<sup>NS</sup> 128'0" x 22'0" x 13'10" DEPTH MOULDED

SCALE 1/2" = 1 FOOT



TO BE CLASSED 100 A1. BY LLOYDS FOR FISHING PURPOSES  
ENGINE & BOILER CASING AS PREVIOUSLY APPROVED  
DECK PLATED IN WAY OF ENGINE & BOILER SPACE

## NUMERALS AS PER RULES

1/2 GIRTH	20.95.
1/2 BREADTH	10.95.
DEPTH	14.29.
	46.19.15.10
	126.87 LENGTH AS PER RULE
	58601153.2.10

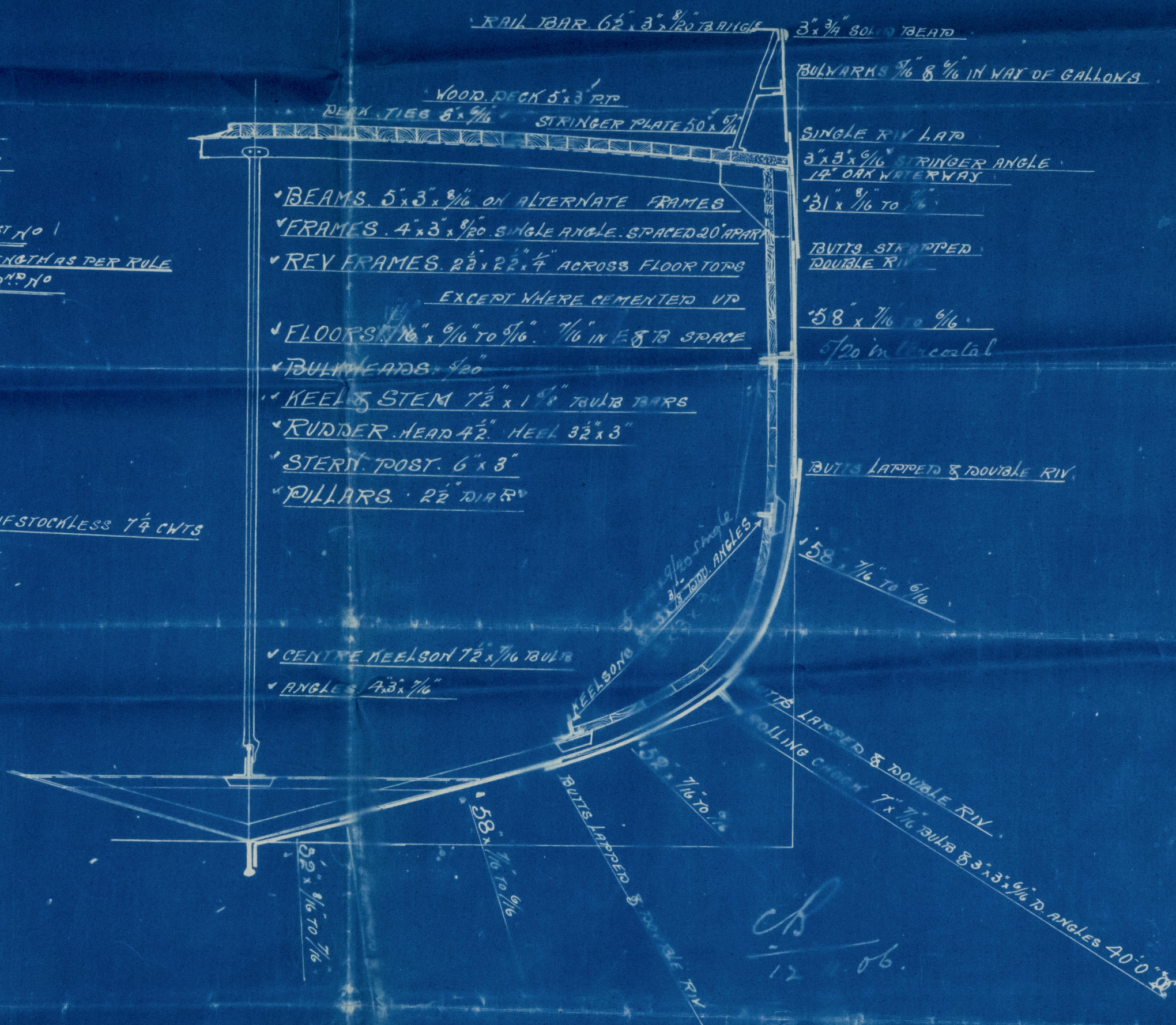
## PROPORTIONS

DIAL	8.8.
BOL	5.7.

## EQUIPMENT

1 <sup>ST</sup> BOWER	5 3/4 CMTS EX STOCK. IF STOCKLESS 7 1/4 CMTS
2 <sup>ND</sup> BOWER	5 1/4 CMTS EX STOCK
3 <sup>RD</sup> BOWER	3 CMTS EX STOCK
105 FATHOMS	1 1/2 CABLE
60 "	6 HAWSER
60 "	5 WARP

GOCHRANE & SONS  
SHIPBUILDERS  
BELBY  
LONDON



ms 393-4-5-2  
2PE-4PE-3PE  
ms 393-4-5-2



W1502-0512

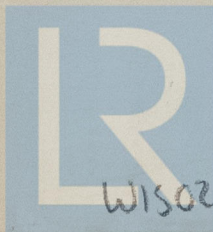


Midship Section  
Cochrane & Sons

— No. 395 —

s/s "Leander"

Hull Report No. 19026



© 2021

Lloyd's Register  
Foundation

W1502-0072